

ΣΥΣΤΗΜΑΤΑ ΓΡΑΜΜΙΚΗΣ ΚΙΝΗΣΗΣ
LINEAR MOTION SYSTEMS

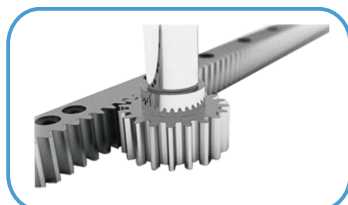
LINEAR BLOCKS AND GUIDEWAYS



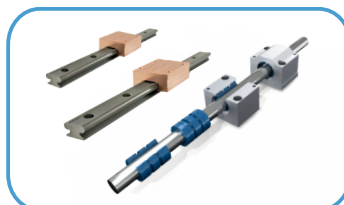
BALLSCREW AND BALLSCREW NUTS



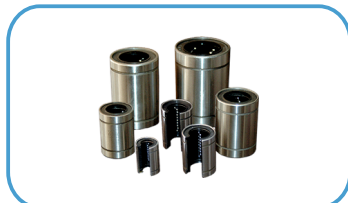
RACK AND PINIONS



TEFLON LINEAR BEARINGS



LINEAR BEARINGS



COUPLINGS



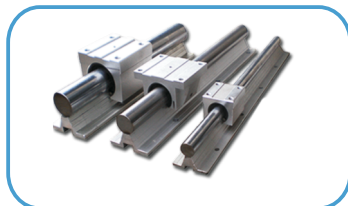
SHAFT END SUPPORT UNITS



LFR-RV BEARINGS



SHAFT SUPPORT UNITS



LINEAR GUIDES



e-mail: sales@aluminium-profile.gr
www.aluminium-profile.gr

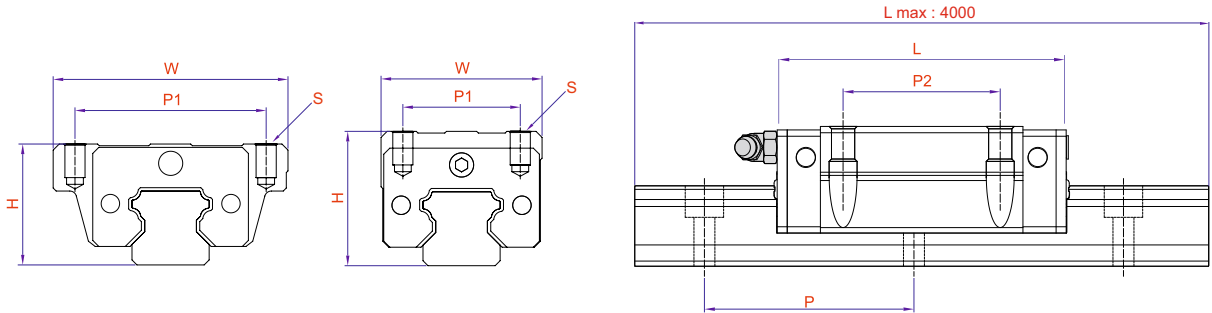
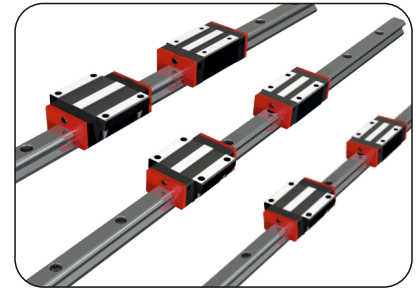
ΚΑΤΑΛΟΓΟΣ
PRICE LIST
2018

DMS®

LINEAR GUIDEWAYS AND BLOCKS

GHH / NARROW HIGH TYPE

GHW / WIDE TYPE



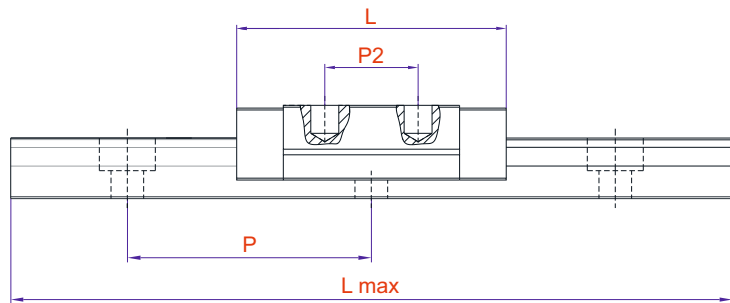
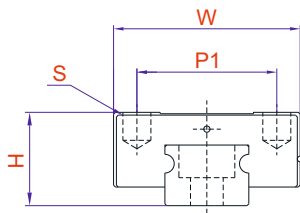
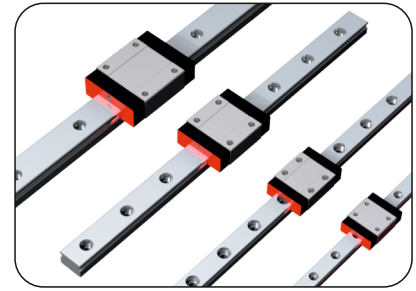
Mechanical Parts

PRODUCT NAME	Type	H	P1	P2	P	L	S	W	Static Kg	Dynamic Kg	LINEAR BLOCK		LINEAR GUIDEWAY	
											ΚΩΔΙΚΟΣ	ΤΙΜΗ	ΚΩΔΙΚΟΣ	ΤΙΜΗ/m
NARROW LINEAR BLOCK	GHH 15	28	26	26	60	61,4	M4	34	1697	1138	D 100	30,00 €	D 110	
WIDE LINEAR BLOCK	GHW 15	24	38	30	60	61,4	M5	47	1697	1138	D 101	32,00 €		
NARROW LINEAR BLOCK	GHH 20	30	32	36	60	77,5	M5	44	2776	1775	D 102	34,00 €	D 111	
WIDE LINEAR BLOCK	GHW 20	30	53	40	60	77,5	M6	63	2776	1775	D 103	39,00 €		
NARROW LINEAR BLOCK	GHH 25	40	35	35	60	84	M6	48	3649	2648	D 104	49,00 €	D 112	
WIDE LINEAR BLOCK	GHW 25	36	57	45	60	84	M8	70	3649	2648	D 105	50,00 €		
NARROW LINEAR BLOCK	GHH 30	45	40	40	80	97,4	M8	60	5219	3874	D 106	63,00 €	D 113	
WIDE LINEAR BLOCK	GHW 30	42	72	52	80	97,4	M10	90	5219	3874	D 107	65,00 €		
NARROW LINEAR BLOCK	GHH 35	55	50	50	80	112,4	M8	70	6916	4952	D 108	85,00 €	D 114	
WIDE LINEAR BLOCK	GHW 35	48	82	62	80	112,4	M10	100	6916	4952	D 109	89,00 €		

* The length of linear guideways is 4000 mm.

DMS®

MINIATURE LINEAR GUIDEWAY
MINIATURE LINEAR BLOCK



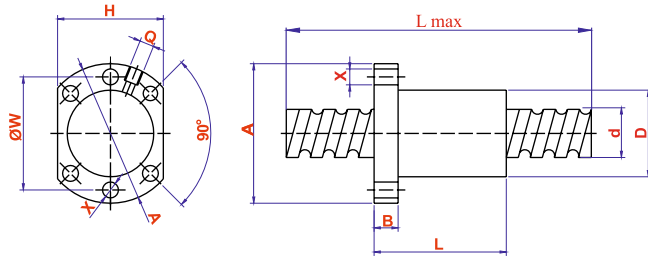
Mechanical Parts

PRODUCT NAME	Type	H	P1	P2	P	L	S	W	Static Kg	Dynamic Kg	LINEAR BLOCK		LINEAR GUIDEWAY	
											ΚΩΔΙΚΟΣ	ΤΙΜΗ	ΚΩΔΙΚΟΣ	ΤΙΜΗ/m
MINIATURE LINEAR BLOCK	DMN-07	8	12	8	15	22.5	M2x2.5	17	10	8	D 115		D 119	
MINIATURE LINEAR BLOCK	DMN-09	10	15	10	20	28.9	M3x3	20	20	15	D 116		D 120	
MINIATURE LINEAR BLOCK	DMN-12	13	20	15	25	34.7	M3x3.5	27	32	27	D 117		D 121	
MINIATURE LINEAR BLOCK	DMN-15	16	25	20	40	42.1	M3x4	32	45	37	D 118		D 122	

* Length max
 DMN 07-700 mm
 DMN 09-1000 mm
 DMN 12-1600 mm
 DMN 15-1600 mm

FSU FLANGED NUT

DKM

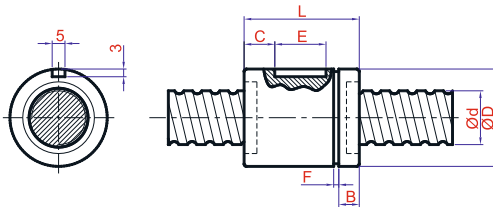


Type	A	X	H	W	B	L	d	D	Q	Load Capacity	
										Ca (Kgf)	Coa (Kgf)
(DKM-1605 FSU) Ballscrew and Nut	48	5,5	40	38	10	43	16	28	M4	780	1790
(DKM-2005 FSU) Ballscrew and Nut	58	6,6	44	47	10	43	20	36	M4	1100	2280
(DKM-2505 FSU) Ballscrew and Nut	63	6,6	48	51	10	43	25	40	M4	1250	3070
(DKM-2510 FSU) Ballscrew and Nut	63	6,6	48	51	10	54	25	40	M4	1944	3877
(DKM-3205 FSU) Ballscrew and Nut	81	9	62	65	12	52	32	50	M4	1400	4080
(DKM-3210 FSU) Ballscrew and Nut	81	9	62	65	14	90	32	50	M4	3390	7170
(DKM-4010 FSU) Ballscrew and Nut	93	9	70	78	14	90	40	63	M4	3850	9470

FLANGED NUT		RIGHT-HAND THREAD BALLSCREW	
ΚΩΔΙΚΟΣ	TIMH	ΚΩΔΙΚΟΣ	TIMH/m
FSU 1605		DKM 1605	
FSU 2005		DKM 2005	
FSU 2505		DKM 2505	
FSU 2510		DKM 2510	
FSU 3205		DKM 3205	
FSU 3210		DKM 3210	
FSU 4010		DKM 4010	

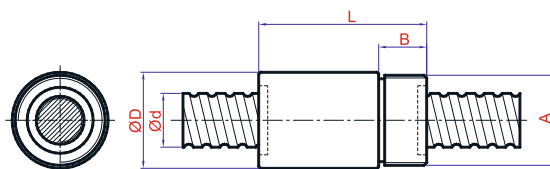
* The length of L Max is 4000 mm.

SCI ROUND NUT WITH WEDGE



ΚΩΔΙΚΟΣ	Type	d	D	L	B	F	C	E	Ca (Kgf)	Coa (Kgf)	TIMH
SCI 16	16-05 Round Nut With Key	16	28	45,3	5,5	2	13	20	780	1.790	
SCI 20	20-05 Round Nut With Key	20	36	45,2	5,5	2	12,5	20	1.130	2.480	
SCI 25	25-05 Round Nut With Key	25	38	45,2	8	2	12,5	20	1.280	3.110	

SCM ROUND THREADED NUT

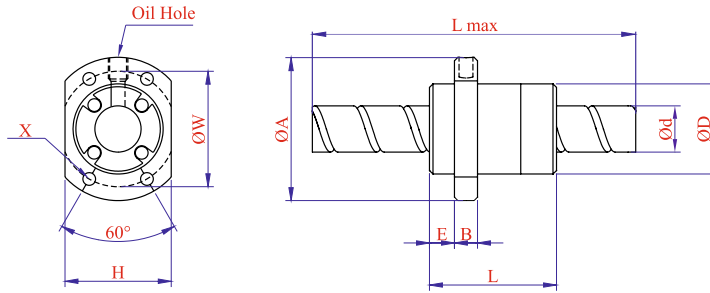


ΚΩΔΙΚΟΣ	Type	d	D	L	B	A	Ca (Kgf)	Coa (Kgf)	TIMH
SCM 16	16-05 Round Nut (Threaded)	16	32	56	16	M30x1,5P	765	1.240	
SCM 20	20-05 Round Nut (Threaded)	20	38	60	16,5	M35x1,5P	860	1.710	
SCM 25	25-05 Round Nut (Threaded)	25	42	60	17	M40x1,5P	980	2.300	

Mechanical Parts

DKM

**DKM-SFE
LONG PITCH
BALLSCREW
FLANGED NUT**



PRODUCT NAME	Type	Dimensions										Load Capacity	
		d	D	A	E	B	L	X	W	H	Ca	Coa	
Long Pitch Ballscrew and Nut	1616-3 SFE	16	32	53	10.5	10	45	4.5	42	34	650	1280	
Long Pitch Ballscrew and Nut	2020-3 SFE	20	39	62	12	10	55	5.5	50	41	980	2140	
Long Pitch Ballscrew and Nut	2525-3 SFE	25	47	74	13	12	57	6.6	60	49	1470	3350	
Long Pitch Ballscrew and Nut	3232-3 SFE	32	58	92	14	15	82	9	74	68	2140	5260	
Long Pitch Ballscrew and Nut	4040-3 SFE	40	73	114	19	15	100	11	93	75	3410	8820	

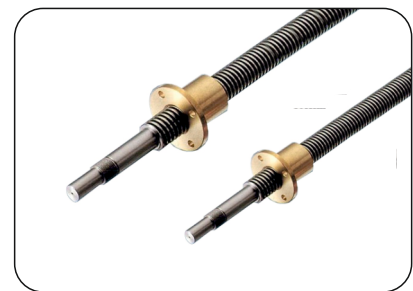
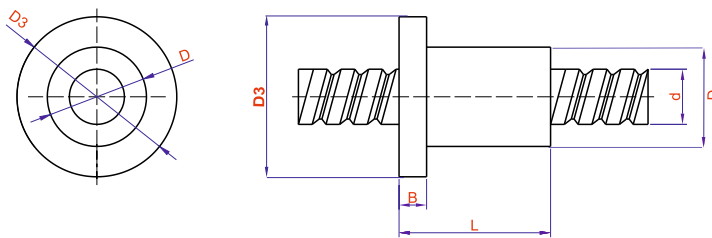
LONG PITCH FLANGED NUT	
ΚΩΔΙΚΟΣ	ΤΙΜΗ
SPE 16	
SPE 20	
SPE 25	
SPE 32	
SPE 40	

LONG PITCH BALLSCREW	
ΚΩΔΙΚΟΣ	ΤΙΜΗ/m
LPB 16	
LPB 20	
LPB 25	
LPB 32	
LPB 40	

Mechanical Parts

* The length of L Max is 6000 mm.

TRAPEZOIDAL BALLSCREW AND FLANGED NUT



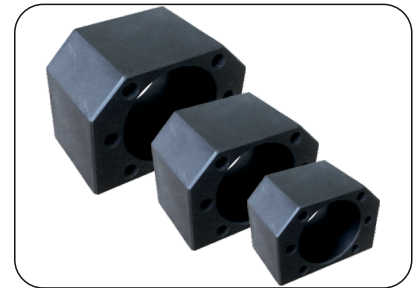
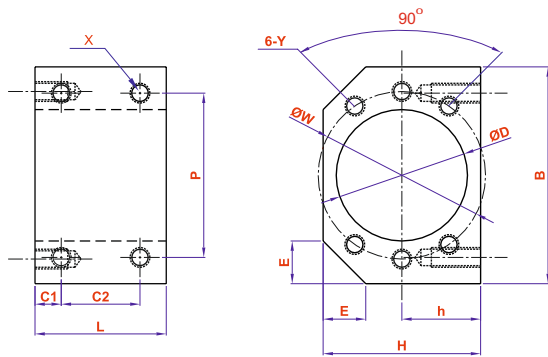
PRODUCT NAME	Type	D3	B	L	d	D
TRAPEZOIDAL Ballscrew	TR16-04	48	10	43	16	28
TRAPEZOIDAL Ballscrew	TR20-04	58	10	43	20	36
TRAPEZOIDAL Ballscrew	TR25-05	63	10	43	25	40
TRAPEZOIDAL Ballscrew	TR40-06	90	14	70	40	60

TRAPEZOIDAL NUT	
ΚΩΔΙΚΟΣ	ΤΙΜΗ
TRN 16	
TRN 20	
TRN 25	
TRN 40	

TRAPEZOIDAL BALLSCREW	
ΚΩΔΙΚΟΣ	ΤΙΜΗ/m
TR 16-04	
TR 20-04	
TR 25-05	
TR 40-06	

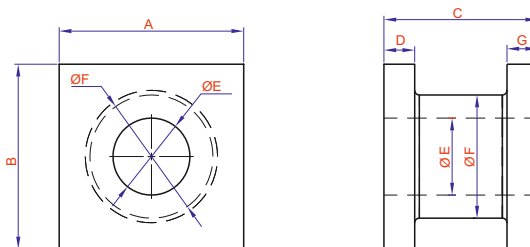
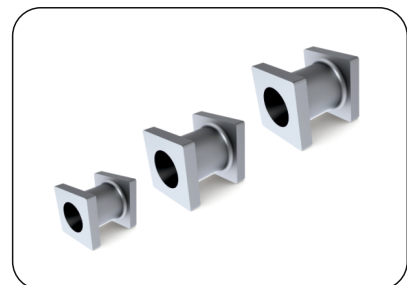
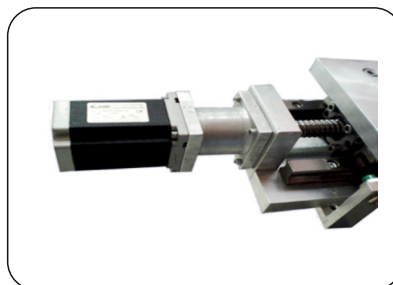
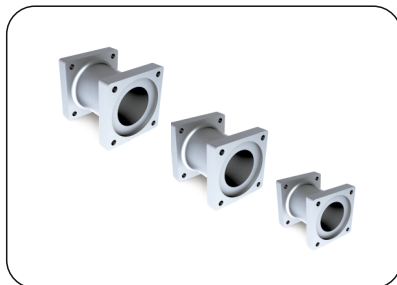
* Right-hand threaded TRAPEZOIDAL flanged ballscrews.
Right-hand thread trapez flanged nuts.

FLANGED NUT HOUSING



ΚΩΔΙΚΟΣ	NUT	Dimensions (mm)											TIMH
		ØD	B	H	h	E	L	C1	C2	P	X	W	
H 160	1605-1610	28	52	40	20	12	40	8	24	40	M5	38	M5
H 200	2005-2010	36	62	44	22	12	40	8	24	48	M6	47	M6
H 250	2505-2510	40	66	48	24	13	40	8	24	50	M6	51	M6
H 320	3205-3210	50	86	62	31	17	40	8	24	66	M8	65	M8
H 400	4005-4010	63	100	70	35	19	38	8	24	80	M8	78	M8
H 161	1616	32	54	38	19	8	40	8	24	44	M5	42	M4
H 202	2020	39	64	46	23	11	40	8	24	52	M6	50	M5
H 252	2525	47	68	56	28	9	40	8	24	50	M6	60	M6

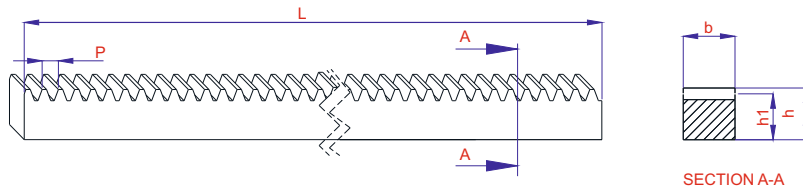
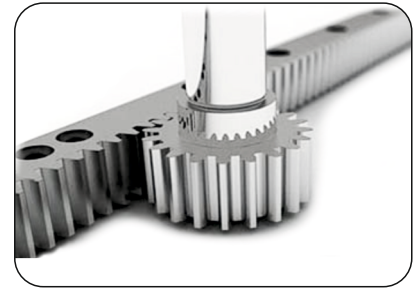
MOTOR CONNECTION FLANGES (With Hole & Without Hole)



ΚΩΔΙΚΟΣ	Dimensions							Unfinished Flange	FLANGE mounting
	A	B	C	D	G	E	F	TIMH	TIMH
MC 45	45	45	67	10	10	35	45		
MC 60	60	60	73	12	12	35	55		
MC 80	80	80	88	10	10	47	55		
MC 85	85	85	90	15	15	47	60		
MC 95	95	95	104	24	17	47	72		
MC 120	120	120	100	20	20	50	80		

* The price of flange mounting does not include price of couplings.

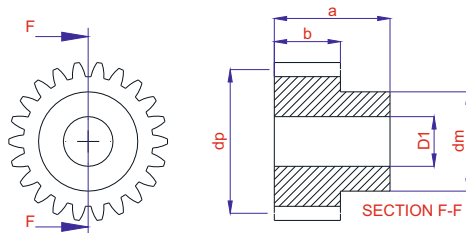
Spur RACK AND PINION



Dimensions of Rack and Pinion Gears							TIMH/m KOMMATI (1000 mm)	TIMH/m ΒΕΡΓΑΣ
ΚΩΔΙΚΟΣ	Type	L	p	b	h	h ₁		
R 100	1	2000	3,14	15	15	14		
R 150	1,5	2000	4,71	17	17	15,5		
R 200	2	2000	6,28	20	20	18		
R 250	2,5	2000	7,85	25	25	22,5		
R 300	3	2000	9,42	30	30	27		
R 400	4	2000	12,56	40	40	36		

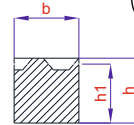
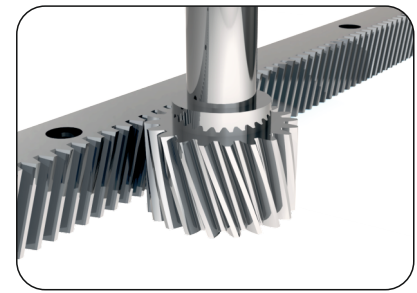
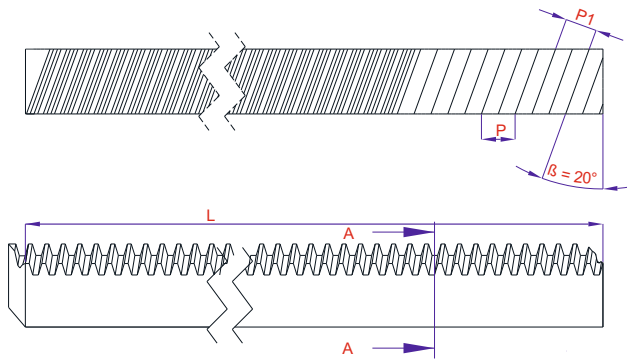
Mechanical Parts

PINION GEARS



Dimensions of Pinion Gears								TIMH
ΚΩΔΙΚΟΣ	Type	Number of gears (t)	a	b	dp	dm	D1	
P 2025	1	20	25	15	20	16	8	
P 2225	1	22	25	15	22	16	8	
P 2425	1	24	25	15	24	20	8	
P 2525	1	25	25	15	25	20	8	
P 2030	1,5	20	30	17	30	24	8	
P 2230	1,5	22	30	17	33	25	10	
P 2430	1,5	24	30	17	36	30	10	
P 2530	1,5	25	30	17	37,5	25	10	
P 2035	2	20	35	20	40	32	10	
P 2235	2	22	35	20	44	30	12	
P 2435	2	24	35	20	48	40	12	
P 2535	2	25	35	20	50	35	12	

HELICAL RACK (RIGHT)

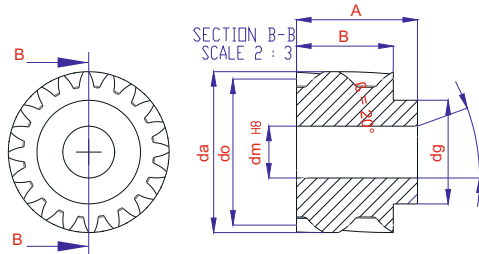


SECTION A-A

Dimensions of Helical Rack and Pinion (RIGHT)							
ΚΩΔΙΚΟΣ	Type	L	p	p1	b	h	h1
H 100	1	2000	3.343	3.142	15	15	14
H 150	1,5	2000	5.015	4.712	17	17	15,5
H 200	2	2000	6.686	6.283	20	20	18
H 250	2,5	2000	8.358	7.854	25	25	22,5
H 300	3	2000	10.029	9.425	30	30	27
H 400	4	2000	13.372	12.566	40	40	36

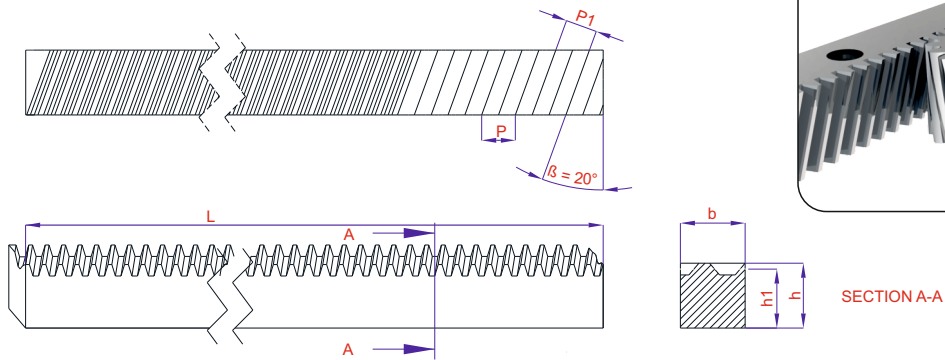
TIMH/m ΚΟΜΜΑΤΙ (1000 mm)	TIMH/m ΒΕΡΓΑΣ

HELICAL PINION GEARS (LEFT)



Dimensions of Helical Pinion Gears (LEFT)									
ΚΩΔΙΚΟΣ	Type	Number of gears (t)	A	B	da	do	dm	dg	TIMH
HP 2225	1	22	25	15	25.4	23.41	8	20	
HP 2425	1	24	25	15	27.5	25.5	8	22	
HP 2525	1	25	25	15	28.6	26.60	8	23	
HP 2230	1,5	22	30	17	38.1	35.12	10	29	
HP 2430	1,5	24	30	17	41.3	38.31	10	33	
HP 2530	1,5	25	30	17	42.9	39.91	10	34	
HP 2235	2	22	35	20	50.8	46.82	12	39	
HP 2435	2	24	35	20	55.1	51.08	12	43	
HP 2535	2	25	35	20	57.2	53.21	12	46	
HP 2240	2,5	22	40	25	63.5	58.53	14	49	
HP 2440	2,5	24	40	25	68.9	63.85	14	55	
HP 2540	2,5	25	40	25	71.5	66.51	14	57	
HP 2250	3	22	50	30	76.2	70.24	12	60	
HP 2450	3	24	50	30	82.6	76.62	12	66	
HP 2550	3	25	50	30	85.8	79.81	12	69	
HP 2260	4	22	60	40	101.6	93.65	14	80	
HP 2460	4	24	60	40	110.2	102.16	16	89	
HP 2560	4	25	60	40	114.4	106.42	16	93	

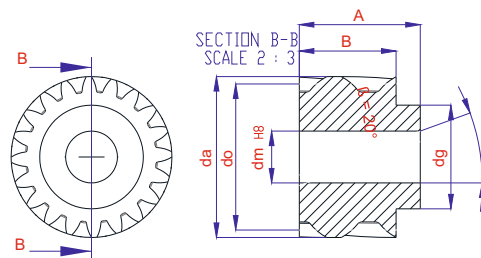
HELICAL RACK (LEFT)



Dimensions of Helical Rack (LEFT)								TIMH/m ΚΟΜΜΑΤΙ (1000 mm)	TIMH/m ΒΕΡΓΑΣ
ΚΩΔΙΚΟΣ	Type	L	p	p1	b	h	h1		
HR 100	1	2000	3.343	3.142	15	15	14		
HR 150	1,5	2000	5.015	4.712	17	17	15,5		
HR 200	2	2000	6.686	6.283	20	20	18		
HR 250	2,5	2000	8.358	7.854	25	25	22,5		
HR 300	3	2000	10.029	9.425	30	30	27		
HR 400	4	2000	13.372	12.566	40	40	36		

Mechanical Parts

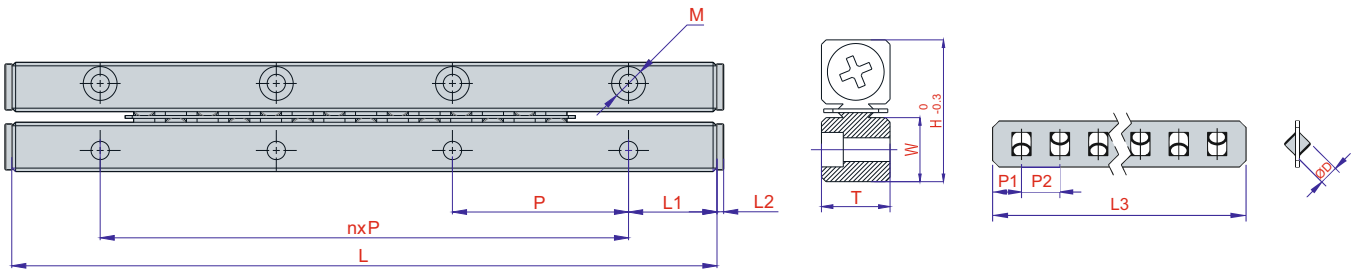
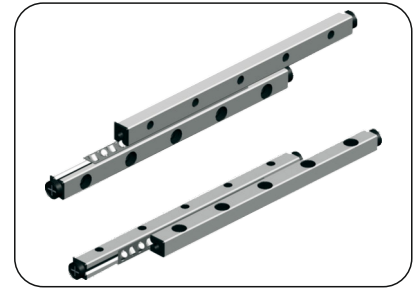
HELICAL PINION GEARS (RIGHT)



Z 25 Dimensions of Pinion Gears			TIMH
ΚΩΔΙΚΟΣ	Type	Number of teeth (z)	
HP 2510	1	25	
HP 2515	1,5	25	
HP 2520	2	25	
HP 2525	2,5	25	
HP 2530	3	25	
HP 2540	4	25	

Z 22 Dimensions of Pinion Gears			TIMH
ΚΩΔΙΚΟΣ	Type	Number of teeth (z)	
HP 2210	1	22	
HP 2215	1,5	22	
HP 2220	2	22	
HP 2225	2,5	22	
HP 2230	3	22	
HP 2240	4	22	

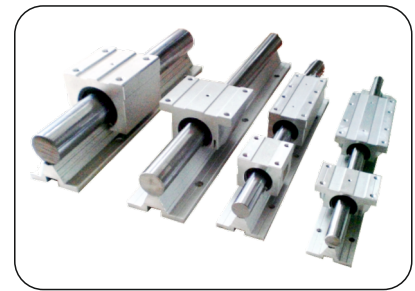
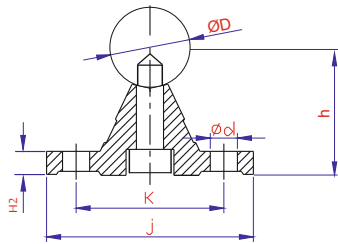
Z 24 Dimensions of Pinion Gears			TIMH
ΚΩΔΙΚΟΣ	Type	Number of teeth (z)	
HP 2420	2	24	



Mechanical Parts

PRODUCT NAME	Type	Max Stroke (mm)	Dimensions (mm)																	Load Capacity (kgf)		LINEAR SLIDES	
			H	T	W	L	nxP	L1	L2	ØD	L3	R	P1	P2	A	M	d1	d2	B	Dynamic	Static	ΚΩΔΙΚΟΣ	TIMH
075 MM Ø3 LINEAR SLIDE (DUP)	DRV03-075	54	18	8	8,3	75	2*25	12,5	2	Ø3	51,4	10	3,2	5	3,5	M4	3,3	6	3,1	638 N	761 N	LS3-075	
100 MM Ø3 LINEAR SLIDE (DUP)	DRV03-100	74				100	3*25				66,4	13										91,4	18
150 MM Ø3 LINEAR SLIDE (DUP)	DRV03-150	124				150	5*25				91,4	18											
100 MM Ø6 LINEAR SLIDE (DUP)	DRV06-100	80	31	15	14	100	1*50	25	2	Ø6	64,8	7	5,4	9	6	M6	5,3	9,5	5,2	2570 N	2632 N	LS6-100	
150 MM Ø6 LINEAR SLIDE (DUP)	DRV06-150	108				150	2*50				100,8	11										127,8	14
200 MM Ø6 LINEAR SLIDE (DUP)	DRV06-200	154				200	3*50				127,8	14											
250 MM Ø6 LINEAR SLIDE (DUP)	DRV06-250	200	44	22	20,2	250	4*50	50	3,5	Ø9	154,8	17	9	14	9	M8	6,8	10,5	6,2	7190 N	7274 N	LS6-250	
300 MM Ø6 LINEAR SLIDE (DUP)	DRV06-300	246				300	5*50				181,8	20										244,8	27
400 MM Ø6 LINEAR SLIDE (DUP)	DRV06-400	320				400	7*50				244,8	27											
500 MM Ø6 LINEAR SLIDE (DUP)	DRV06-500	412	44	22	20,2	500	9*50	50	3,5	Ø9	298,8	33	9	14	9	M8	6,8	10,5	6,2	7190 N	7274 N	LS6-500	
200 MM Ø9 LINEAR SLIDE (DUP)	DRV09-200	158				200	1*100				130	9										186	13
300 MM Ø9 LINEAR SLIDE (DUP)	DRV09-300	246				300	2*100				186	13										256	18
400 MM Ø9 LINEAR SLIDE (DUP)	DRV09-400	306	44	22	20,2	400	3*100	50	3,5	Ø9	256	18	9	14	9	M8	6,8	10,5	6,2	7190 N	7274 N	LS9-400	
500 MM Ø9 LINEAR SLIDE (DUP)	DRV09-500	394				500	4*100				312	22										312	22

LINEAR SHAFT + SHAFT SUPPORT PROFILE (SET)

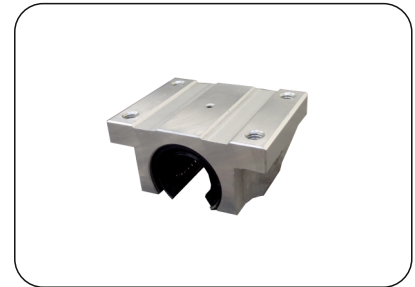
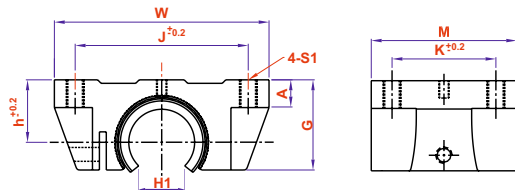


Dimensions (mm)								
ΚΩΔΙΚΟΣ	Type	H2	ØD	Ød	h	J	K	Lmax
170-12	SAC 12-1000	5	Ø12	Ø5	-	40	29	6000
170-16	SAC 16-1000	5	Ø16	Ø5.5	26	45	33	6000
170-20	SAC 20-1000	5,8	Ø20	Ø6.6	32	52	37	6000
170-25	SAC 25-1000	6	Ø25	Ø6.6	36	57	42	6000
170-30	SAC 30-1000	7	Ø30	Ø9	42	69	51	6000
170-40	SAC 40-1000	8	Ø40	Ø9	50	73	55	6000

TIMH/m KOMMATI	TIMH/m 6 m ΒΕΡΓΑΣ

Mechanical Parts

(OPEN) CAGED BEARINGS

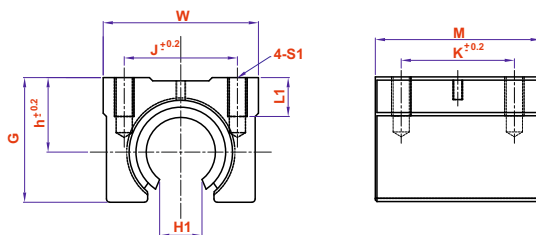


TBR

ΚΩΔΙΚΟΣ	Type	Dimensions (mm)									Load Capacity		Weight (g)
		W	G	A	M	S1	J	K	h	H1	Dynamic	Static	
TBR 16UU	TBR 16	62	26	8	42	M5	50	30	18	11	392	490	0.18
TBR 20UU	TBR 20	68	31	10	51	M6	54	34	21	12.5	784	1176	0.30
TBR 25UU	TBR 25	82	41	10	65	M8	65	50	28	13	1568	2352	0.60
TBR 30UU	TBR 30	91	48	12	75	M8	75	60	33.5	15.5	1764	2940	0.90

TIMH

(OPEN) CAGED BEARINGS

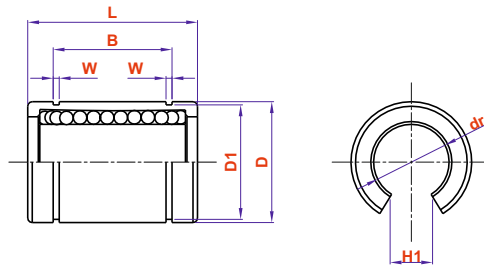


SBR

ΚΩΔΙΚΟΣ	Type	Dimensions (mm)									Load Capacity		Weight (g)
		W	G	L1	M	S1	J	K	h	H1	Dynamic	Static	
SBR 12UU	SBR 12	40	27,6	10	39	M5	28	26	17	7.5	510	784	100
SBR 16UU	SBR 16	45	33	10	45	M5	32	30	20	11	774	1180	150
SBR 20UU	SBR 20	48	39	12	50	M6	35	35	23	12.5	882	1370	200
SBR 25UU	SBR 25	60	47	13	65	M6	40	40	27	13	980	1570	450
SBR 30UU	SBR 30	70	56	16	70	M8	50	50	33	15.5	1570	2740	630
SBR 40UU	SBR 40	90	72	20	90	M10	65	65	42	21	2160	4020	1330

TIMH

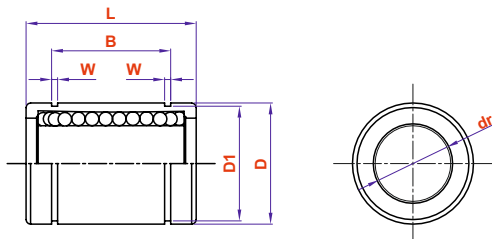
LME UUOP SERIE (OPEN)



Mechanical Parts

ΚΩΔΙΚΟΣ	Type	Dimensions (mm)							Load Capacity		TIMH
		d	D	L	B	W	D1	H1	Dynamic	Static	
LME 12 UUOP	LME 12 UUOP	12	22	32	22.9	1.3	21	7.5	510	784	
LME 16 UUOP	LME 16 UUOP	16	26	36	24.9	1.3	24.9	11	578	892	
LME 20 UUOP	LME 20 UUOP	20	32	45	31.5	1.6	30.3	12.5	862	1370	
LME 25 UUOP	LME 25 UUOP	25	40	58	44.1	1.85	37.5	13	980	1570	
LME 30 UUOP	LME 30 UUOP	30	47	68	52.1	1.85	44.5	15.5	1570	2740	
LME 40 UUOP	LME 40 UUOP	40	62	80	60.6	2.15	59	21	2160	4020	

LME UU SERIES (CLOSED)



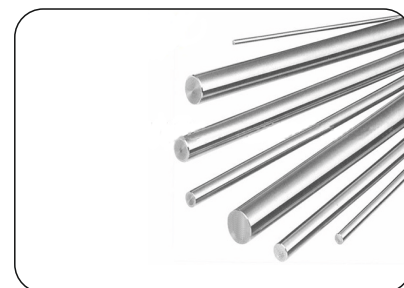
ΚΩΔΙΚΟΣ	Type	Dimensions (mm)							Load Capacity		TIMH
		d	D	L	B	W	D1	Dynamic	Static		
LME 8 UU	LME 8 UU	8	16	25	16.5	1.1	15.2	372	549		
LME 12 UU	LME 12 UU	12	22	32	22.9	1.3	21	510	784		
LME 16 UU	LME 16 UU	16	26	36	24.9	1.3	24.9	578	892		
LME 20 UU	LME 20 UU	20	32	45	31.5	1.3	30.3	862	1370		
LME 25 UU	LME 25 UU	25	40	58	44.1	1.85	37.5	980	1570		
LME 30 UU	LME 30 UU	30	47	68	52.1	1.85	44.5	1570	2740		
LME 40 UU	LME 40 UU	40	62	80	60.6	2.15	59	2160	4020		

PRECISION CHROMED HARDENED INDUCTION SHAFTS

ΚΩΔΙΚΟΣ	PRODUCT NAME	TIMH/m KOMMATI	TIMH/m 6m BEPTAZ
W4-WWL	Ø 4 HARDENED INDUCTION SHAFT (CHROMED)		
W6-WWL	Ø 6 HARDENED INDUCTION SHAFT (CHROMED)		
W8-WWL	Ø 8 HARDENED INDUCTION SHAFT (CHROMED)		
W10-WWL	Ø 10 HARDENED INDUCTION SHAFT (CHROMED)		
W12-WWL	Ø 12 HARDENED INDUCTION SHAFT (CHROMED)		
W16-WWL	Ø 16 HARDENED INDUCTION SHAFT (CHROMED)		
W20-WWL	Ø 20 HARDENED INDUCTION SHAFT (CHROMED)		
W25-WWL	Ø 25 HARDENED INDUCTION SHAFT (CHROMED)		
W30-WWL	Ø 30 HARDENED INDUCTION SHAFT (CHROMED)		
W40-WWL	Ø 40 HARDENED INDUCTION SHAFT (CHROMED)		



WWL



Chromed hardened induction shafts ARE produced against corrosion to resist.
Cf53 Induction hardened HRC 62 (+/-2) Surface Hardness 0.4 - 2.2 mm ISO h7

PRECISION CHROMED HARDENED INDUCTION SHAFT (WITH HOLES)

ΚΩΔΙΚΟΣ	PRODUCT NAME	TIMH/m KOMMATI	TIMH/m 6m BEPTAZ
W12-WWL-DEL	Ø 12 HARDENED INDUCTION SHAFTS WITH HOLES (CHROMED)		
W16-WWL-DEL	Ø 16 HARDENED INDUCTION SHAFTS WITH HOLES (CHROMED)		
W20-WWL-DEL	Ø 20 HARDENED INDUCTION SHAFTS WITH HOLES (CHROMED)		
W25-WWL-DEL	Ø 25 HARDENED INDUCTION SHAFTS WITH HOLES (CHROMED)		
W30-WWL-DEL	Ø 30 HARDENED INDUCTION SHAFTS WITH HOLES (CHROMED)		
W40-WWL-DEL	Ø 40 HARDENED INDUCTION SHAFTS WITH HOLES (CHROMED)		

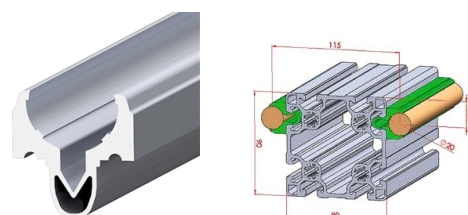
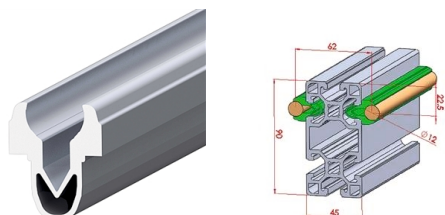
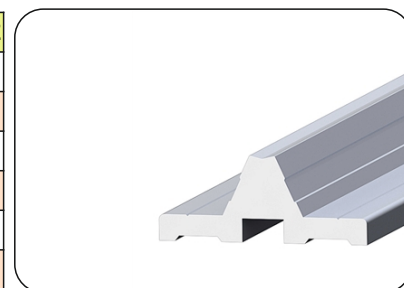
WWL-DEL



CF 53 DIA Induction hardened chromed HRC 62 (+/- 2) Surface Hardness 0,4-2,2 mm ISO h7

SHAFT SUPPORT PROFILE (WITH OUT HOLES)

ΚΩΔΙΚΟΣ	PRODUCT NAME	TIMH/m KOMMATI	TIMH/m 6m BEPTAZ
MDP 12	Ø 12 SHAFT SUPPORT PROFILE WITH HOLES		
MDP 16	Ø 16 SHAFT SUPPORT PROFILE WITH HOLES		
MDP 20	Ø 20 SHAFT SUPPORT PROFILE WITH HOLES		
MDP 25	Ø 25 SHAFT SUPPORT PROFILE WITH HOLES		
MDP 30	Ø 30 SHAFT SUPPORT PROFILE WITH HOLES		
MDP 40	Ø 40 SHAFT SUPPORT PROFILE WITH HOLES		

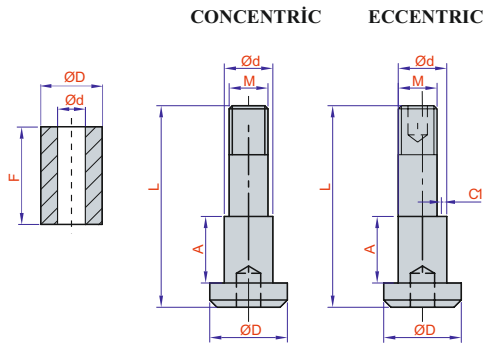


ΚΩΔΙΚΟΣ	PRODUCT NAME
M 008	Ø 12 CLUMPING PROFILE

ΚΩΔΙΚΟΣ	PRODUCT NAME
M 009	Ø 20 CLUMPING PROFILE

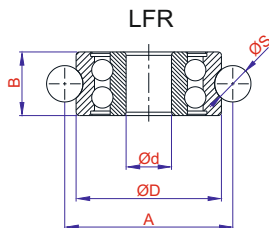
TIMH/m KOMMATI TIMH/m 6m BEPTAZ

TIMH/m KOMMATI TIMH/m 6m BEPTAZ



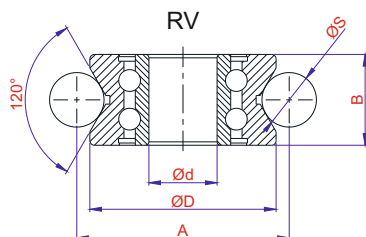
STUDS FOR BEARINGS

DIMENSIONS OF STUDS FOR BEARINGS										TIMH
CODE OF BEARING	STUDS TYPES	ΚΩΔΙΚΟΣ	M	Ød	A	L	C1	ØD	F	
LFR 50/5-4 KDD	CONCENTRIC	LFR 50/CON 0,5	M4	Ø5	7	20,5	0,5	8	0,5	
	ECCENTRIC	LFR 50/ECC 0,5								
LFR 50/8-6 KDD	CONCENTRIC	LFR 50/CON 2	M6	Ø8	10	30	1	14	2	
	ECCENTRIC	LFR 50/ECC 2								
	CONCENTRIC	LFR 50/CON 4	M6	Ø8	14	32	1	12	4	
	ECCENTRIC	LFR 50/ECC 4								
RV 200/8 KDD	CONCENTRIC	RV 200/CON 4,5	M8	Ø10	14	41,5	1	16	4,5	
	ECCENTRIC	RV 200/ECC 4,5								
LFR 5201-10 KDD	CONCENTRIC	LFR 5201/CON 8,5	M10	Ø12	24	49,4	1	18,5	8,5	
	ECCENTRIC	LFR 5201/ECC 8,5								
RV 201/12.35-16 KDD	CONCENTRIC	RV 201/CON 10,1	M10	Ø12	25,5	51	1	18,5	10,1	
	ECCENTRIC	RV 201/ECC 10,1								
	CONCENTRIC	RV 201/CON 22,6	M10	Ø12	38	63	1	17,5	22,6	
	ECCENTRIC	RV 201/ECC 22,6								
	CONCENTRIC	RV 201/CON 25	M10	Ø12	40,5	66	1	17,5	25	
	ECCENTRIC	RV 201/ECC 25								
RV 202 / 15.40.20 KDD	CONCENTRIC	RV 202/CON 14	M12	Ø15	33,5	60	1,5	19,5	14	
	ECCENTRIC	RV 202/ECC 14								
	CONCENTRIC	RV 202/CON 18	M12	Ø15	37,5	64	1,5	19,5	18	
	ECCENTRIC	RV 202/ECC 18								
	CONCENTRIC	RV 202/CON 22,5	M12	Ø15	42	68	1,5	19,5	22,5	
	ECCENTRIC	RV 202/ECC 22,5								
	CONCENTRIC	RV 202/CON 28	M12	Ø15	47,5	74	1,5	19,5	28	
	ECCENTRIC	RV 202/ECC 28								
	CONCENTRIC	RV 202/CON 8	M12	Ø15	27,5	54	1,5	19,5	8	
	ECCENTRIC	RV 202/ECC 8								
RV 203 / 17 KDD	CONCENTRIC	RV 203/CON 22	M14	Ø17	46	78	1,5	26	22	
	ECCENTRIC	RV 203/ECC 22								



BEARINGS (LFR)

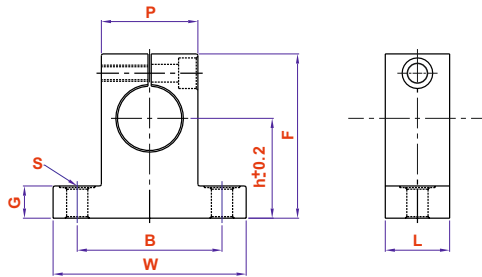
ΚΩΔΙΚΟΣ	LFR Type	PRODUCT NAME	S	A	B	D	d	TIMH
LFR 4	LFR 50/5-4 KDD	Bearings with Plastic Cap	4	18	8	16	5	
LFR 6	LFR 50/8-6 KDD	Bearings with Steel Cap	6	28	11	24	8	
LFR 10	LFR 5201-10 KDD	Bearings with Steel Cap	10	41	15,8	35	12	



BEARINGS (RV)

ΚΩΔΙΚΟΣ	RV Type	PRODUCT NAME	S	A	B	D	d	TIMH
RV 8	RV 200/8 KDD	Bearings with Steel Cap	8	37	14	32	10	
RV 12	RV 201/12 KDD	Bearings with Steel Cap	12	43,4	15,8	35	12	
RV 15	RV 202/15 KDD	Bearings with Steel Cap	20	55,8	20	41	15	
RV 17	RV 203/17 KDD	Bearings with Steel Cap	20	70	25	58	17	

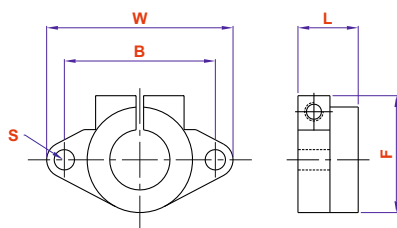
SK SHAFT END CONNECTION PART



ΚΩΔΙΚΟΣ	Type	Dimensions (mm)								Key Position Bolt	Connection Bolt	Weight (g)
		h	W	L	F	G	P	B	S			
SK 12	SK 12	23	42	14	37.5	6	20	32	5.5	M4	M5	30
SK 16	SK 16	27	48	16	44	8	25	38	5.5	M4	M5	40
SK 20	SK 20	31	60	20	50	10	30	45	6.6	M5	M6	70
SK 25	SK 25	35	70	24	60	12	38	56	6.6	M6	M6	130
SK 30	SK 30	42	84	28	70	12	44	64	9	M6	M8	180
SK 40	SK 40	60	114	36	96	15	60	90	11	M8	M10	420

TIMH

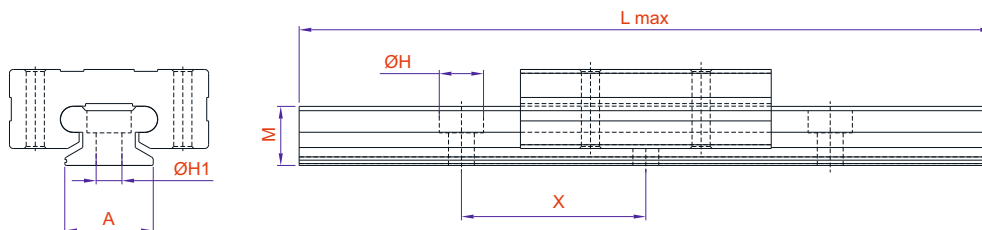
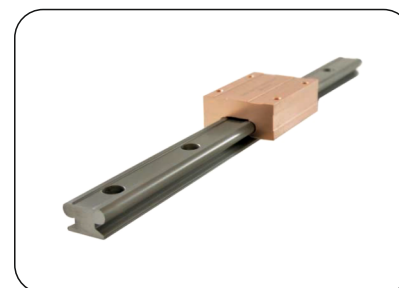
SHF SHAFT END CONNECTION PART



ΚΩΔΙΚΟΣ	Type	Dimensions (mm)					Tightening Hole	Connection Hole	Weight (g)
		W	L	F	B	S			
SHF 12	SHF 12	47	13	28	36	5.5	M4	M5	20
SHF 16	SHF 16	50	16	31	40	5.5	M4	M5	27
SHF 20	SHF 20	60	20	37	48	7	M5	M6	40
SHF 25	SHF 25	70	25	42	56	7	M5	M6	60
SHF 30	SHF 30	80	30	50	64	9	M6	M8	110
SHF 40	SHF 40	102	40	67	80	12,5	M10	M12	260

TIMH

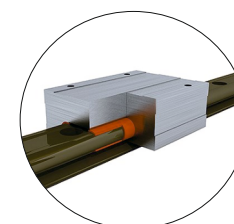
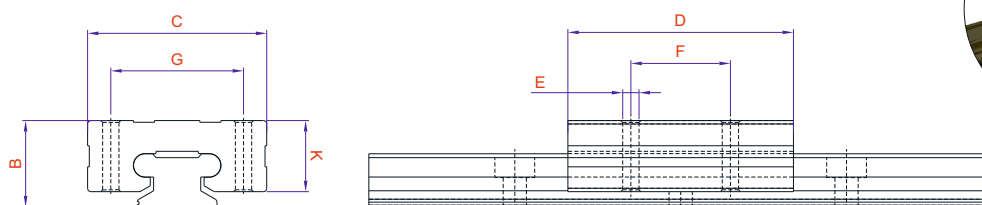
MINIATURE LINEAR GUIDE



PRODUCT NAME	Type	Dimensions (mm)						Load Capacity	
		L max	X	A	H	H1	M	Dynamic	Static
MINIATURE LINEAR GUIDE	MR07R-3600	3600	15	7	4,2	2,4	6,1	1512	1995
MINIATURE LINEAR GUIDE	MR09R-3600	3600	20	9	4,5	2,6	7,1	1659	2464
MINIATURE LINEAR GUIDE	MR012R-3600	3600	25	12	6	3,5	8	2481	3851
MINIATURE LINEAR GUIDE	MR015R-3600	3600	40	15	6	3,5	9,2	3585	6071
MINIATURE LINEAR GUIDE	MR020R-3600	3600	60	20	9,5	6	13,4	5778	11753

MINIATURE LINEAR GUIDE		
ΚΩΔΙΚΟΣ	TIMH/m KOMMATI	TIMH/m ΒΕΡΓΑΣ
MLG 7		
MLG 9		
MLG 12		
MLG 15		
MLG 20		

* 6061 T6 Aluminium Guide and its block



MINIATURE TEFLON LINEAR BLOCK

PRODUCT NAME	Type	C	D	F	G	B	E	K	Static Load
MINIATURE TEFLON LINEAR BLOCK	Mr7	17	24	8	12	8	M2X0.4	6,2	172,0
MINIATURE TEFLON LINEAR BLOCK	Mr9	20	30	13	15	10	M3X0.5	8	172,0
MINIATURE TEFLON LINEAR BLOCK	Mr12	27	34	15	20	13	M3X0.5	10,7	282,0
MINIATURE TEFLON LINEAR BLOCK	Mr15	32	42	20	25	16	M3X0.5	14,1	282,0
MINIATURE TEFLON LINEAR BLOCK	Mr20	46	62	38	38	25	M4X0.7	21,2	371,0

MINIATURE TEFLON LINEAR BLOCK	
ΚΩΔΙΚΟΣ	TIMH
MLB 7	
MLB 9	
MLB 12	
MLB 15	
MLB 20	

* Max. operating speed is 0,7 m/sec.

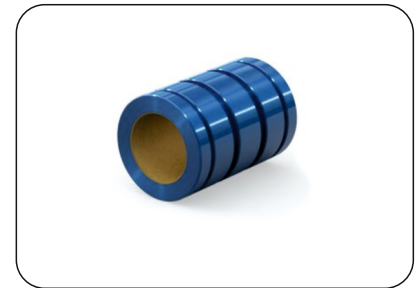
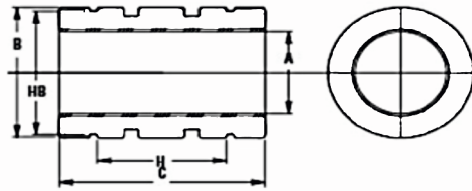
Advantages and Usage Areas:

This product is ideal for carrying low loads. Its teflon coating provide you with an opportunity self-oil characteristic according to the standard models. It can shave the sawdust and shavings off. It is appropriate for compact designs, 3d-printer and scanner systems which do not have to carry heavy loads.

SELF Lubricating Linear BEARINGS



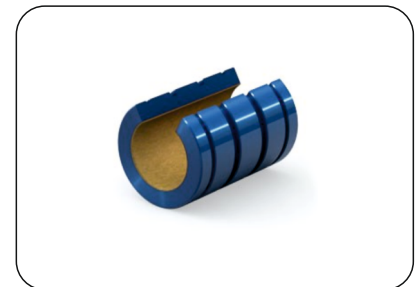
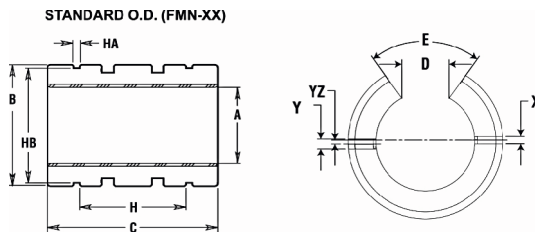
CLOSED TYPE



ΚΩΔΙΚΟΣ	PRODUCT NAME (Preload Serie)	A (mm)	ΚΩΔΙΚΟΣ	PRODUCT NAME (Standard Serie)	C (mm)	H (mm)	HB (mm)	B (mm)	A (mm)	TIMH
FM 8	FM 8	8.013-8.035	FMC 8	FMC 8	25	14	15,2	16	8.063-8.085	
FM 10	FM 10	10.013-10.035	FMC 10	FMC 10	29	19,4	18	19	10.063-10.085	
FM 12	FM 12	12.016-12.043	FMC 12	FMC 12	32	20	21	22	12.066-12.093	
FM 16	FM 16	16.016-16.043	FMC 16	FMC 16	36	22	24,9	26	16.066-16.093	
FM 20	FM 20	20.020-20.053	FMC 20	FMC 20	45	28	30,3	32	20.096-20.129	
FM 25	FM 25	25.020-25.053	FMC 25	FMC 25	58	40	37,5	40	25.096-25.129	
FM 30	FM 30	30.020-30.053	FMC 30	FMC 30	68	48	44,5	47	30.096-30.129	
FM 40	FM 40	40.025-40.064	FMC 40	FMC 40	80	56	59	62	40.127-40.166	
FM 50	FM 50	50.025-50.064	FMC 50	FMC 50	100	72	72	75	50.127-50.166	

* C means no preload

OPEN TYPE



ΚΩΔΙΚΟΣ	PRODUCT NAME (Preload Serie)	A (mm)	ΚΩΔΙΚΟΣ	PRODUCT NAME (Standard Serie)	X (mm)	Y (mm)	E	B (mm)	D (mm)	EFFECTIVE SURFACE AREA (cm ²)	STATIC LOADING (Kg)	TIMH
FMN 10	FMN 10	10.013-10.035	FMCN 10	FMCN 10	3	-	60°	19	6,4	2,9	305	
FMN 12	FMN 12	12.016-12.043	FMCN 12	FMCN 12	3	3	78°	22	7,6	3,8	403	
FMN 16	FMN 16	16.016-16.043	FMCN 16	FMCN 16	2	3	78°	26	10,4	5,8	605	
FMN 20	FMN 20	20.020-20.053	FMCN 20	FMCN 20	2	3	60°	32	10,8	9,0	945	
FMN 25	FMN 25	25.020-25.053	FMCN 25	FMCN 25	3	3	60°	40	13,2	14,5	1523	
FMN 30	FMN 30	30.020-30.053	FMCN 30	FMCN 30	3	3	72°	47	14,2	20,4	2142	
FMN 40	FMN 40	40.025-40.064	FMCN 40	FMCN 40	3	3	72°	62	19,5	32,0	3360	
FMN 50	FMN 50	50.025-50.064	FMCN 50	FMCN 50	3	5	72°	75	24,0	50,0	5250	

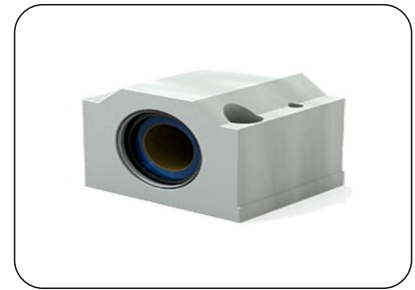
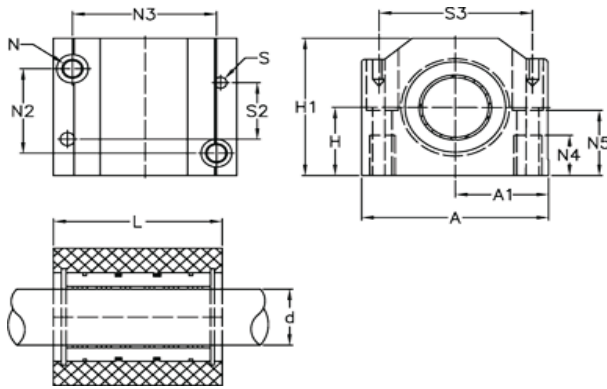
* Max. Dry Operating Speed: 0,71m/s

** Lubricated operating speed: 2,03m/s

Advantages and Usage Areas:

This teflon bearing can carry heavier loads than standard linear bearings can do and also it is more resistive. Because of its teflon coating this product provides you with an opportunity self-oil characteristic. Therefore you don't need to lubricate it. It can shave the sawdust and shavings off. It can also operate between -240°C / +204°C due to its teflon coating by comparison with standard linear bearings. Because standard linear bearings can operate maximum 80 °C.

CAGED FULL CLOSED TYPE

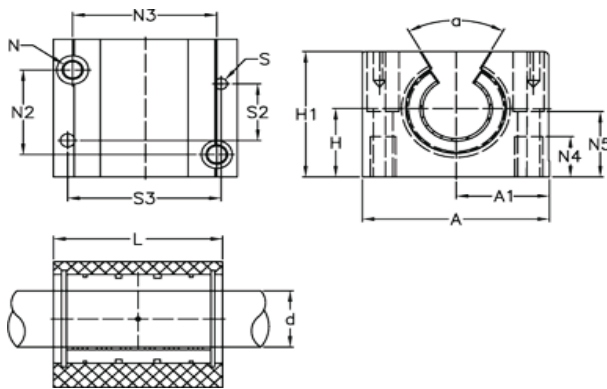


ΚΩΔΙΚΟΣ	PRODUCT NAME (Preload Serie)	ΚΩΔΙΚΟΣ	PRODUCT NAME (Standard Serie)	d (mm)	A (mm)	L (mm)	N3 (mm)	S3 (mm)	H1 (mm)	STATIC Loading (Kg)	N	N2	N4	N5	A1	H	S
PM 12	PM 12	PM 12C	PM 12C	12	43	39	32.15	34	35	2	M5X0.8	23,15	11	16,5	21,5	18	4
PM 16	PM 16	PM 16C	PM 16C	16	53	43	40.15	42	42	2	M6X1	26,15	13	21	26,5	22	4
PM 20	PM 20	PM 20C	PM 20C	20	60	54	45.15	50	50	2	M8X1.25	32,15	18	24	30	25	5
PM 25	PM 25	PM 25C	PM 25C	25	78	67	60.15	64	60	3	M10X1.5	40,15	22	29	39	60	6
PM 30	PM 30	PM 30C	PM 30C	30	87	79	68.15	72	71	3	M10X1.5	45,15	22	34	43,5	35	6
PM 40	PM 40	PM 40C	PM 40C	40	108	91	86.15	90	91	4	M12X1.75	58,15	26	44	54	45	8

TIMH

* C serie is a serie without preload.

OPEN CAGED TYPE



ΚΩΔΙΚΟΣ	PRODUCT NAME (Preload Serie)	ΚΩΔΙΚΟΣ	PRODUCT NAME (Standard Serie)	d (mm)	A (mm)	L (mm)	N3 (mm)	S3 (mm)	H1 (mm)	STATIC Loading (Kg)	N	N2	N4	N5	A1	H	S
PMN 12	PMN 12	PMN 12C	PMN 12C	12	43	39	32.15	34	28	2	M5X0.8	23,15	11	16,5	21,5	18	4
PMN 16	PMN 16	PMN 16C	PMN 16C	16	53	43	40.15	42	35	2	M6X1	26,15	13	21	26,5	22	4
PMN 20	PMN 20	PMN 20C	PMN 20C	20	60	54	45.15	50	42	2	M8X1.25	32,15	18	24	30	25	5
PMN 25	PMN 25	PMN 25C	PMN 25C	25	78	67	60.15	64	51	3	M10X1.5	40,15	22	29	39	60	6
PMN 30	PMN 30	PMN 30C	PMN 30C	30	87	79	68.15	72	60	3	M10X1.5	45,15	22	34	43,5	35	6
PMN 40	PMN 40	PMN 40C	PMN 40C	40	108	91	86.15	90	77	4	M12X1.75	58,15	26	44	54	45	8

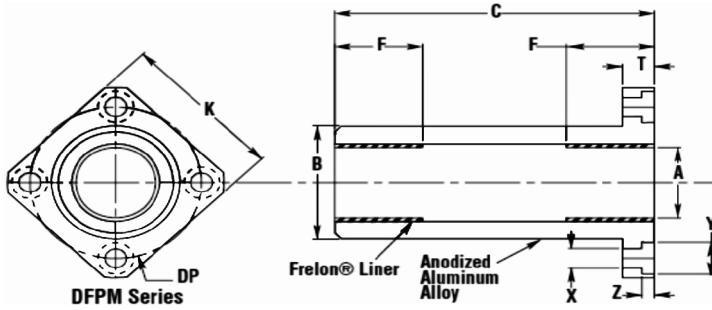
TIMH

Advantages and Usage Areas:

This teflon linear bearing is more resistive by comparison with standard caged linear bearings because its friction surface is teflon. Due to its high quality surface it does not damage the linear shafts. It does not require to oil but nevertheless if it is lubricated, its productivity increases. It is appropriate for hard-to-maintain systems that can operate at high temperatures.

SQUARE FLANGED LONG TYPE

SQUARE FLANGED LONG TEFLON BEARING



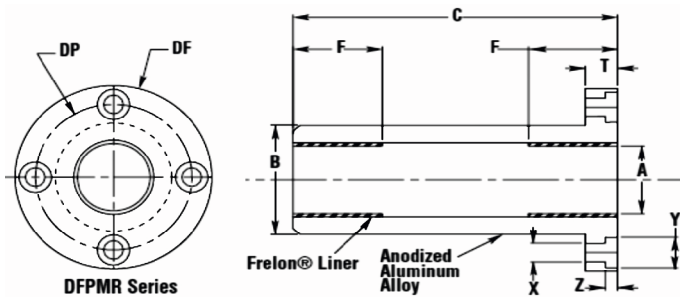
ΚΩΔΙΚΟΣ	PRODUCT NAME (Preload Serie)	A (mm)	ΚΩΔΙΚΟΣ	PRODUCT NAME (Standard Serie)	A (mm)	B (mm)	C (mm)	K (mm)	DP (mm)	F	T	X	Y	Z	STATIC Loading (Kg)
DFPM 12	DFPM 12	12.016-12.043	DFPM 12C	DFPM 12C	12.066-12.093	22	57	32	32	15	9	4,5	7,5	4,1	408
DFPM 16	DFPM 16	16.016-16.043	DFPM 16C	DFPM 16C	16.066-16.093	26	70	35	36	20	9	4,5	7,5	4,1	721
DFPM 20	DFPM 20	20.020-20.053	DFPM 20C	DFPM 20C	20.096-20.129	32	80	42	43	22	11	5,5	9	5,1	976
DFPM 25	DFPM 25	25.020-25.053	DFPM 25C	DFPM 25C	25.096-25.129	40	112	50	51	33	11	5,5	9	5,1	1.828
DFPM 30	DFPM 30	30.020-30.053	DFPM 30C	DFPM 30C	30.096-30.129	47	123	60	62	40	14	6,6	11	6,1	2.319
DFPM 40	DFPM 40	40.025-40.064	DFPM 40C	DFPM 40C	40.127-40.166	62	151	75	80	44	18	9,0	14	8,1	3.887
DFPM 50	DFPM 50	50.025-50.064	DFPM 50C	DFPM 50C	50.127-50.166	75	192	88	94	70	18	9,0	14	8,1	7.674

TIMH

* C serie is a serie without preload.

ROUND FLANGED LONG TEFLON BEARING

ROUND FLANGED LONG TYPE



ΚΩΔΙΚΟΣ	PRODUCT NAME (Preload Serie)	A (mm)	ΚΩΔΙΚΟΣ	PRODUCT NAME (Standard Serie)	A (mm)	B (mm)	C (mm)	DP (mm)	DF (mm)	F	T	X	Y	Z	STATIC Loading (Kg)
DFPMR 12	DFPMR 12	12.016-12.043	DFPMR 12C	DFPMR 12C	12.066-12.093	22	57	32	42	15	9	5	8	4,1	424
DFPMR 16	DFPMR 16	16.016-16.043	DFPMR 16C	DFPMR 16C	16.066-16.093	26	70	36	46	20	9	5	8	4,1	636
DFPMR 20	DFPMR 20	20.020-20.053	DFPMR 20C	DFPMR 20C	20.096-20.129	32	80	43	54	22	11	6	9	5,1	994
DFPMR 25	DFPMR 25	25.020-25.053	DFPMR 25C	DFPMR 25C	25.096-25.129	40	112	51	62	33	11	6	9	5	1.601
DFPMR 30	DFPMR 30	30.020-30.053	DFPMR 30C	DFPMR 30C	30.096-30.129	47	123	62	76	40	14	7	11	6	2.253
DFPMR 40	DFPMR 40	40.025-40.064	DFPMR 40C	DFPMR 40C	40.127-40.166	62	151	80	98	44	18	9	14	8	3.534
DFPMR 50	DFPMR 50	50.025-50.064	DFPMR 50C	DFPMR 50C	50.127-50.166	75	192	94	112	70	18	9	14	8	5.521

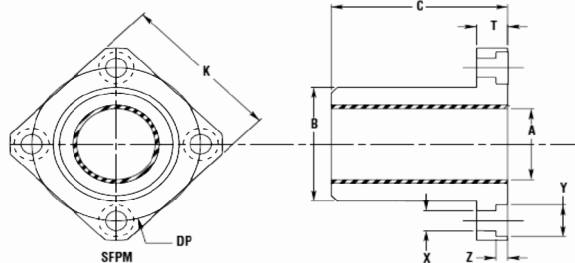
TIMH

Advantages and Usage Areas:

This teflon linear bearing is more resistive by comparison with standard caged linear bearings because its friction surface is teflon. Due to its high quality surface it does not damage the linear shafts. It does not require to oil but nevertheless if it is lubricated, its productivity increases. It is appropriate for hard-to-maintain systems that can operate at high temperatures.

SQUARE FLANGED SHORT TYPE

SQUARE FLANGED SHORT TEFLON BEARING



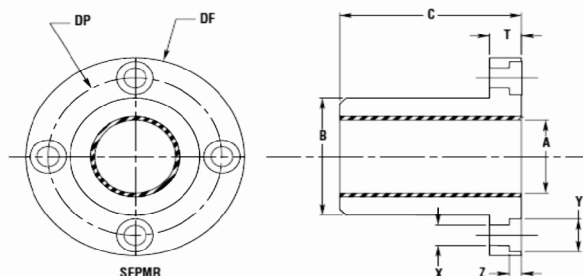
ΚΩΔΙΚΟΣ	Preload Serie	A (mm)	ΚΩΔΙΚΟΣ	Standard Serie	A (mm)	B (mm)	C (mm)	K (mm)	DP (mm)	T	X	Y	Z	STATIC Loading (Kg)
SFPM 12	SFPM 12	12.016-12.043	SFPM 12C	SFPM 12C	12.066-12.093	22	32	32	32	11	4,5	7,5	4,1	424
SPFM 16	SPFM 16	16.016-16.043	SPFM 16C	SPFM 16C	16.066-16.093	26	36	35	36	11	4,5	7,5	4,1	636
SPFM 20	SPFM 20	20.020-20.053	SPFM 20C	SPFM 20C	20.096-20.129	32	45	42	43	11	5,5	9	5,1	994
SPFM 25	SPFM 25	25.020-25.053	SPFM 25C	SPFM 25C	25.096-25.129	40	58	50	51	11	5,5	9	5,1	1.601
SPFM 30	SPFM 30	30.020-30.053	SPFM 30C	SPFM 30C	30.096-30.129	47	68	60	62	14	6,6	11	6,6	2.253
SPFM 40	SPFM 40	40.025-40.064	SPFM 40C	SPFM 40C	40.127-40.166	62	80	75	80	18	9	14	8,1	3.534
SPFM 50	SPFM 50	50.025-50.064	SPFM 50C	SPFM 50C	50.127-50.166	75	100	88	94	18	9	14	8	5.521

TIMH

* C serie is a serie without preload.

ROUND FLANGED SHORT TYPE

ROUND FLANGED SHORT TEFLON BEARING



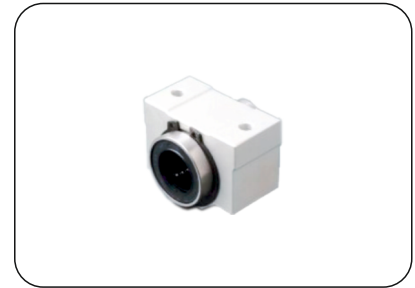
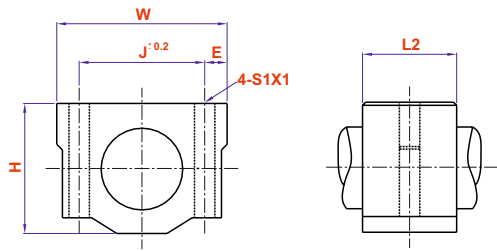
ΚΩΔΙΚΟΣ	PRODUCT NAME (Preload Serie)	A (mm)	ΚΩΔΙΚΟΣ	PRODUCT NAME (Standard Serie)	A (mm)	B (mm)	C (mm)	DP (mm)	DF (mm)	T	X	Y	Z	STATIC Loading (Kg)
SFPMR 12	SFPMR 12	12.016-12.043	SFPMR 12C	SFPMR 12C	12.066-12.093	22	32	32	42	11	4,5	7,5	4,1	424
SPFMR 16	SPFMR 16	16.016-16.043	SPFMR 16C	SPFMR 16C	16.066-16.093	26	36	36	46	11	4,5	7,5	4,1	636
SPFMR 20	SPFMR 20	20.020-20.053	SPFMR 20C	SPFMR 20C	20.096-20.129	32	45	43	54	11	5,5	9	5,1	994
SPFMR 25	SPFMR 25	25.020-25.053	SPFMR 25C	SPFMR 25C	25.096-25.129	40	58	51	62	11	5,5	9	5,1	1.601
SPFMR 30	SPFMR 30	30.020-30.053	SPFMR 30C	SPFMR 30C	30.096-30.129	47	68	62	76	14	6,6	11	6,6	2.253
SPFMR 40	SPFMR 40	40.025-40.064	SPFMR 40C	SPFMR 40C	40.127-40.166	62	80	80	98	18	9	14	8,1	3.534
SPFMR 50	SPFMR 50	50.025-50.064	SPFMR 50C	SPFMR 50C	50.127-50.166	75	100	94	112	18	9	14	8	5.521

TIMH

Advantages and Usage Areas:

This teflon linear bearing is more resistive by comparison with standard caged linear bearings because its friction surface is teflon. Due to its high quality surface it does not damage the linear shafts. It does not require to lubricate but nevertheless if it is oiled its productivity increases. It is appropriate for hard-to-maintain systems that can operate at high temperatures.

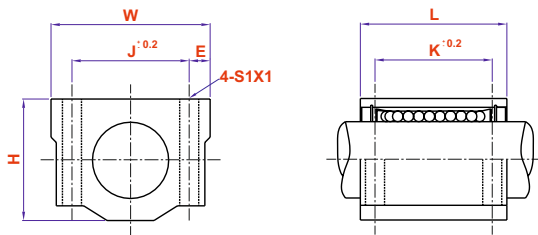
CAGED BEARINGS (CLOSED)



SCE-VUU

ΚΩΔΙΚΟΣ	Type	Dimensions (mm)						Basic Load Evaluation		Weight (g)	SCE-VUU L2	TIMH
		W	H	A	J	E	S1X1	Dynamic	Static			
SCE 16 VUU	SCE 16 VUU	50	38.5	9	36	7	M5x12	770	1170	180	23.6	
SCE 20 VUU	SCE 20 VUU	54	41	11	40	7	M6x12	860	1370	245	28.3	
SCE 25 VUU	SCE 25 VUU	76	51.5	12	54	11	M8x18	980	1560	550	38	
SCE 30 VUU	SCE 30 VUU	78	60	15	58	10	M8x18	1560	2740	760	41	
SCE 40 VUU	SCE 40 VUU	102	78	20	80	11	M10x25	2150	4010	1.700	56.4	

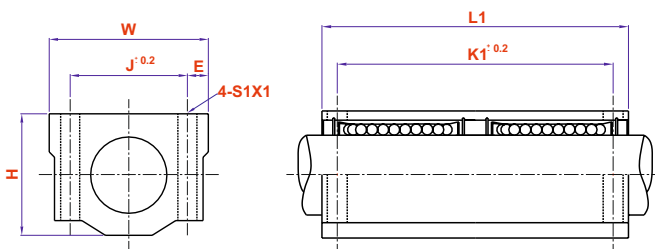
CAGED BEARINGS (CLOSED)



SCE-UU

ΚΩΔΙΚΟΣ	MODEL	Dimensions (mm)						Load Capacity		Weight (g)	SCE---UU		TIMH
		W	H	J	E	S1X1	Dynamic	Static	K		L		
SCE 08 UU	SCE 08 UU	34	22	24	5	M4x8	274	392	52	18	30		
SCE 16 UU	SCE 16 UU	50	38.5	36	7	M5x12	774	1180	200	34	44		
SCE 20 UU	SCE 20 UU	54	41	40	7	M6x12	882	1370	255	40	50		
SCE 25 UU	SCE 25 UU	76	51.5	54	11	M8x18	980	1570	600	50	67		
SCE 30 UU	SCE 30 UU	78	60	58	10	M8x18	1570	2740	735	58	72		
SCE 40 UU	SCE 40 UU	102	78	80	11	M10x25	2160	4020	1.590	60	90		

CAGED BEARINGS (CLOSED)



SCE-LUU

ΚΩΔΙΚΟΣ	Type	Dimensions (mm)						Load Capacity		Weight (g)	SCE---LUU		TIMH
		W	H	J	E	S1X1	Dynamic	Static	K1		L1		
SCE 16 LUU	SCE 16 LUU	50	38.5	36	7	M5x12	774	1.180	376	60	85		
SCE 20 LUU	SCE 20 LUU	54	41	40	7	M6x12	882	1.370	476	70	96		
SCE 25 LUU	SCE 25 LUU	76	51.5	54	11	M8x18	980	1.570	1.115	100	130		
SCE 30 LUU	SCE 30 LUU	78	60	58	10	M8x18	1.570	2.740	1.375	110	140		
SCE 40 LUU	SCE 40 LUU	102	78	80	11	M10x25	2.160	4.020	3.200	140	175		

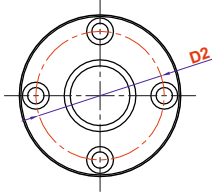
SQUARE LONG



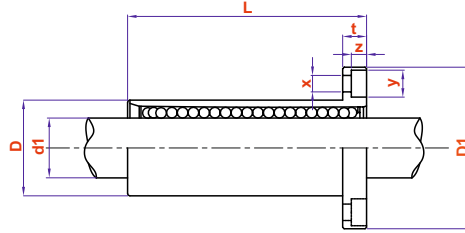
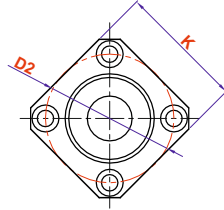
ROUND LONG



LMEF - LUU



LMEK - LUU



ΚΩΔΙΚΟΣ	Type	Dimensions (mm)										Load Capacity		TIMH
		d1	D	L	D1	K	t	D2	x	y	z	Dynamic	Static	
LMEF 16 LUU	LMEF 16 LUU	16	26	68	46	-	6	36	4.5	7.5	4.1	912	1.780	
LMEF 20 LUU	LMEF 20 LUU	20	32	80	54	-	8	43	5.5	9	5.1	1.370	2.740	
LMEF 25 LUU	LMEF 25 LUU	25	40	112	62	-	8	51	5.5	9	5.1	1.570	3.140	
LMEF 30 LUU	LMEF 30 LUU	30	47	123	76	-	10	62	6.6	11	6.1	2.500	5.490	
LMEF 40 LUU	LMEF 40 LUU	40	62	151	98	-	13	80	9	14	8.1	3.430	8.040	
LMEK 16 LUU	LMEK 16 LUU	16	26	68	46	35	6	36	4.5	7.5	4.1	912	1.780	
LMEK 20 LUU	LMEK 20 LUU	20	32	80	54	42	8	43	5.5	9	5.1	1.370	2.740	
LMEK 25 LUU	LMEK 25 LUU	25	40	112	62	50	8	51	5.5	9	5.1	1.570	3.140	
LMEK 30 LUU	LMEK 30 LUU	30	47	123	76	60	10	62	6.6	11	6.1	2.500	5.490	
LMEK 40 LUU	LMEK 40 LUU	40	62	151	98	75	13	80	9	14	8.1	3.430	8.040	

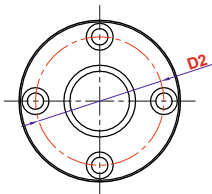
SQUARE SHORT



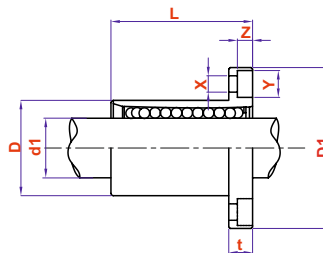
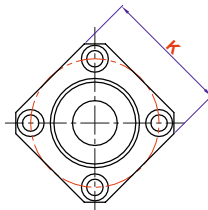
ROUND SHORT



LMEF - UU

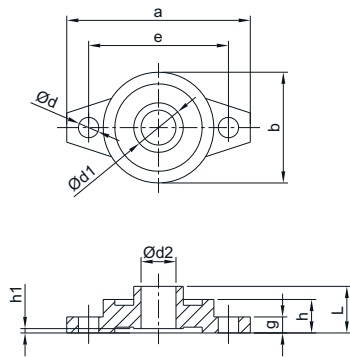


LMEK - UU



ΚΩΔΙΚΟΣ	Type	Dimensions (mm)										Load Capacity		TIMH
		d1	D	L	D1	K	t	D2	x	y	z	Dynamic	Static	
LMEF 12 UU	LMEF 12 UU	12	22	32	42	-	6	32	4.5	8	4	500	700	
LMEF 16 UU	LMEF 16 UU	16	26	36	46	-	6	36	4.5	8	4	570	890	
LMEF 20 UU	LMEF 20 UU	20	32	45	54	-	8	43	5.5	9.5	5.5	860	1370	
LMEF 25 UU	LMEF 25 UU	25	40	58	62	-	8	51	5.5	9.5	5.5	980	1560	
LMEF 30 UU	LMEF 30 UU	30	47	68	76	-	10	62	6.6	11	6.5	1560	2740	
LMEF 40 UU	LMEF 40 UU	40	62	80	98	-	13	80	9	14	8.5	2150	4010	
LMEK 16 UU	LMEK 16 UU	16	26	36	46	35	6	36	4.5	8	4	570	890	
LMEK 20 UU	LMEK 20 UU	20	32	45	54	42	8	43	5.5	9.5	5.5	860	1370	
LMEK 25 UU	LMEK 25 UU	25	40	58	62	50	8	51	5.5	9.5	4.5	980	1560	
LMEK 30 UU	LMEK 30 UU	30	47	68	76	60	10	62	6.6	11	6.5	1560	2740	
LMEK 40 UU	LMEK 40 UU	40	62	80	98	75	13	80	9	14	8.5	2150	4010	

PILLOW BEARING (CASTING)

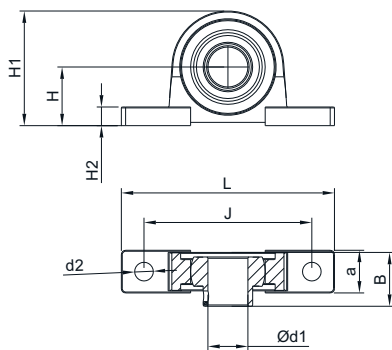


UFL

UFL Bearing (Casting)

ΚΩΔΙΚΟΣ	Type	PRODUCT NAME	a	e	b	d	d1	d2	g	L	h	h1	kg	TIMH
UFL 000	UFL 000	Ø10 BEARING	60	45	36	7	14	10	5,5	15,5	11,5	0,5	0,1	
UFL 001	UFL 001	Ø12 BEARING	63	48	38	7	17	12	5,5	16	11,5	1,5	0,1	
UFL 002	UFL 002	Ø 15 BEARING	67	53	42	7	20	15	6,5	17,5	13,5	1	0,1	
UFL 003	UFL 003	Ø 17 BEARING	71	56	46	7	23	17	7	18,5	14	1	0,2	
UFL 004	UFL 004	Ø 20 BEARING	90	71	56	10	27	20	8	22	16	1	0,2	
UFL 005	UFL 005	Ø 25 BEARING	95	75	60	10	32	25	8	23,5	16	1	0,2	
UFL 006	UFL 006	Ø 30 BEARING	112	85	70	13	39	30	9	25,5	18	1	0,3	
UFL 007	UFL 007	Ø 35 BEARING	122	95	80	14	43	35	10	29,5	20	1	0,42	

PILLOW BEARING (CASTING)

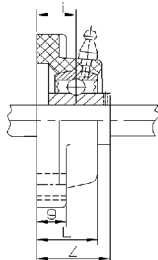
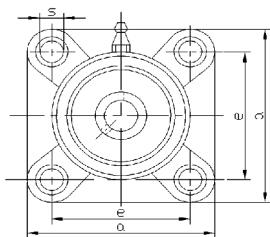


UP

UP Bearing (Casting)

ΚΩΔΙΚΟΣ	Type	PRODUCT NAME	d1	d2	H	H1	H2	L	J	a	B	TIMH
UP 00	UP 00	Ø10 BEARING	10	6,8	18	35,2	6	67	53	16	15	
UP 01	UP 01	Ø12 BEARING	12	6,8	19	38	6,2	71	50	16	16	
UP 02	UP 02	Ø 15 BEARING	15	6,8	22	43	6,9	80	63	16	16,5	
UP 03	UP 03	Ø 17 BEARING	17	6,8	24	46,9	7	85	67	18	17,5	
UP 04	UP 04	Ø 20 BEARING	20	10	28	54,5	9,3	100	80	20	21	
UP 05	UP 05	Ø 25 BEARING	25	10	32	62	10	112	90	20	22,5	
UP 06	UP 06	Ø 30 BEARING	30	13	36	70	11	132	105,5	26	24,5	

PILLOW BEARING (CASTING)

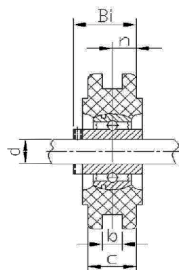
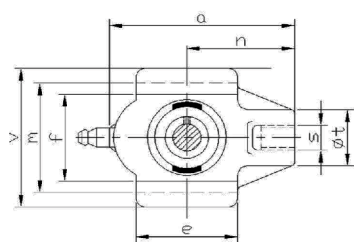


UCF

UCF Bearing (Casting)

ΚΩΔΙΚΟΣ	Type	PRODUCT NAME	Z	A	E	L	G	i	S	De	TIMH
UCF 201	UCF 201	Ø 12 BEARING	33,3	86	64	25,5	11	15	12	M10	
UCF 202	UCF 202	Ø 15 BEARING	33,3	86	64	25,5	11	15	12	M10	
UCF 203	UCF 203	Ø 17 BEARING	33,3	86	64	25,5	11	15	12	M10	
UCF 204	UCF 204	Ø 20 BEARING	33,3	86	64	25,5	11	15	12	M10	
UCF 205	UCF 205	Ø 25 BEARING	35,7	95	70	27	13	16	12	M10	
UCF 206	UCF 206	Ø 30 BEARING	40,2	108	83	31	13	18	12	M10	
UCF 207	UCF 207	Ø 35 BEARING	44,4	117	92	34	15	19	14	M12	
UCF 208	UCF 208	Ø 55 BEARING	51,2	130	102	36	15	21	16	M14	

PILLOW STAINLESS BEARING (PLASTIC)

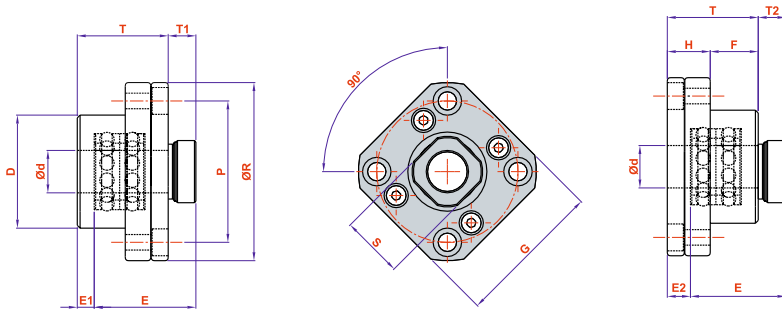


SUCT

SUCT Stainless Bearing (Plastic)

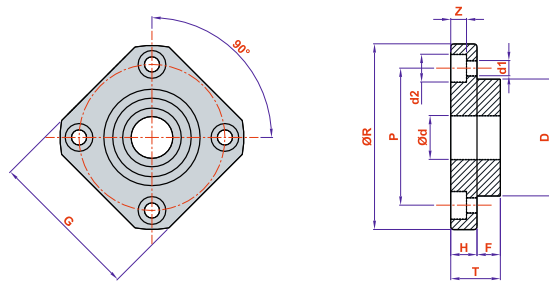
ΚΩΔΙΚΟΣ	Type	PRODUCT NAME	Bi	a	c	b	v	m	h	t	e	n	s	d	TIMH
SUCT 201	SUCT 201	Ø 12 STAINLESS BEARING	31	99	27,5	12	88	76	64	36	47	12,7	M16	20	
SUCT 202	SUCT 202	Ø 15 STAINLESS BEARING	31	99	27,5	12	88	76	64	36	47	12,7	M16	20	
SUCT 203	SUCT 203	Ø 17 STAINLESS BEARING	31	99	27,5	12	88	76	64	36	47	12,7	M16	20	
SUCT 204	SUCT 204	Ø 20 STAINLESS BEARING	31	99	27,5	12	88	76	64	36	47	12,7	M16	20	
SUCT 205	SUCT 205	Ø 25 STAINLESS BEARING	34	99	27,5	12	88	76	64	36	47	14,3	M16	25	
SUCT 206	SUCT 206	Ø 30 STAINLESS BEARING	38,1	125	34,5	12	102	89	74	40	63	15,9	M16	30	
SUCT 207	SUCT 207	Ø 35 STAINLESS BEARING	42,9	125	34,5	12	102	89	74	40	63	17,5	M16	35	
SUCT 208	SUCT 208	Ø 40 STAINLESS BEARING	49,2	140	34,5	16	114	102	85	40	80	19	M16	40	

BALLSCREW END SUPPORT UNIT



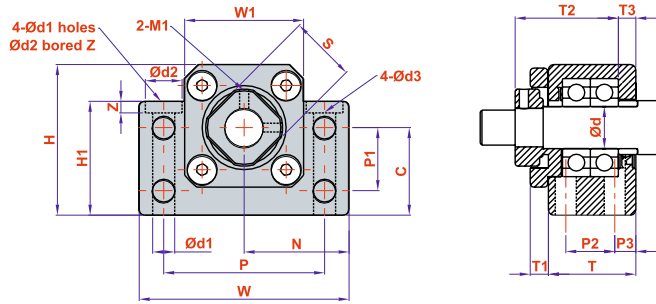
ΚΩΔΙΚΟΣ	Type	Dimensions (mm)											Set A		Set B		TIMH	
		Ød	R	G	T	H	F	D	E	P	d1	d2	S	T1	E1	T2		E2
FK 10	FK 10	10	52	42	27	10	17	34	17	42	4.5	8	15.8	7.3	5	8.5	6	
FK 12	FK 12	12	54	44	27	10	17	36	17	44	4.5	8	19	7.3	5	8.5	6	
FK 15	FK 15	15	63	52	32	15	17	40	17	50	5.5	9.5	22	10	6	12	8	
FK 20	FK 20	20	85	68	52	22	30	57	30	70	6.6	11	30	10	10	12	14	
FK 25	FK 25	25	98	79	57	27	30	63	30	80	9	15	35	13	10	20	16.5	
FK 30	FK 30	30	117	93	62	30	32	75	32	95	11	17.5	40	11	12	17.5	17.6	

BALLSCREW END SUPPORT UNIT



ΚΩΔΙΚΟΣ	Type	Dimensions (mm)											TIMH
		Ød	R	G	T	H	F	D	P	d1	d2	Z	
FF 10	FF 10	8	43	35	12	7	5	28	35	3.4	6	3.4	
FF 12	FF 12	10	52	42	15	7	8	34	42	4.2	8	4.4	
FF 15	FF 15	15	63	52	17	9	8	40	50	5.2	9.5	5.4	
FF 20	FF 20	20	85	68	20	11	9	57	70	6.3	11	6.5	
FF 25	FF 25	25	98	79	24	14	10	63	80	8.7	14	8.6	
FF 30	FF 30	30	117	93	27	18	9	75	95	10.7	17.5	10.8	

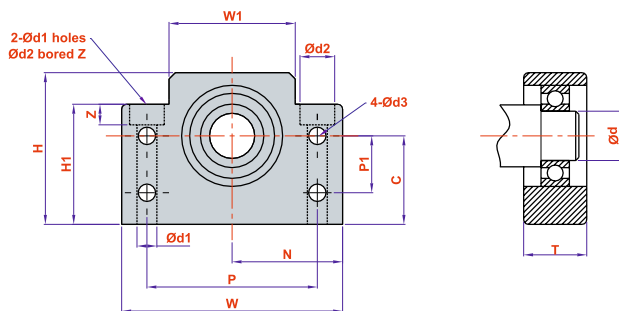
BALLSCREW END SUPPORT UNIT



BK SERIES

ΚΩΔΙΚΟΣ	Type	Dimensions (mm)																		TIMH	
		Ød	T	T1	T2	T3	W	W1	H	H1	N	C	P	P1	P2	P3	Ød1	Ød2	Z		Ød3
BK 10	BK 10	10	25	5	29.5	5	60	34	39	32.5	30	22	46	13	13	6	6.3	10.5	1.5	5.5	
BK 12	BK 12	12	25	5	29.5	5	60	34	42	32.5	30	25	46	18	13	6	6.3	10.5	1.5	5.5	
BK 15	BK 15	15	27	6	32	6	70	38	47	38	35	28	54	18	15	6	6.3	10.5	6.5	5.5	
BK 17	BK 17	17	35	9	44	7	86	48	63	55	43	39	68	28	19	8	8.7	14	8.6	6.6	
BK 20	BK 20	20	35	8	45	8	88	50	59	50	44	34	70	22	19	8	8.7	14	8.5	6.6	
BK 25	BK 25	25	42	12	54	9	106	62	79	70	53	48	85	33	22	10	10.7	17.5	10.8	9	
BK 30	BK 30	30	45	14.2	61	9	128	74	88	78	64	51	102	33	23	11	13.7	20	13	11	
BK 40	BK 40	40	61	18.2	76	15	160	98	109	90	80	60	130	37	23	14	17.7	26	17.5	14	

BALLSCREW END SUPPORT UNIT

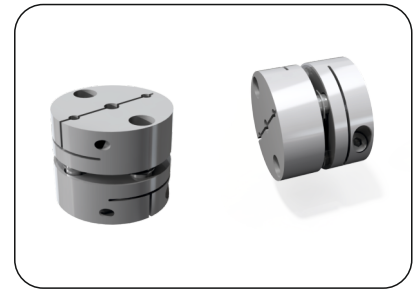
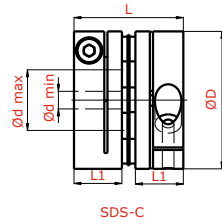


BF SERIES

ΚΩΔΙΚΟΣ	Type	Dimensions (mm)															TIMH
		Ød	T	W	W1	H	H1	P	P1	Ød1	Ød2	Z	Ød3	N	C		
BF 10	BF 10	8	20	60	34	39	32.5	46	15	6.3	10.5	5	5.5	17	22		
BF 12	BF 12	10	20	60	34	43	32.5	46	18	6.3	10.5	1.5	5.5	30	25		
BF 15	BF 15	15	20	70	40	48	38	54	18	6.3	10.5	6.5	5.5	35	28		
BF 17	BF 17	17	23	86	50	64	55	68	28	8.7	14	8.6	6.6	43	39		
BF 20	BF 20	20	26	88	52	60	50	70	22	8.7	14	8.6	6.6	44	34		
BF 25	BF 25	25	30	106	64	80	70	85	33	10.7	17.5	11	9.3	53	48		
BF 30	BF 30	30	32	128	76	89	78	102	33	13.7	20	12.5	11	64	51		
BF 40	BF 40	40	37	160	100	109	90	130	37	17.7	26	17.5	14	80	60		

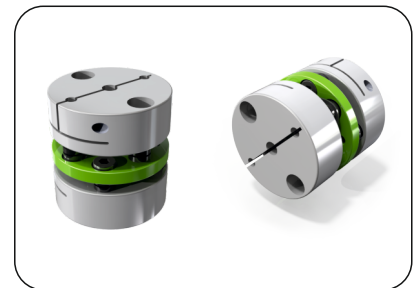
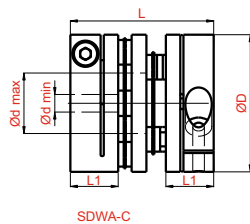


CYLINDRICAL DISC COUPLINGS (SINGLE)



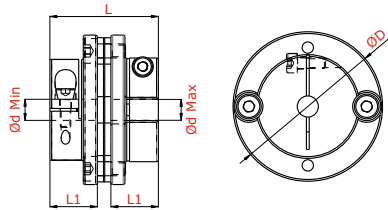
ΚΩΔΙΚΟΣ	Type	Dimensions (mm)						Max Angular Offset (°)	Max Axial Offset (mm)	Max Torque (Nm)	Max. Rpm (rpm)	TIMH
		Inner Dia d min	Inner Dia d max	Outer Dia D	Length L	L1	M					
SDS-16C	SDS-16C	3	5	16	17,4	7,8	2	1	0	1,0	14.000	
SDS-19C	SDS-19C	3	6	19	19,3	8,7	2,6	1	0	1,8	14.000	
SDS-22C	SDS-22C	3	8	22,2	19,7	8,7	2,6	1	0	2,2	10.000	
SDS-26C	SDS-26C	4	10	26,6	24,1	10,6	3	1	0	3,0	10.000	
SDS-31C	SDS-31C	5	14	31,8	26,4	11,6	3	1	0	6,0	9.000	
SDS-39C	SDS-39C	5	16	39	31,3	13,7	4	1	0	10	8.000	

CYLINDRICAL DISC COUPLINGS (DOUBLE)



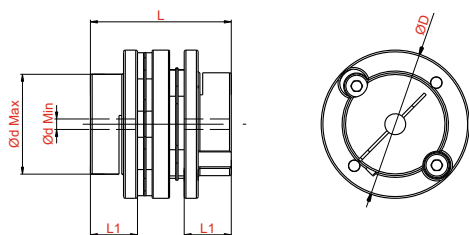
ΚΩΔΙΚΟΣ	Type	Dimensions (mm)						Max Angular Offset (°)	Max Axial Offset (mm)	Max Torque (Nm)	Max. Rpm (rpm)	TIMH
		Inner Dia d min	Inner Dia d max	Outer Dia D	Length L	L1-L2	M					
SDWA-16C	SDWA-16C	3	5	16	21,1	7,8	2	1	0,05	1,0	14.000	
SDWA-19C	SDWA-19C	3	6	19	23,3	8,7	2,6	1	0,05	1,8	14.000	
SDWA-22C	SDWA-22C	3	8	22,2	25	8,7	2,6	1,5	0,12	2,2	10.000	
SDWA-26C	SDWA-26C	4	10	26,6	32,5	10,6	3	1,5	0,15	3,0	10.000	
SDWA-31C	SDWA-31C	5	14	31,8	33,5	11,6	3	1,5	0,15	6,0	9.000	
SDWA-39C	SDWA-39C	5	16	39	39,5	13,7	4	1,5	0,18	10	8.000	

FLANGED DISC COUPLINGS (SINGLE)



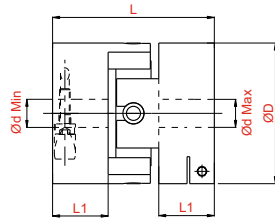
ΚΩΔΙΚΟΣ	Type	Dimensions (mm)						Max Angular Offset (°)	Max Axial Offset (mm)	Max Torque (Nm)	Max. Rpm (rpm)	TIMH
		Inner Dia d min	Inner Dia d max	Outer Dia D	Length L	L1-L2	M					
SDS-42C	SDS-42C	6	15	42,5	30,8	13,4	3	1	0	14	8.000	
SDS-47C	SDS-47C	8	19	47	37	16,7	4	1	0	24	8.000	
SDS-54C	SDS-54C	10	20	54	47,1	21,4	5	1	0	44	8.000	
SDS-64C	SDS-64C	12	22	64	58,2	26	6	1	0	62	7.000	
SDS-80C	SDS-80C	15	32	80	66,1	29,7	8	1	0	150	7.000	

FLANGED DISC COUPLINGS (DOUBLE)



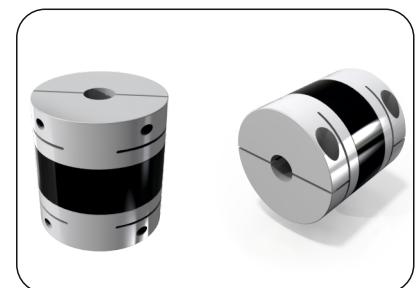
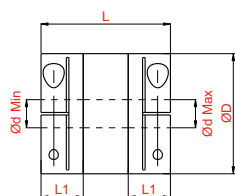
ΚΩΔΙΚΟΣ	Type	Dimensions (mm)						Max Angular Offset (°)	Max Axial Offset (mm)	Max Torque (Nm)	Max. Rpm (rpm)	TIMH
		Inner Dia d min	Inner Dia d max	Outer Dia D	Length L	L1-L2	M					
SDWA-42C	SDWA-42C	6	17	42,5	39,7	13,4	3	1,5	0,18	14	8.000	
SDWA-47C	SDWA-47C	8	20	47	45,6	16,7	4	1,5	0,2	24	7.500	
SDWA-54C	SDWA-54C	10	25	54	60,6	21,4	5	1,5	0,2	44	7.500	
SDWA-64C	SDWA-64C	12	24	64	74,4	26	6	1,5	0,3	62	6.500	
SDWA-80C	SDWA-80C	15	32	80	81	29,7	8	2	0,5	150	6.000	

CROSS JOINT COUPLINGS



ΚΩΔΙΚΟΣ	Type	Dimensions (mm)						Max Angular Offset (°)	Max Axial Offset (mm)	Max Torque (Nm)	Max. Rpm (rpm)	TIMH
		Inner Dia d min	Inner Dia d min	Outer Dia D	Length L	L1	M					
SCJA-15C	SCJA-15C	3	6	15	22,2	8	2,6	1,5	0,3	0,5	21.000	
SCJA-20C	SCJA-20C	4	8	20	23,4	7,9	2,6	1,5	0,5	1	16.000	
SCJA-25C	SCJA-25C	5	10	25	30,4	10,4	3	1,5	0,5	2	12.000	
SCJA-32C	SCJA-32C	6	14	32	39	13,5	4	1,5	0,5	4	9.000	
SCJA-40C	SCJA-40C	8	15	40	45,6	16	5	1,5	0,5	10	7.000	

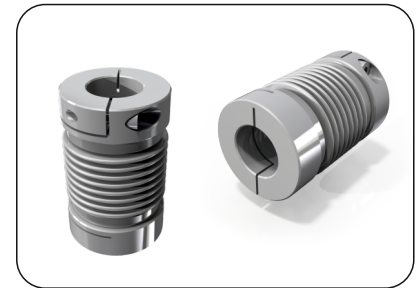
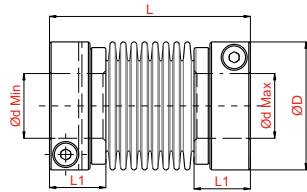
RUBBER COUPLINGS



ΚΩΔΙΚΟΣ	Type	Dimensions (mm)						Max Angular Offset (°)	Max Axial Offset (mm)	Max Torque (Nm)	Max. Rpm (rpm)	TIMH
		Inner Dia d min	Inner Dia d min	Outer Dia D	Length L	L1	M					
SHR-14C	SHR-14C	3	6	13,8	22,4	6,7	1,6	1,5	0,15	2,0	42.000	
SHR-18C	SHR-18C	4	8	17,8	25,5	7,95	2	1,5	0,15	3,8	33.000	
SHR-24C	SHR-24C	5	12	23,8	31,2	9,6	2,6	1,5	0,15	7,0	25.000	
SHR-29C	SHR-29C	6	15	28,8	35	11	3	1,5	0,2	11,4	21.000	
SHR-33C	SHR-33C	8	16	32,8	37	12	3	1,5	0,2	14,0	18.000	
SHR-38C	SHR-38C	8	20	37,8	47	15,5	4	1,5	0,2	24,0	16.000	
SHR-43C	SHR-43C	10	20	42,8	48	15,5	4	1,5	0,2	32,0	14.000	
SHR-55C	SHR-55C	12	25	54,8	59	19,5	5	1,5	0,2	63,0	11.000	

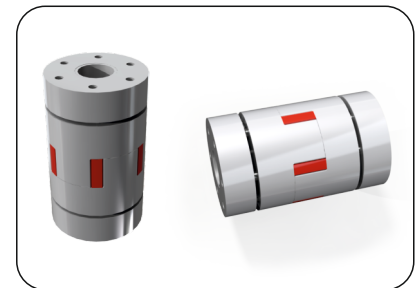
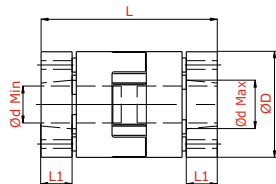


Bellow Couplings



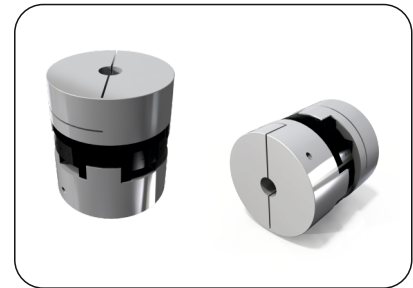
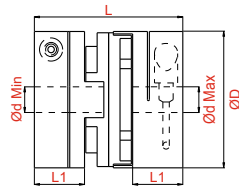
ΚΩΔΙΚΟΣ	Type	Dimensions (mm)						Max Angular Misalignment (°)	Max Axial Misalignment (mm)	Max. Torque (Nm)	Max. rpm (rpm)	TIMH
		Inside Dia d min	Inside Dia d max	Outside Dia D	Length L	L1-L2	M					
BW-16C	BW-16C	4	8	16	30	10,5	3	1,5	0,3	1,6	18.000	
BW-20C	BW-20C	5	12	20	33	12,5	3	2,0	0,35	3	13.000	
BW-25C	BW-25C	5	12	25	38	14	3	2,0	0,4	4	14.000	
BW-32C	BW-32C	6	16	32	43	13,5	4	2,0	0,5	5	10.000	
BW-40C	BW-40C	8	20	40	62	21	5	2,0	0,6	20	8.000	
BW-55C	BW-55C	10	30	55	74	23	6	2,0	0,8	50	6.000	
BW-65C	BW-65C	12	38	65	81	25,5	8	2,0	0,8	120	4.500	
BW-82C	BW-82C	14	42	82	103	34,5	8	2,0	1,0	160	4.000	

Jaw Couplings With Ringfeder



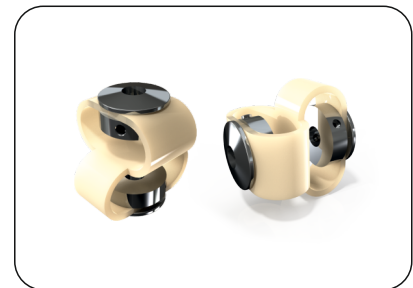
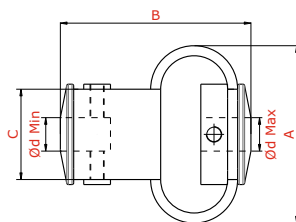
ΚΩΔΙΚΟΣ	Type	Dimensions (mm)						Max Angular Misalignment (°)	Max Axial Misalignment (mm)	Max. Torque (Nm)	Max. rpm (rpm)	TIMH
		Inside Dia d min	Inside Dia d max	Outside Dia D	Length L	L1-L2	M					
JM-30T	JM-30T	6	14	30	50	8	3	0,9	+1,0, -1,0	25	25.000	
JM-40T	JM-40T	10	20	40	66	12	4	0,9	+1,2, -1,0	34	16.500	
JM-55T	JM-55T	11	28	55	78	15	5	0,9	+1,4, -1,0	120	12.200	
JM-65T	JM-65T	15	38	65	90	17	5	0,9	+1,5, -1,4	320	10.500	
JM-80T	JM-80T	20	45	80	114	24	6	0,9	+1,8, -1,4	650	8.650	

OLDHAM COUPLING



ΚΩΔΙΚΟΣ	Type	Dimensions (mm)						Max Angular Offset (°)	Max Axial Offset (mm)	Max Torque (Nm)	Max. Rpm (rpm)	TIMH
		Inner Dia d min	Inner Dia d max	Outer Dia D	Length L	L1-L2	M					
SOH-16C	SOH-16C	3	6	16	23,9	7,7	2,6	1,5	1	2	13.000	
SOH-20C	SOH-20C	4	8	20	25,7	8	2,6	1,5	1,5	3	11.000	
SOH-25C	SOH-25C	5	10	25,5	32	10,2	3	1,5	2	5	10.000	
SOH-32C	SOH-32C	6	15	32	44,7	14,4	4	1,5	2,5	14	9.000	
SOH-43C	SOH-43C	8	16	43	52	16,5	5	1,5	3	25	8.000	
SOH-53C	SOH-53C	10	25	53	58,3	19,5	5	1,5	3,2	40	7.000	
SOH-70C	SOH-70C	18	35	73	75,5	25	8	1,5	3,5	120	4.500	

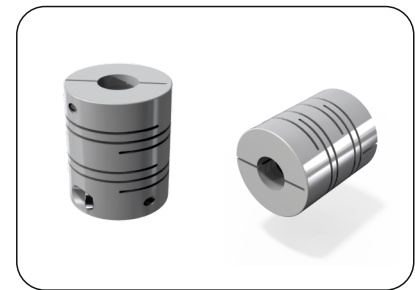
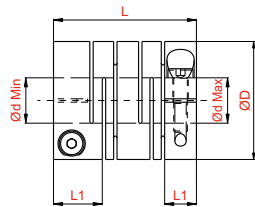
PLASTIC COUPLING



ΚΩΔΙΚΟΣ	Type	Dimensions (mm)						Max Angular Offset (°)	Max Axial Offset (mm)	Max Torque (Nm)	Max. Rpm (rpm)	TIMH
		Inner Dia d min	Inner Dia d max	Outer Dia D	Length L	A	M					
SFC-29	SFC-29	4	10	18	28	25	4	10	2	0,35	3.000	
SFC-38	SFC-38	6	12	22,5	35	32	4	10	2,5	1,35	3.000	
SFC-48	SFC-48	8	14	26	50	43	5	12	2,5	1,80	3.000	
SFC-54	SFC-54	10	16	29,5	59	50	6	12	3	4,50	3.000	



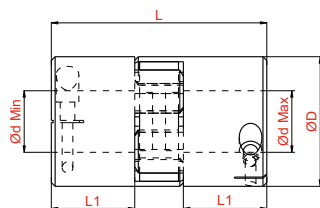
Flexible Beam Couplings



ΚΩΔΙΚΟΣ	Type	Dimensions (mm)						Max Angular Offset (°)	Max Axial Offset (mm)	Max Torque (Nm)	Max. Rpm (rpm)	TIMH
		Inner Dia d min	Inner Dia d max	Outer Dia D	Length L	L1-L2	M					
JT-16C	JT-16C	5	8	16	23	6,5	2,5	2	+0.4, -0.4	1	24.000	
JT-20C	JT-20C	5	10	20	26	7,5	3	2	+0.4, -0.4	2	20.000	
JT-25C	JT-25C	5	12	25	31	8,5	3	2	+0.5, -0.5	4	15.000	
JT-32C	JT-32C	8	16	32	41	12	4	2	+0.5, -0.5	8	12.000	
JT-40C	JT-40C	8	20	40	56	17	5	2	+0.5, -0.5	16	9.500	
JT-50C	JT-50C	12	25	50	71	21	6	2	+0.5, -0.5	32	7.000	
JT-63C	JT-63C	14	35	63	90	26	8	2	+0.5, -0.5	64	6.000	



Flexible Beam Couplings



ΚΩΔΙΚΟΣ	Type	Dimensions (mm)						Max Angular Offset (°)	Max Axial Offset (mm)	Max Torque (Nm)	Max. Rpm (rpm)	TIMH
		Inner Dia d min	Inner Dia d max	Outer Dia D	Length L	L1-L2	M					
JM-16C	JM-16C	4	7	16	22	7	2,5	0,9	+0.6, -0.3	4	24.700	
JM-25C	JM-25C	4	12	25	34	11	4	0,9	+0.8, -0.4	18	17.000	
JM-30C	JM-30C	5	16	30	35	11	4	0,9	+1.0, -0.5	25	12.600	
JM-40C	JM-40C	8	24	40	66	25	5	0,9	+1.2, -0.5	34	9.000	
JM-55C	JM-55C	10	28	55	78	30	6	0,9	+1.4, -0.5	120	6.500	
JM-95C	JM-95C	14	55	95	126	50	10	0,9	+2.0, -1.0	900	3.800	
JM-105C	JM-105C	19,80	62	105	140	56	12	0,9	+2.1, -1.0	1.050	3.300	
JM-120C	JM-120C	20	74	120	163	69	12	0,9	+2.2, -1.0	1.370	2.800	

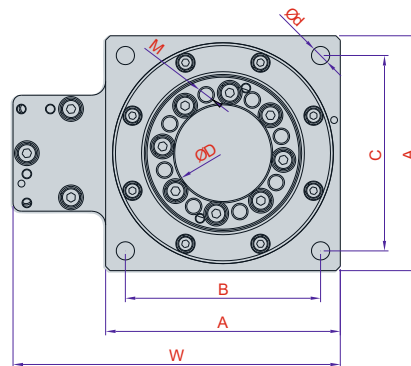
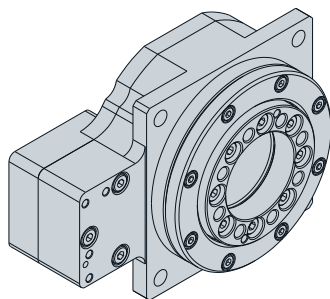
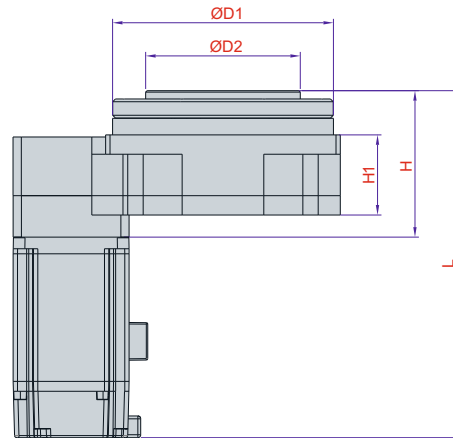
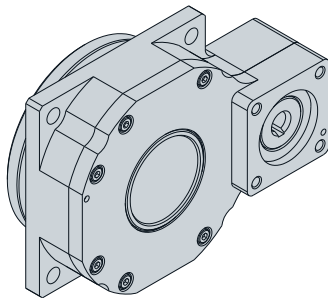
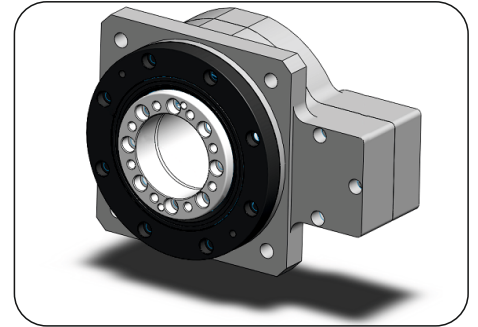
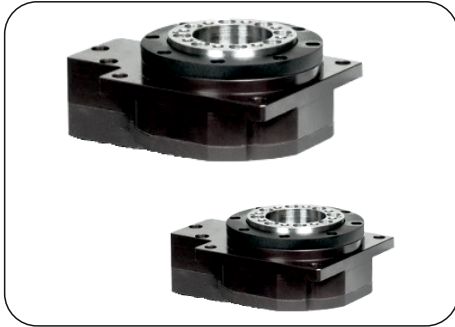
Box Filling Systems (Saddle)



Robot Applications (Joint Component)

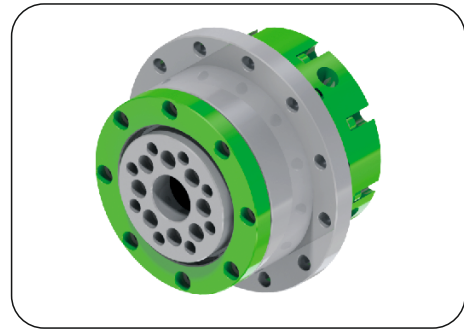


ROTARY TABLE

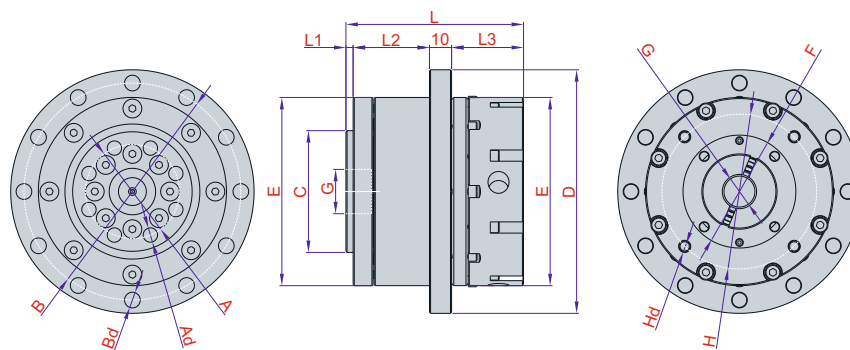


ΚΩΔΙΚΟΣ	Type	PRODUCT NAME	A	B	C	W	H	H1	L	D	D1	D2	d	M	Max. Load(kgf)	Motor	TIMH
RT NT-60	NT60 i:10	ROTARY TABLE Ø060 i:10	60	50	50	85	56,6	29	157	28	60	45	5	3	30	100 W SERVO	
RT NT-85	NT85 i:30	ROTARY TABLE Ø085 i:30	85	70,7	70,7	118	53	29	153	35	80	56	6,6	5	50	100 W SERVO	
RT NT-130	NT130 i:10	ROTARY TABLE Ø130 i:10	130	102,5	102,5	178	81,6	55	212	50	125	75	9	5	200	400 W SERVO	
RT NT-230	NT230 i:10	ROTARY TABLE Ø230 i:10	235	198	198	332,5	129	34	276	105	230	150	9	6	835	1000 W SERVO	

CYCLOID BALL REDUCERS

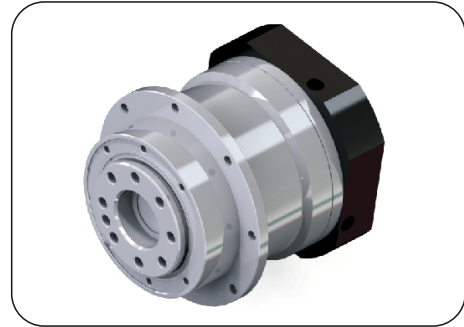


Features/Models	Ratio	SBRU110	SBRU130	SBRU200
Continuous Torque (kgf*m/Nm)	10	-	-	-
	15	-	-	-
	20	-	2.93/28.71	-
	30	-	2.13/20.87	9.33/91.43
	40	-	2.5/24.5	14.4/141.12
	50	1.96/19.21	2.43/23.81	10.64/104.27
Max Torque (kgf*m/Nm)	10~50	Three Times Rated Output Torque		
Breaking Point (kgf*m/Nm)	10~50	Six Times Rated Torque		
Inertia (kg*cm ²)	10~50	0.42	0.56	2.6
Max. Revolution (rpm / min)	10~50	3000		
Max. Radial Load (kgf)	10~50	50	170	200
Input Shaft Diameter (mm)	10~50	14	14	19, 22, 24
Soft input measurement (mm)	10~50	X	X	X
Weight (kg)	10~50	2.5	4.3	12.65

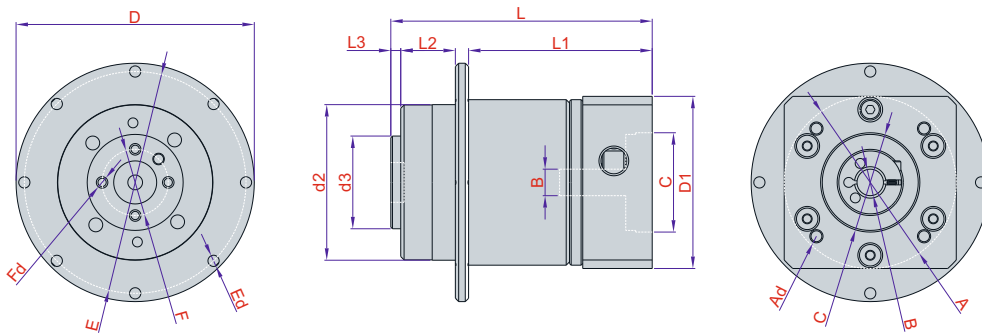


ΚΩΔΙΚΟΣ	Type	PRODUCT NAME	A	Ad	B	Bd	C	D	E	G	H	Hd	L	L1	L2	L3	Weight (kg)	TIMH	
CR-SBRU 110	SBRU 110	CYCLOID Reducer	42,5	8 x M6	98	12 x Ø6.6	55	110	85	50	14	70	4 x M5	80,25	3,25	34,5	32,5	2,5	
CR-SBRU 130	SBRU 130	CYCLOID Reducer	40	6 x M8	117	12 x Ø6.6	60	130	104	50	14	70	4 x M5	81,25	5	41,75	24,5	4,3	
CR-SBRU 200	SBRU 200	CYCLOID Reducer	40	6 x M8	117	12 x Ø6.6	60	130	104	50	14	70	4 x M5	81,25	5	41,75	24,5	4,3	

CYCLOID BALL REDUCERS



Features/Models	Ratio	SBDE50	SBDE70	SBDE90
Continuous Torque (kgf*m/Nm)	10	1.43/14.01	3.22/31.55	4/3.92
	15	-	2.11/20.68	2.78/27.24
	20	-	1.57/15.39	3.93/38.51
	30	1.16/11.37	2.19/21.46	1.8/17.64
	40	-	1.64/16.07	2.88/28.22
	50	1.96/19.21	2.43/23.81	10.64/104.27
Max. Torque (kgf*m/Nm)	10~50	Three Times Rated Output Torque		
Breaking Point (kgf*m/Nm)	10~50	Six Times Rated Torque		
Inertia (kg*cm ²)	10~50	0.06	0.14	0.92
Max. Revolution (rpm / min)	10~50	3000		
Max. Radial Load (kgf)	10~50	25	40	108
Input Shaft Diameter (mm)	10~50	X	14	16~19
Soft input measurement (mm)	10~50	8	X	X
Weight (kg)	10~50	0.46	3.4	4.3



ΚΩΔΙΚΟΣ	Type	PRODUCT NAME	A	Ad	B	C	D	d1	d2	d3	E	Ed	F	Fd	L	L1	L2	L3	Weight (kg)	TIMH
CR-SBDE 50	SBDE 50	CYCLOID Reducer	46	4 x M4	8	30	72	52	47	28	60	8 x Ø 3.4	20	4 x M3	79	55,5	16,5	3	0,46	
CR-SBDE 70	SBDE 70	CYCLOID Reducer	70	4 x M5	14	50	86	70	64	40	79	8 x Ø 4.5	31,5	8 x M5	98,8	75,3	16,5	3	3,4	
CR-SBDE 90	SBDE 90	CYCLOID Reducer	90	4 x M6	16	70	118	118	90	63	107	8 x Ø 5.5	50	8 x M6	120	83,6	24	5,5	4,3	

SERVO MOTOR and DRIVERS



SERVO MOTOR and DRIVERS (without brakes)

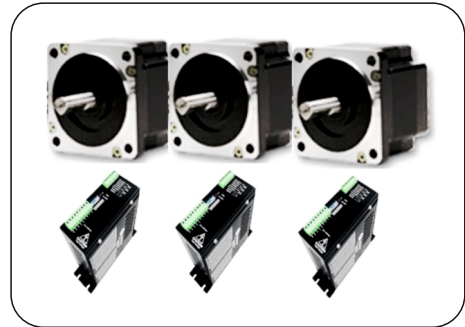
ΚΩΔΙΚΟΣ	PRODUCT NAME	TIMH
SMD 200W	200W 0,6Nm 3000d/d 5000 Pulse 220 V AC	
SMD 400W	400W 1,3Nm 3000d/d 5000 Pulse 220 V AC	
SMD 750W	750W 2,4Nm 3000d/d 5000 Pulse 220 V AC	
SMD 1KW	1KW 5Nm 2000d/d 5000 Pulse 220 V AC	
SMD 1,2KW	1,2KW 5,74Nm 2000d/d 5000 Pulse 220 V AC	
SMD 1,5KW	1,5KW 7Nm 2000d/d 5000 Pulse 220 V AC	
SMD 2KW	2KW 10Nm 2000d/d 5000 Pulse 220 V AC	
SMD 2,2KWM	2,2KW 10,5Nm 2000d/d 5000 Pulse 220 V AC	
SMD 2,2KW	2,2KW 10,5Nm 2000d/d 5000 Pul 380VAC	
SMD 3KWM	3KW 15Nm 2000d/d 5000 Pul 220VAC	
SMD 3KW	3KW 15Nm 2000d/d 5000 Pul 380VAC	
SMD 4,5KWM	4,5KW 28Nm 1500d/d 5000 Pul 220VAC	
SMD 4,5KW	4,5KW 28Nm 1500d/d 5000 Pul 380VAC	
SMD 25,5KW	5,5KW 35Nm 1500d/d 5000 Pul 380VAC	
SMD 7,5W	7,5KW 50Nm 1500d/d 5000 Pul 380VAC	

SERVO MOTOR and DRIVERS (with brakes)

ΚΩΔΙΚΟΣ	PRODUCT NAME	TIMH
SMDB 200W	200W 0,6Nm 3000d/d 5000 Pulse 220 V AC	
SMDB 400W	400W 1,3Nm 3000d/d 5000 Pulse 220 V AC	
SMDB 750W	750W 2,4Nm 3000d/d 5000 Pulse 220 V AC	
SMDB 1KW	1KW 5Nm 2000d/d 5000 Pulse 220 V AC	
SMDB 1,5KW	1,5KW 7Nm 2000d/d 5000 Pulse 220 V AC	
SMDB 2KW	2KW 10Nm 2000d/d 5000 Pulse 220 V AC	

STEPPER MOTOR and DRIVERS

MCM



STEPPER MOTORS



ΚΩΔΙΚΟΣ	Type	POWER	CURRENT	CABLE	FLANGE (NM)	Appropriate DRIVER	TIMH
42MV04	42MV04	0,4 Nm	1,7	4	NEMA17 (42mm)	M542	
57MC20	57MC20	1,2 Nm	3	4	NEMA23 (57mm)	M542	
57MC20	57MC20	2 Nm	3	4	NEMA23 (57mm)	M542	
57MC20	57MC20	2,2 Nm	3	8	NEMA23 (57mm)	M542	
60MC30	60MC30	3 Nm	3	4	NEMA24 (60mm)	M542	
86MC45	86MC45	4,5 Nm	5	8	NEMA34 (86mm)	MA860H	
86MC85	86MC85	8,5 Nm	5	8	NEMA34 (86mm)	MA860H	
86MC120	86MC120	12 Nm	5	8	NEMA34 (86mm)	MA860H-ND2278	
110MC280	110MC280	28 Nm	8	8	NEMA42 (110mm)	ND2278	

STEPPER MOTOR DRIVERS



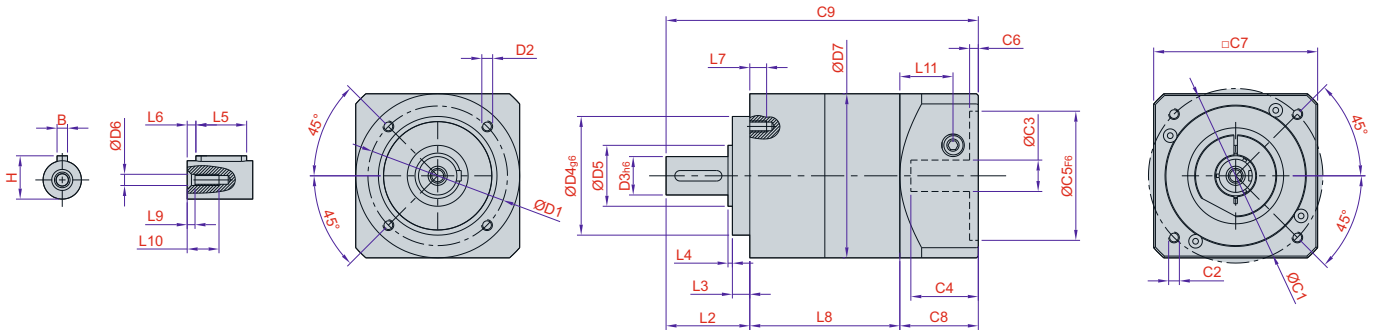
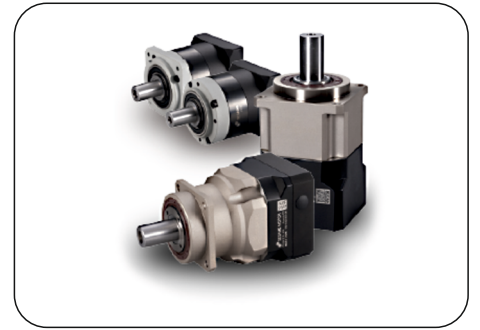
ΚΩΔΙΚΟΣ	Type	CURRENT	VOLTAGE	TIMH
M542	M542	4,2	DC 24-48	
MA860H	MA860H	7,2	AC/DC 36-80	
ND2278	ND2278	7,8	AC 80-220	
DM870	DM870	7,0	DC 24-72	

POWER SUPPLY



ΚΩΔΙΚΟΣ	Type	ÇIKIŞ VOLTAJI	ÇIKIŞ (A)	GÜÇ	TIMH
GK 15-5	GK 15-5	5 VDC	3	15 WATT	
GK 100-24	GK 100-24	24 VDC	4,2	100 WATT	
GK 150-24	GK 150-24	24 VDC	6,5	150 WATT	
GK 350-24	GK 350-24	24 VDC	14,6	350 WATT	
G350-36	G350-36	36 VDC	7,9	350 WATT	
GK 350-48	GK 350-48	48 VDC	7,2	350 WATT	
TRAFO 250-30	TRAFO 250-30	30 VDC	8,3	250 WATT	
TRAFO 750-48	TRAFO 750-48	48 VDC	15,6	750 WATT	
TRAFO 750-48-30	TRAFO 750-48-30	48-30 VDC	13,4 - 3	750 WATT	
TRAFO 1000-48	TRAFO 1000-48	48 VDC	28,8	1000 WATT	

PLANETARY GEARBOXES



ÖLÇÜLER	PEC50	PEC70	PEC90	PEC120	PEC155
D1	44	62	80	108	140
D2	M4x0.7P	M5x0.8P	M6x1P	M8x1.25P	M8x1.5P
D3 _{h6}	13	16	22	32	40
D4 _{g6}	35	52	68	90	120
D5	15	25	35	45	50
D6	M4x0.7P	M5x0.8P	M8x1.25P	M12x1.75P	M16x2P
D7	50	70	94	120	155
L1	-	-	-	-	-
L2	24.5	35	48	60	93
L3	4	5	10	6	8
L4	1.5	1.5	1.5	3	6
L5	15	25	32	40	60
L6	2	2	3	5	5
L7	8	10	10	15	18
L8	56	66	86	109	140
L9	4	4	4.5	6	6
L10	14	16.5	20.5	30	38
L11	24.4	31.5	36.5	42	63
C1	46	70	90	115	145
C2	M4x0.7P M5x0.8P	M4x0.7P M5x0.8P M6x1.0P	M6x1.0P M8x1.25P M10x1.5P	M6x1.0P M8x1.25P M10x1.5P	M8x1.25P M10x1.5P M12x1.75P
C3	≤ 8	≤ 11, 12.7, 14	≤ 14, 16, 19, 22, 24	≤ 19, 22, 24	≤ 19, 22, 24, 35
C4	27	35	43	58	66
C5	30, 50	50, 60, 73	70, 73, 80, 90, 95, 110	70, 73, 80, 90, 95, 110	80, 95, 110, 130
C6	4	5	5	8	6
C7	46, 50, 55, 60	60, 70, 80, 85	80, 85, 90, 94, 110, 130	80, 85, 90, 94, 110, 130	120, 130, 140, 150
C8	34	44	50	63	80
C9	114.5	145	184	232	313
B	5	5	6	10	12
H	15	18	24.5	35	43

Spur Gear Reducers Cylindrical Body Two Stages (i-15/40)

ΚΩΔΙΚΟΣ	PRODUCT NAME	RATIO
PEC 050	PEC 050	15-25-40-70
PEC 070	PEC 070	15-20-25-40-70
PEC 090	PEC 090	20-25-40-70
PEC 120	PEC 120	15-20-25
PEC 155	PEC 155	15-25-40-70

TIMH

Spur Gear Reducers Cylindrical Body Single Stage (i-3/10)

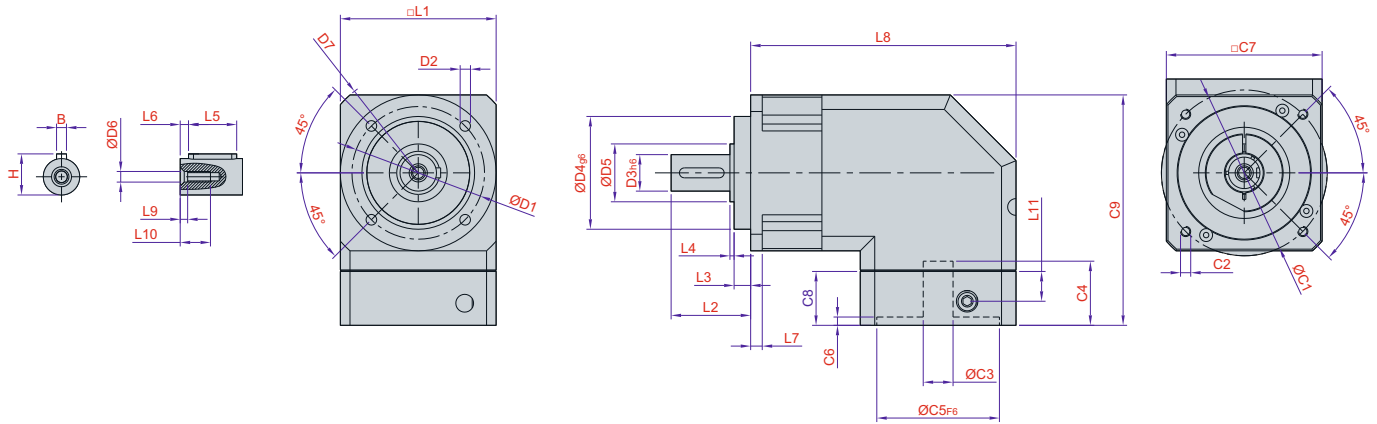
ΚΩΔΙΚΟΣ	PRODUCT NAME	RATIO
PEC 050	PEC 050	03-04-05-10
PEC 070	PEC 070	03-04-05-07-10
PEC 090	PEC 090	03-04-05-07-10
PEC 120	PEC 120	04-07-10
PEC 155	PEC 155	05-10

TIMH

Type the ratio instead of XXX characters in the code.

Flange connections for other brands of servo motors, please contact our sales representative.

PLANETARY GEARBOXES (90° SWITCHED)



DIMENSIONS	PGR42	PGR60	PGR90	PGR115
D1	50	70	100	130
D2	3.4	5.5	6.5	8.5
D3h6	13	16	22	32
D4g6	35	50	80	110
D5	15	25	35	45
D6	M4x0.7P	M5x0.8P	M8x1.25P	M12x1.75P
D7	56	80	118	148
L1	42.6	60	90	115
L2	26	37	48	62
L3	5.5	7	10	8
L4	1.5	1.5	1.5	3
L5	15	25	32	40
L6	2	2	3	5
L7	4	6	8	12
L8	103.6	148.7	204	244.5
L9	4	4	4.5	6
L10	14	16.5	20.5	30
L11	13.5	21.5	22	32
C1	46	70	90	115
C2	M4x0.7P M5x0.8P	M4x0.7P M5x0.8P M6x1.0P	M6x1.0P M8x1.25P M10x1.5P	M6x1.0P M8x1.25P M10x1.5P
C3	≤ 8	≤ 11, 12.7, 14	≤ 14, 16, 19, 22, 24	≤ 19, 22, 24
C4	29	34	44	53
C5	30, 50	50, 60, 73	70, 73, 80, 90, 95, 110	70, 73, 80, 90, 95, 110
C6	6	5	5	6
C7	46, 50, 55, 60	60, 70, 80, 85	80, 85, 90, 94, 110, 130	80, 85, 90, 94, 110, 130
C8	25	33	35	48
C9	70.8	107.8	135	174.5
B	5	5	6	10
H	15	18	24.5	35

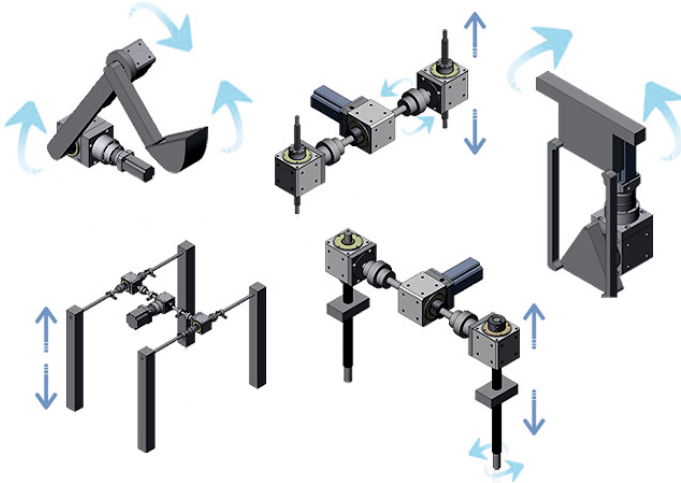
ΚΩΔΙΚΟΣ	PRODUCT NAME	RATIO	TIMH
PGR 042	PGR 042	03-04-05-10	
PGR 060	PGR 060	03-04-05-07-10	
PGR 090	PGR 090	03-04-05-07-10	
PGR 115	PGR 115	04-07-10	

Type the ratio instead of XXX characters in the code.

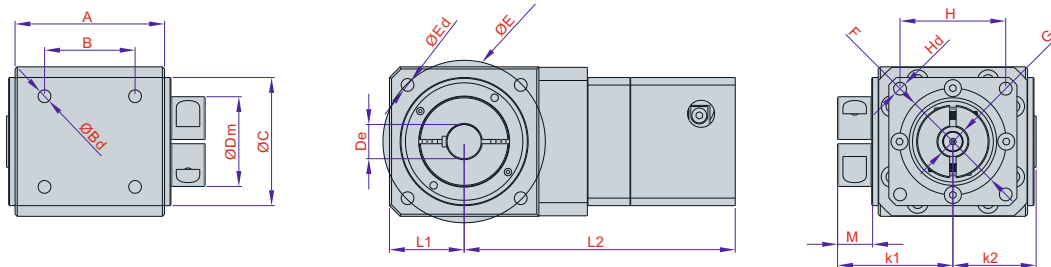
REDUCERS (DIRECTION CHANGER)



Application Examples

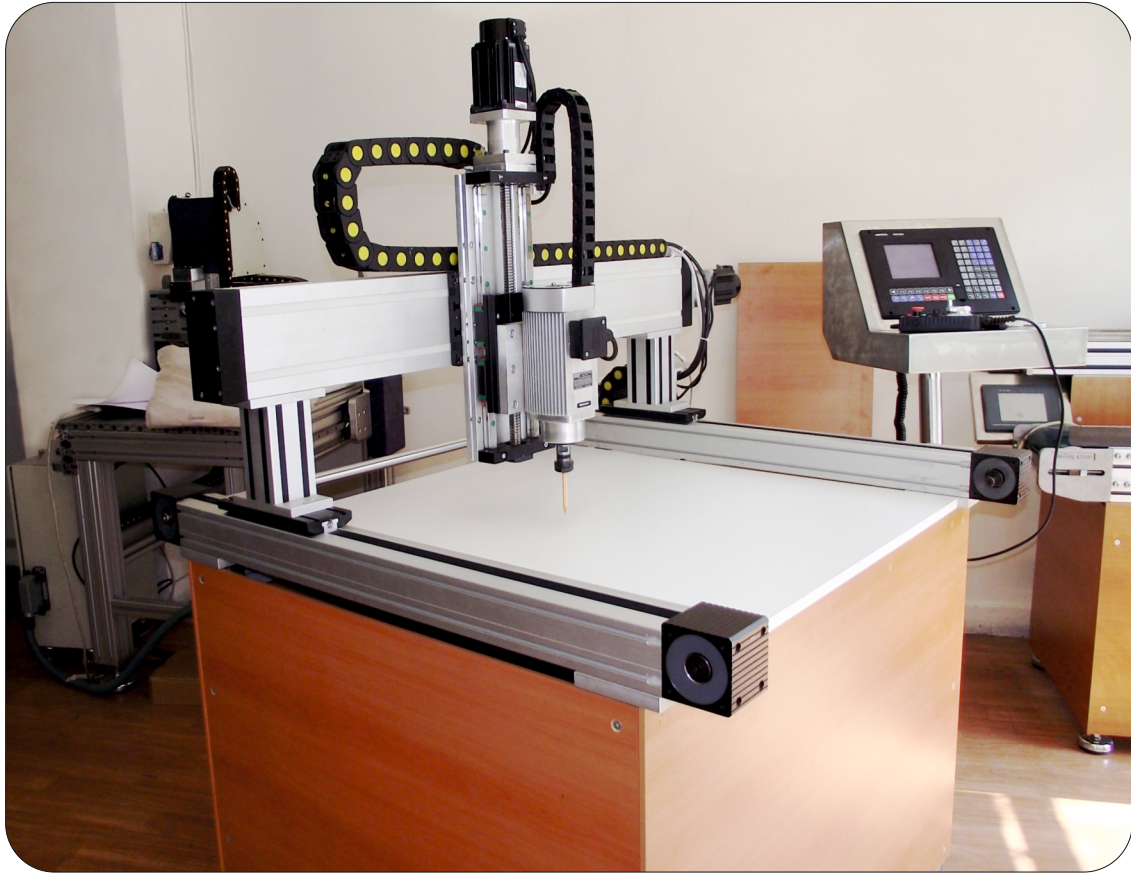


Features / Model	WS 70F	WS 90F	WS 120F	WS 150F	WS 180F
Continuous Torque (kgf*m/Nm)	1/9.8	2/19.6	4.8/47.04	6/58.8	15/147
Max. Tork (kgf*m/Nm)	3/29.4	6/58.8	8/78.4	10/98	25/245
Breaking Point (kgf*m/Nm)	5/49	10/98	20/196	30/294	50/490
Permissible entrance turnover (r/min)	1200	1000	800	800	500
Backlash (arc-min)	0	0	0	0	0
Inaction (kg*cm ²)	0.05	0.23	0.8	1.72	2.12
Max. Loading (kgf)	86	140	250	350	550
Weight (kg)	1.2	3.4	7.4	13	41
Weight (kg)	2.1	5.7	12.5	17	52.1
Weight L2 (kg)	2.4	6.8	14.3	17.8	52.8



ΚΩΔΙΚΟΣ	MODULE	PRODUCT NAME	A	B	Bd	ØC	ØDm	ØE	Ed	L1	L2	F	G	H	Hd	k1	k2	M	Αğıρlık (kg)	TIMH
WS70+GNP60	WS70+GNP60	90°Direction Changer Reducers	70	42,43	4 x M5	60	42	75	4 x M5	35	107	50	14	49,5	4 x M5	54	39	16	2,1	
WS70+GNP60	WS70+GNP60	90°Direction Changer Reducers	70	42,43	4 x M5	60	42	75	4 x M5	35	107	50	14	49,5	4 x M5	54	39	16	2,1	
WS90+GNP90	WS90+GNP90	90°Direction Changer Reducers	92	53	4 x M6	80	46	74,25	4 x M6	46	138	70	19	63,64	4 x M6	75	50,5	26	5,7	
WS90+GNP90	WS90+GNP90	90°Direction Changer Reducers	92	53	4 x M6	80	46	74,25	4 x M6	46	173	70	19	63,64	4 x M6	75	50,5	26	6,8	

Gantry Systems

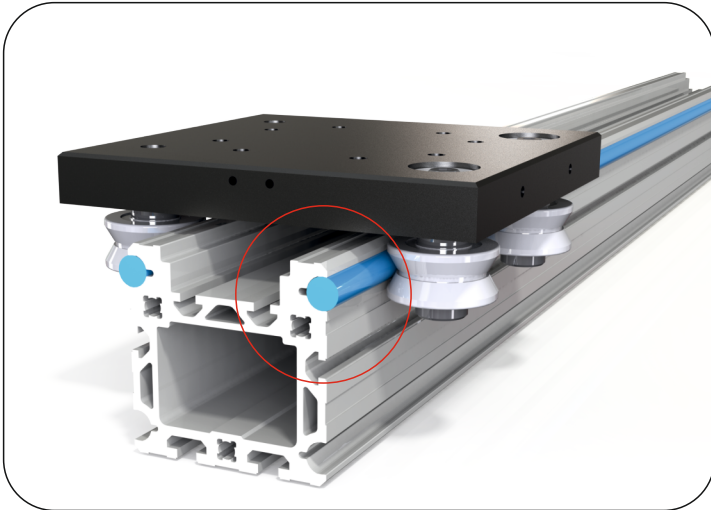


Cartesian Robot



INNOVATIONS OUR MODULAR SYSTEM

Unquoted Modular System



- 38X50 Roller Timing Module
- 60x80 Roller Timing Module
- 80x80 Roller Timing Module
- 80x80 Roller Tunnel Module
- 80x80 Kremayerli Modül
- 38x50 Rack Module
- 60x80 Rack Module
- 80x80 Rack Module

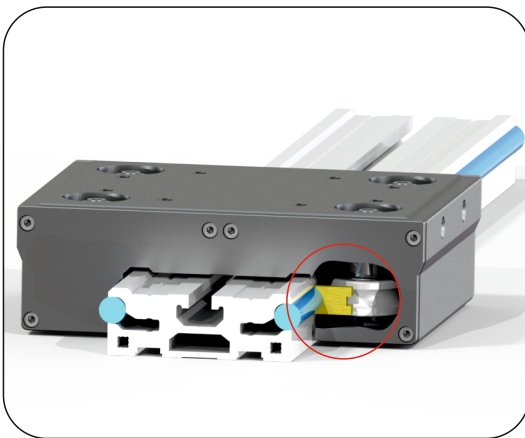
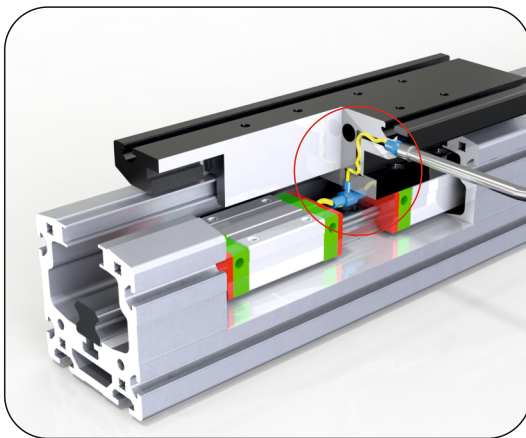
**HIGH
STRENGTH**

Quotes module series provides high-silent operation

Extra Lubrication Features

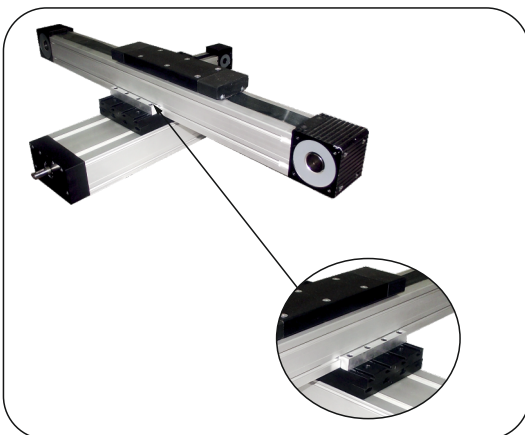
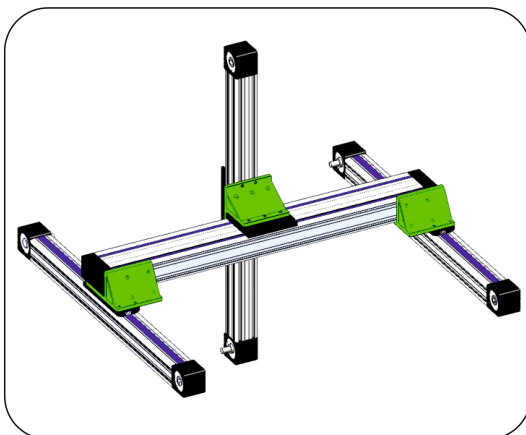
**LONG
WORK
LIFE**

- 64x64 Compact
- 80x80 Compact
- 50x110 Compact
- 65x145 Compact
- 80x160 Compact
- 100x100 Compact

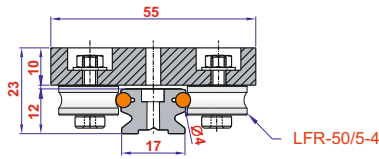


- Ø6 Block Bearing
- Ø8 Block Bearing
- Ø12 Block Bearing
- Ø20 Block Bearing
- 45x90 Module
- 90x90 Module

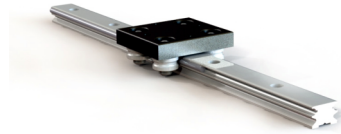
Module Connection Options



Block Guidance Ø4

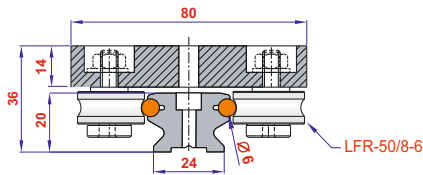


BLOCK (OPEN TYPE)



ΚΩΔΙΚΟΣ	SPARE PARTS		TIMH
107-50/5-4	GUIDANCE (WITH Ø4 SHAFT)	1 μέτρο	
BLOCK Φ4	BLOCK(4 BALLBEARINGS)	1 τεμάχιο	

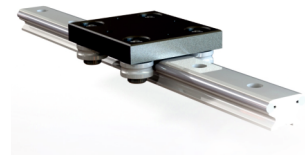
Block Guidance Ø6



**PROTECTIVE GUARD
LUBRICATING PROPERTY
(CLOSED TYPE)**

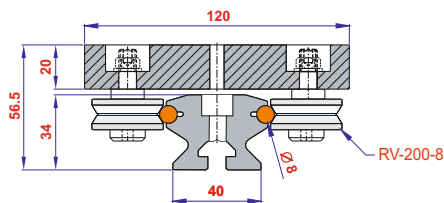


BLOCK (OPEN TYPE)

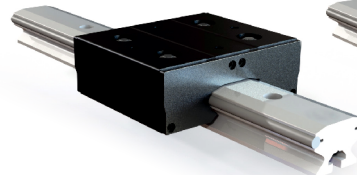


ΚΩΔΙΚΟΣ	SPARE PARTS		TIMH
108-50/8-6	GUIDANCE (Ø6 WITH BALLBEARINGS)	1 μέτρο	
BLOCK Φ6 closed	BLOCK WITH 4 BALLBEARINGS (GUARDED /OILED)	1 τεμάχιο	
BLOCK Φ6	BLOCK(WITH 4 BALLBEARINGS)	1 τεμάχιο	

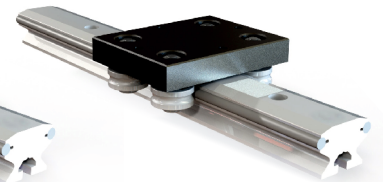
Block Guidance Ø8



**PROTECTIVE GUARD
LUBRICATING PROPERTY
(CLOSED TYPE)**



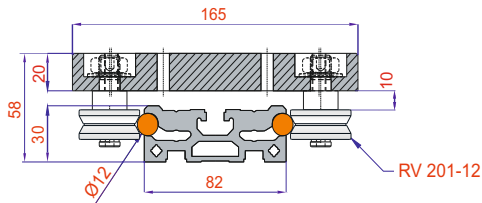
BLOCK (OPEN TYPE)



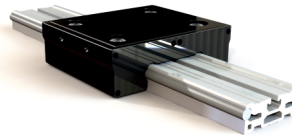
ΚΩΔΙΚΟΣ	SPARE PARTS		TIMH
109-5200-8	GUIDANCE (Ø8 WITH BALLBEARINGS)	1 μέτρο	
BLOCK Φ8 closed	BLOCK WITH 4 BALLBEARINGS (GUARDED /OILED)	1 τεμάχιο	
BLOCK Φ8	BLOCK(WITH 4 BALLBEARINGS)	1 τεμάχιο	

Lubrication protective shield protects against environmental factors with and extends the operating life of 70%.

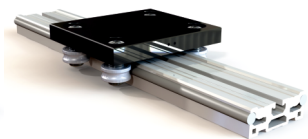
Block Guidance Ø12



PROTECTIVE GUARD
LUBRICATING PROPERTY
(CLOSED TYPE)

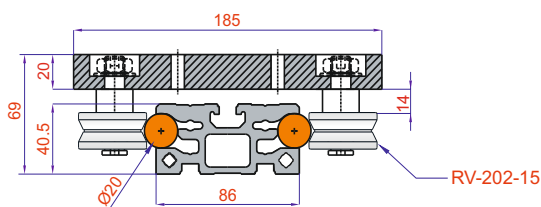


BLOCK (OPEN TYPE)

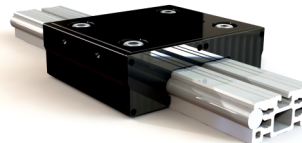


ΚΩΔΙΚΟΣ	SPARE PARTS		ΤΙΜΗ
110-5201	GUIDANCE (Ø12 WITH BALLBEARINGS)	1 μέτρο	
BLOCK Φ12 closed	BLOCK WITH 4 BALLBEARINGS (GUARDED /OILED)	1 τεμάχιο	
BLOCK Φ12	BLOCK(WITH 4 BALLBEARINGS)	1 τεμάχιο	

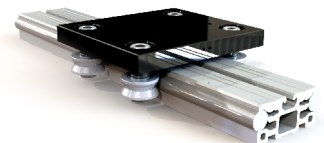
Block Guidance Ø20



PROTECTIVE GUARD
LUBRICATING PROPERTY
(CLOSED TYPE)



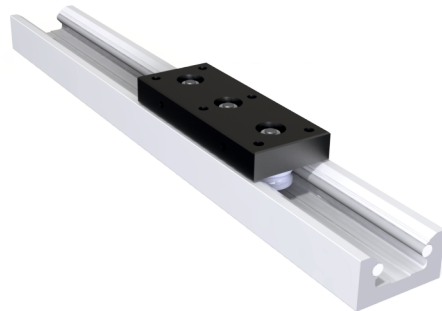
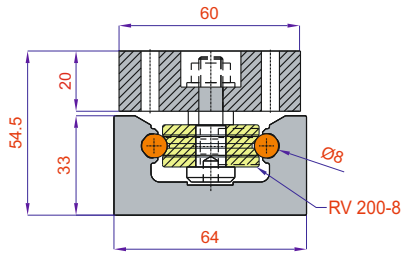
BLOCK (OPEN TYPE)



ΚΩΔΙΚΟΣ	SPARE PARTS		ΤΙΜΗ
115-202	GUIDANCE (Ø20 WITH BALLBEARINGS)	1 μέτρο	
BLOCK Φ20 closed	BLOCK WITH 4 BALLBEARINGS (GUARDED /OILED)	1 τεμάχιο	
BLOCK Φ20	BLOCK(WITH 4 BALLBEARINGS)	1 τεμάχιο	

Lubrication protective shield protects against environmental factors with and extends the operating life of 70%.

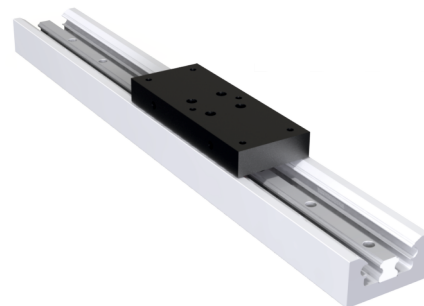
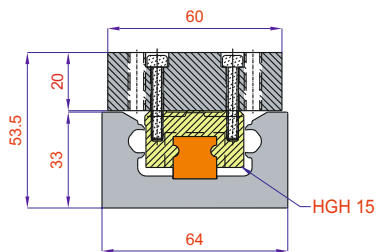
Closed Block Guidance Ø8



ΚΩΔΙΚΟΣ	SPARE PARTS		TIMH
112-5200	GUIDANCE (WITH Ø8 SHAFT)	1 μέτρο	
112-5200 BL	15X100MM. BLOWER	1 μέτρο	
BLOCK Φ8-3 closed	BLOCK WITH 3 BALLBEARINGS (GUARDED /OILED)	1 τεμάχιο	
BLOCK Φ8-3 ball	BLOCK(WITH 3 BALLBEARINGS)	1 τεμάχιο	
BLOCK Φ8-4 closed	BLOCK WITH 4 BALLBEARINGS (GUARDED /OILED)	1 τεμάχιο	
BLOCK Φ8-4 ball	BLOCK(WITH 4 BALLBEARINGS)	1 τεμάχιο	

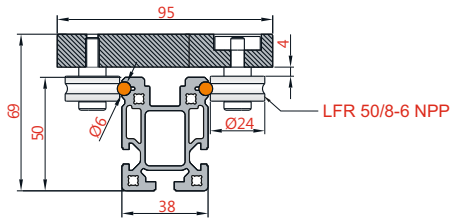
Lubrication protective shield protects against environmental factors with and extends the operating life of 70%

Closed Block Guidance 15



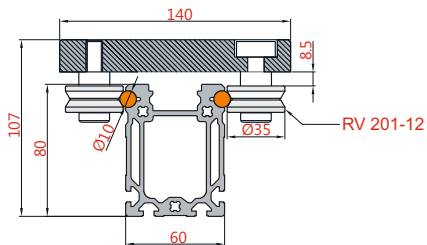
ΚΩΔΙΚΟΣ	SPARE PARTS		TIMH
111-LNR	GUIDANCE (WITH LINEAR RAIL)	1 μέτρο	
BLOCK Φ15 linear	BLOCK (LINEAR BLOCK)	1 τεμάχιο	
111-LNR/BL	15X100MM. BLOWER	1 μέτρο	

Profile Guidance 38x50



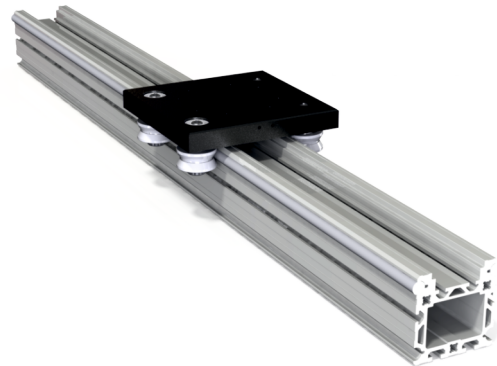
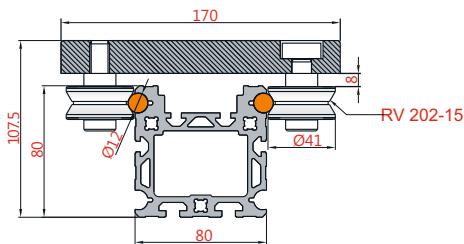
ΚΩΔΙΚΟΣ	SPAREPARTS		ΤΙΜΗ
PG 38x50	GUIDANCE (WITH Ø6 SHAFT)	1 μέτρο	
PG BLOCK Φ6	BLOCK(WITH 4 BALLBEARINGS)	1 τεμάχιο	

Profile Guidance 60x80



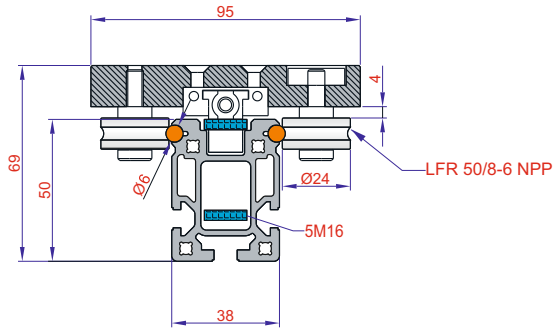
ΚΩΔΙΚΟΣ	SPAREPARTS		ΤΙΜΗ
PG 60x80	GUIDANCE (WITH Ø10 SHAFT)	1 μέτρο	
PG BLOCK Φ10	BLOCK(WITH 4 BALLBEARINGS)	1 τεμάχιο	

Profile Guidance 80x80



ΚΩΔΙΚΟΣ	SPAREPARTS		ΤΙΜΗ
PG 80x80	GUIDANCE (WITH Ø12 SHAFT)	1 μέτρο	
PG BLOCK Φ12	BLOCK(WITH 4 BALLBEARINGS)	1 τεμάχιο	

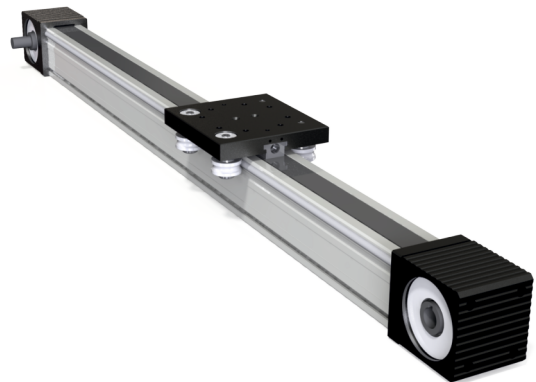
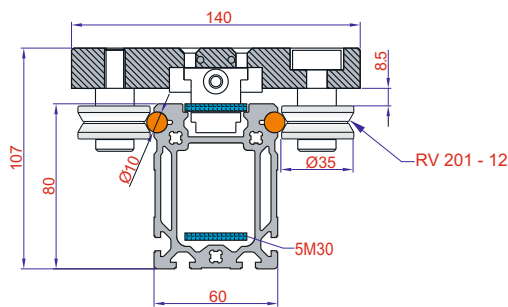
Timing Belt Module 38x50



ΚΑΘΑΡΗ ΔΙΑΔΡΟΜΗ	TIMH
500 mm	
1000 mm	
2000 mm	
3000 mm	

SPARE PARTS		TIMH
Guidance (with Ø6 Shaft)	1 μέτρο	
Block(with 4 Ballbearings)	1 τεμάχιο	
Timing Head 38x50	1 σετ	
G60 Flange+gs14 Coupling Mounting	1 τεμάχιο	
G80 Flange+gs19 Coupling Mounting	1 τεμάχιο	

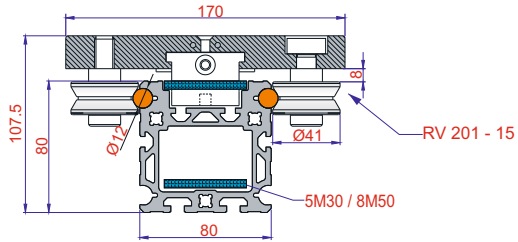
Timing Belt Module 60x80



ΚΑΘΑΡΗ ΔΙΑΔΡΟΜΗ	TIMH
500 mm	
1000 mm	
2000 mm	
3000 mm	
4000 mm	
5000 mm	
5850 mm	

SPARE PARTS		TIMH
Guidance (with Ø10 Shaft)	1 μέτρο	
Block(with 4 Ballbearings)	1 τεμάχιο	
Timing Head 80x80	1 σετ	
G85 Flange+gs19 Coupling Mounting	1 τεμάχιο	
G95 Flange+gs19 Coupling Mounting	1 τεμάχιο	

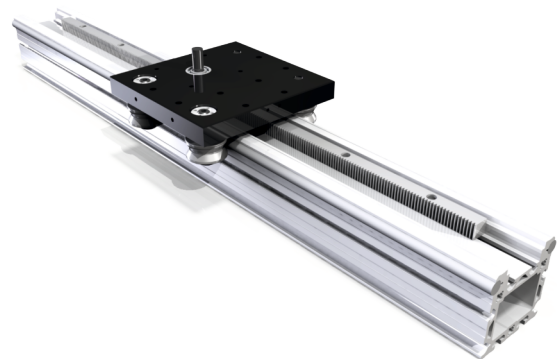
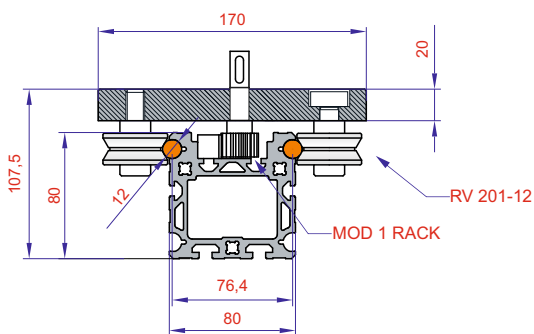
Timing Belt Module 80x80



ΚΑΘΑΡΗ ΔΙΑΔΡΟΜΗ	TIMH	
	5M30 BELT	8M50 BELT
500 mm		
1000 mm		
2000 mm		
3000 mm		
4000 mm		
5000 mm		
5800 mm		

SPARE PARTS		TIMH
Guidance (with Ø12 Shaft)	1 μέτρο	
Block(with 4 Ballbearings) (5m30 Type)	1 τεμάχιο	
Block(with 4 Ballbearings) (8m50 Type)	1 τεμάχιο	
Timing Head 80x80	1 σετ	
Timing Head 100x100	1 σετ	
G80 Flange+gs19 Coupling Mounting	1 τεμάχιο	
G85 Flange+gs19 Coupling Mounting	1 τεμάχιο	

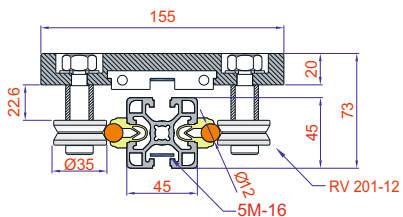
Rack and Pinion Module 80x80



ΚΑΘΑΡΗ ΔΙΑΔΡΟΜΗ	TIMH
1000 mm	
2000 mm	
3000 mm	
4000 mm	
5000 mm	
5800 mm	

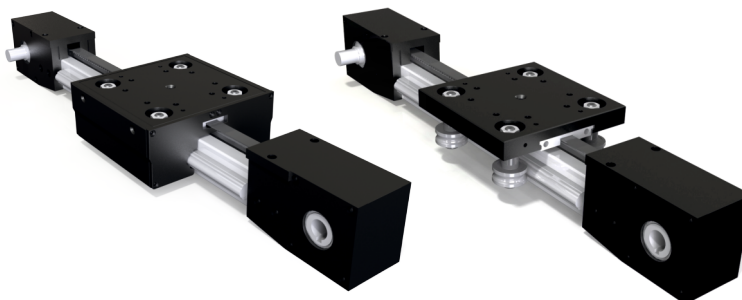
SPARE PARTS		TIMH
Guidance (with Ø12 Shaft)	1 μέτρο	
Block(with 4 Ballbearings)	1 τεμάχιο	
G85 Flange+gs19 Coupling Mounting	1 τεμάχιο	
G95 Flange+gs19 Coupling Mounting	1 τεμάχιο	

Timing Belt Module 45x45



**PROTECTIVE GUARD
LUBRICATING PROPERTY**

BLOCK (OPEN TYPE)

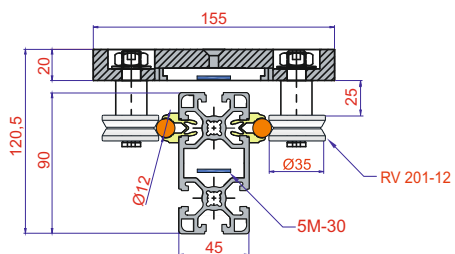


ΚΑΘΑΡΗ ΔΙΑΔΡΟΜΗ	TIMH
500 mm	
1000 mm	
2000 mm	
3000 mm	

SPARE PARTS		TIMH
Guidance (with Ø12 Shaft)	1 μέτρο	
Block(with 4 Ballbearings)	1 τεμάχιο	
Block With 4 Ballbearings (guarded /oiled)	1 τεμάχιο	
Timing Head 83x67	1 σετ	
G80 Flange+gs19 Coupling Mounting	1 τεμάχιο	
G85 Flange+gs19 Coupling Mounting	1 τεμάχιο	

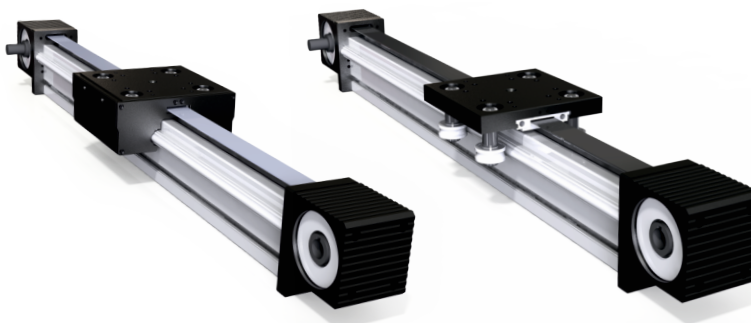
* Please use the following formula for price calculation regarding to your stroke.

Timing Belt module 45x90



**PROTECTIVE GUARD
LUBRICATING PROPERTY**

BLOCK (OPEN TYPE)

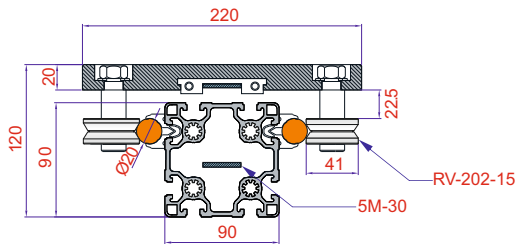


ΚΑΘΑΡΗ ΔΙΑΔΡΟΜΗ	TIMH
500 mm	
1000 mm	
2000 mm	
3000 mm	
4000 mm	
5000 mm	
5830 mm	

SPARE PARTS		TIMH
Guidance (with Ø12 Shaft)	1 μέτρο	
Block(with 4 Ballbearings)	1 τεμάχιο	
Block With 4 Ballbearings (guarded /oiled)	1 τεμάχιο	
Timing Head 83x67	1 σετ	
G80 Flange+gs19 Coupling Mounting	1 τεμάχιο	
G85 Flange+gs19 Coupling Mounting	1 τεμάχιο	

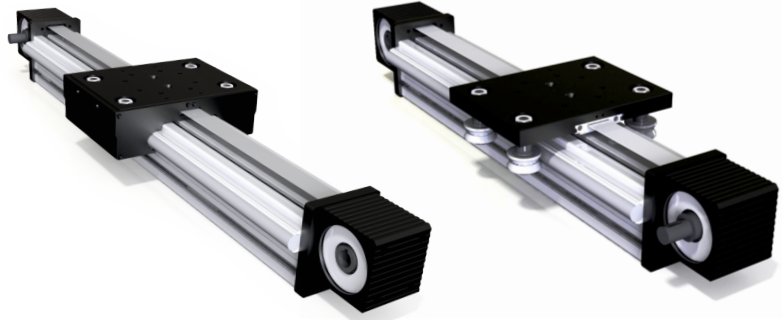
Lubrication protective shield protects against environmental factors with and extends the operating life of 70%.

Timing Belt Module 90x90



PROTECTIVE GUARD
LUBRICATING PROPERTY

BLOCK (OPEN TYPE)

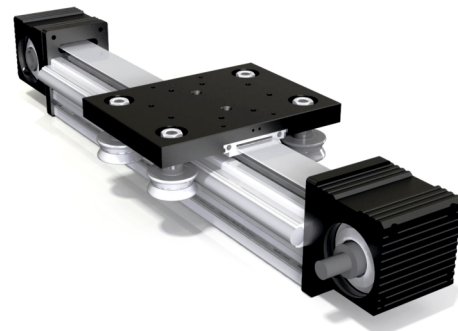
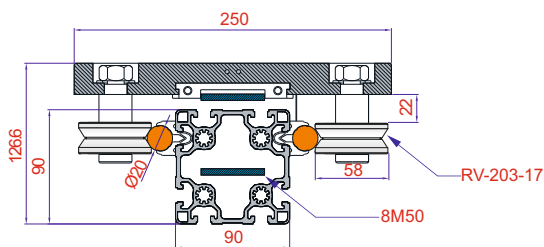


BELT 5M30	TIMH
ΚΑΘΑΡΗ ΔΙΑΔΡΟΜΗ	RV 202
500 mm	
1000 mm	
2000 mm	
3000 mm	
4000 mm	
5000 mm	
5820 mm	

SPARE PARTS		TIMH
Guidance (with Ø20 Shaft)	1 μέτρο	
Block(with 4 Ballbearings)	1 τεμάχιο	
Block With 4 Ballbearings (guarded /oiled)	1 τεμάχιο	
Timing Head 80x80 (30 Straps)	1 σετ	
G95 Flanş + Gs19 Kaplin Akuplesi	1 τεμάχιο	
G95 Flanş + Gs24 Kaplin Akuplesi	1 τεμάχιο	

Lubrication protective shield protects against environmental factors with and extends the operating life of 70%.

Timing Belt Module 90x90

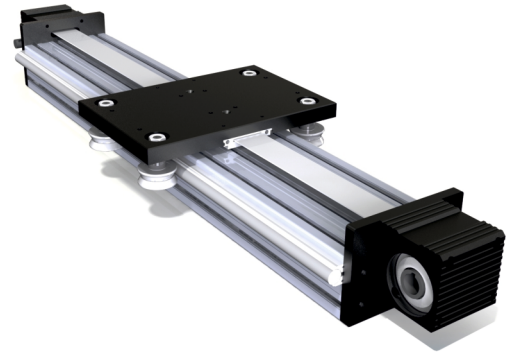
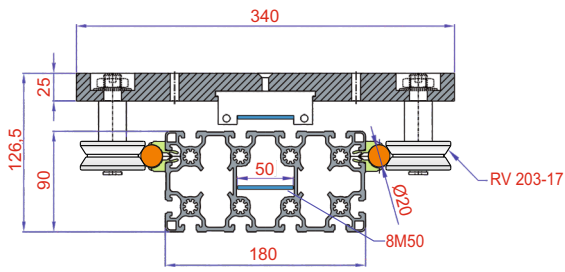


BELT 8M50	TIMH
ΚΑΘΑΡΗ ΔΙΑΔΡΟΜΗ	RV 203
500 mm	
1000 mm	
2000 mm	
3000 mm	
4000 mm	
5000 mm	
5880 mm	

SPARE PARTS		TIMH
Guidance (with Ø20 Shaft)	1 μέτρο	
Block(with 4 Ballbearings)	1 τεμάχιο	
Timing Head 100x100 (50 Straps)	1 σετ	
G95 Flange+gs19 Coupling Mounting	1 τεμάχιο	
G95 Flange+gs24 Coupling Mounting	1 τεμάχιο	

* Prices based on OPEN BLOCK.

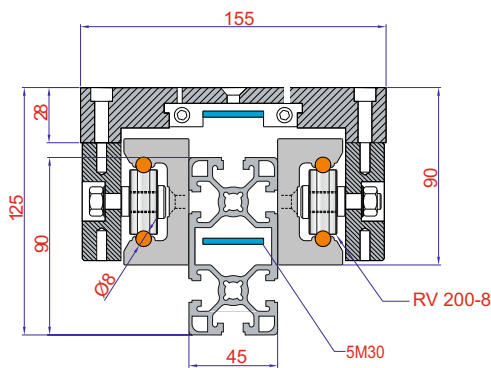
Timing Belt Module 90x180



ΚΑΘΑΡΗ ΔΙΑΔΡΟΜΗ	TIMH
500 mm	
1000 mm	
2000 mm	
3000 mm	
4000 mm	
5000 mm	
5750 mm	

SPARE PARTS		TIMH
Guidance (Ø20 With Shaft)	1 μέτρο	
Block (4 Bearing)	1 τεμάχιο	
RV 203-17 Bearing	1 τεμάχιο	
Pulley Box 100x100	1 σετ	
G120 Flange + GS19 Coupling mounting	1 τεμάχιο	
G120 Flange + GS24 Coupling mounting	1 τεμάχιο	
20x200 mm Bellows	1 μέτρο	

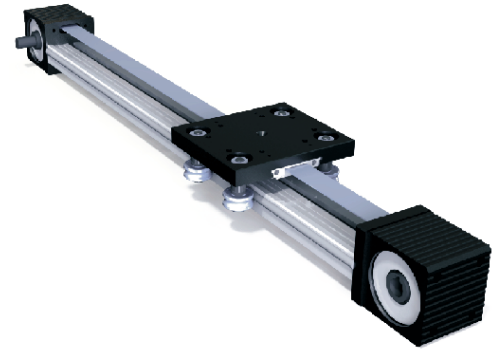
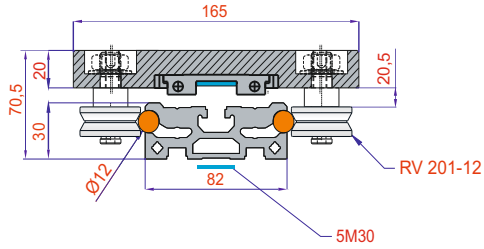
Timing Belt Module 45x90



ΚΑΘΑΡΗ ΔΙΑΔΡΟΜΗ	TIMH
500 mm	6 BEARING
1000 mm	
2000 mm	
3000 mm	
4000 mm	
5000 mm	
5850 mm	

SPARE PARTS		TIMH
Guidance Ø8 With Shaft	1 μέτρο	
RV 200-8 Bearing	1 τεμάχιο	
Pulley Box 80x80	1 σετ	
G85 Flange + GS19 Coupling mounting	1 τεμάχιο	
Block (Open Type) 200 6 Bearing	1 τεμάχιο	

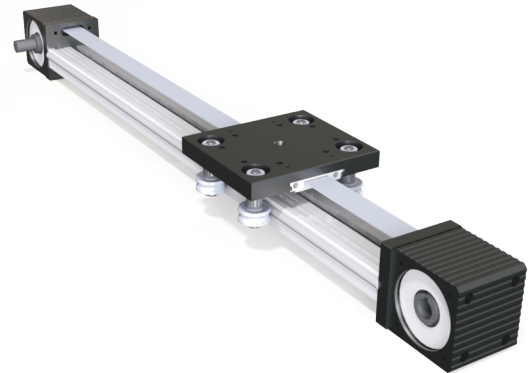
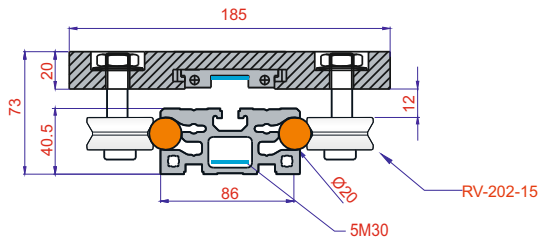
Timing Belt Block Module Ø12



ΚΑΘΑΡΗ ΔΙΑΔΡΟΜΗ	TIMH
500 mm	
1000 mm	
2000 mm	
3000 mm	
4000 mm	
5000 mm	
5800 mm	

SPARE PARTS		TIMH
Guidance (Ø12 With Shaft)	1 μέτρο	
Block (4 Bearing) RV 201	1 τεμάχιο	
RV 201-12 Bearing	1 τεμάχιο	
Pulley Box 80x80	1 τεμάχιο	
G80 Flange + GS19 Coupling mounting	1 τεμάχιο	

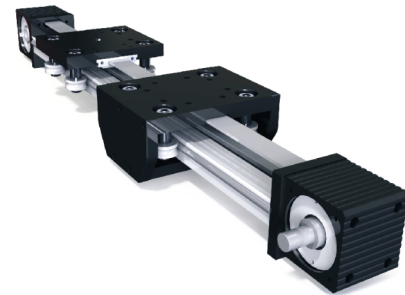
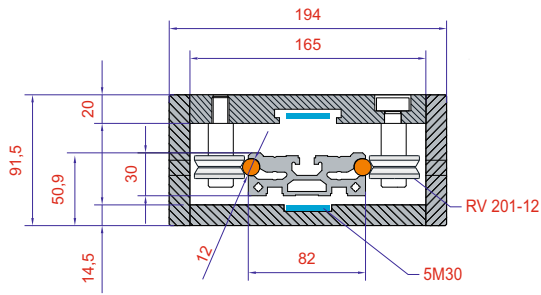
Timing Belt Block Module Ø20



ΚΑΘΑΡΗ ΔΙΑΔΡΟΜΗ	TIMH
500 mm	
1000 mm	
2000 mm	
3000 mm	
4000 mm	
5000 mm	
5800 mm	

SPARE PARTS		TIMH
Guidance (Ø20 MILLI)	1 μέτρο	
Block (4 Bearing) RV202	1 τεμάχιο	
RV 202-15 Bearing Set	1 τεμάχιο	
Pulley Box 100x100	1 σετ	
G95 Flange + GS19 Coupling mounting	1 τεμάχιο	

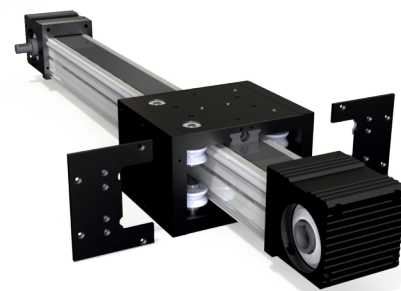
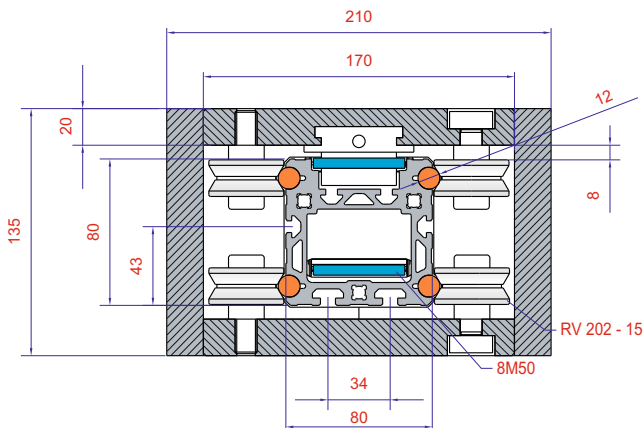
Timing Belt Block Module Ø12 (Opposite Directions)



ΚΑΘΑΡΗ ΔΙΑΔΡΟΜΗ	TIMH
1000 mm	
2000 mm	
3000 mm	
4000 mm	
5000 mm	
5700 mm	

SPARE PARTS		TIMH
Guidance Ø12 With Shaft	1 μέτρο	
Guarded Block (4 Bearing)	1 σετ	
Standart Block (4 Bearing)	1 τεμάχιο	
RV 201-12 Bearing Set	1 τεμάχιο	
Pulley Box 80x80	1 τεμάχιο	
G80 Flange + GS19 Coupling mounting	1 τεμάχιο	

Timing Belt Tunnel Module 80x80

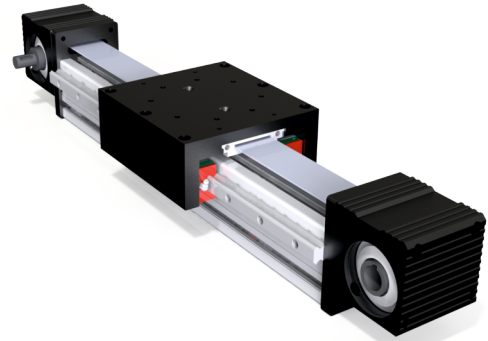
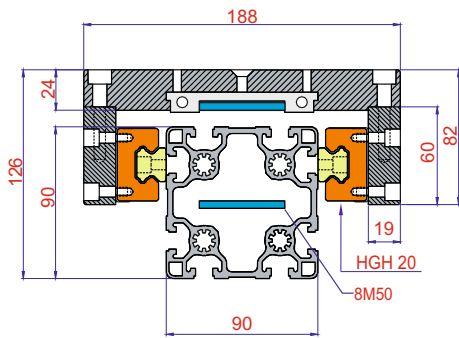


ΚΑΘΑΡΗ ΔΙΑΔΡΟΜΗ	TIMH
1000 mm	
2000 mm	
3000 mm	
4000 mm	
5000 mm	
5800 mm	

SPARE PARTS		TIMH
Guidance Ø12 With Shaft	1 μέτρο	
Block (8 Bearing)	1 σετ	
RV 202-15 Bearing Set - RV 201 Bearing Set	1 τεμάχιο	
Pulley Box 100X100	1 τεμάχιο	
G95 Flange + GS19 Coupling mounting	1 τεμάχιο	
G120 Flange + GS24 Coupling mounting	1 τεμάχιο	

Lubrication protective shield protects against environmental factors with and extends the operating life of 70%.

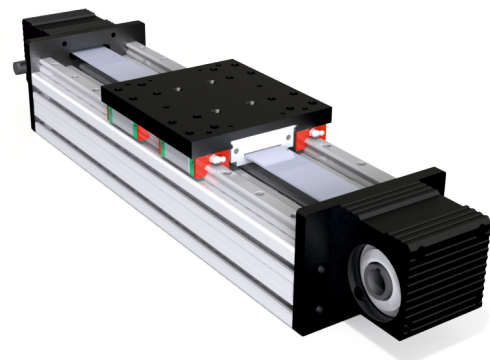
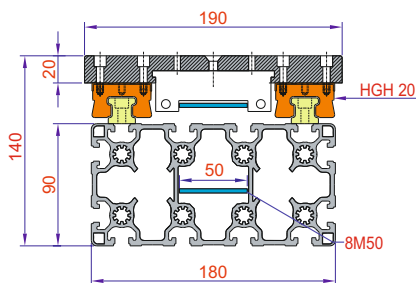
Linear Timing Belt Module 90x90



ΚΑΘΑΡΗ ΔΙΑΔΡΟΜΗ	TIMH
500 mm	
1000 mm	
2000 mm	
3000 mm	
3750 mm	
5000 mm	
5780 mm	

SPARE PARTS		TIMH
Guidance (With Linear Rail)	1 μέτρο	
Block (With Linear Block)	1 τεμάχιο	
Pulley Box 100x100	1 σετ	
G95 Flange + GS19 Coupling mounting	1 τεμάχιο	
G95 Flange + GS24 Coupling mounting	1 τεμάχιο	
20x100 mm Bellows (It had to use bilateral)	1 μέτρο	

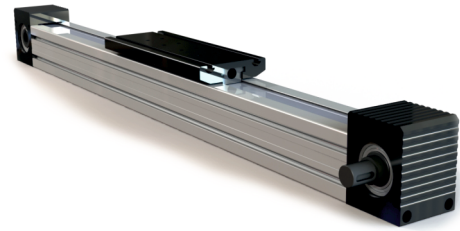
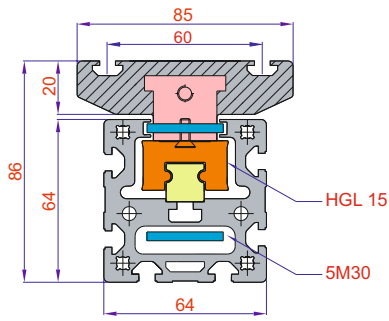
Linear Timing Belt Module 90x180



ΚΑΘΑΡΗ ΔΙΑΔΡΟΜΗ	TIMH
500 mm	
1000 mm	
2000 mm	
3000 mm	
3750 mm	
5000 mm	
5780 mm	

SPARE PARTS		TIMH
Guidance(With Linear Rail)	1 μέτρο	
Plate (4 Block)	1 σετ	
Pulley Box 100x100	1 τεμάχιο	
G120 Flange + GS28 Coupling mounting	1 τεμάχιο	
Spacial Flange + GS24 Coupling mounting	1 τεμάχιο	
20x200 mm Bellows	1 τεμάχιο	

Timing Belt Compact Module 64x64

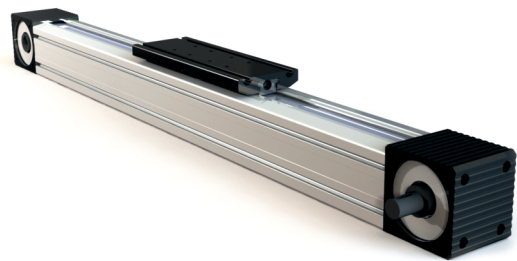
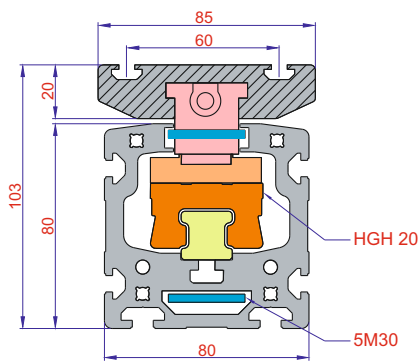


ΚΑΘΑΡΗ ΔΙΑΔΡΟΜΗ	TIMH
500 mm	
1000 mm	
2000 mm	
3000 mm	
3750 mm	
5000 mm	
5750 mm	

SPARE PARTS		TIMH
Pulley Box 64x64	1 σετ	
G60 Flange + GS14 Coupling mounting	1 τεμάχιο	
G80 Flange + GS19 Coupling mounting	1 τεμάχιο	

NOTE: Prices are given according to single block. There will be added 56 € in list price for double blocked plate.

Timing Belt Compact Module 80x80

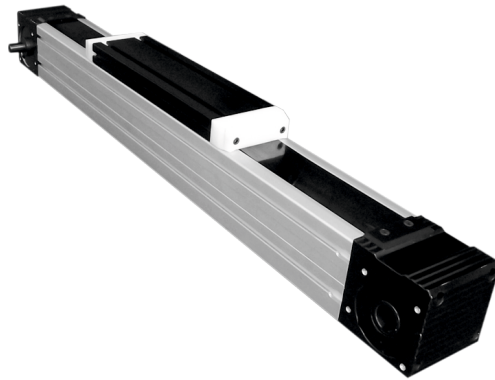
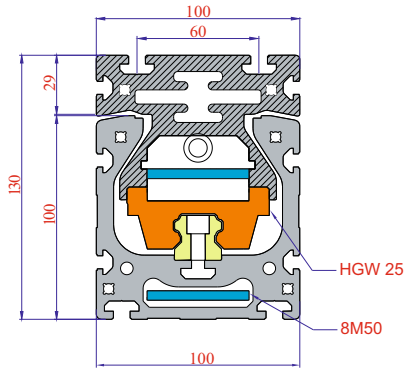


ΚΑΘΑΡΗ ΔΙΑΔΡΟΜΗ	TIMH
500 mm	
1000 mm	
2000 mm	
3000 mm	
3750 mm	
5000 mm	
5750 mm	

SPARE PARTS		TIMH
Pulley Box 80x80	1 σετ	
G85 Flange + GS19 Coupling mounting	1 τεμάχιο	
G95 Flange + GS19 Coupling mounting	1 τεμάχιο	

NOTE: Prices are given according to single block. There will be added 60 € in list price for double blocked plate.

Timing Belt Compact Module 100x100

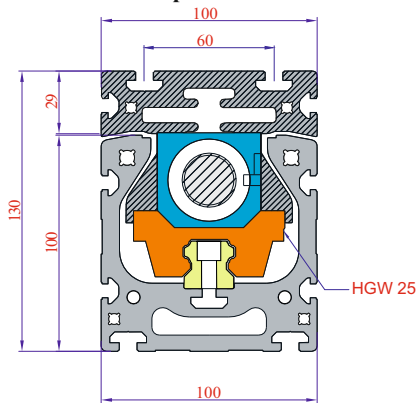


ΚΑΘΑΡΗ ΔΙΑΔΡΟΜΗ	TIMH
500 MM	
1000 MM	
2000 MM	
3000 MM	
3750 MM	
5000 MM	
6000 MM	
7000 MM	
7750 MM	

SPARE PARTS		TIMH
Pulley Box 100x100	1 σετ	
G95 Flange + GS19 Coupling mounting	1 τεμάχιο	
G120 Flange + GS24 Coupling mounting	1 τεμάχιο	

NOTE: Prices are given according to single block. There will be added 70 € in list price for double blocked plate.

Ballscrew Compact Module 100x100

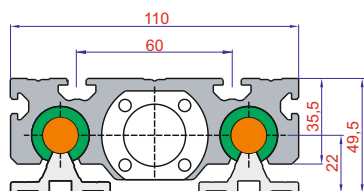


ΚΑΘΑΡΗ ΔΙΑΔΡΟΜΗ	TIMH	TIMH	TIMH
500 mm	Ballscrew Pitch (25-05 mm)	Ballscrew Pitch (25-10 mm)	Ballscrew Pitch (20-20 mm)
1000 mm			
2000 mm			
3000 mm			
3800 mm			

SPARE PARTS		TIMH
G95 Flange + GS19 Coupling mounting	1 τεμάχιο	
G120 Flange + GS24 Coupling mounting	1 τεμάχιο	

NOTE: Prices are given according to single block.

DKVM Ballscrew Module Ø12

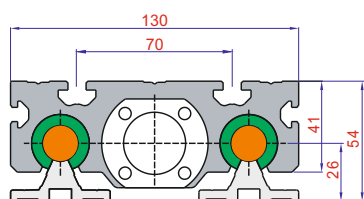


ΚΑΘΑΡΗ ΔΙΑΔΡΟΜΗ	TIMH
500 mm	Ø12-05 Pitch
1000 mm	
2000 mm	

SPARE PARTS		TIMH
Ø12 Shaft Support Profile+Shaft Mounted	1 μέτρο	
20x200 mm Bellows	1 μέτρο	
Plate (Self-lubricating)	1 τεμάχιο	
Plate (12 UUOP Bearing)	1 τεμάχιο	

* Prices are given according to block with linear bearing.

DKVM Ballscrew Module Ø16

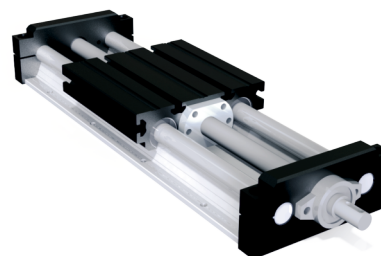
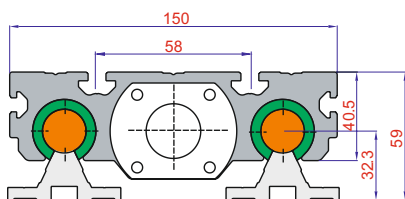


ΚΑΘΑΡΗ ΔΙΑΔΡΟΜΗ	TIMH	TIMH	TIMH
500 mm	Ballscrew Pitch (16-05 mm)	Ballscrew Pitch (16-04 mm)	Ballscrew Pitch (16-16 mm)
1000 mm			
2000 mm			

SPARE PARTS		TIMH
Ø16 Shaft Support Profile+Shaft Mounted	1 μέτρο	
20x200 mm Bellows	1 μέτρο	
Plate (Self-lubricating)	1 τεμάχιο	
Plate (16 UUOP Bearing)	1 τεμάχιο	

* Prices are given according to block with linear bearing .

DKVM Ballscrew Module Ø20

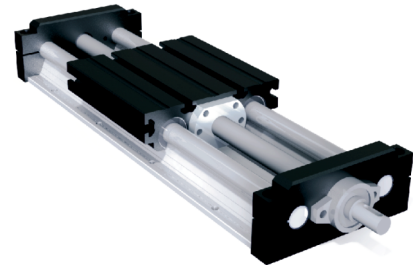
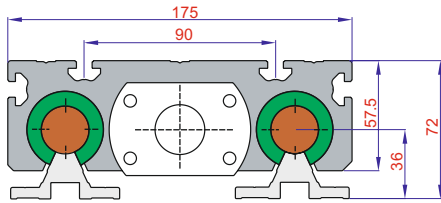


ΚΑΘΑΡΗ ΔΙΑΔΡΟΜΗ	TIMH	TIMH	TIMH
500 mm	Ballscrew Pitch (20-05 mm)	Ballscrew Pitch (20-04 mm)	Ballscrew Pitch (20-20 mm)
1000 mm			
2000 mm			
3000 mm			

SPARE PARTS		TIMH
Ø20 Shaft Support Profile+Shaft Mounted	1 μέτρο	
20x200 mm Bellows	1 μέτρο	
Plate (Self-lubricating)	1 τεμάχιο	
Plate (20 UUOP Bearing)	1 τεμάχιο	

* Prices are given according to block with linear bearing.

DKVM Ballscrew Module Ø25

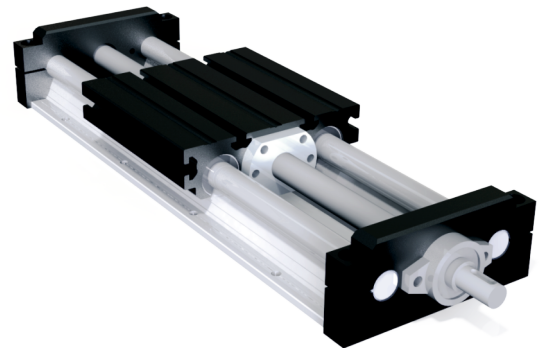
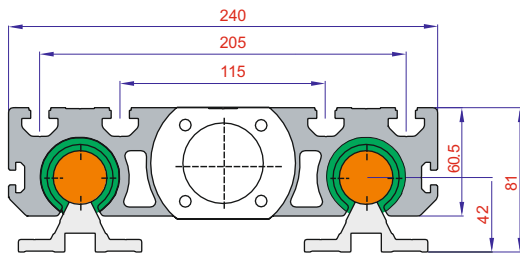


	TIMH	TIMH	TIMH
ΚΑΘΑΡΗ ΔΙΑΔΡΟΜΗ	Ballscrew Pitch (25-05 mm)	Ballscrew Pitch (25-10 mm)	Ballscrew Pitch (25-25 mm)
500 mm			
1000 mm			
2000 mm			
3000 mm			
3700 mm			

SPARE PARTS		TIMH
Ø25 Shaft Support Profile+Shaft Mounted	1 μέτρο	
G95 Flange + GS19 Coupling mounting	1 τεμάχιο	
25x200 mm Bellows	1 μέτρο	
Plate (Self-lubricating)	1 τεμάχιο	
Plate (25 UUOP Bearing)	1 τεμάχιο	

* Prices are given according to block with linear bearing .

DKVM Ballscrew Module Ø30

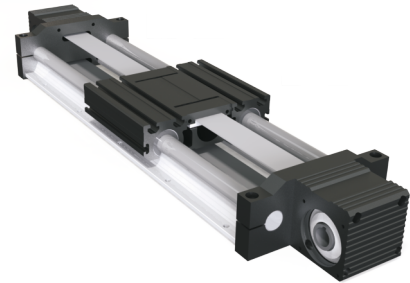
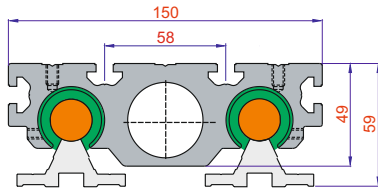


	TIMH	TIMH
ΚΑΘΑΡΗ ΔΙΑΔΡΟΜΗ	Ballscrew Pitch (32-05 mm)	Ballscrew Pitch (32-10 mm)
500 mm		
1000 mm		
2000 mm		
3000 mm		
3630 mm		

SPARE PARTS		TIMH
Ø30 Shaft Support Profile+Shaft Mounted	1 μέτρο	
G95 Flange + GS24 Coupling mounting	1 τεμάχιο	
30x250 mm Bellows	1 τεμάχιο	
Plate (Self-lubricating)	1 τεμάχιο	
Plate (30 UUOP Bearing)	1 τεμάχιο	

* Prices are given according to block with linear bearing.

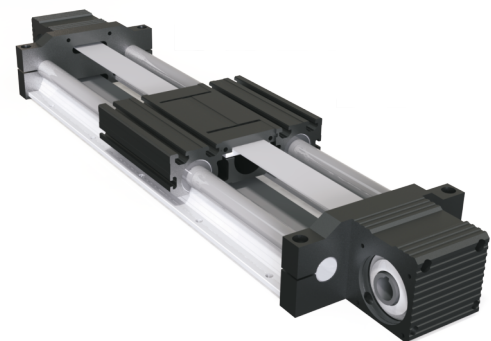
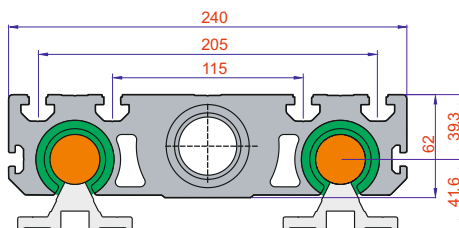
DKTM Timing Belt Module Ø20



ΚΑΘΑΡΗ ΔΙΑΔΡΟΜΗ	TIMH
	LIST (5 mm 30 Belt)
500 mm	
1000 mm	
2000 mm	
3000 mm	
4000 mm	
5000 mm	
5850 mm	

SPARE PARTS		TIMH
Ø20 Shaft Support Profile+Shaft Mounted	1 μέτρο	
Pulley Box 64x64	1 τεμάχιο	
G85 Flange + GS19 Coupling mounting	1 τεμάχιο	
20x200 mm Bellows	1 μέτρο	

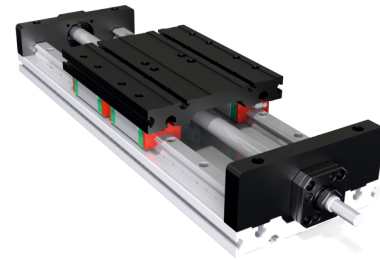
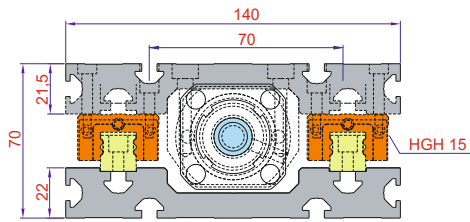
DKTM Timing Belt Module Ø30



ΚΑΘΑΡΗ ΔΙΑΔΡΟΜΗ	TIMH
	LIST (8 mm 50 Belt)
500 mm	
1000 mm	
2000 mm	
3000 mm	
4000 mm	
5000 mm	
5780 mm	

SPARE PARTS		TIMH
Ø30 Shaft Support Profile+Shaft Mounted	1 μέτρο	
Pulley Box 100x100	1 τεμάχιο	
G95 Flange + GS24 Coupling mounting	1 τεμάχιο	
30x200 mm Bellows	1 μέτρο	

Ballscrew Z Axis Module 15

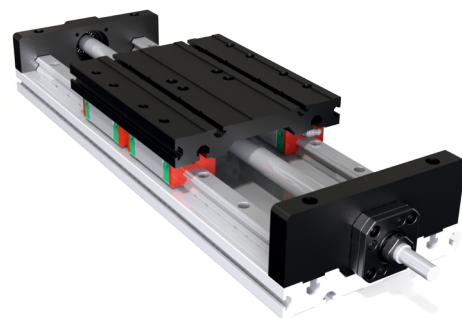
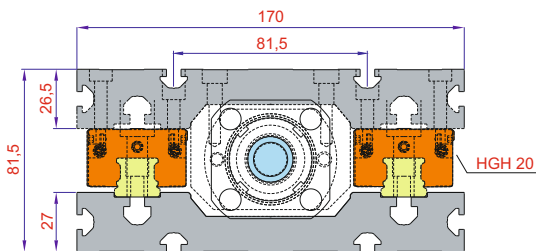


	TIMH	TIMH
ΚΑΘΑΡΗ ΔΙΑΔΡΟΜΗ	Pitch (16-05 mm)	Pitch (16-16 mm)
200 mm		
400 mm		
600 mm		
800 mm		1015,00 €
1000 mm		1090,00 €

SPARE PARTS		TIMH
G60 Flange + GS14 Coupling mounting	1 τεμάχιο	
G80 Flange + GS19 Coupling mounting	1 τεμάχιο	
15x150 mm Bellows	1 μέτρο	

NOT: Prices are given according to module with 4 Linear block. There will be decrease 80 € on list price for double block

Ballscrew Z Axis Module 20

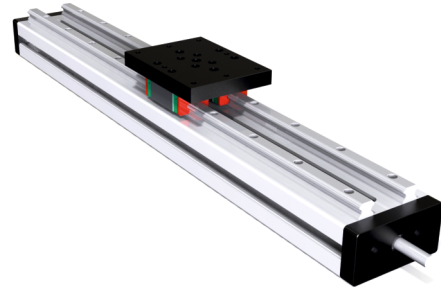
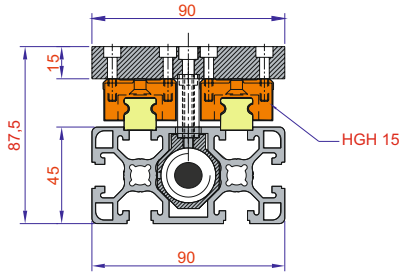


	TIMH	TIMH
ΚΑΘΑΡΗ ΔΙΑΔΡΟΜΗ	Pitch (20-05 mm)	Pitch (20-20 mm)
200 mm		
400 mm		
600 mm		
800 mm		
1000 mm		

SPARE PARTS		TIMH
G85 Flange + GS19 Coupling mounting	1 τεμάχιο	
G95 Flange + GS19 Coupling mounting	1 τεμάχιο	
20x200 mm Bellows	1 μέτρο	

NOT: Prices are given according to module with 4 Linear block. There will be decrease 100 € on list price for double block

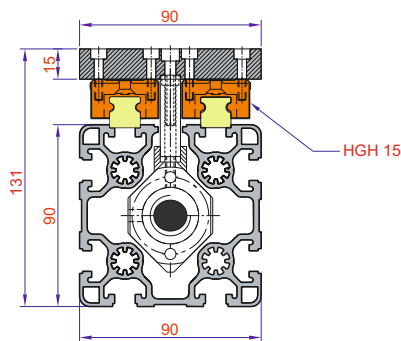
Ballscrew Spot Module 45x90



ΚΑΘΑΡΗ ΔΙΑΔΡΟΜΗ	TIMH
200 mm	Pitch (12-05 mm)
400 mm	
600 mm	
800 mm	
1000 mm	

SPARE PARTS		TIMH
G60 Flange + GS14 Coupling mounting	1 τεμάχιο	
G80 Flange + GS19 Coupling mounting	1 τεμάχιο	
15x100 mm Bellow	1 μέτρο	

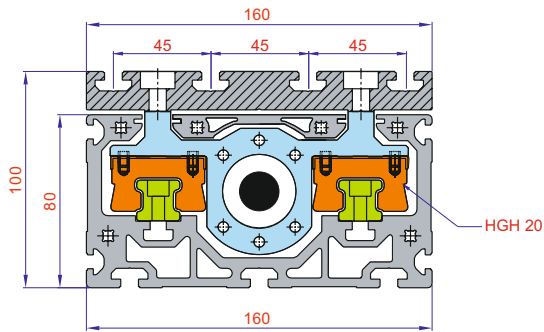
Ballscrew Spot Module 90x90



ΚΑΘΑΡΗ ΔΙΑΔΡΟΜΗ	TIMH
200 mm	Pitch (16-05 mm)
400 mm	
600 mm	
800 mm	
1000 mm	
1200 mm	

SPARE PARTS		TIMH
G80 Flange + GS19 Coupling mounting	1 τεμάχιο	
20x100 mm Bellows	1 μέτρο	

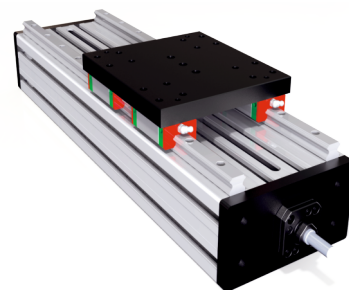
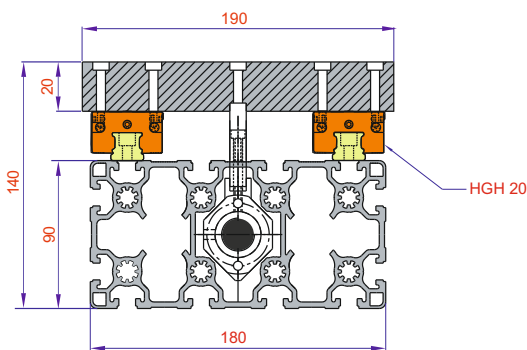
Linear Compact Module 80x160



ΚΑΘΑΡΗ ΔΙΑΔΡΟΜΗ	TIMH	TIMH
500 mm	Pitch (25-10 mm)	Pitch (20-20 mm)
1000 mm		
2000 mm		
3000 mm		
3800 mm		

SPARE PARTS		TIMH
G95 Flange + GS19 Coupling mounting	1 τεμάχιο	
G120 Flange + GS19 Coupling mounting	1 τεμάχιο	

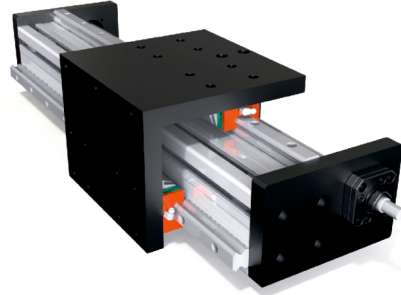
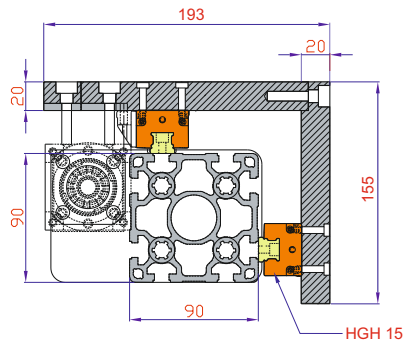
Linear Spot Module 90x180



ΚΑΘΑΡΗ ΔΙΑΔΡΟΜΗ	TIMH
500 mm	Pitch (20-05 mm)
1000 mm	
1500 mm	
2000 mm	
3000 mm	

SPARE PARTS		TIMH
G95 Flange + GS24 Coupling mounting	1 τεμάχιο	
G120 Flange + GS24 Coupling mounting	1 τεμάχιο	
20x200 mm Bellows	1 μέτρο	

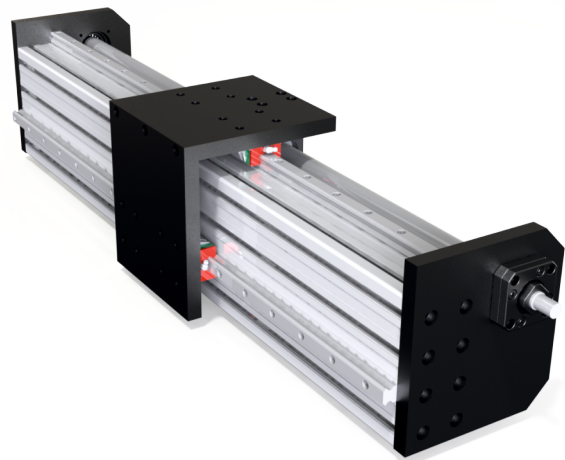
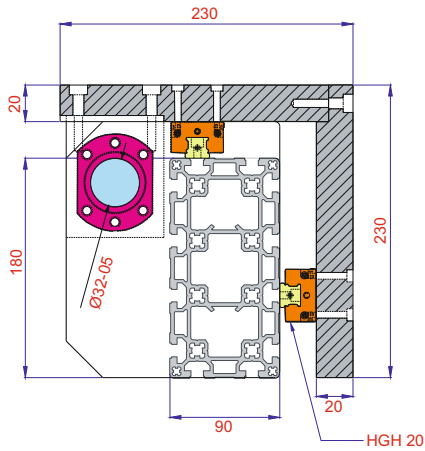
Ballscrew Bridge Module 90x90



ΚΑΘΑΡΗ ΔΙΑΔΡΟΜΗ	TIMH
1000 mm	Pitch (25-10 mm)
2000 mm	
3000 mm	
3800 mm	

SPARE PARTS		TIMH
G95 Flange + GS19 Coupling mounting	1 τεμάχιο	
G95 Flange + GS24 Coupling mounting	1 τεμάχιο	

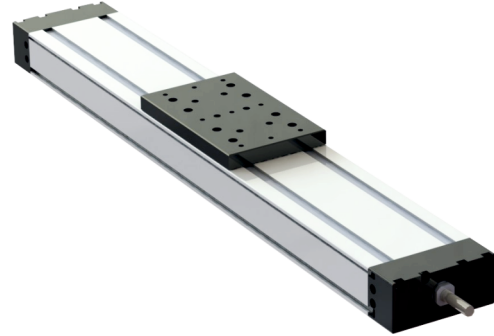
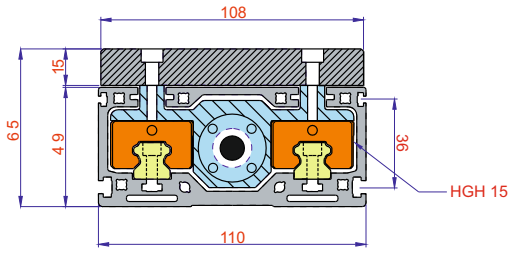
Linear Spot Module 90x180



ΚΑΘΑΡΗ ΔΙΑΔΡΟΜΗ	TIMH	TIMH
1000 mm	Pitch (32-05 mm)	Pitch (32-32 mm)
2000 mm		
3000 mm		
3800 mm		

SPARE PARTS		TIMH
G95 Flange + GS24 Coupling mounting	1 τεμάχιο	
G120 Flange + GS19 Coupling mounting	1 τεμάχιο	

Ballscrew Bridge Module 50x110

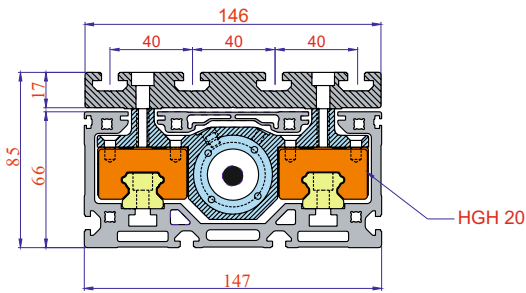


ΚΑΘΑΡΗ ΔΙΑΔΡΟΜΗ	TIMH
500 mm	Pitch (16-05 mm)
1000 mm	
2000 mm	

SPARE PARTS		TIMH
G80 Flange + GS19 Coupling mounting	1 τεμάχιο	
G85 Flange + GS19 Coupling mounting	1 τεμάχιο	

NOTE: Prices are given according to single block.
There will be added 85 € in list price for double blocked plate.

Ballscrew Bridge Module 65x145

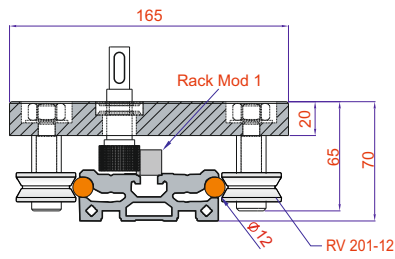


ΚΑΘΑΡΗ ΔΙΑΔΡΟΜΗ	TIMH	TIMH
500 mm	Pitch (25-05 mm)	Pitch (20-20 mm)
1000 mm		
2000 mm		
3000 mm		
3750 mm		

SPARE PARTS		TIMH
G95 Flange + GS19 Coupling mounting	1 τεμάχιο	
G95 Flange + GS24 Coupling mounting	1 τεμάχιο	

NOTE: Prices are given according to single block.
There will be added 85 € in list price for double blocked plate.

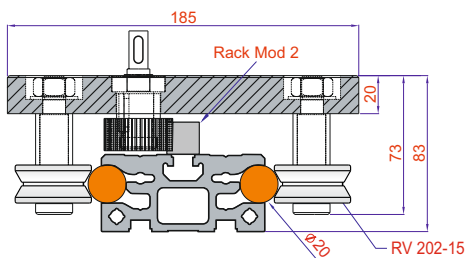
Rack and Pinion Block Module Ø12



ΚΑΘΑΡΗ ΔΙΑΔΡΟΜΗ	TIMH
1000 mm	
2000 mm	
3000 mm	
4000 mm	
5000 mm	
5850 mm	
7000 mm	
7850 mm	

SPARE PARTS		TIMH
Guidance With Ø 12 Shaft	1 μέτρο	
Block (4 Bearing) RV 201-12	1 σετ	
G80 Flange + GS19 Coupling mounting	1 τεμάχιο	

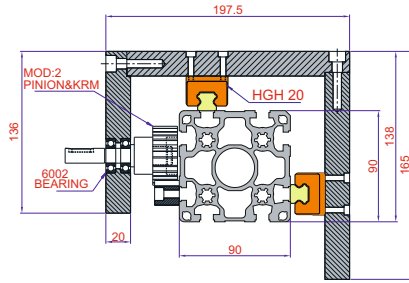
Rack and Pinion Block Module Ø20



ΚΑΘΑΡΗ ΔΙΑΔΡΟΜΗ	TIMH
1000 mm	
2000 mm	
3000 mm	
4000 mm	
5000 mm	
5800 mm	
7000 mm	
7800 mm	

SPARE PARTS		TIMH
Guidance With Ø 20 Shaft	1 μέτρο	
Block (4 Bearing) RV 202-15	1 σετ	
G80 Flange + GS19 Coupling mounting	1 τεμάχιο	

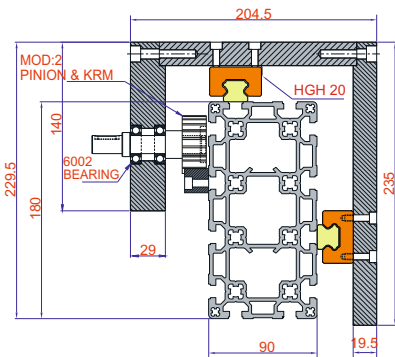
Rack and Pinion Bridge Module 90x90



ΚΑΘΑΡΗ ΔΙΑΔΡΟΜΗ	TIMH
1000 mm	
2000 mm	
3000 mm	
3750 mm	
5000 mm	
5750 mm	

SPARE PARTS		TIMH
G95 Flange + GS19 Coupling mounting	1 τεμάχιο	
G95 Flange + GS24 Coupling mounting	1 τεμάχιο	

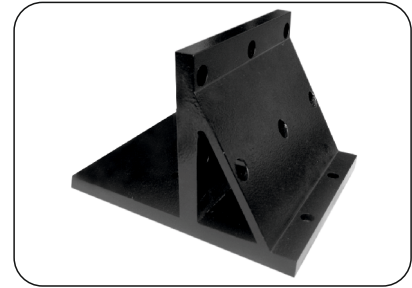
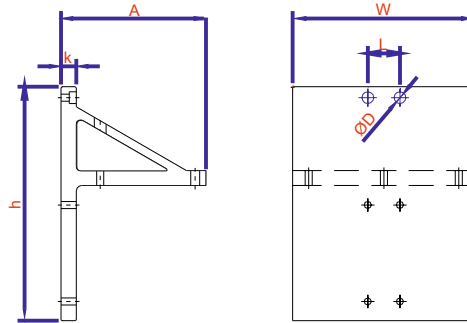
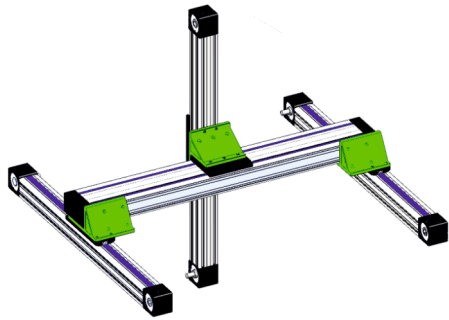
Rack and Pinion Bridge Module 90x180



ΚΑΘΑΡΗ ΔΙΑΔΡΟΜΗ	TIMH
1000 mm	
2000 mm	
3000 mm	
3750 mm	
5000 mm	
5750 mm	

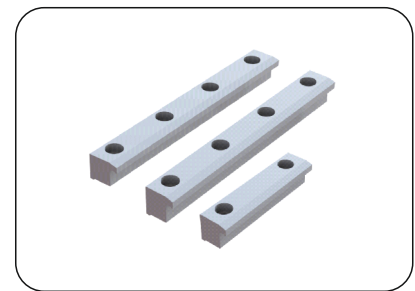
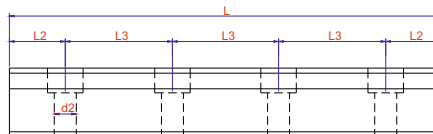
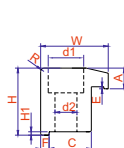
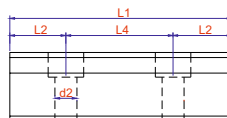
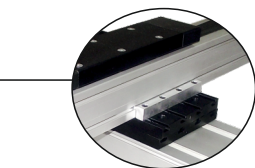
SPARE PARTS		TIMH
G95 Flange + GS24 Coupling mounting	1 τεμάχιο	
G120 Flange + GS19 Coupling mounting	1 τεμάχιο	

X-Y, Y-Z Axis Adapter



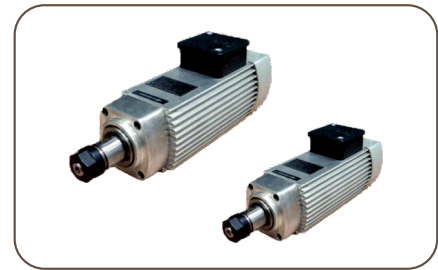
ΚΩΔΙΚΟΣ	TYPE	Point of Contact	h	ØD	k	W	A	L	TIMH
AA 64	X-Y, Y-Z Axis Adapter	80x80 - 64x64 Compact	218	8,5	14	170	110	30	
AA 80	X-Y, Y-Z Axis Adapter	80x80 - 80x160 Compact	218	8,5	14	200	110	60	
AA 100	X-Y, Y-Z Axis Adapter	100x100 - 100x100 Bridge Compact	218	8,5	14	200	140	75	
AA 160	X-Y, Y-Z Axis Adapter	80x160 - 80x80 Compact 3- Axis	218	6,5	14	170	140	60	

Module Connection Adapter



ΚΩΔΙΚΟΣ	TYPE	H	H1	d2	d1	E	A	R	W	C	L	L1	L2	L3	L4	F	TIMH
MCA 80	80 x 80 - 64 x 64 Module Connection Adapter	19,8	1	6,5	10,5	0,5	6	0,5	20	12,5	160	-	12,5	45	60	2,5	
MCA 100	100 x 100 Module Connection Adapter	30,3	1	6,5	10,5	0,5	6	0,5	20	12,5	-	85	12,5	-	60	2,5	
MCA 45	45 x 45 Module Connection Adapter	22,9	1	6,5	10,5	-	5,5	0,5	20	12,5	-	85	12,5	-	60	2,5	
MCA 160	80 x 160 Module Connection Adapter	14,3	1	6,5	10,5	0,5	6	0,5	20	12,5	160	-	12,5	45	60	2,5	
MCA 145	65 x 145 Module Connection Adapter	14,5	1	6,5	10,5	0,5	6	0,5	20	12,5	145	-	12,5	40	-	2,5	
MCA 110	50 x 110 Module Connection Adapter	10,5	1	6,5	10,5	0,5	6	0,5	20	12,5	-	60	10	-	40	2,5	

AREL SPINDLE MOTOR



ΚΩΔΙΚΟΣ	TYPE	POWER	CIRCULATION	PLIERS	GUIDANCE
ARFM. 1Y-M4	ARFM. 1Y-M4	0,75 KW	24.000	ER 16	STEEL BEARING
ARFM. 2Y-M3	ARFM. 2Y-M3	1,4 KW	18.000	ER 20	STEEL BEARING
ARFM. 3Y-S3	ARFM. 3Y-S3	2,2 KW	18.000	ER 20	STEEL BEARING
ARFM. 3Y-L3	ARFM. 3Y-L3	4 KW	18.000	ER 20	STEEL BEARING
ARFM. 4K-M3	ARFM. 4K-M3	5,5 KW	18.000	ER 32	CERAMIC BEARING
ARFM. 4K-L3	ARFM. 4K-L3	7,5 KW	18.000	ER 32	CERAMIC BEARING

TIMH

SPINDLE INVERTER



ΚΩΔΙΚΟΣ	TYPE	POWER	MAX. FREQUENCY	PERFORMANCE VOLTAGE
S310-0,75	S310-0,75	0,75 KW	400 HZ	220 V - SINGLE PHASE
S310-1,5	S310-1,5	1,5 KW	400 HZ	220 V - SINGLE PHASE
L510-2,2	L510-2,2	2,2 KW	400 HZ	220 V - SINGLE PHASE
N3-3,7	N3-3,7	3,7-4 KW	400 HZ	380 V - THREE PHASE
N3-5,5	N3-5,5	5,5 KW	400 HZ	380 V - THREE PHASE
N3-7,5	N3-7,5	7,5 KW	400 HZ	380 V - THREE PHASE
N3-11	N3-11	11 KW	400 HZ	380 V - THREE PHASE
N3-15	N3-15	15 KW	400 HZ	380 V - THREE PHASE

TIMH

Mach 3 Parallel Port Direction Card

Max.Axis quantity : 5
 Max. Quit Frequency : 45 kHz
 Performance voltage : 12 - 24 Vdc
 Entry qty 4
 Exit qty : 2

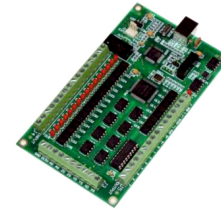


ΚΩΔΙΚΟΣ	PRODUCT NAME
MACH 3-5	FIVE AXES DSP CONTROL SYSTEM CARD MC 14

TIMH

Mach3 USB control board

Max.Axis quantity : 3 & 4
 Max. Quit Frequency : 200 kHz
 Performance voltage : 5 Vdc
 Giriş sayısı : 16
 Exit qty : 8



ΚΩΔΙΚΟΣ	PRODUCT NAME
MACH 3-3	THREE AXES CONTROL CARD USB USB-3X
MACH 3-4	FOUR AXES CONTROL CARD USB USB-4X

TIMH

Mach3 Ethernet control board

Max.Axis quantity : 6
 Max. Quit Frequency : 4000 kHz
 Performance voltage :24 Vdc
 Entry qty: 10
 Exit qty : 7 Röle + 5 Dijital



ΚΩΔΙΚΟΣ	PRODUCT NAME
MACH 3-6	SIX AXIS ETHERNET CONTROL BOARD ETH-6X

TIMH

Mach3 Wireless hand wheel

Max shooting distance : 20 Mt.
 PC connection : USB

4 Axes

5 Axes



ΚΩΔΙΚΟΣ	PRODUCT NAME
MACH 3-W4	FOUR AXES WIRELESS HAND WHEEL
MACH 3-W5	FIVE AXES WIRELESS HAND CONTROL

TIMH

General wireless set reset probe

It is an easy tool used to reset CNC Router counters.
 It works with two AA batteries. It has a wireless shooting distance with 20 metres.



ΚΩΔΙΚΟΣ	PRODUCT NAME
WSRP	WIRELESS SETS RESET PROBE

TIMH

- Στις παραπάνω τιμές δεν περιλαμβάνεται ο Φ.Π.Α.
- Τρόπος πληρωμής μετρητοίς
- Τα μεταφορικά επιβαρύνουν τον πελάτη
- Ο παρών τιμοκατάλογος καταργεί τον προηγούμενο
- Στα προφίλ και στα γραμμικά συστήματα δεν γίνονται επιστροφές
- Στα εξαρτήματα οι επιστροφές θα γίνονται κατόπιν συνεννόησης
- Χρόνος παράδοσης κατόπιν συνεννόησης
- Η εταιρία δεν φέρει καμία ευθύνη για τυχόν φθορές από την μεταφορά

ΑΡΙΘΜΟΣ ΛΟΓΑΡΙΑΣΜΟΥ ΤΡΑΠΕΖΑ ΠΕΙΡΑΙΩΣ:

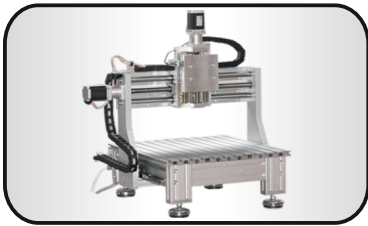
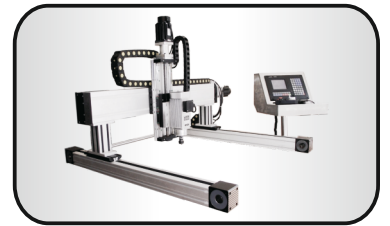
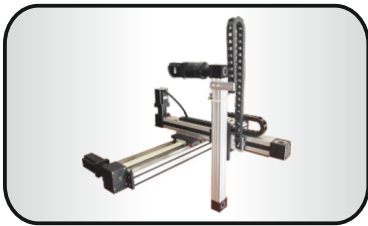
Αρ. λογ.: 5242 0035 75529

IBAN: GR 22017 22420 00524 20035 75529



ΜΕΙΜΑΡΙΔΙΣ

ΕΜΠΟΡΙΑ ΣΙΔΗΡΟΥ - ΑΛΟΥΜΙΝΙΟΥ - ΓΥΨΟΣΑΝΙΔΑΣ - ΧΡΩΜΑΤΩΝ
ΣΟΒΑΔΩΝ - ΙΝΟΧ ΠΑΝΤΟΣ ΤΥΠΟΥ - ΒΙΟΜΗΧΑΝΙΚΑ ΕΡΓΑΛΕΙΑ
(ΣΤΡΑΝΤΖΑ - ΨΑΛΙΔΙ - ΚΥΛΙΝΔΡΟΣ - ΠΑΝΤΟΓΡΑΦΟΣ)



 **luminium**
Profile



ΑΦΟΙ ΜΕΪΜΑΡΙΔΗ Ο.Ε.



Σταδίου 97
Βέροια



23310 23342
23310 23178



23310 67869



www.meimaridis.gr



info@meimaridis.gr