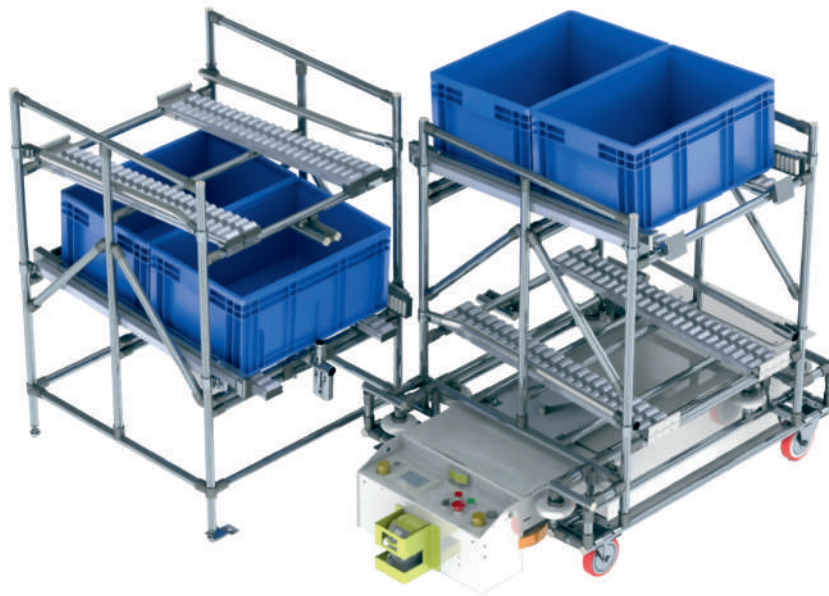




# Aluminium Profile



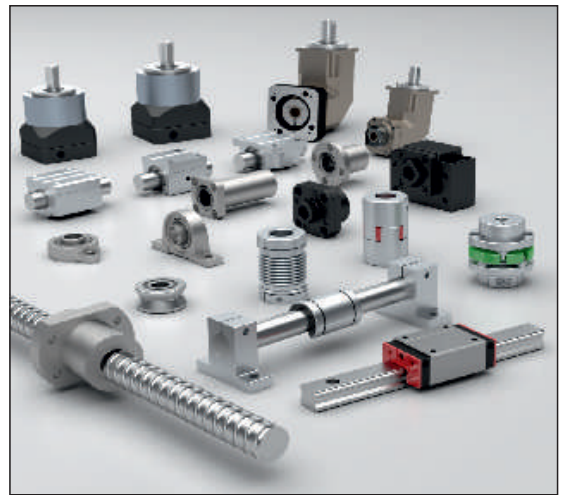
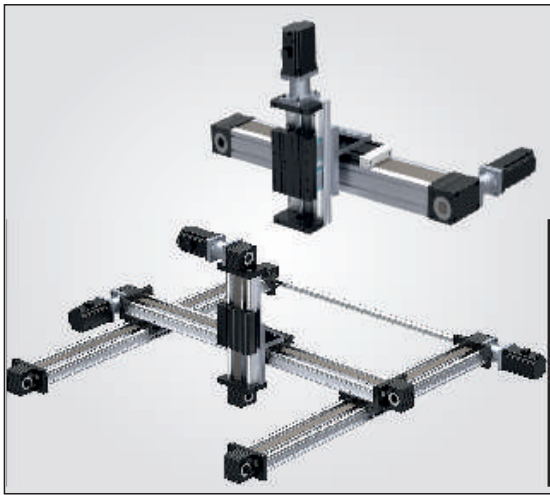
SHELVING DYNAMIC SYSTEM



# 2024

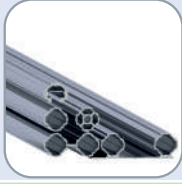
e-mail: [sales@aluminium-profile.gr](mailto:sales@aluminium-profile.gr)

[www.aluminium-profile.gr](http://www.aluminium-profile.gr)





## Applications



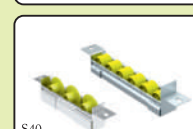
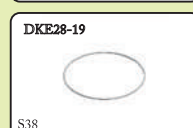
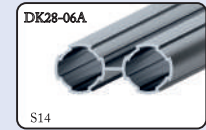
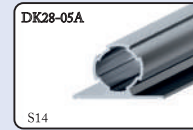
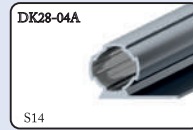
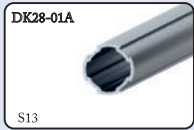
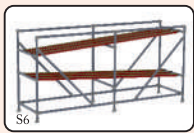
## Dynamic Aluminium Profiles



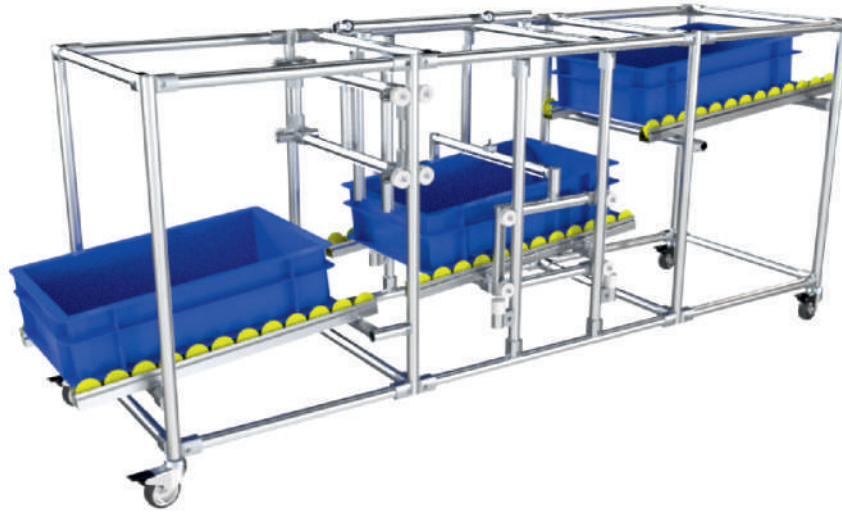
## Connection Elements



## Accessories

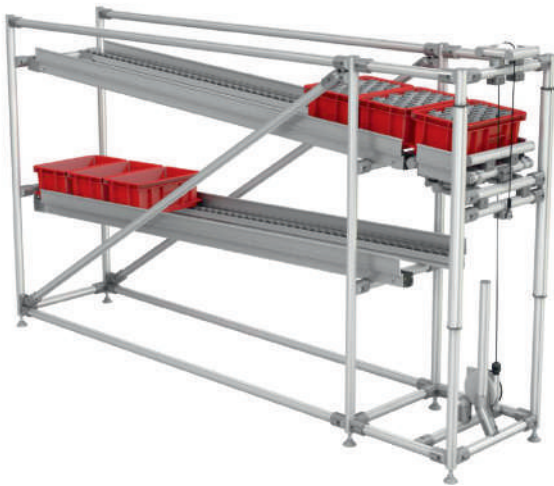




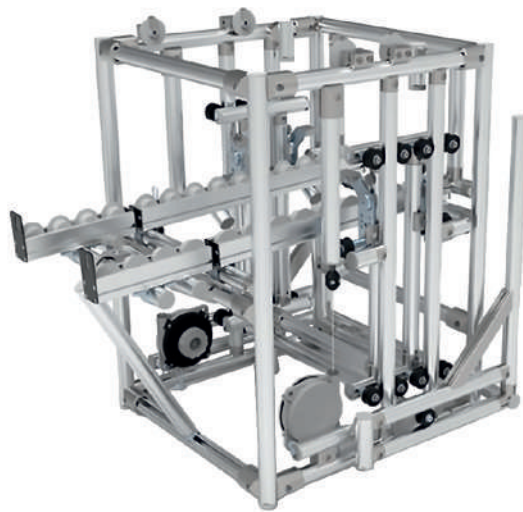




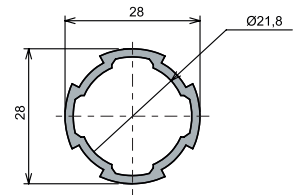
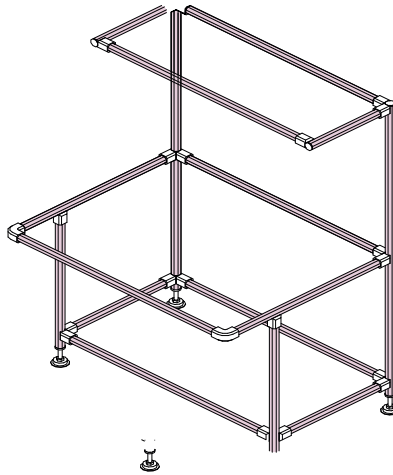








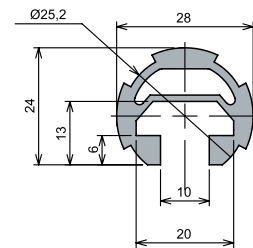
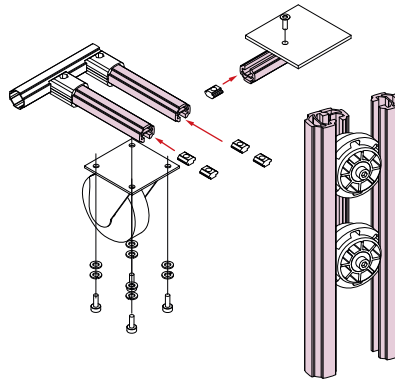
Ø28-1,7 mm Pipe Profile



Code	Material	Moment of Inertia		Moment of Resistance		Area	Weight
		$I_x$	$I_y$	$W_x$	$W_y$		
DK28-01A	6063	$1.16\text{cm}^4$	$1.16\text{cm}^4$	$0.83\text{cm}^3$	$0.83\text{cm}^3$	$1.46\text{cm}^2$	0.54 Kg/m

Standart : 6000 mm

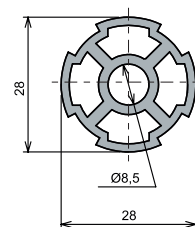
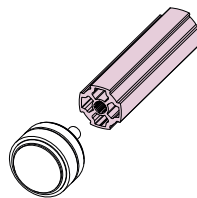
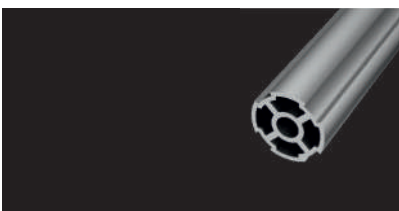
Ø28 Channel Profile



Code	Material	Moment of Inertia		Moment of Resistance		Area	Weight
		$I_x$	$I_y$	$W_x$	$W_y$		
DK28-02A	6063	$1.13\text{cm}^4$	$1.87\text{cm}^4$	$0.08\text{cm}^3$	$1.13\text{cm}^3$	$2.4\text{cm}^2$	0.9 Kg/m

Standart : 6000 mm

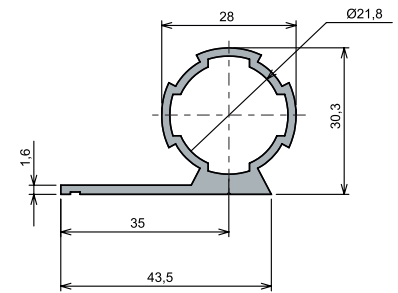
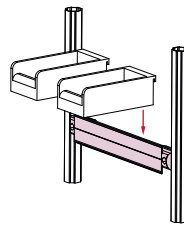
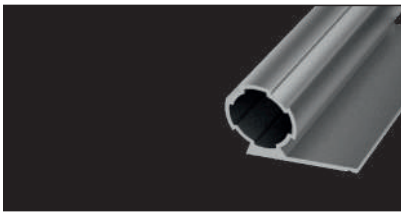
Ø28-1,7 mm Heavy Series Pipe Profile



Code	Material	Moment of Inertia		Moment of Resistance		Area	Weight
		$I_x$	$I_y$	$W_x$	$W_y$		
DK28-03A	6063	$1.41\text{cm}^4$	$1.41\text{cm}^4$	$0.10\text{cm}^3$	$0.10\text{cm}^3$	$2.44\text{cm}^2$	0.91 Kg/m

Standart : 6000 mm

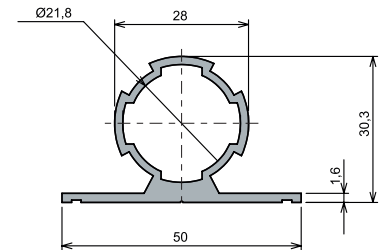
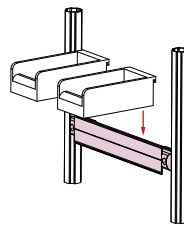
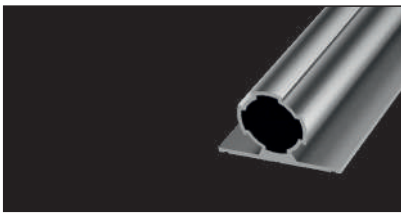
## Ø28-1,7 mm L-Pipe Profile



Code	Material	Moment of Inertia		Moment of Resistance		Area	Weight
		$I_x$	$I_y$	$W_x$	$W_y$		
DK28-04A	6063	$1.83\text{cm}^4$	$3.69\text{cm}^4$	$0.13\text{cm}^3$	$0.26\text{cm}^3$	$2.35\text{cm}^2$	0.87 Kg/m

Standart : 6000 mm

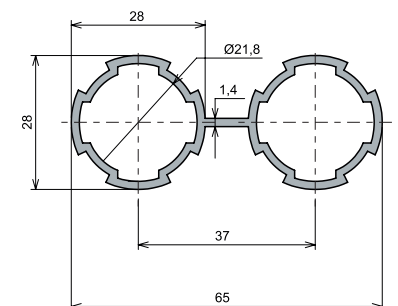
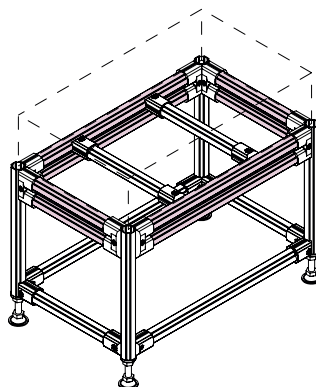
## Ø28-1,7 mm T-Pipe Profile



Code	Material	Moment of Inertia		Moment of Resistance		Area	Weight
		$I_x$	$I_y$	$W_x$	$W_y$		
DK28-05A	6063	$2.59\text{cm}^4$	$2.81\text{cm}^4$	$0.18\text{cm}^3$	$0.20\text{cm}^3$	$2.45\text{cm}^2$	0.91 Kg/m

Standart : 6000 mm

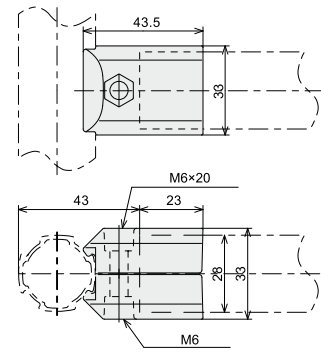
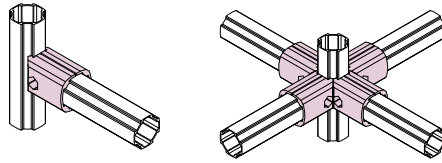
## Ø28-1,7 mm Double Pipe Profile



Code	Material	Moment of Inertia		Moment of Resistance		Area	Weight
		$I_x$	$I_y$	$W_x$	$W_y$		
DK28-06A	6063	$2.33\text{cm}^4$	$1.23\text{cm}^4$	$0.17\text{cm}^3$	$0.09\text{cm}^3$	$3.05\text{cm}^2$	1.13 Kg/m

Standart : 6000 mm

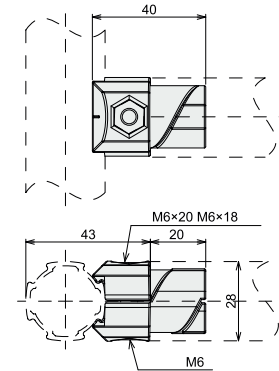
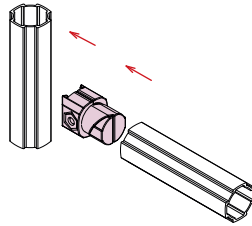
## External Versatile Connectivity



<b>Code</b>	DKJ-A01
<b>Material</b>	Cast Aluminium
<b>Weight</b>	52 Gr

<b>Shear load (N)</b>	760	<b>Pulling load (N)</b>	400	<b>Carrying Capacity (N)</b>		<b>Length L (MM)</b>	<b>Carrying Capacity (N)</b>	
				<b>Vertical</b>	<b>Horizontal</b>		<b>Vertical</b>	<b>Horizontal</b>
						100	105	52
						200	52	27
						300	35	17
						500	21	10
						<b>Loading Moment (N*m)</b>	10	5

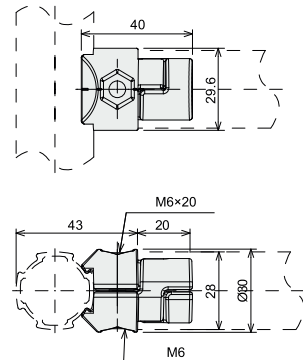
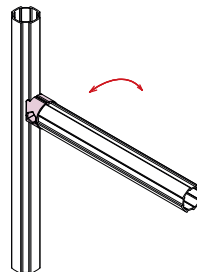
## Internal Versatile Connectivity



<b>Code</b>	DKJ28-B01
<b>Material</b>	Cast Aluminium
<b>Weight</b>	45 Gr

<b>Shear load (N)</b>	720	<b>Pulling load (N)</b>	400	<b>Carrying Capacity (N)</b>		<b>Length L (MM)</b>	<b>Carrying Capacity (N)</b>	
				<b>Vertical</b>	<b>Horizontal</b>		<b>Vertical</b>	<b>Horizontal</b>
						100	86	57
						200	43	29
						300	29	19
						500	17	11
						<b>Loading Moment (N*m)</b>	9	6

## Swivel Connectivity

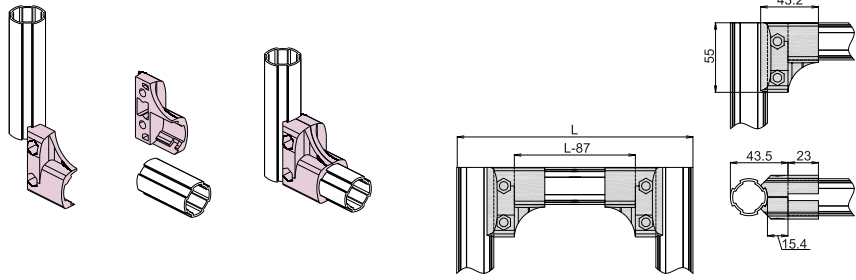


<b>Code</b>	DKJ28-B01D
<b>Material</b>	Cast Aluminium
<b>Weight</b>	43 Gr

<b>Shear load (N)</b>	760	<b>Pulling load (N)</b>	400	<b>Carrying Capacity (N)</b>		<b>Length L (MM)</b>	<b>Carrying Capacity (N)</b>	
				<b>Vertical</b>	<b>Horizontal</b>		<b>Vertical</b>	<b>Horizontal</b>
						100	86	57
						200	43	29
						300	29	19
						500	17	11
						<b>Loading Moment (N*m)</b>	9	6

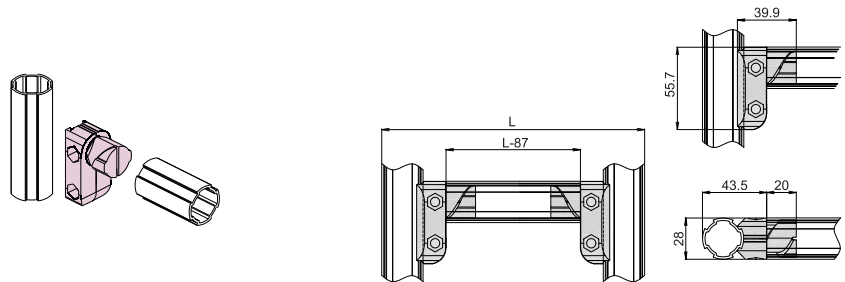


## Power all-around Connection-External



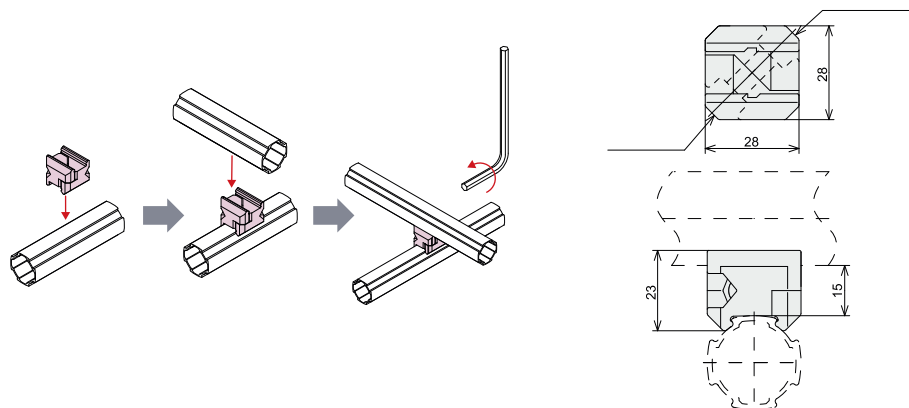
Code	Material	Weight
DKJ28-A01S	Cast Aluminium	90 Gr

## Power all-around Connection-Internal



Code	Material	Weight
DKJ28-B01S	Cast Aluminium	90 Gr

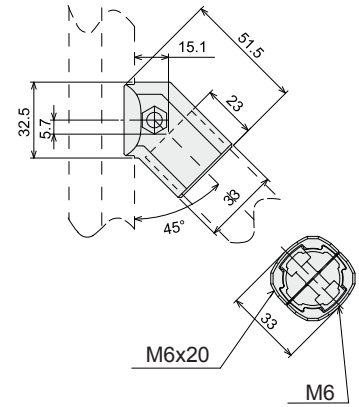
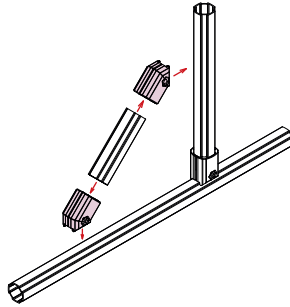
## Cross Connection



<b>Code</b>	DKJ28-A06
<b>Material</b>	Cast Aluminium
<b>Weight</b>	32 Gr

Max load (N)	755	Carrying Capacity (N)		Length L (MM)	(PC) (N)	
		Vertical	Horizontal			
				100	95	62
				200	48	31
				300	31	21
				500	19	12
<b>Loading Moment (N*m)</b>					10	6

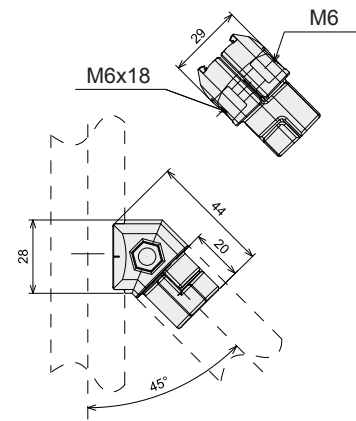
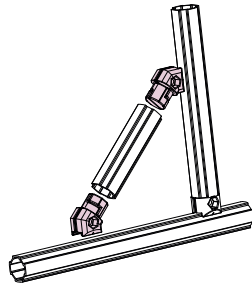
## 45° Connection-External



<b>Code</b>	DKJ28-A09
<b>Material</b>	Cast Aluminium
<b>Weight</b>	63 Gr

Shear load (N)	720	Pulling load (N)	400	Carrying Capacity (N)		Length L (MM)	Carrying Capacity (N)
				Vertical	Horizontal		
						100	157
						200	79
						300	52
						500	31
						Loading Moment (N*m)	16

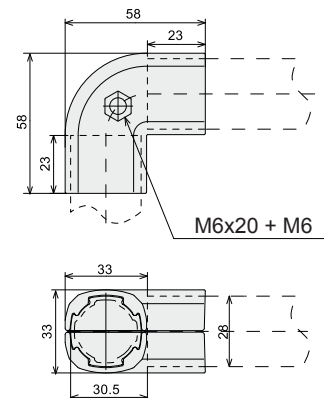
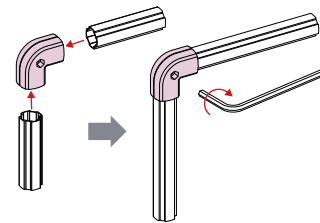
## 45° Connection-Internal



<b>Code</b>	DKJ28-B09
<b>Material</b>	Cast Aluminium
<b>Weight</b>	48 Gr

Shear load (N)	665	Pulling load (N)	247	Carrying Capacity (N)		Length L (MM)	Carrying Capacity (N)
				Horizontal			
						100	52
						200	27
						300	17
						500	10
						Loading Moment (N*m)	5

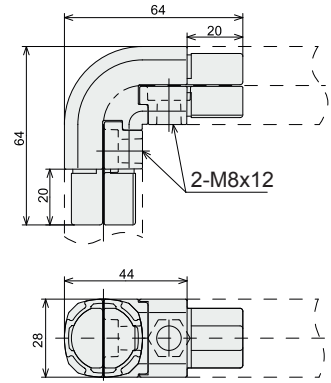
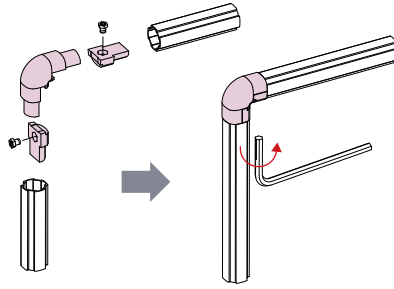
## 90° Connection-External



<b>Code</b>	DKJ28-A15
<b>Material</b>	Cast Aluminium
<b>Weight</b>	96 Gr

Pulling load (N)	200	Carrying Capacity (N)		Length L (MM)	Carrying Capacity (N)		
		Vertical	Horizontal		Vertical	Horizontal	
					100	380	
					200	190	
					300	126	
					500	76	
					Loading Moment (N*m)	38	
							19

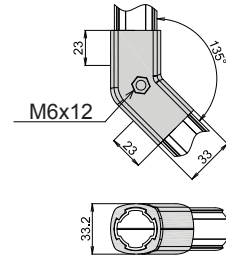
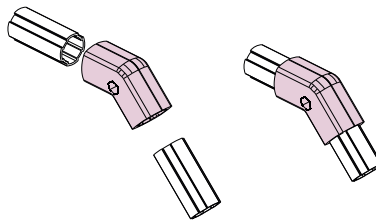
90° Connection-Internal



<b>Code</b>	DKJ28-B15
<b>Material</b>	Cast Aluminium
<b>Weight</b>	130 Gr

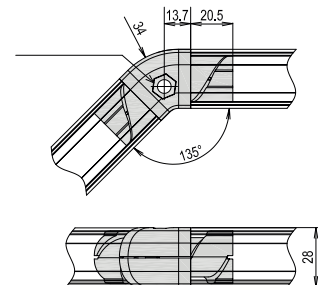
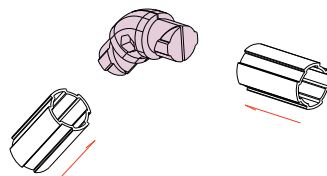
Max load (N)	420		Carrying Capacity (N)		Length L (MM)	Carrying Capacity (N)	
	Vertical	Horizontal	Vertical	Horizontal		Vertical	Horizontal
			100	124	62	62	
			200	62	31	31	
			300	41	21	21	
			500	25	12	12	
			12	6			

135° Connection-External



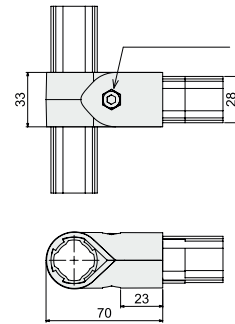
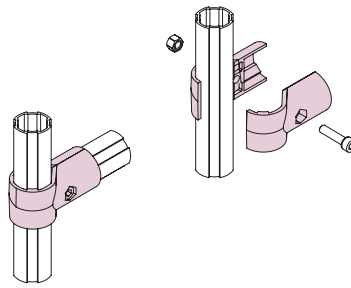
Code	Material	Weight
DKJ28-A03	Cast Aluminium	100 Gr

135° Connection-Internal



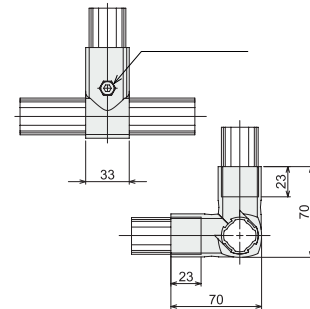
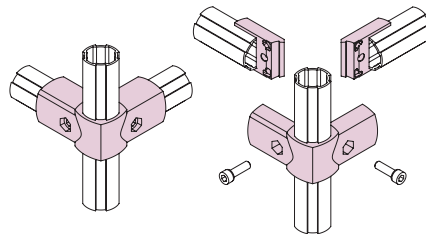
Code	Material	Weight
DKJ28-B03	Cast Aluminium	125 Gr

2-Way Connection



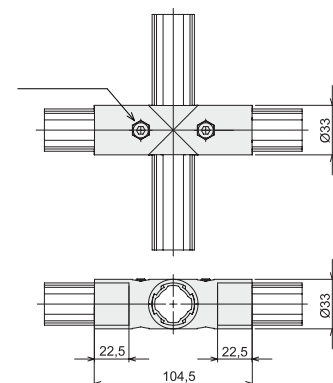
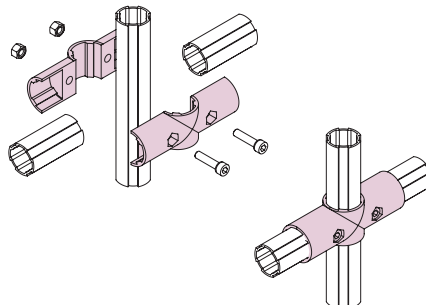
Code	Material	Weight
DKJ28-C01	Cast Aluminium	91 Gr

3-Way Connection



Code	Material	Weight
DKJ28-C02	Cast Aluminium	127 Gr

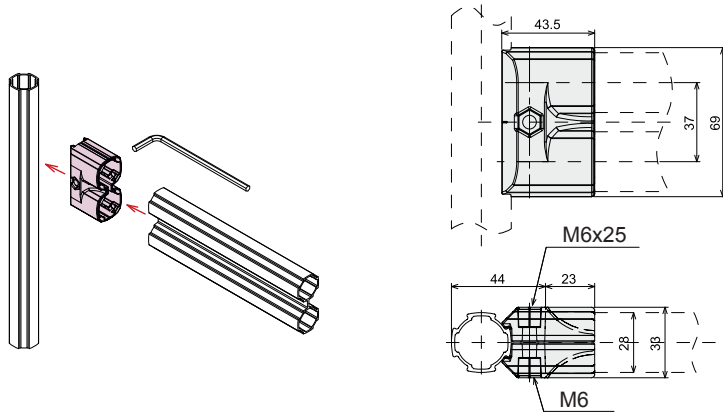
4-Way Connection



Code	Material	Weight
DKJ28-C04	Cast Aluminium	130 Gr



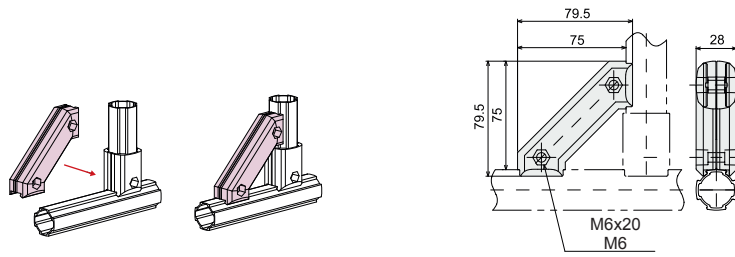
## Versatile Dual Connection



<b>Code</b>	DKJ28-A14
<b>Material</b>	Cast Aluminium
<b>Weight</b>	114 Gr

Shear load (N)	950	Pulling load (N)	428	Carrying Capacity (N)		Length L (MM)	Carrying Capacity (N)	
				Vertical	Horizontal		Vertical	Horizontal
						100	475	219
				200	238	109		
				300	159	73		
				500	95	44		
				<b>Loading Moment (N*m)</b>	48	22		

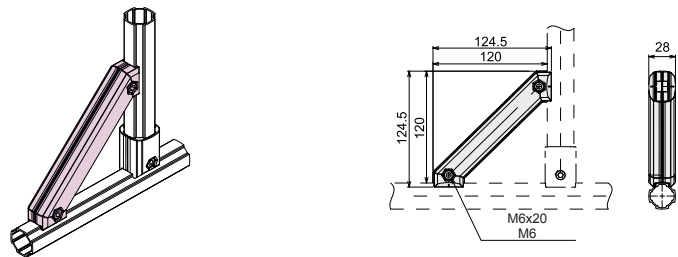
## Corner Support Connection-Short



<b>Code</b>	DKJ28-A09D
<b>Material</b>	Cast Aluminium
<b>Weight</b>	96 Gr

Shear load (N)	755	Carrying Capacity (N)		Length L (MM)	Carrying Capacity (N)
		Diagonally			
				100	380
		200	190		
		300	126		
		500	76		
		<b>Loading Moment (N*m)</b>	90		

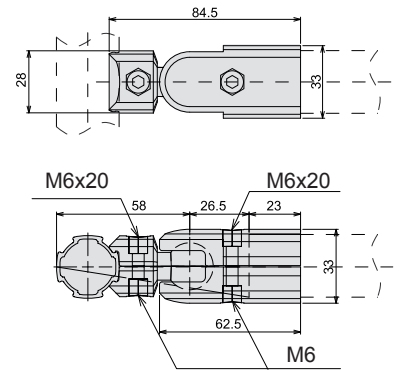
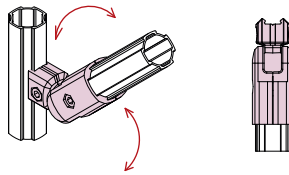
## Corner Support Connection-Long



<b>Code</b>	DKJ28-A09E
<b>Material</b>	Cast Aluminium
<b>Weight</b>	176 Gr

Shear load (N)	755	Carrying Capacity (N)		Length L (MM)	Carrying Capacity (N)
		Diagonally			
				100	380
		200	190		
		300	126		
		500	76		
		<b>Loading Moment (N*m)</b>	90		

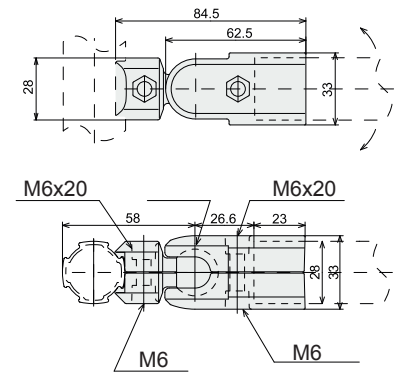
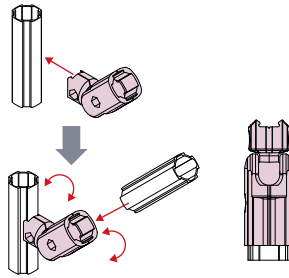
90° Angle Fitting-External



<b>Code</b>	DKJ-28-A07D
<b>Material</b>	Cast Aluminium
<b>Weight</b>	127 Gr

<b>Max load (N)</b>	250	<b>Unit load</b>	247
		<b>Unit load</b>	12

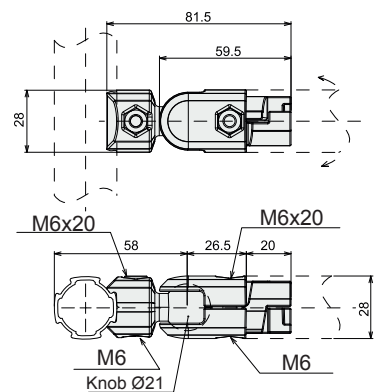
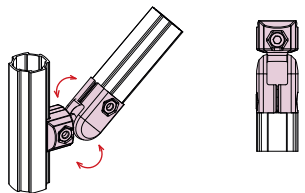
180° Angle Fitting-External



<b>Code</b>	DKJ-28-A07
<b>Material</b>	Cast Aluminium
<b>Weight</b>	121 Gr

<b>Max load (N)</b>	250	<b>Unit load</b>	247
		<b>Unit load</b>	12

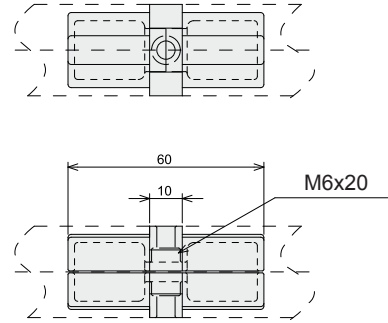
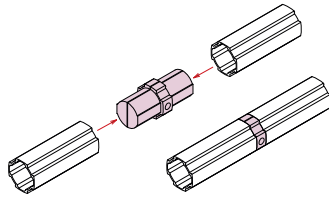
180° Angle Fitting-Internal



<b>Code</b>	DKJ28-B07
<b>Material</b>	Cast Aluminium
<b>Weight</b>	104 Gr

<b>Max load (N)</b>	760	<b>Max load (N)</b>	162

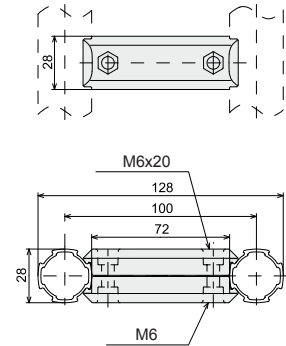
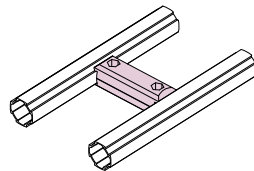
## Extension Part-Internal



<b>Code</b>	DKJ28-B04
<b>Material</b>	Cast Aluminium
<b>Weight</b>	47 Gr

Shear load (N)	Carrying Capacity (N)		Length L (MM)	Carrying Capacity (N)	
	Vertical	Horizontal		Vertical	Horizontal
600			100	124	760
			200	62	380
			300	41	254
			500	25	152
			<b>Loading Moment (N*m)</b>	12	76

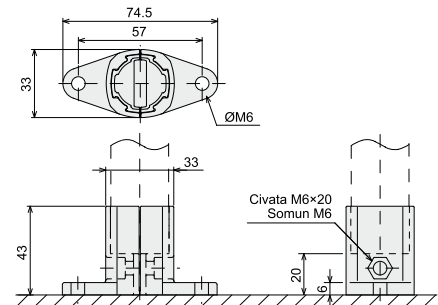
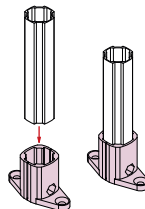
## Brige Connection



<b>Code</b>	DKJ28-A08
<b>Material</b>	Cast Aluminium
<b>Weight</b>	89 Gr

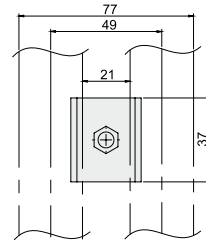
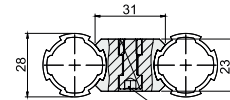
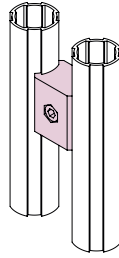
Max load (N)	855	Max load	171	Max load	133	Burden Direction	Length L (MM)	(PC) (N)
							100	81
							200	41
							300	27
							500	16
							<b>Loading Moment (N*m)</b>	8

## Ground Fitting



Code	Material	Weight
DKJ28-A17	Cast Aluminium	79 Gr

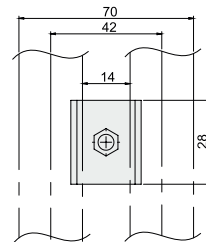
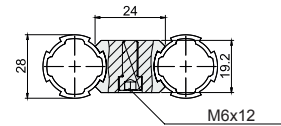
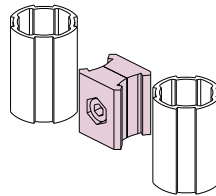
Parallel Connector Long



<b>Code</b>	DKJ28-A10
<b>Material</b>	Cast Aluminium
<b>Weight</b>	51 Gr

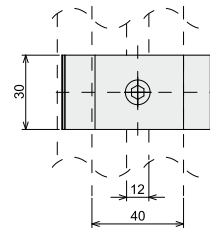
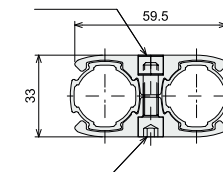
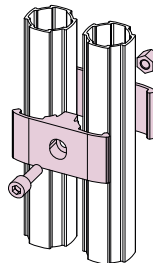
Drawing load (N)	258	Drawing load (N)	380	Burden Direction Diagonally	Length L (MM)	Carrying Capacity (N)
Drawing load (N)	7	Drawing load (N)	7			
					100	81
					200	41
					300	27
					500	16
					Loading Moment (N*m)	8

Parallel Connector Short



Code	Material	Weight
DKJ28-A12	Cast Aluminium	26.5 Gr

Parallel Connector Armful

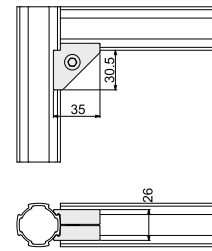
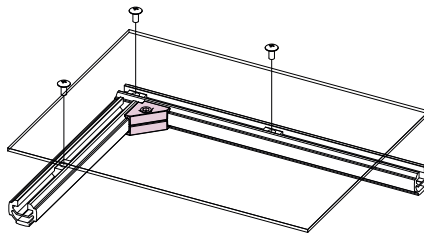


<b>Code</b>	DKJ28-A11
<b>Material</b>	Cast Aluminium
<b>Weight</b>	73 Gr

Drawing load (N)	912	Max load (N)	475	Burden Direction Diagonally	Length L (MM)	Carrying Capacity (N)
					200	86
					300	57
					500	34
					Loading Moment (N*m)	17

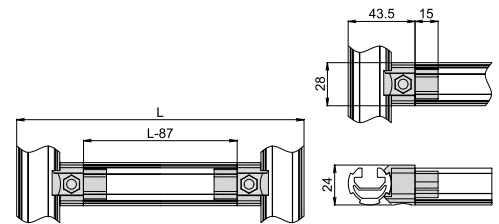
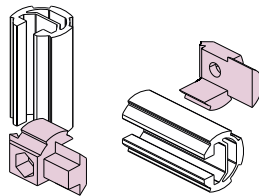


## 90° Corner Connection



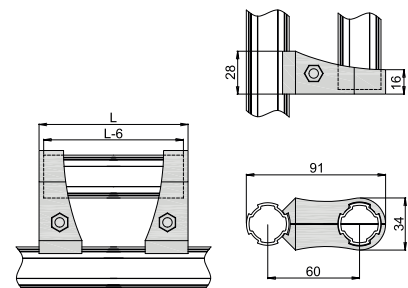
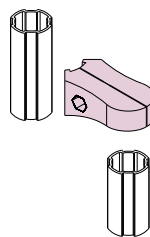
Code	Material	Weight
DKJ28-A19	Cast Aluminium	45 Gr

## Channel Connection



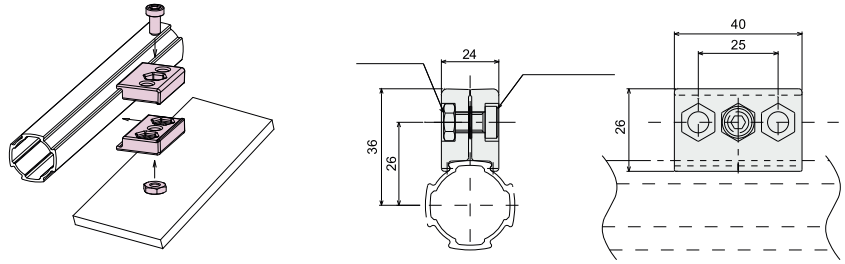
Code	Material	Weight
DKJ28-B05	Cast Aluminium	45 Gr

## Handle Forming Connection



Code	Material	Weight
DKJ28-A16	Cast Aluminium	8Gr

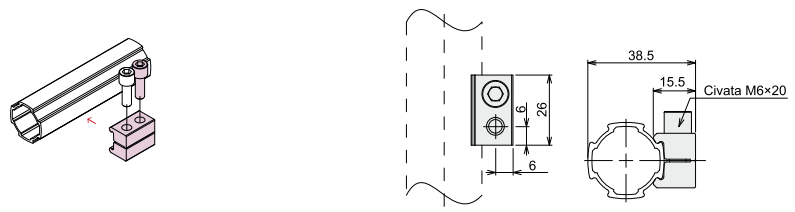
Mounting Bracket Single Axis Fit Long



<b>Code</b>	DKJ28-A13
<b>Material</b>	Cast Aluminium
<b>Weight</b>	57 Gr

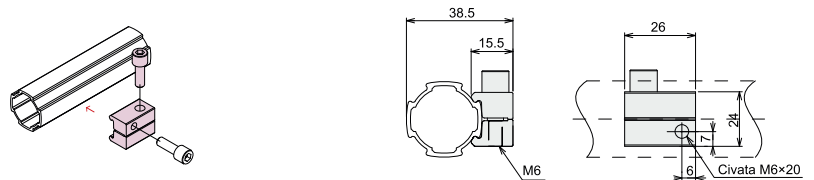
<b>Max load (N)</b>	390	<b>Unit load</b>	475
		<b>Unit load</b>	6

Mounting Bracket Single Axis Fit Short



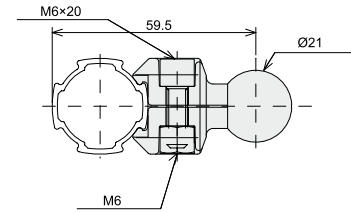
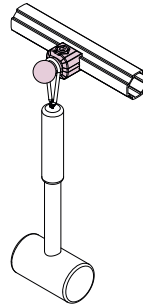
Code	Material	Weight
DKJ28-A20	Cast Aluminium	23 Gr

Mounting Bracket Double Axis Fit



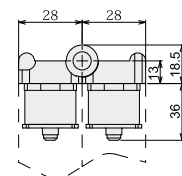
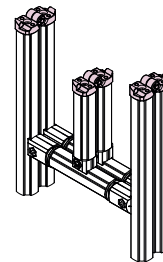
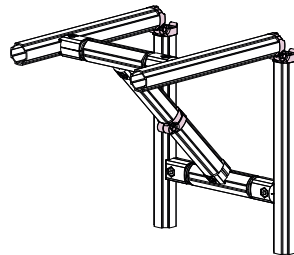
Code	Material	Weight
DKJ28-A21	Cast Aluminium	25 Gr

Hanger Knob

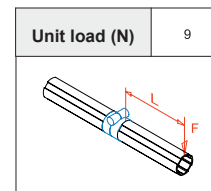


Code	Material	Weight
DKJ28-A18	Cast Aluminium	42 Gr

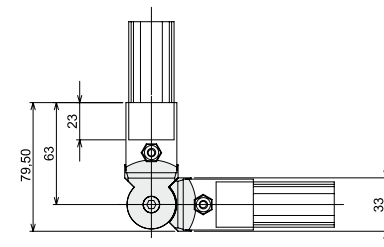
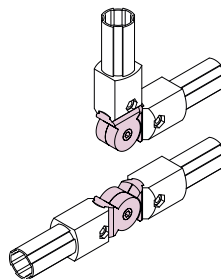
Knuckle-Pin Connection



<b>Code</b>	DKE28-07
<b>Material</b>	Cast Aluminium
<b>Weight</b>	118 Gr

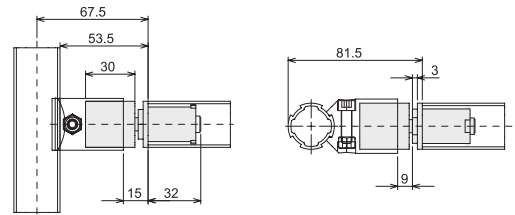
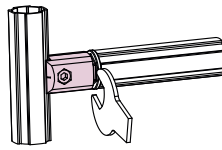
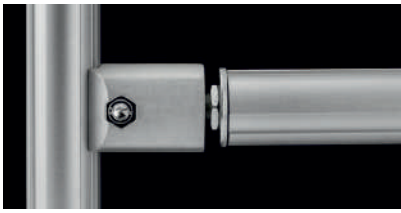


Knuckle Connection



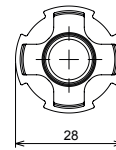
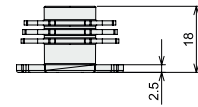
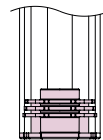
Code	Material	Weight
DKE28-10	Cast Aluminium	68 Gr

Rotating Fitting



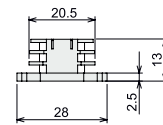
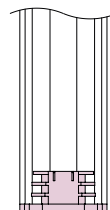
Code	Material	Weight
DKE28-08	Cast Aluminium	78 Gr

Pipe Profile Cover



Code	Material	Weight
DKP28-01	Polypropylene	2 Gr

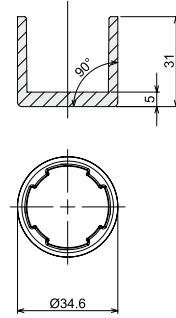
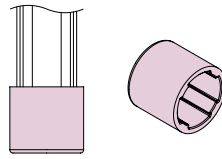
Channel Profile Cover



Code	Material	Weight
DKP28-03	Polypropylene	2 Gr

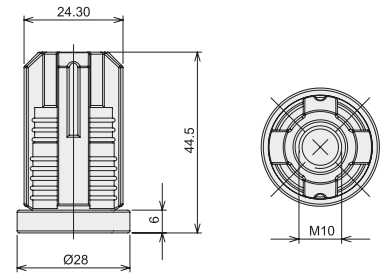
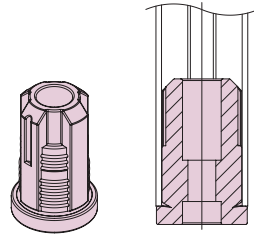


Foot Plastic



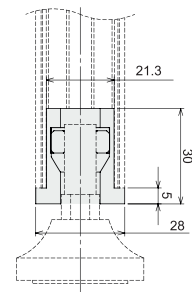
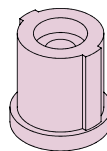
Code	Material	Weight
DKP28-04	Polypropylene	8 Gr

Foot Bracket Plastic



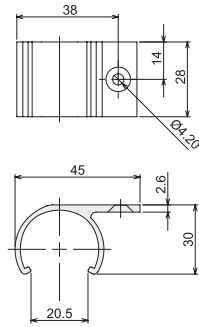
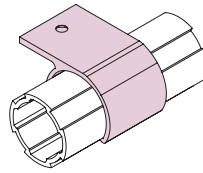
Code	Material	Weight
DKP28-10	Polypropylene	28 Gr

Foot Bracket Metal



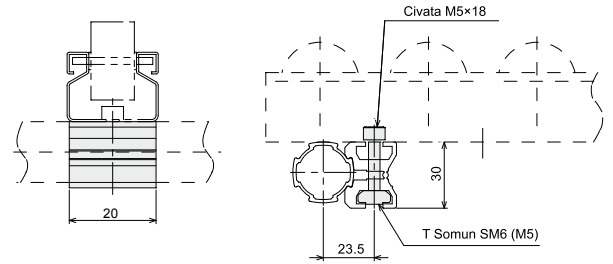
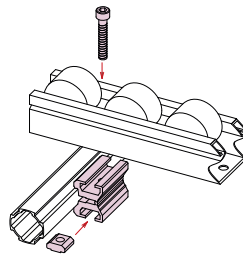
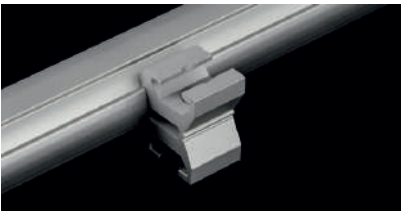
Code	Material	Weight
DKE28-17	Cast Aluminium	114 Gr

Plate Fastening Part



Code	Material	Weight
DKE28-01	Cast Aluminium	14 Gr

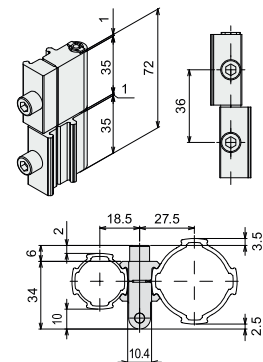
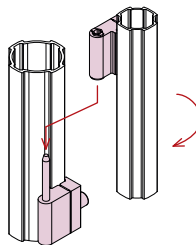
Plate Fixing Bracket Holder



<b>Code</b>	DKE28-05
<b>Material</b>	Cast Aluminium
<b>Weight</b>	27 Gr

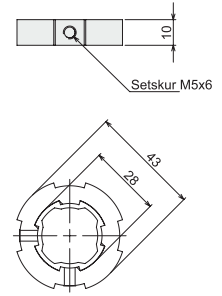
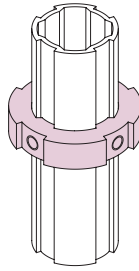
	250	247
		12

Hinge Metal



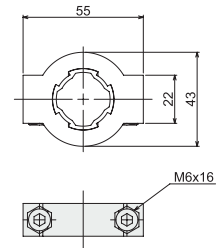
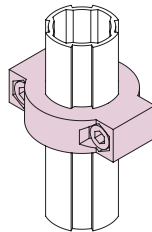
Code	Material	Weight
DKE28-27L	Cast Aluminium	86 Gr
DKE28-27R	Cast Aluminium	86 Gr

Positioning Ring Horizontal



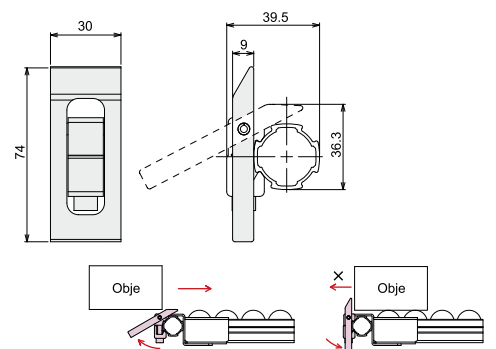
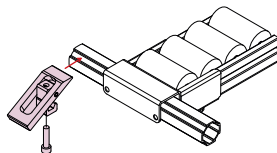
Code	Material	Weight
DKE28-03	Cast Aluminium	17 Gr

Positioning Ring Vertical



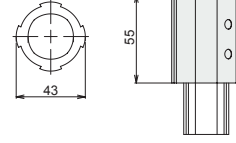
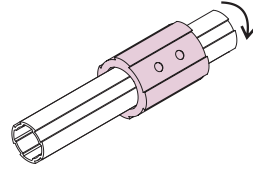
Code	Material	Weight
DKE28-04	Cast Aluminium	54 Gr

One-Way Stopper



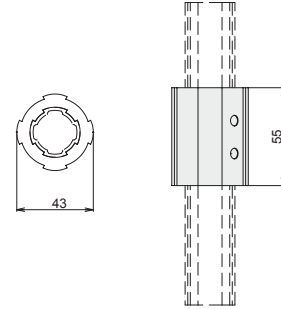
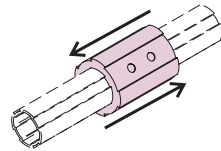
Code	Material	Weight
DKE28-29	Cast Aluminium	52 Gr

Slider Part Rotary Type



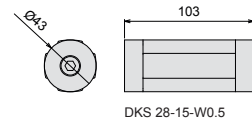
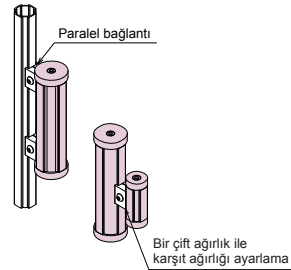
Code	Material	Weight
DKE28-L55Z	6065T6+Polypropylene	48 Gr

Deadbolt Part

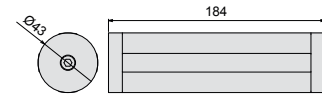


Code	Material	Weight
DKE28-L55D	6065T6+Polypropylene	46 Gr

Opposing Weight Part



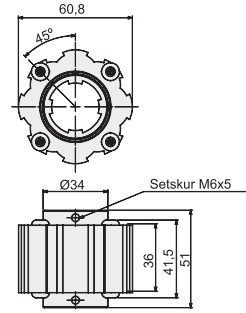
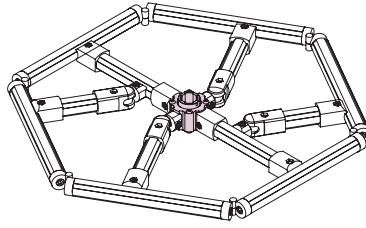
DKS 28-15-W0.5



DKS 28-15-W1

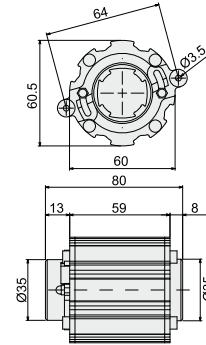
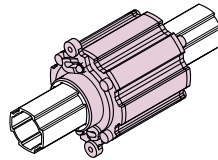
Code	Material	Weight
DKS 28-15-W0.5	6065T6+Carbon Steel	500 Gr
DKS 28-15-W1	6065T6+Carbon Steel	1000 Gr

Rotor



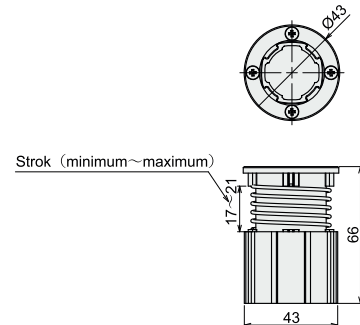
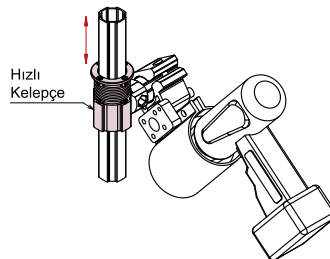
Code	Material	Weight
DKE28-12	6065T6+Polypropylene	208 Gr

Locked Rotor



Code	Material	Weight
DKE28-31	6065T6+Polypropylene+Carbon Steel	345 Gr

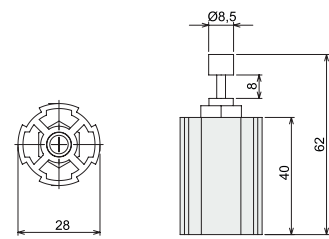
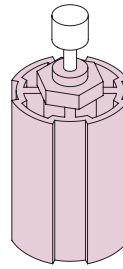
Height Adjuster



Code	Material	Weight
DKE28-30	6065T6+Carbon Steel	99 Gr

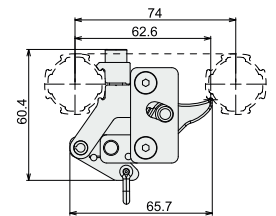
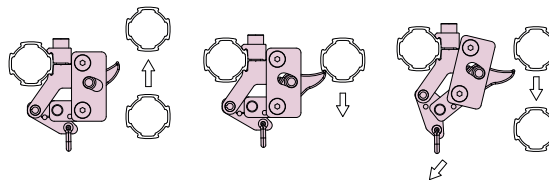
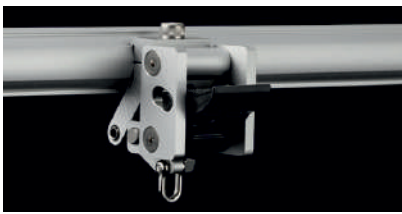


Ø28 Hydraulic Damper Stroke



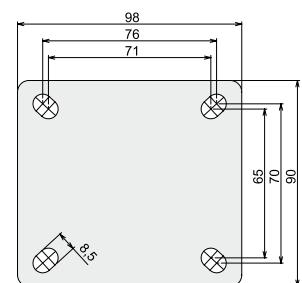
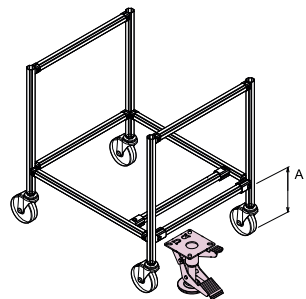
Code	Material	Weight
DKE28-26	6065-T6+Carbon steel	40 Gr

Vertical Elavator Lock



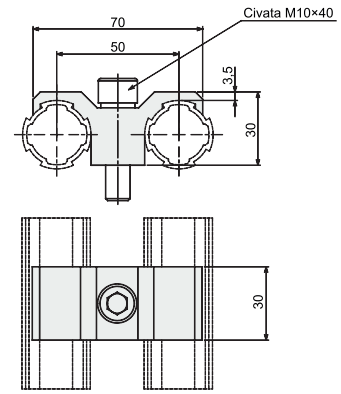
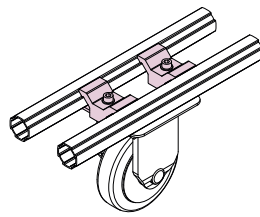
Code	Material	Weight
DKE28-35	6065-T6+Polypropylene+Carbon steel	130 Gr

Floor Braking Lift



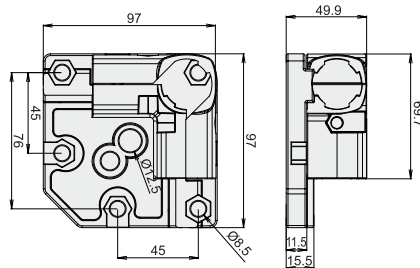
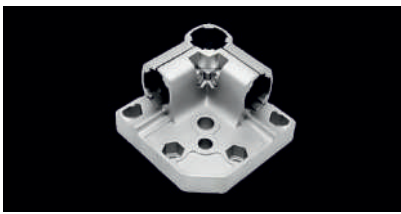
Code	Material	Weight
DKE28-36-4	DKP	1400 Gr

Ø28 Wheel Bracket



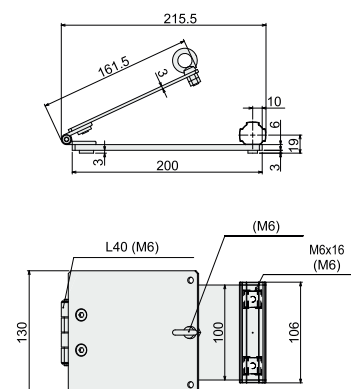
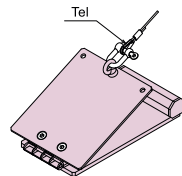
Code	Material	Weight
DKE28-02	Cast Aluminium	84 Gr

Ø28 Wheel Bracket



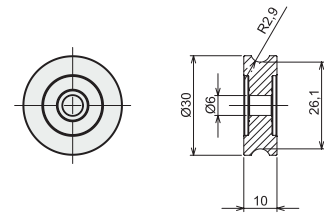
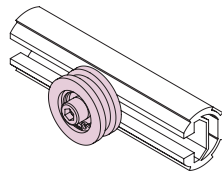
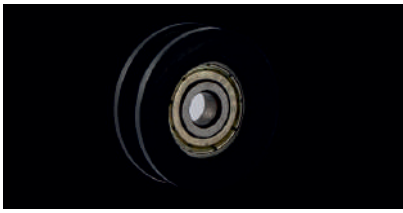
Code	Material	Weight
DKE28-11	Cast Aluminium	410 Gr

Foot Pedal



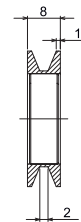
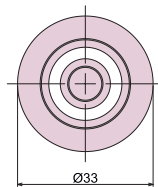
Code	Material	Weight
DKE28-37	Cast Aluminium	688 Gr

Channel Plastic Reel Ø30



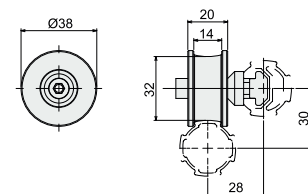
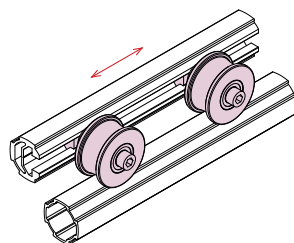
Code	Material	Weight
DKE28-17	Polypropylene+Carbon steel	12 Gr

Channel Metal Reel Ø33



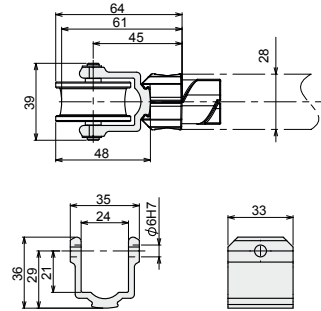
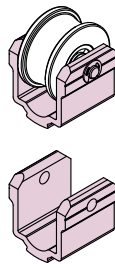
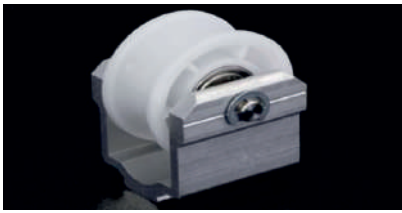
Code	Material	Weight
DKE28-18	Carbon steel	30 Gr

Channel Plastic Reel Ø38



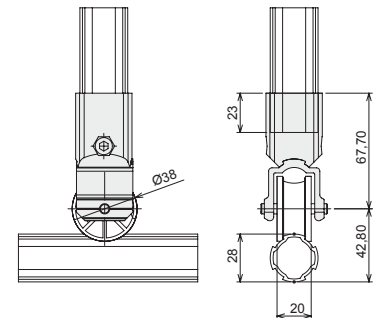
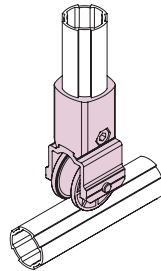
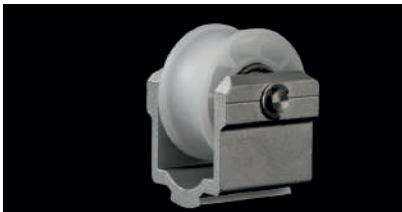
Code	Material	Weight
DKZ28-Z09	Carbon steel+Derlin	63 Gr

Slide Roller E 28



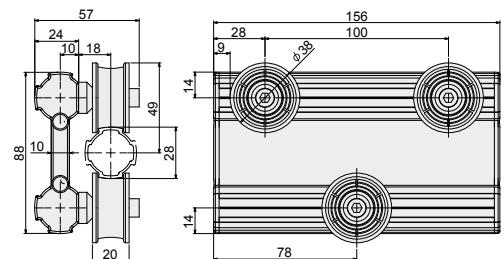
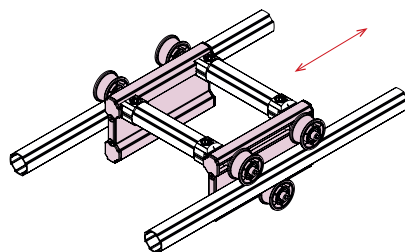
Code	Material	Weight
DKE28-28	6065T6+Delrin	66 Gr

Slide Roller Z 28/10



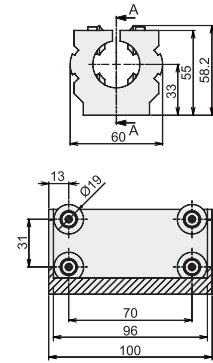
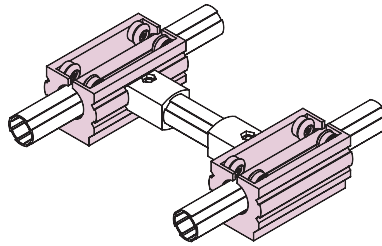
Code	Material	Weight
DKZ28-Z10	6065T6+Delrin	69 Gr

Slider Wheel



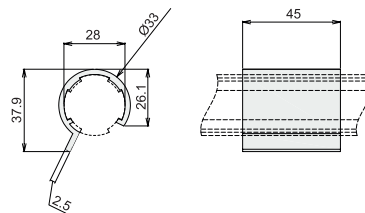
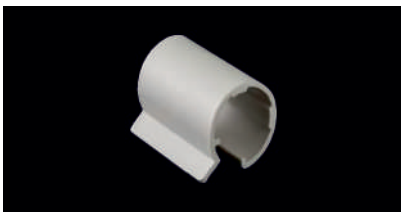
Code	Material	Weight
DKE28-38	6065T6+Delrin	460 Gr

Ø28 Slider Skid



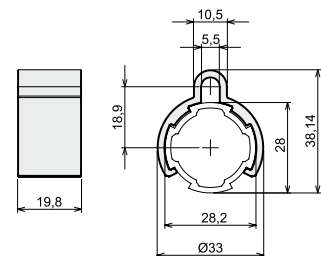
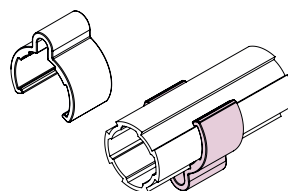
Code	Material	Weight
DKE28-13-L100	6065-T6+Polypropylene+Carbon steel	243 Gr

Ø28 Wear Plastic



Code	Material	Weight
DKL40-03	Polypropylene	1.6 Gr

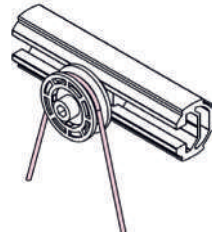
Ø28 Label Hanging Clip



Code	Material	Weight
DKP28-05	Polypropylene	3 Gr

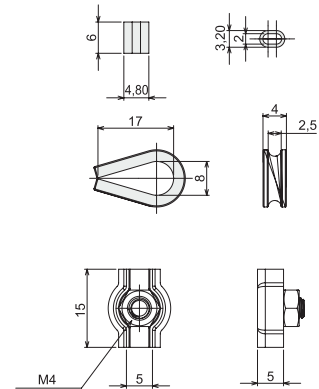
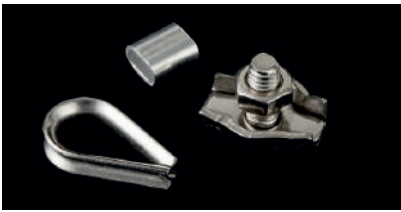


Plastic-Coated Stainless Steel Rope



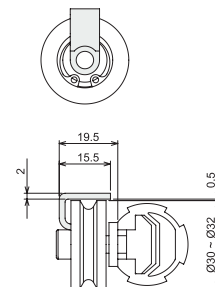
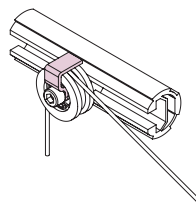
Code	Material	Weight
DKE28-19	Stainless steel	12 Gr/Mt

Rope Connection Clip



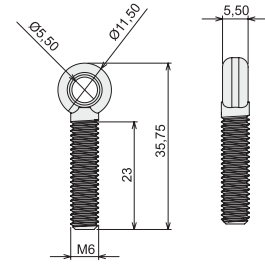
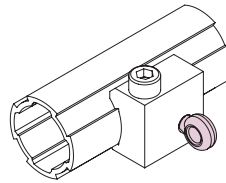
Code	Material	Weight
DKE28-20	Carbon steel	5 Gr

Rope Positioning Part



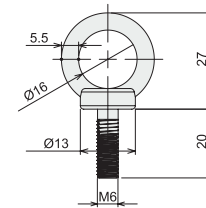
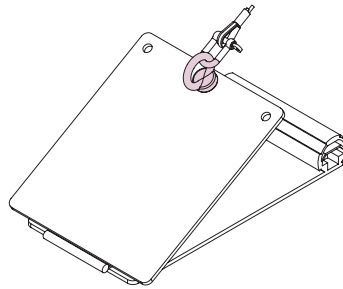
Code	Material	Weight
DKE28-24	Carbon steel	5 Gr

Ring Bolt



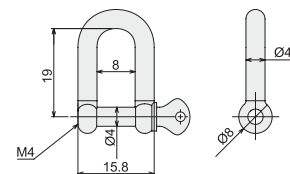
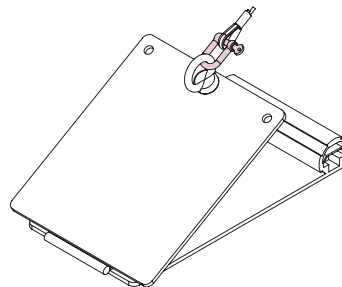
Code	Material	Weight
DKE28-21	Stainless steel	5 Gr

Ring Bolt



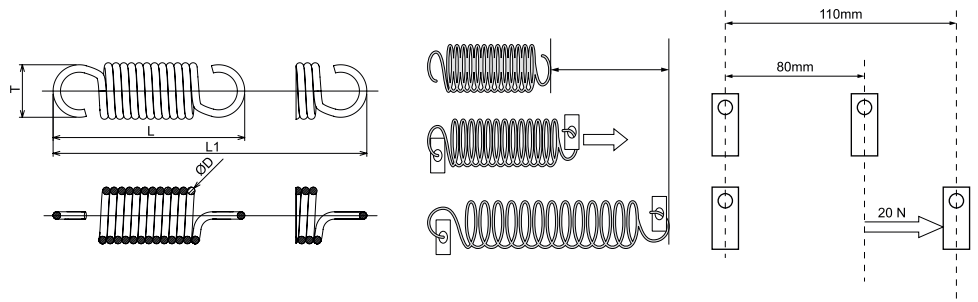
Code	Material	Weight
DKE28-23	Stainless steel	19 Gr

Type-D Ring Hanger



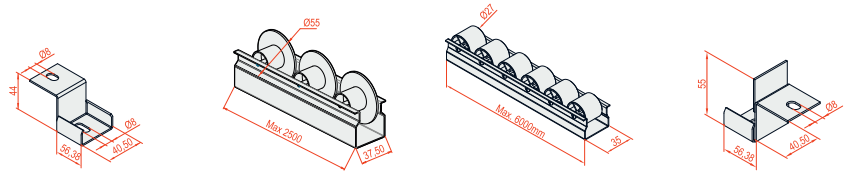
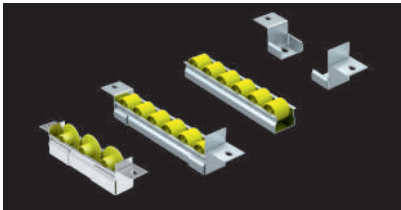
Code	Material	Weight
DKE28-22	Stainless steel	7 Gr

## Tension Spring



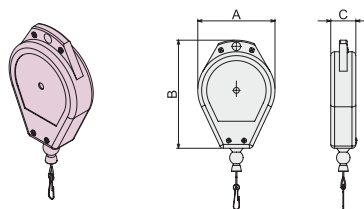
Code	Product	D	t	Wire Diameter (mm)	In Case of dynamic load		t ± t1	Initial Tension Force (N)	Spring Constant (N/mm)	Weight (g)	Material
					t1	Max load					
					(fmax. mm )	(N)					
DKY28-32LS	Light Load Tension Spring S	10	51	0.8	73.9	10.88	124.9	1.47	0.127	6	SWP-A
DKY28-32LM	Light Load Tension Spring M	14	70	1	128.5	14.67	198.5	1.8	0.1	16	
DKY28-32LL	Light Load Tension Spring L	16	106	1.2	192.2	21.85	298.2	2.88	0.099	32	
DKY28-33MS	Medium Load Tension Spring S	8	50	0.9	36.2	20.41	86.2	3.95	0.455	5	
DKY28-33MM	Medium Load Tension Spring M	12.5	75	1.2	75.3	28.96	150.3	4.93	0.319	17	
DKY28-33ML	Medium Load Tension Spring L	18	95	1.6	99.8	45.16	194.8	7.4	0.378	40	
DKY28-34HS	Heavy Load Tension Spring S	8	54	1	30.3	28.08	84.3	6.2	0.723	6	
DKY28-34HM	Heavy Load Tension Spring M	16	73	1.6	54	51.83	127	9.6	0.782	29	
DKY28-34HL	Heavy Load Tension Spring L	16	100	1.8	64	73.9	173.9	15.8	0.91	62	

## Roller Rail



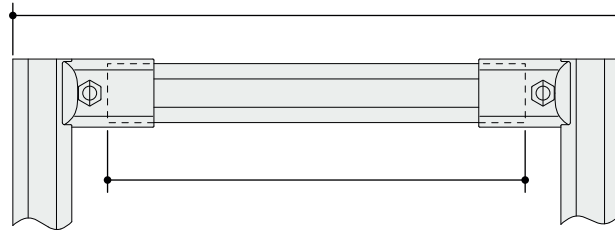
Code	Product	Material	Weight
<b>RR 37</b>	Roller Track 37 mm-Ø 27	Body DKP-Plastic Reel	959 Gr/Mt.
<b>RS 37</b>	Roller Track Side Support 37 mm-Ø 27	Body DKP-Plastic Reel	1000 Gr/Mt.
<b>RRSS 37</b>	Roller Track Bag Sheet Small 37 mm	DKP	90 Gr
<b>RRWS 89</b>	Roller Track Bag With Stopper 39x29x89 mm	DKP	100 Gr

## Retractable Spring



Code	A	B	C	Max Wire Length
<b>ING 100/06</b>	100	148	43	1.6 M
<b>ING 100/15</b>	100	148	43	1.6 M
<b>ING 114</b>	114	169	48	1.6 M

Code	Product	Material	Weight
<b>BRS 15</b>	Spring Balancer-Retractable Spring 0,6-1,5 kg	Spring Steel	600 Gr
<b>BRS 30</b>	Spring Balancer-Retractable Spring 1,5-3,0 kg	Spring Steel	600 Gr
<b>BRS 50</b>	Spring Balancer-Retractable Spring 3,0-5,0 kg	Spring Steel	850 Gr



Outer	Inner
<p>A: 287.00 L: 200.00 43.50 Section A-A 200.00 287.00</p> <p><math>L = A - (43,5 \times 2)</math></p>	<p>A: 286.00 L: 200.00 43.00 Section A-A 200.00 286.00</p> <p><math>L = A - (43 \times 2)</math></p>
<p>32.50 L: 150.00 A: 215.00 Section A-A SCALE 1:2.5 A</p> <p><math>L = A - (32,5 \times 2)</math></p>	<p>44.00 L: 150.00 A: 238.00 Section A-A SCALE 1:2.5 A</p> <p><math>L = A - (44 \times 2)</math></p>
<p>26.5 30.5</p>	<p>26.50 30.07</p>
<p>X: 151.50 Y: 151.50 L: 118.55 30.00 26.64 30.00</p> <p><math>L = \sqrt{(X-30)^2 + (Y-30)^2} - 26,64 \times 2</math></p>	<p>X: 151.35 Y: 151.26 L: 118.55 30.00 26.64 30.00</p> <p><math>L = \sqrt{(X-30)^2 + (Y-30)^2} - 26,5 \times 2</math></p>
<p>X: 150.99 Y: 150.99 L: 160 26.74 26.76</p> <p><math>L = \sqrt{(X^2 + X^2)} - 26,76 \times 2</math></p>	<p>X: 160.00 Y: 160.00 L: 160.246 21.91 21.91</p> <p><math>L = \sqrt{(X^2 + X^2)} - 21,91 \times 2</math></p>



MEIMARIDIS  
BROS



**TOOLS**  
**LAND**

## Παρατηρήσεις

- Στις παραπάνω τιμές δεν περιλαμβάνεται ο Φ.Π.Α.
- Τρόπος πληρωμής μετρητοίς
- Τα μεταφορικά επιβαρύνουν τον πελάτη
- Ο παρών τιμοκατάλογος καταργεί τον προηγούμενο
- Στα προφίλ δεν γίνονται επιστροφές
- Στα εξαρτήματα οι επιστροφές θα γίνονται κατόπιν συνεννόησης
- Χρόνος παράδοσης κατόπιν συνεννόησης
- Η εταιρία δεν φέρει καμία ευθύνη για τυχόν φθορές από την μεταφορά

### **ΑΡΙΘΜΟΣ ΛΟΓΑΡΙΑΣΜΟΥ ΤΡΑΠΕΖΑ ΠΕΙΡΑΙΩΣ:**

Αρ. λογ.: 5242 0035 75529

IBAN: GR 22017 22420 00524 20035 75529

## Σημειώσεις







ΕΜΠΟΡΙΑ ΣΙΔΗΡΟΥ - ΑΛΟΥΜΙΝΙΟΥ - ΓΥΨΟΣΑΝΙΔΑΣ - ΧΡΩΜΑΤΩΝ  
ΣΟΒΑΔΩΝ - ΙΝΟΧ ΠΑΝΤΟΣ ΤΥΠΟΥ - ΒΙΟΜΗΧΑΝΙΚΑ ΕΡΓΑΛΕΙΑ  
(ΣΤΡΑΝΤΖΑ - ΨΑΛΙΔΙ - ΚΥΛΙΝΔΡΟΣ - ΠΑΝΤΟΓΡΑΦΟΣ)

## ΑΦΟΙ ΜΕΪΜΑΡΙΔΗ Ο.Ε.

Σταδίου 97 - Βέροια

Τηλ.: 23310 23342 - 23178 / Fax: 23310 67869

[www.meimaridis.gr](http://www.meimaridis.gr) | [info@meimaridis.gr](mailto:info@meimaridis.gr)

**STANLEY**

**CAT**

**KNAUF**

**vitex**

**ALUMINCO**  
ALUMINIUM BUILDING SYSTEMS

**KRAFT**  
paints

**metabo**  
PROFESSIONAL POWER TOOL SOLUTIONS



# 2024

e-mail: [sales@aluminium-profile.gr](mailto:sales@aluminium-profile.gr)

[www.aluminium-profile.gr](http://www.aluminium-profile.gr)