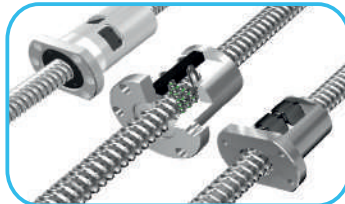


ΣΥΣΤΗΜΑΤΑ ΓΡΑΜΜΙΚΗΣ ΚΙΝΗΣΗΣ
LINEAR MOTION SYSTEMS
ACCESSORIES

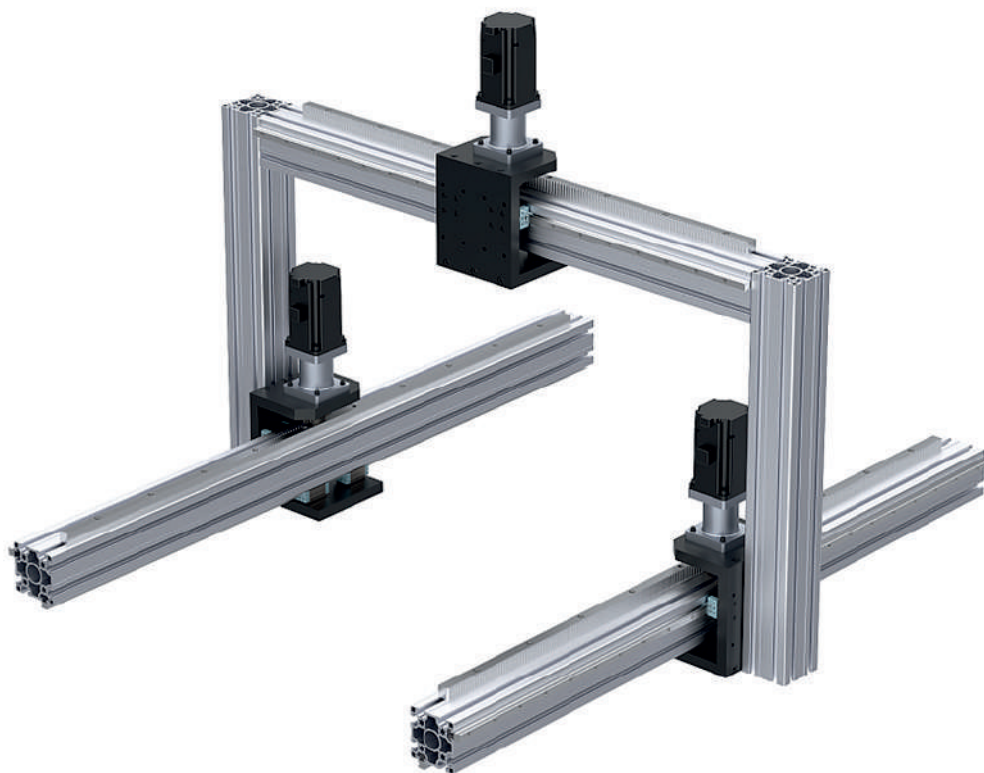
LINEAR BLOCKS AND RAILS



BALLSCREW AND NUTS



RACK AND PINIONS



SHAFT SUPPORT UNITS



LINEAR GUIDES



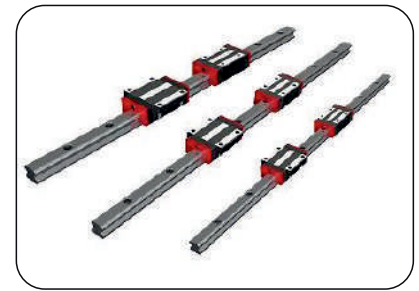
LINEAR BEARINGS & COUPLINGS



e-mail: sales@aluminium-profile.gr
www.aluminium-profile.gr

ΚΑΤΑΛΟΓΟΣ
2025

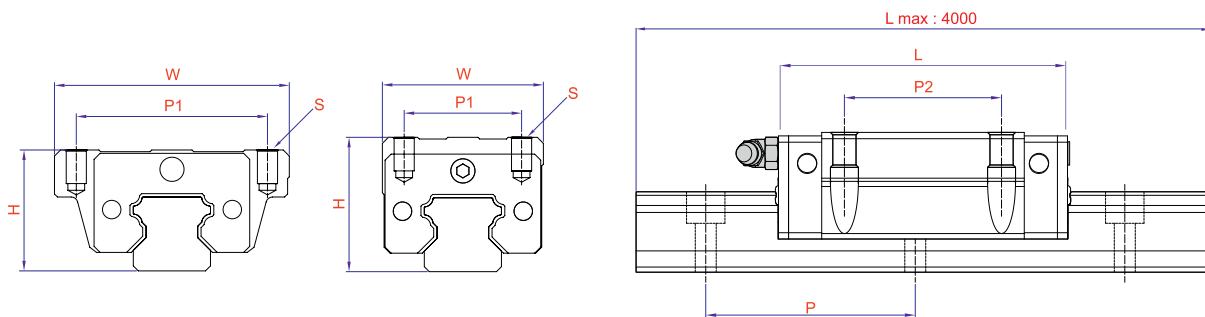
DMS®



LINEAR GUIDEWAYS AND BLOCKS

GHH / NARROW HIGH TYPE

GHW / WIDE TYPE

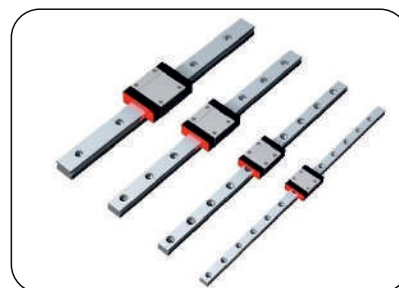


Mechanical Parts

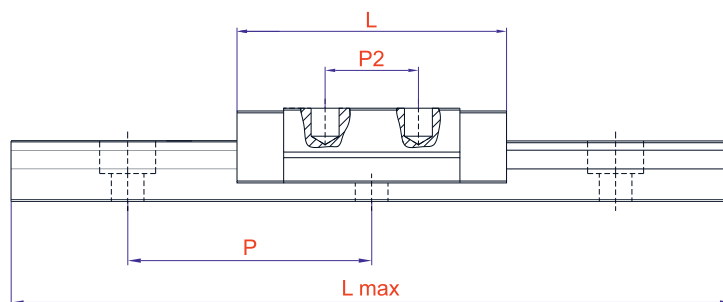
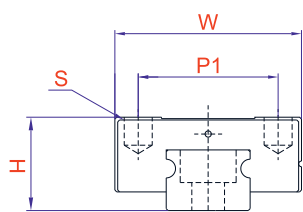
PRODUCT NAME	Type	H	P1	P2	P	L	S	W	Static Kg	Dynamic Kg	LINEAR BLOCK		LINEAR GUIDEWAY	
											ΚΩΔΙΚΟΣ		ΚΩΔΙΚΟΣ	
NARROW LINEAR BLOCK	GHH 15	28	26	26	60	61,4	M4	34	1697	1138	D 100		D 110	
WIDE LINEAR BLOCK	GHW 15	24	38	30	60	61,4	M5	47	1697	1138	D 101		GHR 15	
NARROW LINEAR BLOCK	GHH 20	30	32	36	60	77,5	M5	44	2776	1775	D 102		D 111	
WIDE LINEAR BLOCK	GHW 20	30	53	40	60	77,5	M6	63	2776	1775	D 103		GHR 20	
NARROW LINEAR BLOCK	GHH 25	40	35	35	60	84	M6	48	3649	2648	D 104		D 112	
WIDE LINEAR BLOCK	GHW 25	36	57	45	60	84	M8	70	3649	2648	D 105		GHR 25	
NARROW LINEAR BLOCK	GHH 30	45	40	40	80	97,4	M8	60	5219	3874	D 106		D 113	
WIDE LINEAR BLOCK	GHW 30	42	72	52	80	97,4	M10	90	5219	3874	D 107		GHR 30	
NARROW LINEAR BLOCK	GHH 35	55	50	50	80	112,4	M8	70	6916	4952	D 108		D 114	
WIDE LINEAR BLOCK	GHW 35	48	82	62	80	112,4	M10	100	6916	4952	D 109		GHR 35	
NARROW LINEAR BLOCK	GHH 45	70	60,5	60	60	139,4	M10	86	10271	7757	D 450		D 215	
WIDE LINEAR BLOCK	GHW 45	60	50,5	100	80	139,4	M12	120	10271	7757	D 460		GHR 45	

* The length of linear guideways is 4000 mm.

DMS[®]



MINIATURE LINEAR GUIDEWAY
MINIATURE LINEAR BLOCK



Mechanical Parts

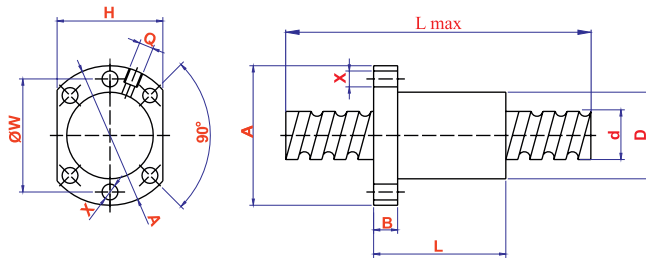
PRODUCT NAME	Type	H	P1	P2	P	L	S	W	Static Kg	Dynamic Kg
MINIATURE LINEAR BLOCK	DMN-07	8	12	8	15	22.5	M2x2.5	17	1.24	1.00
MINIATURE LINEAR BLOCK	DMN-09	10	15	10	20	28.9	M3x3	20	2.55	1.86
MINIATURE LINEAR BLOCK	DMN-12	13	20	15	25	34.7	M3x3.5	27	3.92	2.84
MINIATURE LINEAR BLOCK	DMN-15	16	25	20	40	42.1	M3x4	32	5.59	4.61

LINEAR BLOCK		LINEAR GUIDEWAY	
ΚΩΔΙΚΟΣ		ΚΩΔΙΚΟΣ	
D 115		D 119	
D 116		D 120	
D 117		D 121	
D 118		D 122	

- * Length max
DMN 07-700 mm ΠΩΛΕΙΤΑΙ ΟΛΟΚΛΗΡΗ Η ΒΕΡΓΑ
- DMN 09-1000 mm
- DMN 12-1600 mm
- DMN 15-1600 mm

FSU FLANGED NUT

DKM



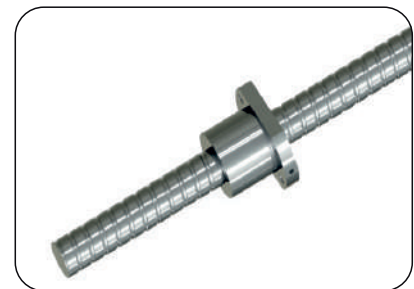
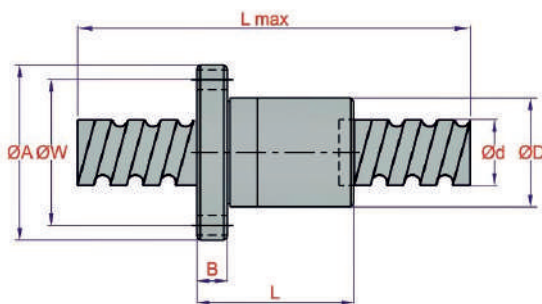
PRODUCT NAME	A	X	H	W	B	L	d	D	Q	Load Capacity	
										Ca (Kgf)	Coa (Kgf)
(DKM-1605 FSU) Ballscrew and Nut	48	5,5	40	38	10	43	16	28	M6	780	1790
(DKM-1610 FSU) Ballscrew and Nut	48	5,5	40	38	10	47	16	28	M6	721	1249
(DKM-2005 FSU) Ballscrew and Nut	58	6,6	44	47	10	43	20	36	M6	1100	2280
(DKM-2010 FSU) Ballscrew and Nut	58	6,6	44	47	10	43	20	36	M6	830	1680
(DKM-2505 FSU) Ballscrew and Nut	63	6,6	48	51	10	43	25	40	M6	1250	3070
(DKM-2510 FSU) Ballscrew and Nut	63	6,6	48	51	10	54	25	40	M6	1944	3877
(DKM-3205 FSU) Ballscrew and Nut	81	9	62	65	10	52	32	50	M6	1400	4080
(DKM-3210 FSU) Ballscrew and Nut	81	9	62	65	14	90	32	50	M6	3390	7170
(DKM-4010 FSU) Ballscrew and Nut	93	9	70	78	14	90	40	63	M6	3850	9470

FLANGED NUT		RIGHT-HAND THREAD BALLSCREW	
ΚΩΔΙΚΟΣ		ΚΩΔΙΚΟΣ	
FSU 1605		DKM 1605	
FSU 1610		DKM 1610	
FSU 2005		DKM 2005	
FSU 2010		DKM 2010	
FSU 2505		DKM 2505	
FSU 2510		DKM 2510	
FSU 3205		DKM 3205	
FSU 3210		DKM 3210	
FSU 4010		DKM 4010	

Mechanical Parts

* The length of L Max is 4000 mm & 6000 mm

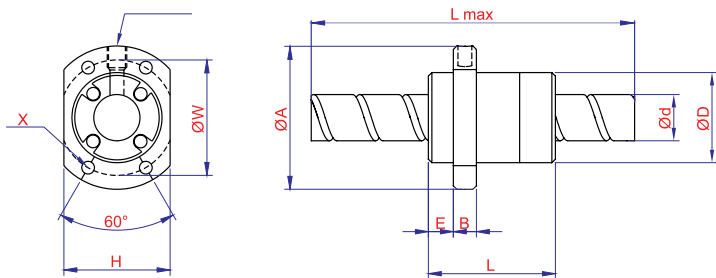
GTEN



PRODUCT NAME	A	X	H	W	B	L	d	D	Q	Load Capacity	
										Ca (Kgf)	Coa (Kgf)
BALLSCREW Φ 12-05							12			514	594
BALLSCREW Φ 12-10							12			390	596
BALLSCREW Φ 40-05							40			5399	10074
BALLSCREW Φ 63-20	135	13.5	100	115	20	138	63			8957	17945

RIGHT-HAND THREAD BALLSCREW	
ΚΩΔΙΚΟΣ	
R 1205-3	
R 1210-2	
R 4010-4	
R 6320-3	

DKM

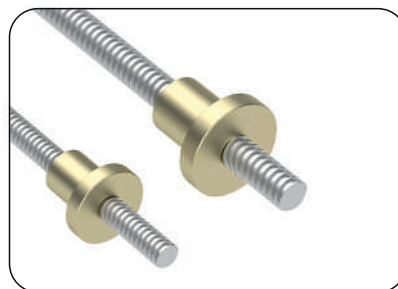
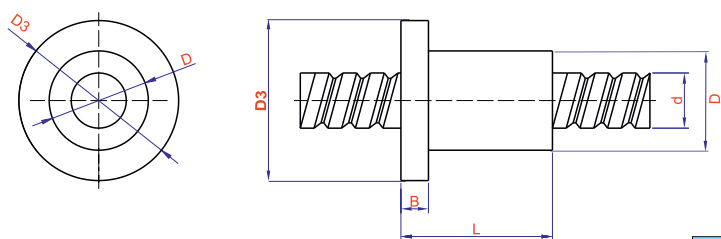


PRODUCT NAME	Type	Dimensions										Load Capacity	
		d	D	A	E	B	L	X	W	H	Ca	Coa	
Long Pitch Ballscrew and Nut	1616-3 SFE	16	32	53	10.5	10	45	4.5	42	34	650	1280	
Long Pitch Ballscrew and Nut	2020-3 SFE	20	39	62	12	10	55	5.5	50	41	980	2140	
Long Pitch Ballscrew and Nut	2525-3 SFE	25	47	74	13	12	57	6.6	60	49	1470	3350	
Long Pitch Ballscrew and Nut	3232-3 SFE	32	58	92	16	12	82	9	74	60	2140	5260	
Long Pitch Ballscrew and Nut	4040-3 SFE	40	73	114	19	15	100	11	93	75	3410	8820	

LONG PITCH FLANGED NUT		LONG PITCH BALLSCREW	
ΚΩΔΙΚΟΣ		ΚΩΔΙΚΟΣ	
SPE 16		LPB 16	
SPE 20		LPB 20	
SPE 25		LPB 25	
SPE 32		LPB 32	
SPE 40		LPB 40	

Mechanical Parts

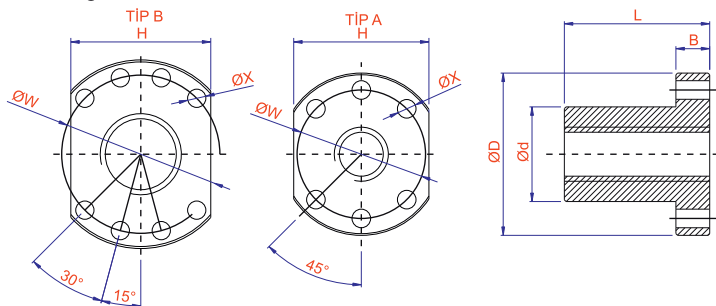
* The length of L Max is 6000 mm.



PRODUCT NAME	Type	D3	B	L	d	D
TRAPEZOIDAL Ballscrew	TR16-04	48	10	43	16	28
TRAPEZOIDAL Ballscrew	TR20-04	58	10	43	20	36
TRAPEZOIDAL Ballscrew	TR25-04	63	10	43	25	40
TRAPEZOIDAL Ballscrew	TR30-06	68	12	50	30	40
TRAPEZOIDAL Ballscrew	TR40-06	90	14	70	40	60

TRAPEZOIDAL NUT		TRAPEZOIDAL BALLSCREW	
ΚΩΔΙΚΟΣ		ΚΩΔΙΚΟΣ	
TRN 16		TR 16-04	
TRN 20		TR 20-04	
TRN 25		TR 25-05	
TRN 30		TR 30-06	
TRN 40		TR 40-06	

* The length of L Max is 3000 mm

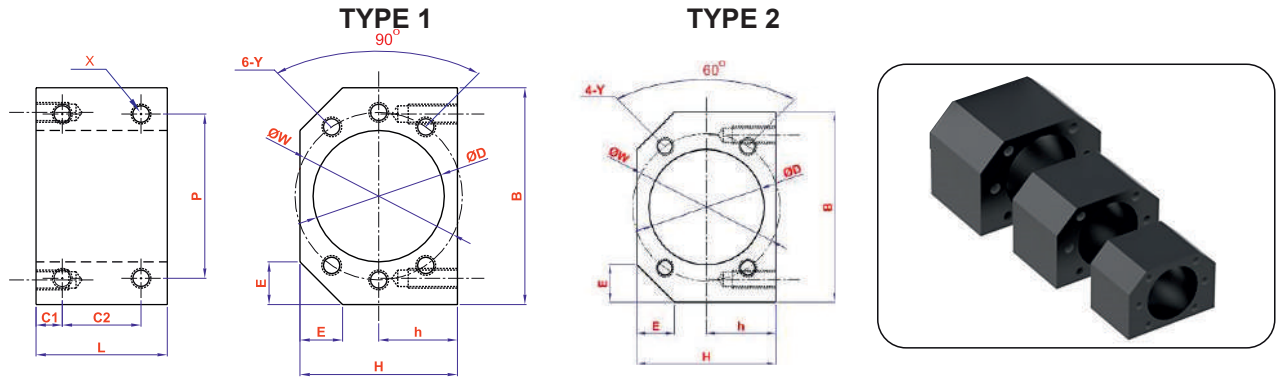


PRODUCT NAME	Type	Ød	ØD	L	B	X	W	H	TiP
Trapezoidal Flanged Nut Perforated	16-04 FSU	28	48	43	10	5,5	38	40	A
Trapezoidal Flanged Nut Perforated	20-04 FSU	36	58	43	10	6,5	47	44	A
Trapezoidal Flanged Nut Perforated	25-05 FSU	40	63	43	10	6,5	51	48	A
Trapezoidal Flanged Nut Perforated	30-06 FSU	40	68	50	12	6,5	52	53,5	A
Trapezoidal Flanged Nut Perforated	40-06 FSU	63	93	70	14	9	78	69	B

TRAPEZOIDAL BALLSCREW	
ΚΩΔΙΚΟΣ	
FSU 16-04	
FSU 20-04	
FSU 25-05	
FSU 30-06	
FSU 40-06	

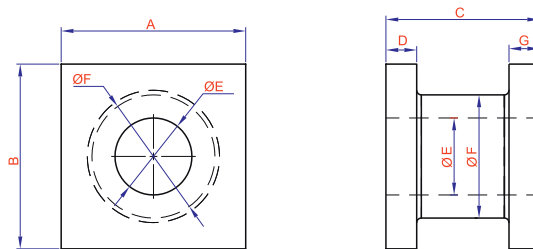
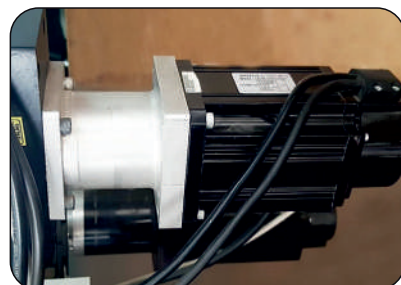
* The length of L Max is 3000 mm

FLANGED NUT HOUSING



ΚΩΔΙΚΟΣ	ΤΥΠΟΣ	NUT	Dimensions (mm)												
			ØD	B	H	h	E	L	C1	C2	P	X	W	Y	
H 1605	ΤΥΠΕ 1	1605	28	52	40	20	12	40	8	24	40	M5	38	M5	
H 2005	ΤΥΠΕ 1	2005-2010	36	62	44	22	12	40	8	24	48	M6	47	M6	
H 2505	ΤΥΠΕ 1	2505-2510	40	66	48	24	13	40	8	24	50	M6	51	M6	
H 3205	ΤΥΠΕ 1	3205-3210	50	86	62	31	17	40	8	24	66	M8	65	M8	
H 4005	ΤΥΠΕ 1	4005	63	100	70	35	17	45	7,5	30	92	M8	78	M8	
H 161	ΤΥΠΕ 2	1616	32	60	40	20	12	30	7,5	15	46	M5	42	M4	
H 202	ΤΥΠΕ 2	2020	39	70	44	22	12	40	7	26	56	M6	50	M5	
H 252	ΤΥΠΕ 2	2525	47	78	55	27,5	13	47	8	31	66	M6	60	M6	

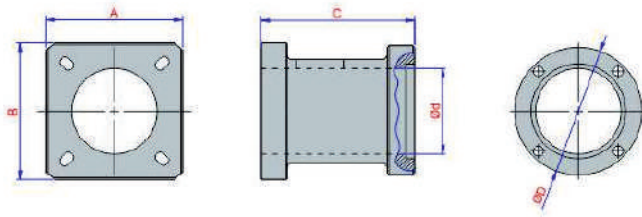
MOTOR CONNECTION FLANGES (With Hole & Without Hole)



Dimensions							
ΚΩΔΙΚΟΣ	A	B	C	D	G	E	F
MC 45	45	45	67	10	10	35	45
MC 60	60	60	73	12	12	35	55
MC 80	80	80	88	10	10	47	55
MC 85	85	85	90	15	15	47	60
MC 95	95	95	104	24	17	47	72
MC 120	120	120	100	20	20	50	80

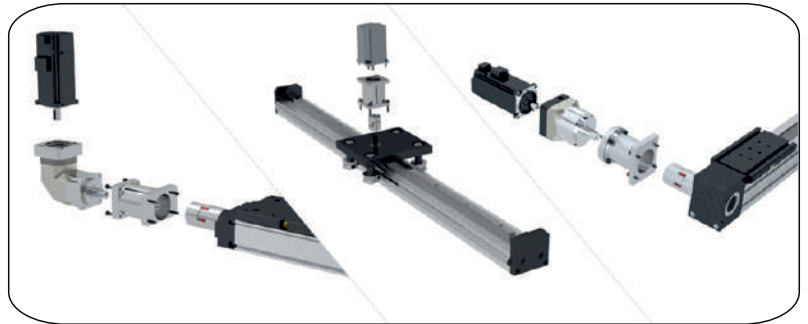
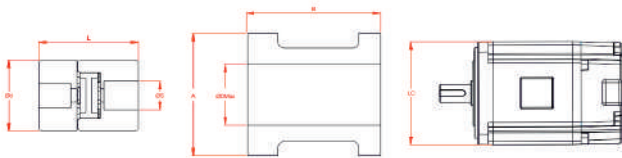
* The price of flange mounting does not include price of couplings.

Driven Flanges



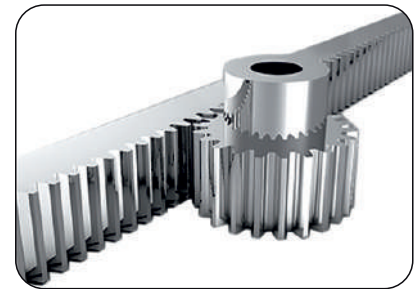
			Dimensions					
ΚΩΔΙΚΟΣ	REDUCER	MODULE	A	B	C	Ød	ØD	
DFP 70	PEC 70	64x64	65	80	84,5	47	70	
DFP 90	PEC 90	80x80-100x100	83	87	101,5	60	94	

Engine Coupling

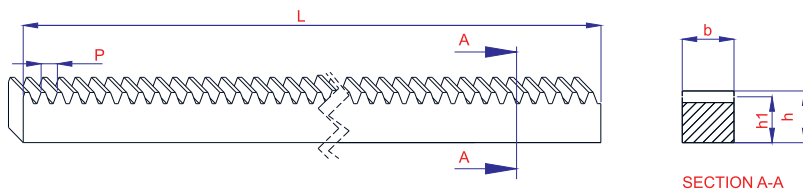


			Dimensions						
ΚΩΔΙΚΟΣ	FLANGE	COUPLING	A	B	L	Ød	ØDMax	ØS	
MEC 60	G60	JM 30	60	73	35	Ø30	47	5-16 mm	
MEC 80	G80	JM 40	80	88	66	Ø40	50	8-22 mm	
MEC 85	G85	JM 40	85	90	66	Ø40	50	5-22 mm	
MEC 95	G95	JM 40	95	104	66	Ø40	62	8-22 mm	
MEC 95/A	G95	JM 55	95	104	78	Ø55	62	8-28 mm	

Spur RACK AND PINION



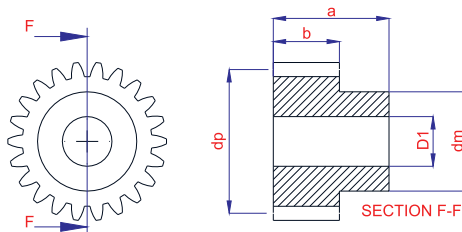
**ΡΑΓΑ ΧΩΡΙΣ ΤΡΥΠΕΣ
WITHOUT HOLES**



Dimensions of Rack and Pinion Gears						
ΚΩΔΙΚΟΣ	Type	L	p	b	h	h ₁
R 100	1	2000	3,14	15	15	14
R 150	1,5	2000	4,71	17	17	15,5
R 200	2	2000	6,28	20	20	18
R 250	2,5	2000	7,85	25	25	22,5
R 300	3	2000	9,42	30	30	27
R 400	4	2000	12,56	40	40	36

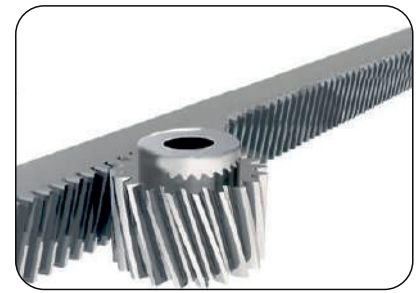
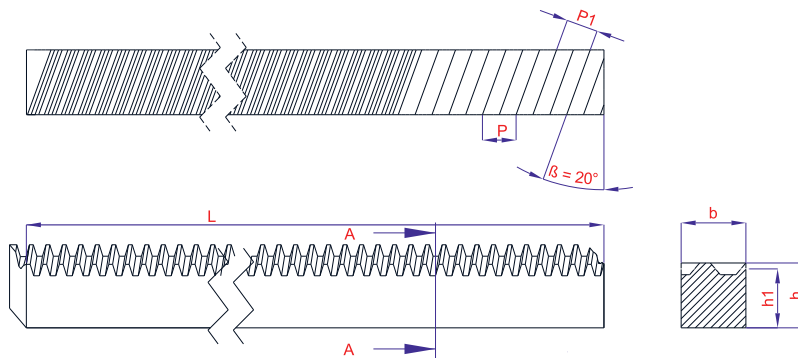
Mechanical Parts

PINION GEARS



Dimensions of Pinion Gears							
ΚΩΔΙΚΟΣ	Type	Number of gears (t)	a	b	dp	dm	D1
P 2225	1	22	25	15	22	16	8
P 2525	1	25	25	15	25	20	8
P 2230	1,5	22	30	17	33	25	10
P 2530	1,5	25	30	17	37,5	25	10
P 2235	2	22	35	20	44	30	12
P 2535	2	25	35	20	50	35	12
P 2240	2,5	22	40	25	55	45	14
P 2540	2,5	25	40	25	62,5	50	14
P 3022	3	22	50	30	66	50	15
P 3025	3	25	50	30	75	60	15
P 4022	4	22	60	40	88	70	20
P 4023	4	25	60	40	100	75	20

HELICAL RACK (RIGHT)



**ΡΑΓΑ ΧΩΡΙΣ ΤΡΥΠΕΣ
WITHOUT HOLES**

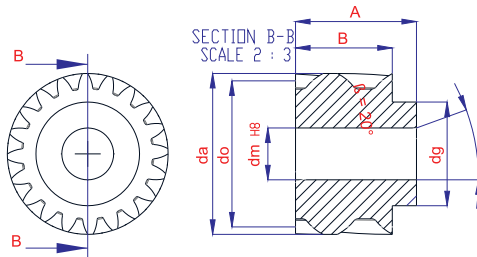
SECTION A-A

Mechanical Parts

Dimensions of Helical Rack and Pinion (RIGHT)

ΚΩΔΙΚΟΣ	Type	L	p	p1	b	h	h1
H 100	1	2000	3.343	3.142	15	15	14
H 150	1,5	2000	5.015	4.712	17	17	15,5
H 200	2	2000	6.686	6.283	20	20	18
H 250	2,5	2000	8.358	7.854	25	25	22,5
H 300	3	2000	10.029	9.425	30	30	27
H 400	4	2000	13.372	12.566	40	40	36

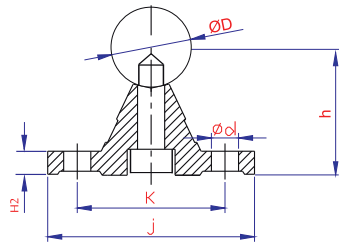
HELICAL PINION GEARS (RIGHT)



Dimensions of Helical Pinion Gears (RIGHT)

ΚΩΔΙΚΟΣ	Type	Number of gears (t)	A	B	da	do	dm	dg
HP 2225	1	22	25	15	25.4	23.41	8	20
HP 2425	1	24	25	15	27.5	25.5	8	22
HP 2525	1	25	25	15	28.6	26.60	8	23
HP 2230	1,5	22	30	17	38.1	35.12	10	29
HP 2430	1,5	24	30	17	41.3	38.31	10	33
HP 2530	1,5	25	30	17	42.9	39.91	10	34
HP 2235	2	22	35	20	50.8	46.82	12	39
HP 2435	2	24	35	20	55.1	51.08	12	43
HP 2535	2	25	35	20	57.2	53.21	12	46
HP 2240	2,5	22	40	25	63.5	58.53	14	49
HP 2440	2,5	24	40	25	68.9	63.85	14	55
HP 2540	2,5	25	40	25	71.5	66.51	14	57
HP 2250	3	22	50	30	76.2	70.24	12	60
HP 2450	3	24	50	30	82.6	76.62	12	66
HP 2550	3	25	50	30	85.8	79.81	12	69
HP 2260	4	22	60	40	101.6	93.65	14	80
HP 2460	4	24	60	40	110.2	102.16	16	89
HP 2560	4	25	60	40	114.4	106.42	16	93

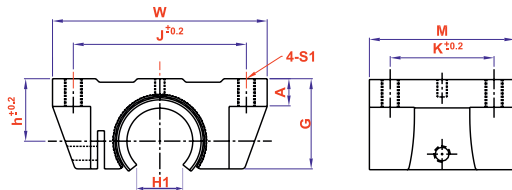
LINEAR SHAFT + SHAFT SUPPORT PROFILE (SET)



Dimensions (mm)										
ΚΩΔΙΚΟΣ	H2	ØD	Ød	h	J	K	Lmax	C1	C2	Weight (kg/Mt)
170-12	5	Ø12	Ø5	22	40	29	6000	50	75	1,571
170-16	5	Ø16	Ø5.5	26	45	33	6000	50	100	2,422
170-20	5,8	Ø20	Ø6.6	32	52	37	6000	50	100	3,701
170-25	6	Ø25	Ø6.6	36	57	42	6000	60	120	5,296
170-30	7	Ø30	Ø9	42	69	51	6000	70	150	7,561
170-40	8	Ø40	Ø9	50	73	55	6000	100	200	11,917

Mechanical Parts

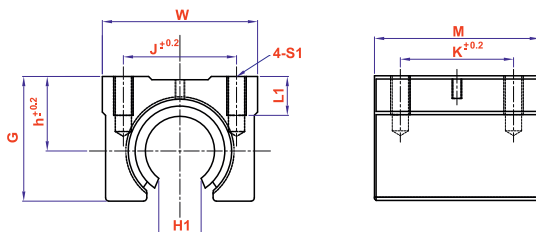
(OPEN) CAGED BEARINGS



TBR

ΚΩΔΙΚΟΣ	Type	Dimensions (mm)									Load Capacity		Weight (g)
		W	G	A	M	S1	J	K	h	H1	Dynamic	Static	
TBR 16UU	TBR 16	62	26	8	42	M5	50	30	18	11	392	490	0.18
TBR 20UU	TBR 20	68	31	10	51	M6	54	34	21	12.5	784	1176	0.30
TBR 25UU	TBR 25	82	41	10	65	M8	65	50	28	13	1568	2352	0.60
TBR 30UU	TBR 30	91	48	12	75	M8	75	60	33.5	15.5	1764	2940	0.90

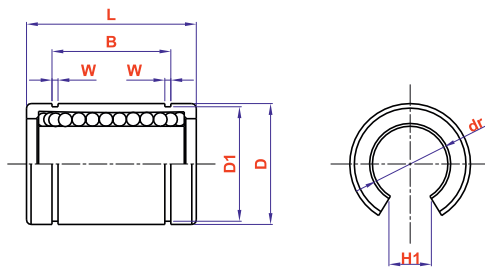
(OPEN) CAGED BEARINGS



SBR

ΚΩΔΙΚΟΣ	Type	Dimensions (mm)									Load Capacity		Weight (g)
		W	G	L1	M	S1	J	K	h	H1	Dynamic	Static	
SBR 12UU	SBR 12	40	27,6	10	39	M5	28	26	17	7.5	510	784	100
SBR 16UU	SBR 16	45	33	10	45	M5	32	30	20	11	774	1180	150
SBR 20UU	SBR 20	48	39	12	50	M6	35	35	23	12.5	882	1370	200
SBR 25UU	SBR 25	60	47	13	65	M6	40	40	27	13	980	1570	450
SBR 30UU	SBR 30	70	56	16	70	M8	50	50	33	15.5	1570	2740	630
SBR 40UU	SBR 40	90	72	20	90	M10	65	65	42	21	2160	4020	1330

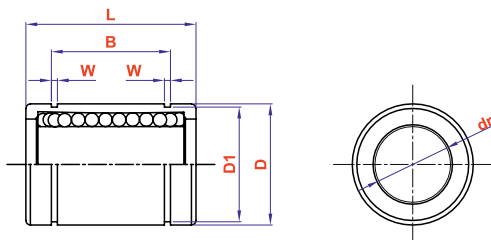
LME UUOP SERIE (OPEN)



Mechanical Parts

ΚΩΔΙΚΟΣ	Ball Row Quantity	Dimensions (mm)							Load Capacity	
		d	D	L	B	W	D1	H1	Dynamic	Static
LME 12 UUOP	4	12	22	32	22.9	1.3	21	7.5	510	784
LME 16 UUOP	4	16	26	36	24.9	1.3	24.9	11	578	892
LME 20 UUOP	4	20	32	45	31.5	1.6	30.3	12.5	862	1370
LME 25 UUOP	5	25	40	58	44.1	1.85	37.5	13	980	1570
LME 30 UUOP	5	30	47	68	52.1	1.85	44.5	15.5	1570	2740
LME 40 UUOP	5	40	62	80	60.6	2.15	59	21	2160	4020

LME UU SERIES (CLOSED)



ΚΩΔΙΚΟΣ	Ball Row Quantity	Dimensions (mm)							Load Capacity	
		d	D	L	B	W	D1	Dynamic	Static	
LME 8 UU	4	8	16	25	16.5	1.1	15.2	372	549	
LME 12 UU	4	12	22	32	22.9	1.3	21	510	784	
LME 16 UU	5	16	26	36	24.9	1.3	24.9	578	892	
LME 20 UU	5	20	32	45	31.5	1.3	30.3	862	1370	
LME 25 UU	6	25	40	58	44.1	1.85	37.5	980	1570	
LME 30 UU	6	30	47	68	52.1	1.85	44.5	1570	2740	
LME 40 UU	6	40	62	80	60.6	2.15	59	2160	4020	

PRECISION CHROMED HARDENED INDUCTION SHAFTS



ΚΩΔΙΚΟΣ	PRODUCT NAME			
W4-WWL	Ø 4 HARDENED INDUCTION SHAFT (CHROMED)			
W6-WWL	Ø 6 HARDENED INDUCTION SHAFT (CHROMED)			
W8-WWL	Ø 8 HARDENED INDUCTION SHAFT (CHROMED)			
W10-WWL	Ø 10 HARDENED INDUCTION SHAFT (CHROMED)			
W12-WWL	Ø 12 HARDENED INDUCTION SHAFT (CHROMED)			
W16-WWL	Ø 16 HARDENED INDUCTION SHAFT (CHROMED)			
W20-WWL	Ø 20 HARDENED INDUCTION SHAFT (CHROMED)			
W25-WWL	Ø 25 HARDENED INDUCTION SHAFT (CHROMED)			
W30-WWL	Ø 30 HARDENED INDUCTION SHAFT (CHROMED)			
W40-WWL	Ø 40 HARDENED INDUCTION SHAFT (CHROMED)			

WWL



QUALITY CF 53

Ø 6 LENGTH 3100 mm

Ø 4 QUALITY CK 45, LENGTH 4000 mm

Chromed hardened induction shafts ARE produced against corrosion to resist.

Cf53 Induction hardened HRC 62 (+/-2) Surface Hardness 0.4 - 2.2 mm ISO h7

PRECISION CHROMED HARDENED INDUCTION SHAFT (WITH HOLES)

ΚΩΔΙΚΟΣ	PRODUCT NAME			
W12-WWL-DEL	Ø 12 HARDENED INDUCTION SHAFTS WITH HOLES (CHROMED)			
W16-WWL-DEL	Ø 16 HARDENED INDUCTION SHAFTS WITH HOLES (CHROMED)			
W20-WWL-DEL	Ø 20 HARDENED INDUCTION SHAFTS WITH HOLES (CHROMED)			
W25-WWL-DEL	Ø 25 HARDENED INDUCTION SHAFTS WITH HOLES (CHROMED)			
W30-WWL-DEL	Ø 30 HARDENED INDUCTION SHAFTS WITH HOLES (CHROMED)			
W40-WWL-DEL	Ø 40 HARDENED INDUCTION SHAFTS WITH HOLES (CHROMED)			

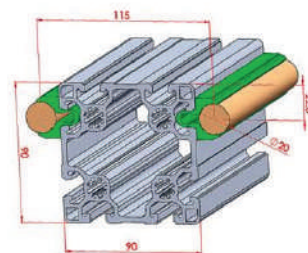
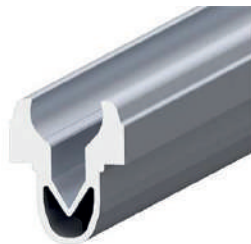
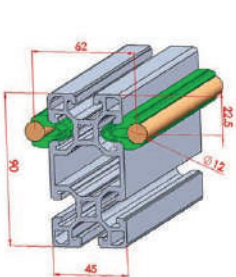
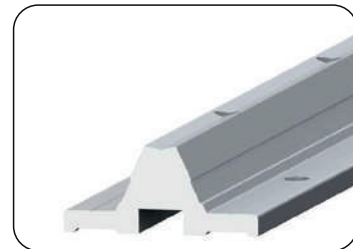
WWL-DEL



CF 53 DIA Induction hardened chromed HRC 62 (+/- 2) Surface Hardness 0,4-2,2 mm ISO h7

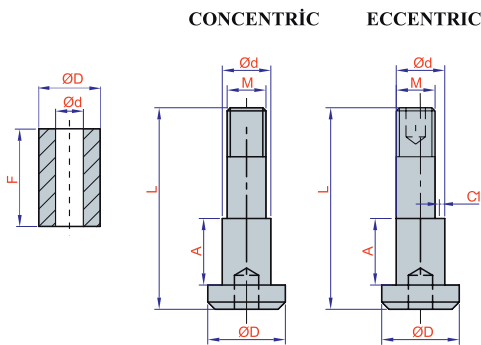
SHAFT SUPPORT PROFILE (WITH HOLES)

ΚΩΔΙΚΟΣ	PRODUCT NAME			
MDP 12	Ø 12 SHAFT SUPPORT PROFILE WITH HOLES			
MDP 16	Ø 16 SHAFT SUPPORT PROFILE WITH HOLES			
MDP 20	Ø 20 SHAFT SUPPORT PROFILE WITH HOLES			
MDP 25	Ø 25 SHAFT SUPPORT PROFILE WITH HOLES			
MDP 30	Ø 30 SHAFT SUPPORT PROFILE WITH HOLES			
MDP 40	Ø 40 SHAFT SUPPORT PROFILE WITH HOLES			



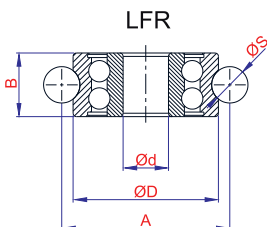
ΚΩΔΙΚΟΣ	PRODUCT NAME
M 008	Ø 12 CLUMPING PROFILE

ΚΩΔΙΚΟΣ	PRODUCT NAME
M 009	Ø 20 CLUMPING PROFILE



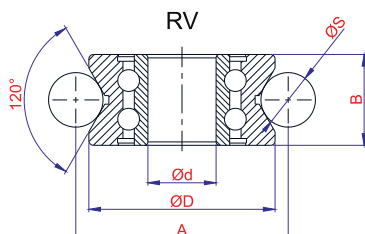
STUDS FOR BEARINGS

DIMENSIONS OF STUDS FOR BEARINGS									
CODE OF BEARING	STUDS TYPES	ΚΩΔΙΚΟΣ	M	Ød	A	L	C1	ØD	F
LFR 50/5-4 KDD	CONCENTRIC	LFR 50/CON 0,5	M4	Ø5	7	20,5	0,5	8	0,5
	ECCENTRIC	LFR 50/ECC 0,5							
LFR 50/8-6 KDD	CONCENTRIC	LFR 50/CON 2	M6	Ø8	10	30	1	14	2
	ECCENTRIC	LFR 50/ECC 2							
	CONCENTRIC	LFR 50/CON 4	M6	Ø8	14	32	1	12	4
	ECCENTRIC	LFR 50/ECC 4							
RV 200/8 KDD	CONCENTRIC	RV 200/CON 4,5	M8	Ø10	14	41,5	1	16	4,5
	ECCENTRIC	RV 200/ECC 4,5							
LFR 5201-10 KDD RV 201/12.35-16 KDD	CONCENTRIC	LFR 5201/CON 8,5	M10	Ø12	24	49,4	1	18,5	8,5
	ECCENTRIC	LFR 5201/ECC 8,5							
RV 201/12.35-16 KDD	CONCENTRIC	RV 201/CON 10,1	M10	Ø12	25,5	51	1	18,5	10,1
	ECCENTRIC	RV 201/ECC 10,1							
	CONCENTRIC	RV 201/CON 22,6	M10	Ø12	38	63	1	17,5	22,6
	ECCENTRIC	RV 201/ECC 22,6							
	CONCENTRIC	RV 201/CON 25	M10	Ø12	40,5	66	1	17,5	25
	ECCENTRIC	RV 201/ECC 25							
RV 202 / 15.40.20 KDD	CONCENTRIC	RV 202/CON 14	M12	Ø15	33,5	60	1,5	19,5	14
	ECCENTRIC	RV 202/ECC 14							
	CONCENTRIC	RV 202/CON 18	M12	Ø15	37,5	64	1,5	19,5	18
	ECCENTRIC	RV 202/ECC 18							
	CONCENTRIC	RV 202/CON 22,5	M12	Ø15	42	68	1,5	19,5	22,5
	ECCENTRIC	RV 202/ECC 22,5							
	CONCENTRIC	RV 202/CON 28	M12	Ø15	47,5	74	1,5	19,5	28
	ECCENTRIC	RV 202/ECC 28							
	CONCENTRIC	RV 202/CON 8	M12	Ø15	27,5	54	1,5	19,5	8
	ECCENTRIC	RV 202/ECC 8							
RV 203 / 17 KDD	CONCENTRIC	RV 203/CON 22	M14	Ø17	46	78	1,5	26	22
	ECCENTRIC	RV 203/ECC 22							



BEARINGS (LFR)

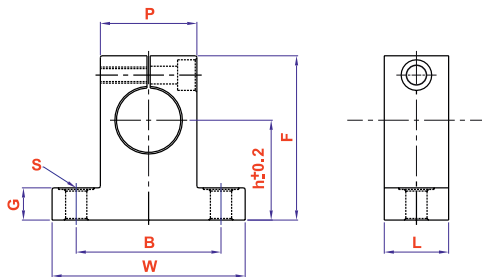
ΚΩΔΙΚΟΣ	LFR Type	PRODUCT NAME	S	A	B	D	d
LFR 4	LFR 50/5-4 KDD	Bearings with Plastic Cap	4	18	8	16	5
LFR 6	LFR 50/8-6 KDD	Bearings with Steel Cap	6	28	11	24	8



BEARINGS (RV)

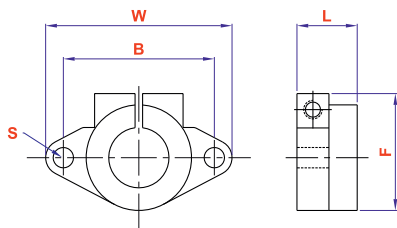
ΚΩΔΙΚΟΣ	RV Type	PRODUCT NAME	S	A	B	D	d
RV 8	RV 200/8 KDD	Bearings with Steel Cap	8	37	14	32	10
RV 12	RV 201/12 KDD	Bearings with Steel Cap	12	43,4	15,8	35	12
RV 2015	RV 202/15 KDD	Bearings with Steel Cap	20	55,8	20	41	15
RV 2017	RV 203/17 KDD	Bearings with Steel Cap	20	70	25	58	17

SK SHAFT END CONNECTION PART



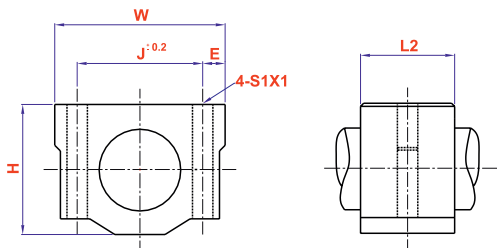
ΚΩΔΙΚΟΣ	Type	Dimensions (mm)								Key Position Bolt	Connection Bolt	Weight (g)
		h	W	L	F	G	P	B	S			
SK 8	SK 8	20	42	14	32.80	6	18	32	5.5	M4	M5	24
SK 10	SK 10	20	42	14	32.80	6	18	32	5.5	M4	M5	24
SK 12	SK 12	23	42	14	37.5	6	20	32	5.5	M4	M5	30
SK 16	SK 16	27	48	16	44	8	25	38	5.5	M4	M5	40
SK 20	SK 20	31	60	20	50	10	30	45	6.6	M5	M6	70
SK 25	SK 25	35	70	24	60	12	38	56	6.6	M6	M6	130
SK 30	SK 30	42	84	28	70	12	44	64	9	M6	M8	180
SK 40	SK 40	60	114	36	96	15	60	90	11	M8	M10	420

SHF SHAFT END CONNECTION PART



ΚΩΔΙΚΟΣ	Type	Dimensions (mm)					Tightening Hole	Connection Hole	Weight (g)
		W	L	F	B	S			
SHF 8	SHF 8	43	10	24	32	5.5	M4	M5	13
SHF 10	SHF 10	43	10	24	32	5.5	M4	M5	13
SHF 12	SHF 12	47	13	28	36	5.5	M4	M5	20
SHF 16	SHF 16	50	16	31	40	5.5	M4	M5	27
SHF 20	SHF 20	60	20	37	48	7	M5	M6	40
SHF 25	SHF 25	70	25	42	56	7	M5	M6	60
SHF 30	SHF 30	80	30	50	64	9	M6	M8	110
SHF 40	SHF 40	102	40	67	80	12.5	M10	M12	260

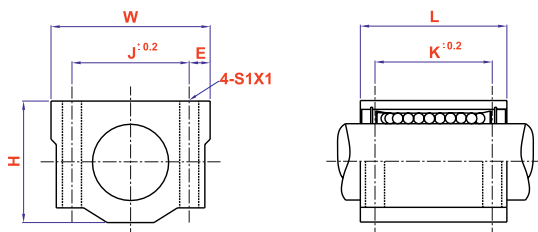
CAGED BEARINGS (CLOSED)



SCE-VUU

ΚΩΔΙΚΟΣ	Type	Dimensions (mm)						Basic Load Evaluation		Weight (g)	SCE--VUU	
		W	H	A	J	E	S1X1	Dynamic	Static		L2	
SCE 16 VUU	SCE 16 VUU	50	38.5	9	36	7	M5x12	770	1170	180	23.6	
SCE 20 VUU	SCE 20 VUU	54	41	11	40	7	M6x12	860	1370	245	28.3	
SCE 25 VUU	SCE 25 VUU	76	51.5	12	54	11	M8x18	980	1560	550	38	
SCE 30 VUU	SCE 30 VUU	78	60	15	58	10	M8x18	1560	2740	760	41	
SCE 40 VUU	SCE 40 VUU	102	78	20	80	11	M10x25	2150	4010	1.700	56.4	

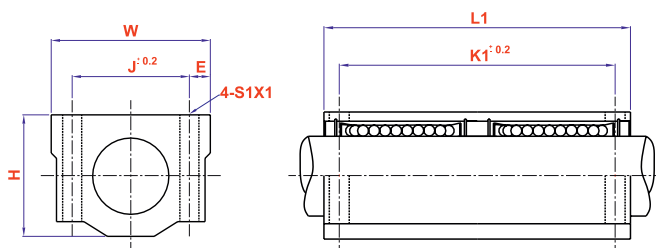
CAGED BEARINGS (CLOSED)



SCE-UU

ΚΩΔΙΚΟΣ	MODEL	Dimensions (mm)					Load Capacity		Weight (g)	SCE--UU	
		W	H	J	E	S1X1	Dynamic	Static		K	L
SCE 08 UU	SCE 08 UU	34	22	24	5	M4x8	274	392	52	18	30
SCE 12 UU	SCE 40 UU	42	28	30,5	5,7	M5x12	510	784	102	86	36
SCE 16 UU	SCE 16 UU	50	38.5	36	7	M5x12	774	1180	200	34	44
SCE 20 UU	SCE 20 UU	54	41	40	7	M6x12	882	1370	255	40	50
SCE 25 UU	SCE 25 UU	76	51.5	54	11	M8x18	980	1570	600	50	67
SCE 30 UU	SCE 30 UU	78	60	58	10	M8x18	1570	2740	735	58	72
SCE 40 UU	SCE 40 UU	102	78	80	11	M10x25	2160	4020	1.590	60	90

CAGED BEARINGS (CLOSED)



SCE-LUU

ΚΩΔΙΚΟΣ	Type	Dimensions (mm)					Load Capacity		Weight (g)	SCE--LUU	
		W	H	J	E	S1X1	Dynamic	Static		K1	L1
SCE 16 LUU	SCE 16 LUU	50	38.5	36	7	M5x12	774	1.180	376	60	85
SCE 20 LUU	SCE 20 LUU	54	41	40	7	M6x12	882	1.370	476	70	96
SCE 25 LUU	SCE 25 LUU	76	51.5	54	11	M8x18	980	1.570	1.115	100	130
SCE 30 LUU	SCE 30 LUU	78	60	58	10	M8x18	1.570	2.740	1.375	110	140
SCE 40 LUU	SCE 40 LUU	102	78	80	11	M10x25	2.160	4.020	3.200	140	175

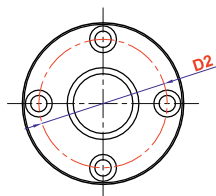
SQUARE LONG



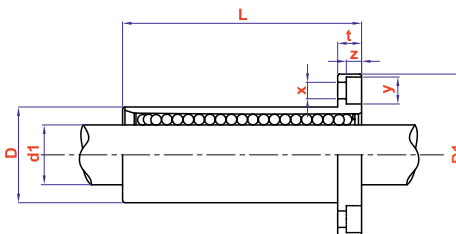
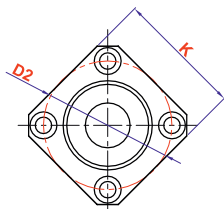
ROUND LONG



LMEF - LUU



LMEK - LUU



ΚΩΔΙΚΟΣ	Type	Dimensions (mm)										Load Capacity	
		d1	D	L	D1	K	t	D2	x	y	z	Dynamic	Static
LMEF 16 LUU	LMEF 16 LUU	16	26	68	46	-	6	36	4.5	7.5	4.1	912	1.780
LMEF 20 LUU	LMEF 20 LUU	20	32	80	54	-	8	43	5.5	9	5.1	1.370	2.740
LMEF 25 LUU	LMEF 25 LUU	25	40	112	62	-	8	51	5.5	9	5.1	1.570	3.140
LMEF 30 LUU	LMEF 30 LUU	30	47	123	76	-	10	62	6.6	11	6.1	2.500	5.490
LMEF 40 LUU	LMEF 40 LUU	40	62	151	98	-	13	80	9	14	8.1	3.430	8.040
LMEK 16 LUU	LMEK 16 LUU	16	26	68	46	35	6	36	4.5	7.5	4.1	912	1.780
LMEK 20 LUU	LMEK 20 LUU	20	32	80	54	42	8	43	5.5	9	5.1	1.370	2.740
LMEK 25 LUU	LMEK 25 LUU	25	40	112	62	50	8	51	5.5	9	5.1	1.570	3.140
LMEK 30 LUU	LMEK 30 LUU	30	47	123	76	60	10	62	6.6	11	6.1	2.500	5.490
LMEK 40 LUU	LMEK 40 LUU	40	62	151	98	75	13	80	9	14	8.1	3.430	8.040

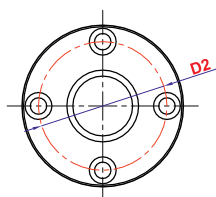
SQUARE SHORT



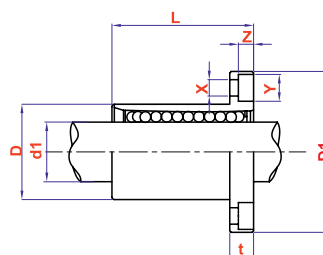
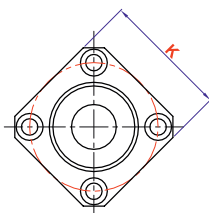
ROUND SHORT



LMEF - UU

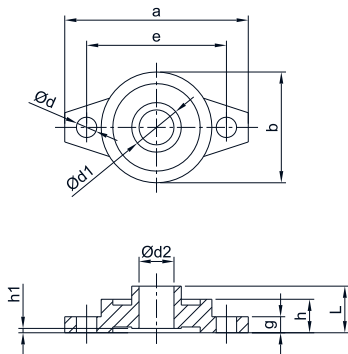


LMEK - UU



ΚΩΔΙΚΟΣ	Type	Dimensions (mm)										Load Capacity	
		d1	D	L	D1	K	t	D2	x	y	z	Dynamic	Static
LMEF 12 UU	LMEF 12 UU	12	22	32	42	-	6	32	4.5	8	4	500	700
LMEF 16 UU	LMEF 16 UU	16	26	36	46	-	6	36	4.5	8	4	570	890
LMEF 20 UU	LMEF 20 UU	20	32	45	54	-	8	43	5.5	9.5	5.5	860	1370
LMEF 25 UU	LMEF 25 UU	25	40	58	62	-	8	51	5.5	9.5	5.5	980	1560
LMEF 30 UU	LMEF 30 UU	30	47	68	76	-	10	62	6.6	11	6.5	1560	2740
LMEF 40 UU	LMEF 40 UU	40	62	80	98	-	13	80	9	14	8.5	2150	4010
LMEK 16 UU	LMEK 16 UU	16	26	36	46	35	6	36	4.5	8	4	570	890
LMEK 20 UU	LMEK 20 UU	20	32	45	54	42	8	43	5.5	9.5	5.5	860	1370
LMEK 25 UU	LMEK 25 UU	25	40	58	62	50	8	51	5.5	9.5	4.5	980	1560
LMEK 30 UU	LMEK 30 UU	30	47	68	76	60	10	62	6.6	11	6.5	1560	2740
LMEK 40 UU	LMEK 40 UU	40	62	80	98	75	13	80	9	14	8.5	2150	4010

PILLOW BEARING (CASTING)

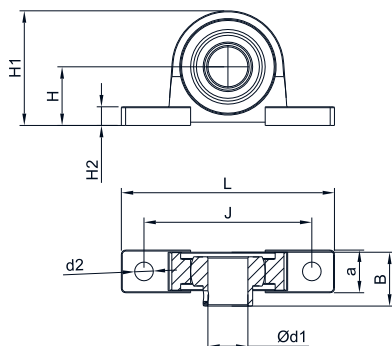


UFL

UFL Bearing (Casting)

ΚΩΔΙΚΟΣ	Type	PRODUCT NAME	a	e	b	d	d1	d2	g	L	h	h1	kg
UFL 000	UFL 000	Ø10 BEARING	60	45	36	7	14	10	5,5	15,5	11,5	0,5	0,1
UFL 001	UFL 001	Ø12 BEARING	63	48	38	7	17	12	5,5	16	11,5	1,5	0,1
UFL 002	UFL 002	Ø 15 BEARING	67	53	42	7	20	15	6,5	17,5	13,5	1	0,1
UFL 003	UFL 003	Ø 17 BEARING	71	56	46	7	23	17	7	18,5	14	1	0,2
UFL 004	UFL 004	Ø 20 BEARING	90	71	56	10	27	20	8	22	16	1	0,2
UFL 005	UFL 005	Ø 25 BEARING	95	75	60	10	32	25	8	23,5	16	1	0,2
UFL 006	UFL 006	Ø 30 BEARING	112	85	70	13	39	30	9	25,5	18	1	0,3
UFL 007	UFL 007	Ø 35 BEARING	122	95	80	14	43	35	10	29,5	20	1	0,42

PILLOW BEARING (CASTING)

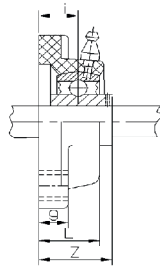
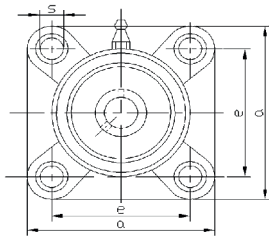


UP

UP Bearing (Casting)

ΚΩΔΙΚΟΣ	Type	PRODUCT NAME	d1	d2	H	H1	H2	L	J	a	B
UP 00	UP 00	Ø10 BEARING	10	6,8	18	35,2	6	67	53	16	15
UP 01	UP 01	Ø12 BEARING	12	6,8	19	38	6,2	71	50	16	16
UP 02	UP 02	Ø 15 BEARING	15	6,8	22	43	6,9	80	63	16	16,5
UP 03	UP 03	Ø 17 BEARING	17	6,8	24	46,9	7	85	67	18	17,5
UP 04	UP 04	Ø 20 BEARING	20	10	28	54,5	9,3	100	80	20	21
UP 05	UP 05	Ø 25 BEARING	25	10	32	62	10	112	90	20	22,5
UP 06	UP 06	Ø 30 BEARING	30	13	36	70	11	132	105,5	26	24,5

PILLOW BEARING (CASTING)

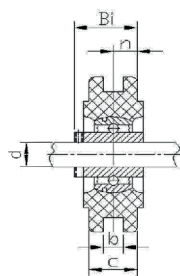
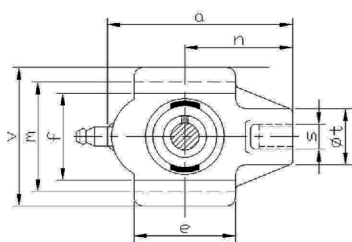


UCF

UCF Bearing (Casting)

ΚΩΔΙΚΟΣ	Type	PRODUCT NAME	Z	A	E	L	G	i	S	De
UCF 201	UCF 201	Ø 12 BEARING	33,3	86	64	25,5	11	15	12	M10
UCF 202	UCF 202	Ø 15 BEARING	33,3	86	64	25,5	11	15	12	M10
UCF 203	UCF 203	Ø 17 BEARING	33,3	86	64	25,5	11	15	12	M10
UCF 204	UCF 204	Ø 20 BEARING	33,3	86	64	25,5	11	15	12	M10
UCF 205	UCF 205	Ø 25 BEARING	35,7	95	70	27	13	16	12	M10
UCF 207	UCF 207	Ø 35 BEARING	44,4	117	92	34	15	19	14	M12
UCF 208	UCF 208	Ø40 BEARING	51,2	130	102	36	15	21	16	M14

PILLOW STAINLESS BEARING (PLASTIC)

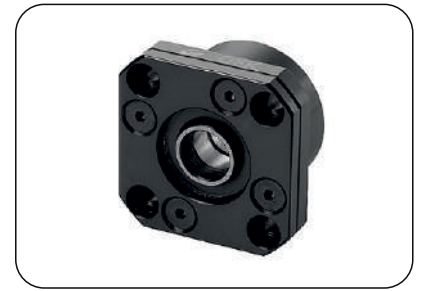
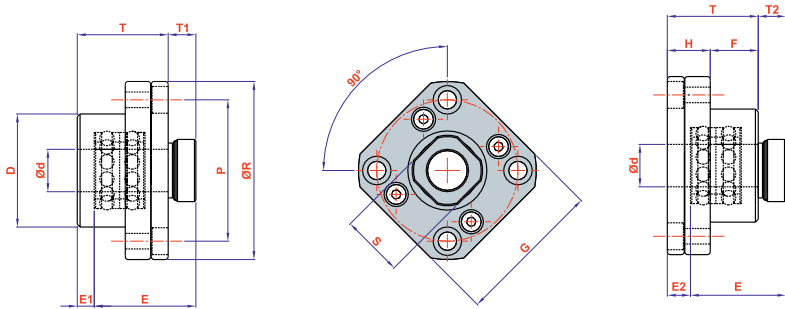


SUCT

SUCT Stainless Bearing (Plastic)

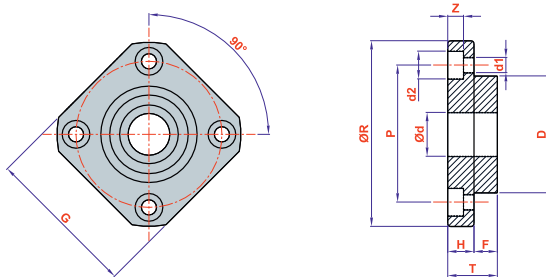
ΚΩΔΙΚΟΣ	Type	PRODUCT NAME	Bi	a	c	b	v	m	h	t	e	n	s	d
SUCT 201	SUCT 201	Ø 12 STAINLESS BEARING	31	99	27,5	12	88	76	64	36	47	12,7	M16	20
SUCT 202	SUCT 202	Ø 15 STAINLESS BEARING	31	99	27,5	12	88	76	64	36	47	12,7	M16	20
SUCT 203	SUCT 203	Ø 17 STAINLESS BEARING	31	99	27,5	12	88	76	64	36	47	12,7	M16	20
SUCT 204	SUCT 204	Ø 20 STAINLESS BEARING	31	99	27,5	12	88	76	64	36	47	12,7	M16	20
SUCT 205	SUCT 205	Ø 25 STAINLESS BEARING	34	99	27,5	12	88	76	64	36	47	14,3	M16	25
SUCT 206	SUCT 206	Ø 30 STAINLESS BEARING	38,1	125	34,5	12	102	89	74	40	63	15,9	M16	30
SUCT 207	SUCT 207	Ø 35 STAINLESS BEARING	42,9	125	34,5	12	102	89	74	40	63	17,5	M16	35
SUCT 208	SUCT 208	Ø 40 STAINLESS BEARING	49,2	140	34,5	16	114	102	85	40	80	19	M16	40

BALLSCREW END SUPPORT UNIT



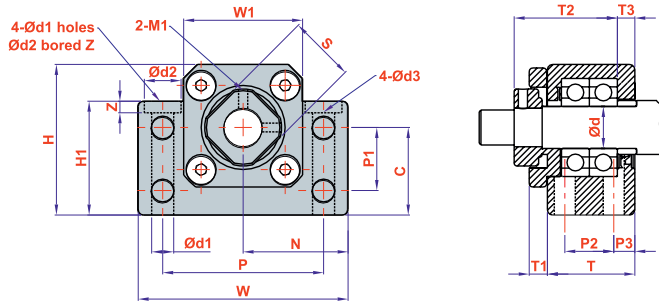
ΚΩΔΙΚΟΣ	Type	Dimensions (mm)											Set A		Set B		
		Ød	R	G	T	H	F	D	E	P	d1	d2	S	T1	E1	T2	E2
FK 10	FK 10	10	52	42	27	10	17	34	17	42	4.5	8	15.8	7.3	5	8.5	6
FK 12	FK 12	12	54	44	27	10	17	36	17	44	4.5	8	19	7.3	5	8.5	6
FK 15	FK 15	15	63	52	32	15	17	40	17	50	5.5	9.5	22	10	6	12	8
FK 20	FK 20	20	85	68	52	22	30	57	30	70	6.6	11	30	10	10	12	14
FK 25	FK 25	25	98	79	57	27	30	63	30	80	9	15	35	13	10	20	16.5
FK 30	FK 30	30	117	93	62	30	32	75	32	95	11	17.5	40	11	12	17.5	17.6

BALLSCREW END SUPPORT UNIT



ΚΩΔΙΚΟΣ	Type	Dimensions (mm)										
		Ød	R	G	T	H	F	D	P	d1	d2	Z
FF 10	FF 10	8	43	35	12	7	5	28	35	3.4	6	3.4
FF 12	FF 12	10	52	42	15	7	8	34	42	4.2	8	4.4
FF 15	FF 15	15	63	52	17	9	8	40	50	5.2	9.5	5.4
FF 20	FF 20	20	85	68	20	11	9	57	70	6.3	11	6.5
FF 25	FF 25	25	98	79	24	14	10	63	80	8.7	14	8.6
FF 30	FF 30	30	117	93	27	18	9	75	95	10.7	17.5	10.8

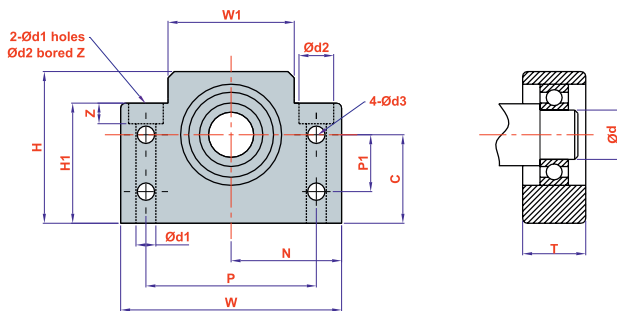
BALLSCREW END SUPPORT UNIT



BK SERIES

ΚΩΔΙΚΟΣ	Type	Dimensions (mm)																		
		Ød	T	T1	T2	T3	W	W1	H	H1	N	C	P	P1	P2	P3	Ød1	Ød2	Z	Ød3
BK 10	BK 10	10	25	5	29.5	5	60	34	39	32.5	30	22	46	13	13	6	6.3	10.5	1.5	5.5
BK 12	BK 12	12	25	5	29.5	5	60	34	42	32.5	30	25	46	18	13	6	6.3	10.5	1.5	5.5
BK 15	BK 15	15	27	6	32	6	70	38	47	38	35	28	54	18	15	6	6.3	10.5	6.5	5.5
BK 17	BK 17	17	35	9	44	7	86	48	63	55	43	39	68	28	19	8	8.7	14	8.6	6.6
BK 20	BK 20	20	35	8	45	8	88	50	59	50	44	34	70	22	19	8	8.7	14	8.5	6.6
BK 25	BK 25	25	42	12	54	9	106	62	79	70	53	48	85	33	22	10	10.7	17.5	10.8	9
BK 30	BK 30	30	45	14.2	61	9	128	74	88	78	64	51	102	33	23	11	13.7	20	13	11
BK 40	BK 40	40	61	18.2	76	15	160	98	109	90	80	60	130	37	23	14	17.7	26	17.5	14

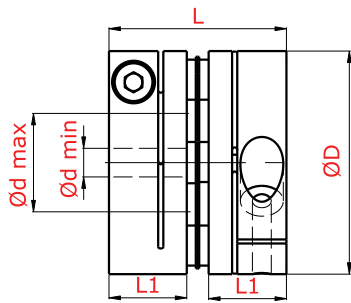
BALLSCREW END SUPPORT UNIT



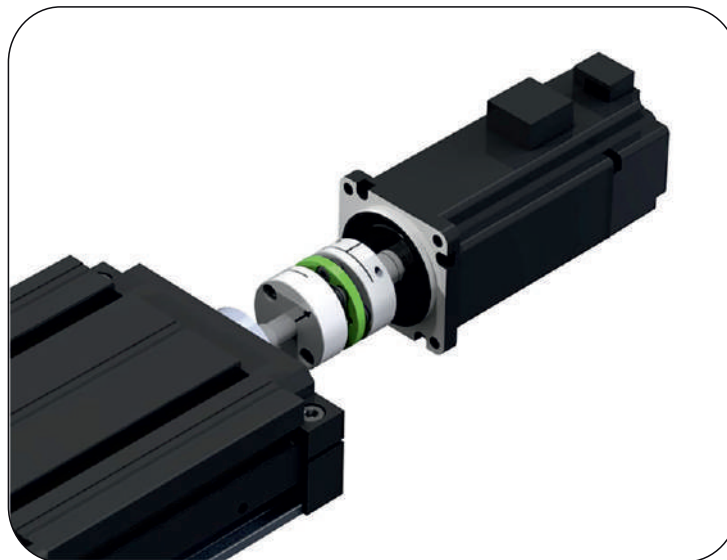
BF SERIES

ΚΩΔΙΚΟΣ	Type	Dimensions (mm)															
		Ød	T	W	W1	H	H1	P	P1	Ød1	Ød2	Z	Ød3	N	C		
BF 10	BF 10	8	20	60	34	39	32.5	46	15	6.3	10.5	5	5.5	17	22		
BF 12	BF 12	10	20	60	34	43	32.5	46	18	6.3	10.5	1.5	5.5	30	25		
BF 15	BF 15	15	20	70	40	48	38	54	18	6.3	10.5	6.5	5.5	35	28		
BF 17	BF 17	17	23	86	50	64	55	68	28	8.7	14	8.6	6.6	43	39		
BF 20	BF 20	20	26	88	52	60	50	70	22	8.7	14	8.6	6.6	44	34		
BF 25	BF 25	25	30	106	64	80	70	85	33	10.7	17.5	11	9.3	53	48		
BF 30	BF 30	30	32	128	76	89	78	102	33	13.7	20	12.5	11	64	51		
BF 40	BF 40	40	37	160	100	109	90	130	37	17.7	26	17.5	14	80	60		

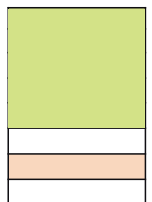
CYLINDRICAL DISC COUPLINGS (SINGLE)



SDS-C



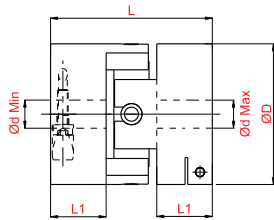
ΚΩΔΙΚΟΣ	Type	Dimensions (mm)						Max Angular Offset ()	Max Axial Offset (mm)	Max Torque (Nm)	Max. Cycle (rpm)
		Inner Dia d min	Inner Dia d max	Outer Dia D	Length L	L1	M				
SDS-19C	SDS-19C	3	6	19	19,3	8,7	2,6	1	0	1,8	14.000
SDS-22C	SDS-22C	3	8	22,2	19,7	8,7	2,6	1	0	2,2	10.000
SDS-26C	SDS-26C	4	10	26,6	24,1	10,6	3	1	0	3,0	10.000



There are two versions, namely, single-disc and double-disc types; and it is suitable for ensuring absorption of motion transmission with angular difference or balance. Single-disc coupling is suitable for use in areas with angular mismatch. Double-disc coupling is available for areas with both angular and axial mismatches.



CROSS JOINT COUPLINGS

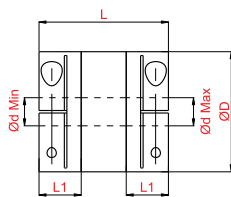


Advantages and Preferred Areas of Use: Can eliminate both angular and axial mismatches thanks to pin passing through its center and dry ball bearings on both sides. This is ensured through combination of advantages of Oldham coupling and joint. These couplings with high force and low inertia offer satisfactory speed of reaction against instantaneous changes of direction. They offer high resistance against chemical materials.

ΚΩΔΙΚΟΣ	Type	Dimensions (mm)						Max Angular Offset (°)	Max Axial Offset (mm)	Max Torque (Nm)	Max. Cycle (rpm)
		Inner Dia d min	Inner Dia d min	Outer Dia D	Length L	L1	M				
SCJA-40C	SCJA-40C	8	15	40	45,6	16	5	1,5	0,5	10	7.000



RUBBER COUPLINGS

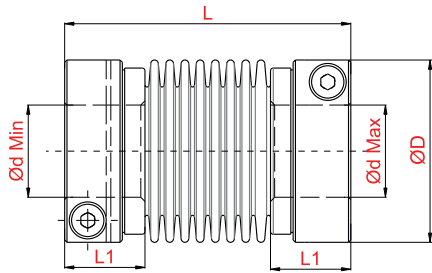


These couplings are capable of absorbing vibrations and loads arising from motion transmission at high torque in servo applications. The most notable feature of high-performance rubber coupling is to absorb vibrations. Can run safely between -20 and +80°C.

ΚΩΔΙΚΟΣ	Type	Dimensions (mm)						Max Angular Offset (°)	Max Axial Offset (mm)	Max Torque (Nm)	Max. Cycle (rpm)
		Inner Dia d min	Inner Dia d min	Outer Dia D	Length L	L1	M				
SHR-14C	SHR-14C	3	6	13,8	22,4	6,7	1,6	1,5	0,15	2,0	42.000
SHR-24C	SHR-24C	5	12	23,8	31,2	9,6	2,6	1,5	0,15	7,0	25.000
SHR-29C	SHR-29C	6	15	28,8	35	11	3	1,5	0,2	11,4	21.000
SHR-33C	SHR-33C	8	16	32,8	37	12	3	1,5	0,2	14,0	18.000
SHR-43C	SHR-43C	10	20	42,8	48	15,5	4	1,5	0,2	32,0	14.000



SPRING COUPLING

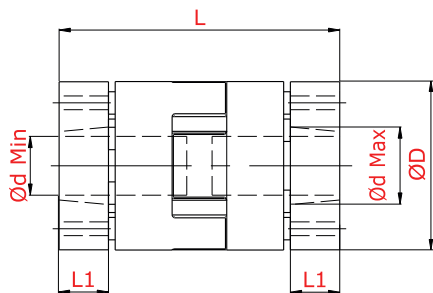


This coupling type ensures absorbing transmission of balanced motion on drives with angular difference. Meets incoming axial and radial (angular) loads thanks to spring mechanism in its body. This is the coupling which offers highest positioning sensitivity among all others.

ΚΩΔΙΚΟΣ	Type	Dimensions (mm)						Max Angular Misalignment (°)	Max Axial Misalignment (mm)	Max. Torque (Nm)	Max. Cycle (rpm)
		Inside Dia d min	Inside Dia d max	Outside Dia D	Length L	L1-L2	M				
BW-16C	BW-16C	4	8	16	30	10,5	3	1,5	0,3	1,6	18.000
BW-20C	BW-20C	5	12	20	33	12,5	3	2,0	0,35	3	13.000
BW-25C	BW-25C	5	12	25	38	14	3	2,0	0,4	4	14.000
BW-32C	BW-32C	6	16	32	43	13,5	4	2,0	0,5	5	10.000
BW-40C	BW-40C	8	20	40	62	21	5	2,0	0,6	20	8.000
BW-55C	BW-55C	10	30	55	74	23	6	2,0	0,8	50	6.000
BW-65C	BW-65C	12	38	65	81	25,5	8	2,0	0,8	120	4.500
BW-82C	BW-82C	14	42	82	103	34,5	8	2,0	1,0	160	4.000



HUB FASTENING SERVO COUPLINGS

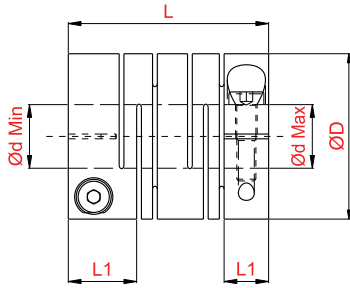


Auxiliary components that absorb direct motion coming from motor and ensure high torque transmission. Servo coupling offers high resistance against torsional strength and is suitable for applications requiring moment.

ΚΩΔΙΚΟΣ	Type	Dimensions (mm)						Max Angular Misalignment (°)	Max Axial Misalignment (mm)	Max. Torque (Nm)	Max. Cycle (rpm)
		Inside Dia d min	Inside Dia d max	Outside Dia D	Length L	L1-L2	M				
JM-30T	JM-30T	6	14	30	50	8	3	0,9	+1,0, -1,0	25	25.000
JM-40T	JM-40T	10	20	40	66	12	4	0,9	+1,2, -1,0	34	16.500
JM-55T	JM-55T	11	28	55	78	15	5	0,9	+1,4, -1,0	120	12.200
JM-65T	JM-65T	15	38	65	90	17	5	0,9	+1,5, -1,4	320	10.500
JM-80T	JM-80T	20	45	80	114	24	6	0,9	+1,8, -1,4	650	8.650



FLEXIBLE COUPLINGS

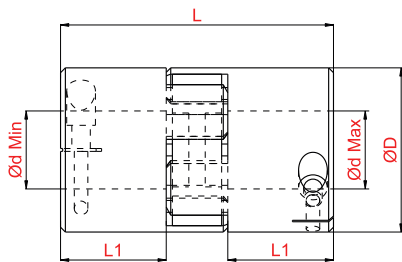


Thanks to spirally cut body structures, it makes up for axis mismatches and ensures torque transmission. Not suitable for applications with high moment requirement. Thanks to monoblock design, they are void-free and provide high efficiency.

ΚΩΔΙΚΟΣ	Type	Dimensions (mm)						Max Angular Offset (°)	Max Axial Offset (mm)	Max Torque (Nm)	Max. Cycle (rpm)
		Inner Dia d min	Inner Dia d max	Outer Dia D	Length L	L1-L2	M				
JT-16C	JT-16C	5	8	16	23	6,5	2,5	2	+0.4, -0.4	1	24.000
JT-20C	JT-20C	5	10	20	26	7,5	3	2	+0.4, -0.4	2	20.000
JT-25C	JT-25C	5	12	25	31	8,5	3	2	+0.5, -0.5	4	15.000
JT-32C	JT-32C	8	16	32	41	12	4	2	+0.5, -0.5	8	12.000
JT-40C	JT-40C	8	20	40	56	17	5	2	+0.5, -0.5	16	9.500
JT-50C	JT-50C	12	25	50	71	21	6	2	+0.5, -0.5	32	7.000
JT-63C	JT-63C	14	35	63	90	26	8	2	+0.5, -0.5	64	6.000



SERVO COUPLINGS



Auxiliary components that ensures high torque transmission through absorption of direct motion incoming from the motor. Servo coupling offers high resistance against torsional strength and is suitable for applications requiring moment.

ΚΩΔΙΚΟΣ	Type	Dimensions (mm)						Max Angular Offset (°)	Max Axial Offset (mm)	Max Torque (Nm)	Max. Cycle (rpm)
		Inner Dia d min	Inner Dia d max	Outer Dia D	Length L	L1-L2	M				
JM-16C	JM-16C	4	7	16	22	7	2,5	0,9	+0.6, -0.3	4	24.700
JM-25C	JM-25C	4	12	25	34	11	4	0,9	+0.8, -0.4	18	17.000
JM-30C	JM-30C	5	16	30	35	11	4	0,9	+1.0, -0.5	25	12.600
JM-40C	JM-40C	8	24	40	66	25	5	0,9	+1.2, -0.5	34	9.000
JM-55C	JM-55C	10	28	55	78	30	6	0,9	+1.4, -0.5	120	6.500
JM-65C	JM-65C	10	38	65	90	35	8	0,9	+1.5, -0.7	320	5.260
JM-80C	JM-80C	12	45	80	114	45	8	0,9	+1.8, -0.7	650	4.600
JM-95C	JM-95C	20	55	95	126	50	10	0,9	+2.0, -1.0	900	3.800

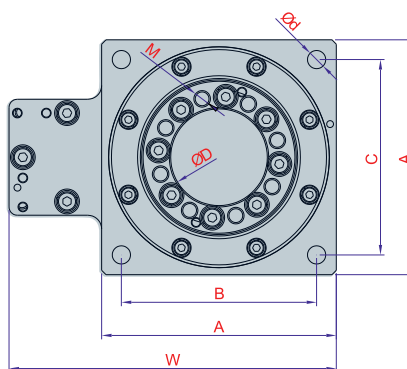
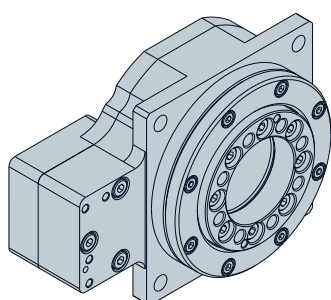
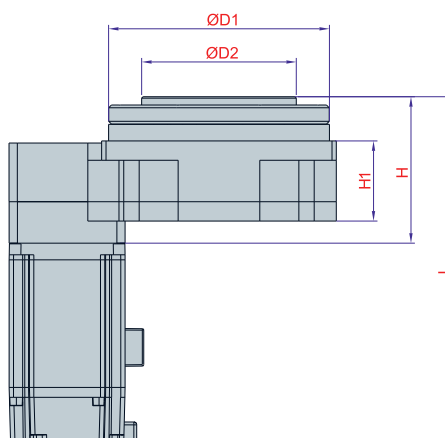
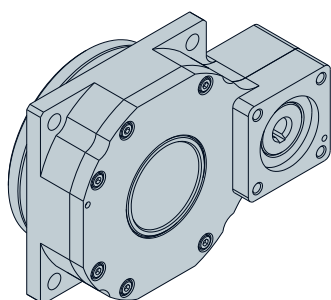
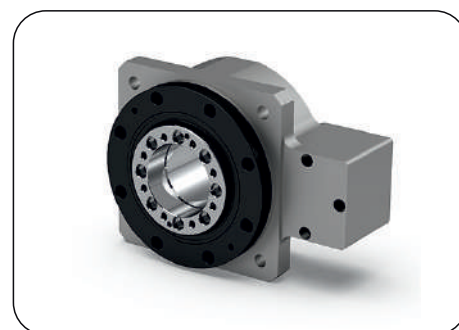
Box Filling Systems (Saddle)



Robot Applications (Joint Component)



ROTARY TABLE

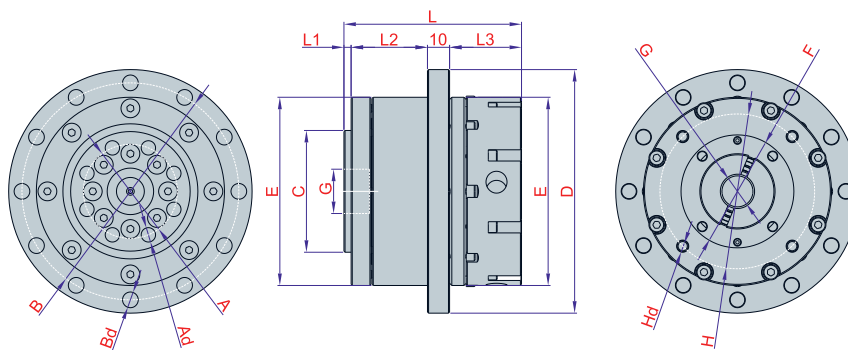


ΚΩΔΙΚΟΣ	Type	PRODUCT NAME	A	B	C	W	H	H1	L	D	D1	D2	d	M	Max. Load(kgf)	Motor
RT NT-60	NT60 i:10	ROTARY TABLE Ø060 i:10	60	50	50	85	56,6	29	157	28	60	45	5	3	30	100 W SERVO
RT NT-85	NT85 i:30	ROTARY TABLE Ø085 i:30	85	70,7	70,7	118	53	29	153	35	80	56	6,6	5	50	100 W SERVO
RT NT-230	NT230 i:10	ROTARY TABLE Ø230 i:10	235	198	198	332,5	129	34	276	105	230	150	9	6	835	1000 W SERVO

CYCLOID BALL REDUCERS

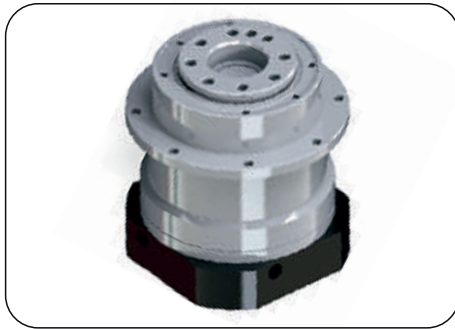


Features/Models	Ratio	SBRU110	SBRU130	SBRU200
Continuous Torque (kgf*m/Nm)	10	-	-	-
	15	-	-	-
	20	-	2.93/28.71	-
	30	-	2.13/20.87	-
	40	-	2.5/24.5	-
	50	1.96/19.21	2.43/23.81	-
Max Torque (kgf*m/Nm)	10~50	Three Times Rated Output Torque		
Breaking Point (kgf*m/Nm)	10~50	Six Times Rated Torque		
Inertia (kg*cm ²)	10~50	0.42	0.56	
Max. Revolution (rpm / min)	10~50	3000		
Max. Radial Load (kgf)	10~50	50	170	
Input Shaft Diameter (mm)	10~50	14	14	
Soft input measurement (mm)	10~50	X	X	
Weight (kg)	10~50	2.5	4.3	

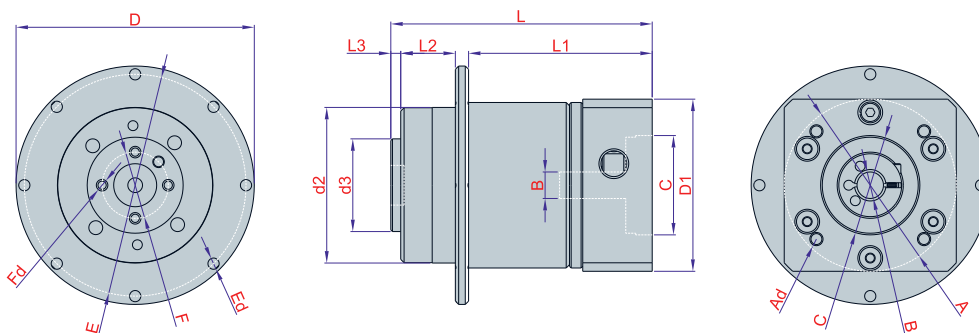


ΚΩΔΙΚΟΣ	Type	PRODUCT NAME	A	Ad	B	Bd	C	D	E	G	H	Hd	L	L1	L2	L3	Weight (kg)	
CR-SBRU 110	SBRU 110	CYCLOID Reducer	42,5	8 x M6	98	12 x Ø6.6	55	110	85	50	14	70	4 x M5	80,25	3,25	34,5	32,5	2,5
CR-SBRU 130	SBRU 130	CYCLOID Reducer	40	6 x M8	117	12 x Ø6.6	60	130	104	50	14	70	4 x M5	81,25	5	41,75	24,5	4,3

CYCLOID BALL REDUCERS



Features/Models	Ratio	SBDE50	SBDE70	SBDE90
Continuous Torque (kgf*m/Nm)	10	1.43/14.01	3.22/31.55	4/3.92
	15	-	2.11/20.68	2.78/27.24
	20	-	1.57/15.39	3.93/38.51
	30	1.16/11.37	2.19/21.46	1.8/17.64
	40	-	1.64/16.07	2.88/28.22
50	1.96/19.21	2.43/23.81	10.64/104.27	
Max. Torque (kgf*m/Nm)	10~50	Three Times Rated Output Torque		
Breaking Point (kgf*m/Nm)	10~50	Six Times Rated Torque		
Inertia (kg*cm ²)	10~50	0.06	0.14	0.92
Max. Revolution (rpm / min)	10~50	3000		
Max. Radial Load (kgf)	10~50	25	40	108
Input Shaft Diameter (mm)	10~50	X	14	16~19
Soft input measurement (mm)	10~50	8	X	X
Weight (kg)	10~50	0.46	3.4	4.3



ΚΩΔΙΚΟΣ	Type	PRODUCT NAME	A	Ad	B	C	D	d1	d2	d3	E	Ed	F	Fd	L	L1	L2	L3	Weight (kg)
CR-SBDE 50	SBDE 50	CYCLOID Reducer	46	4 x M4	8	30	72	52	47	28	60	8 x Ø 3.4	20	4 x M3	79	55,5	16,5	3	0,46
CR-SBDE 90	SBDE 90	CYCLOID Reducer	90	4 x M6	16	70	118	118	90	63	107	8 x Ø 5.5	50	8 x M6	120	83,6	24	5,5	4,3

Gantry Systems



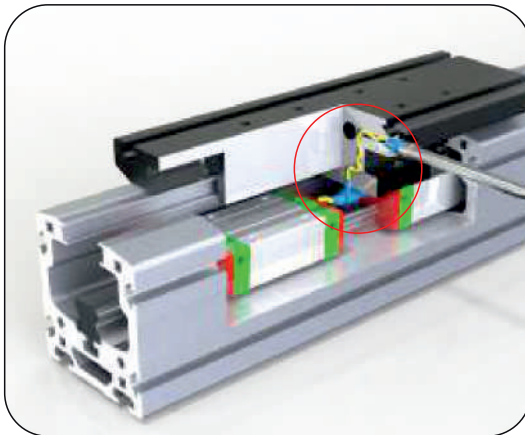
Cartesian Robot



LONG
WORK
LIFE

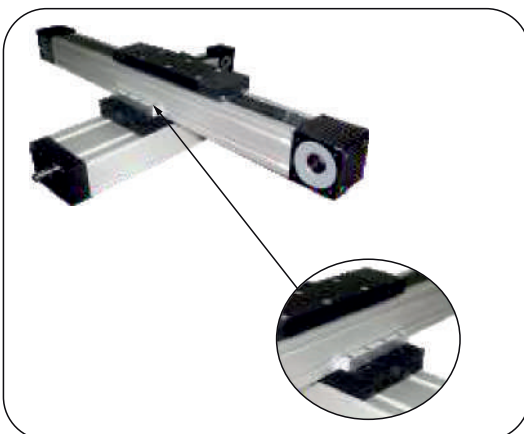
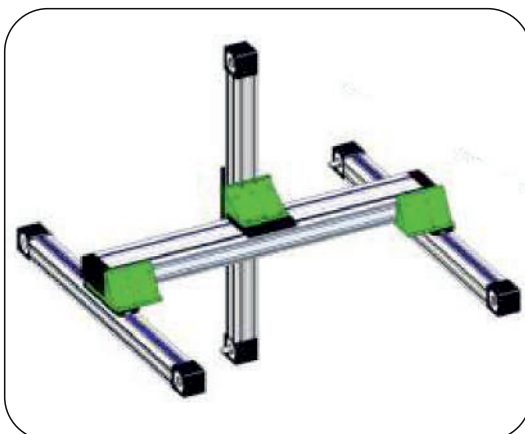
Extra Lubrication Features

- 64x64 Compact
- 80x80 Compact
- 50x110 Compact
- 65x145 Compact
- 80x160 Compact
- 100x100 Compact

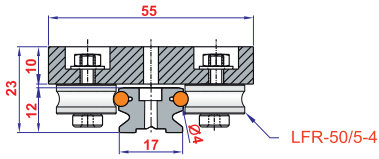


- Ø6 Block Bearing
- Ø8 Block Bearing
- Ø12 Block Bearing
- Ø20 Block Bearing
- 45x90 Module
- 90x90 Module

Module Connection Options



Block Guidance Ø4
(L MAX 6000 mm)

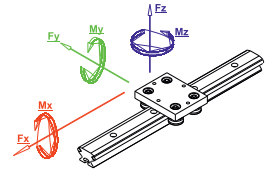


BLOCK (OPEN TYPE)



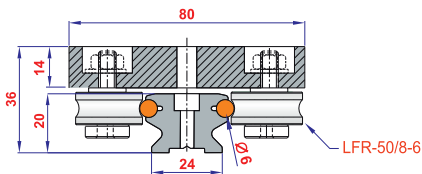
ΚΩΔΙΚΟΣ	EXTRA SPARE PARTS	WEIGHT	
107-50/5-4	GUIDANCE (WITH Ø4 SHAFT)	1 μέτρο	620 gr
BLOCK Φ4	BLOCK(4 BALLBEARINGS)	1 τεμάχιο	110 gr

Loading Capacity



Load	Static	Ø4 Block
■ F _x (N)		120
■ F _y (N)		340
■ F _z (N)		360
Moment		
■ M _x (Nm)		60
■ M _y (Nm)		48
■ M _z (Nm)		64

Block Guidance Ø6
(L MAX 6000 mm)



**PROTECTIVE GUARD
LUBRICATING PROPERTY
(CLOSED TYPE)**

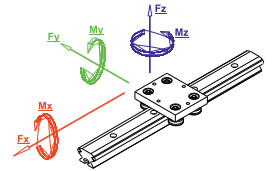


BLOCK (OPEN TYPE)



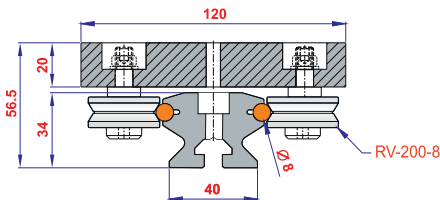
ΚΩΔΙΚΟΣ	EXTRA SPARE PARTS	WEIGHT	
108-50/8-6	GUIDANCE (Ø6 WITH BALLBEARINGS)	1 μέτρο	1530 gr
BLOCK Φ6 closed	BLOCK WITH 4 BALLBEARINGS (GUARDED /OILED)	1 τεμάχιο	660 gr
BLOCK Φ6	BLOCK(WITH 4 BALLBEARINGS)	1 τεμάχιο	420 gr

Loading Capacity



Load	Static	Ø6 Block
■ F _x (N)		
■ F _y (N)		360
■ F _z (N)		490
Moment		
■ M _x (Nm)		30
■ M _y (Nm)		40
■ M _z (Nm)		55

Block Guidance Ø8
(L MAX 6000 mm)



**PROTECTIVE GUARD
LUBRICATING PROPERTY
(CLOSED TYPE)**

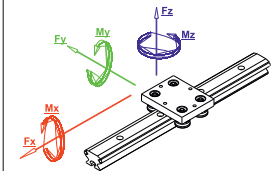


BLOCK (OPEN TYPE)



ΚΩΔΙΚΟΣ	EXTRA SPARE PARTS	WEIGHT	
109-5200-8	GUIDANCE (Ø8 WITH BALLBEARINGS)	1 μέτρο	3650 gr
BLOCK Φ8 closed	BLOCK WITH 4 BALLBEARINGS (GUARDED /OILED)	1 τεμάχιο	1340 gr
BLOCK Φ8	BLOCK(WITH 4 BALLBEARINGS)	1 τεμάχιο	1000 gr

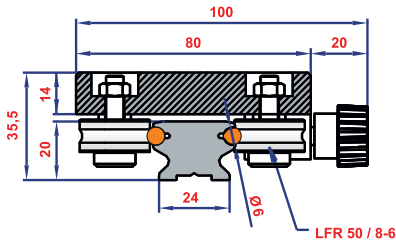
Loading Capacity



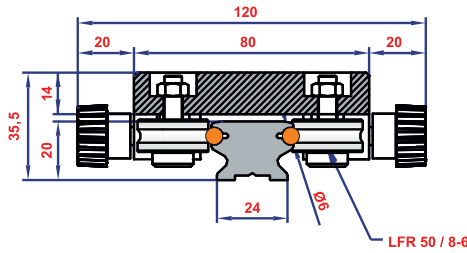
Load	Static	Ø8 Block
■ F _x (N)		
■ F _y (N)		580
■ F _z (N)		740
Moment		
■ M _x (Nm)		58
■ M _y (Nm)		48
■ M _z (Nm)		64

Lubrication protective shield protects against environmental factors with and extends the operating life of 70%.

Block Guidance Ø6 Single Lock
(L MAX 6000 mm)



Block Guidance Ø6 Double Lock
(L MAX 6000 mm)

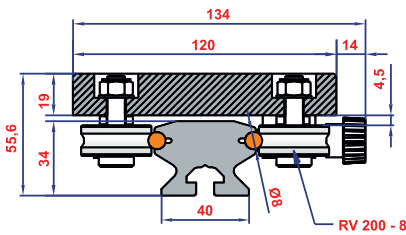


BLOCK (OPEN TYPE)

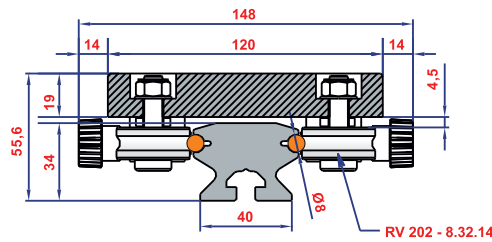


ΚΩΔΙΚΟΣ	EXTRA SPARE PARTS	WEIGHT
108-50/8-6	GUIDANCE (Ø6 WITH BALLBEARINGS) 1 μέτρο	1530 gr
BLOCK Φ6 SL	BLOCK CARRIAGE SINGLE LOCK 1 τεμάχιο	460 gr
BLOCK Φ6 DL	BLOCK CARRIAGE DOUBLE LOCK 1 τεμάχιο	480 gr

Block Guidance Ø8 Single Lock
(L MAX 6000 mm)



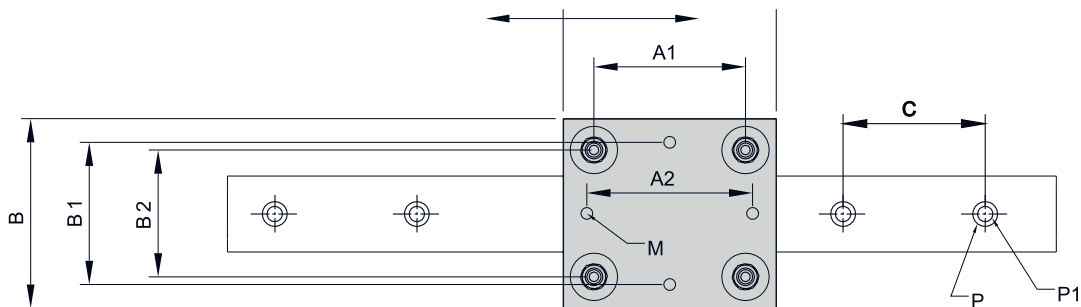
Block Guidance Ø8 Double Lock
(L MAX 6000 mm)



BLOCK (OPEN TYPE)

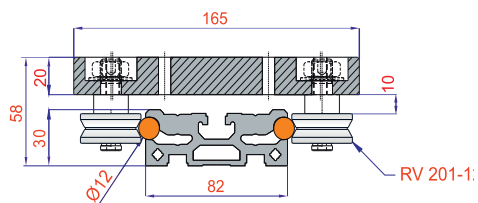


ΚΩΔΙΚΟΣ	EXTRA SPARE PARTS	WEIGHT
109-5200-8	GUIDANCE (Ø8 WITH BALLBEARINGS) 1 μέτρο	3650 gr
BLOCK Φ8 SL	BLOCK CARRIAGE SINGLE LOCK 1 τεμάχιο	1050 gr
BLOCK Φ8 DL	BLOCK CARRIAGE DOUBLE LOCK 1 τεμάχιο	1100 gr



PRODUCT NAME	ØD	B	B1	B2	A	A1	A2	M	G	H	H1	ROLLER BEARINGS
Ø4 BLOCK GUIDANCE	4	55	40	34	50	31	40	M5	0.5	23	9.5	LFR 50 / 5-4
Ø6 BLOCK GUIDANCE	6	80	60	53.5	90	64	70	M6	1	35.5	14	LFR 50 / 8-6 KDD
Ø6 CLOSED TYPE	6	100	60	53.5	115	64	70	M6	1	35.5	14	LFR 50 / 8-6 KDD
Ø8 BLOCK GUIDANCE	8	120	100	80.5	95	55	75	M8	4.5	55.6	19	RV 200 - 8.32.14 KDD
Ø8 CLOSED TYPE	8	135	100	80.5	115	55	75	M8	4.5	55.6	19	RV 200 - 8.32.14 KDD

Block Guidance Ø12
(L MAX 6000 mm)



PROTECTIVE GUARD
LUBRICATING PROPERTY
(CLOSED TYPE)



BLOCK (OPEN TYPE)



Loading Capacity

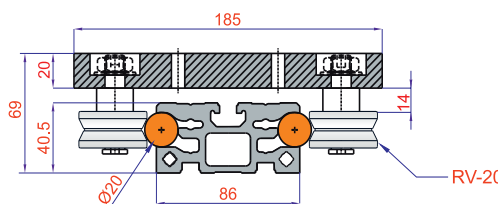
Load	Static (N)	Ø 12
■ F _x	(N)	
■ F _y	(N)	870
■ F _z	(N)	1100

Moment

■ M _x	(Nm)	70
■ M _y	(Nm)	65
■ M _z	(Nm)	75

ΚΩΔΙΚΟΣ	EXTRA SPARE PARTS	WEIGHT	
110-5201	GUIDANCE (Ø12 WITH BALLBEARINGS)	1 μέτρο	5530 gr
BLOCK Φ12 closed	BLOCK WITH 4 BALLBEARINGS (GUARDED /OILED)	1 τεμάχιο	2170 gr
BLOCK Φ12	BLOCK(WITH 4 BALLBEARINGS)	1 τεμάχιο	1790 gr

Block Guidance Ø20
(L MAX 6000 mm)



PROTECTIVE GUARD
LUBRICATING PROPERTY
(CLOSED TYPE)



BLOCK (OPEN TYPE)



Loading Capacity

Load	Static (N)	Ø 20
■ F _x	(N)	
■ F _y	(N)	1260
■ F _z	(N)	1870

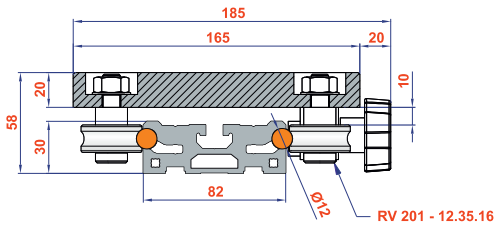
Moment

■ M _x	(Nm)	95
■ M _y	(Nm)	85
■ M _z	(Nm)	75

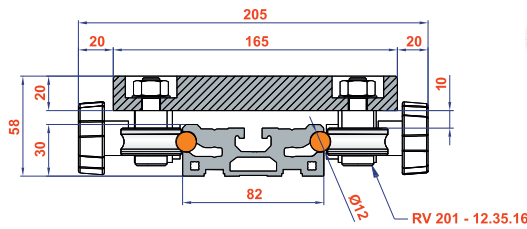
ΚΩΔΙΚΟΣ	EXTRA SPARE PARTS	WEIGHT	
115-202	GUIDANCE (Ø20 WITH BALLBEARINGS)	1 μέτρο	9500 gr
BLOCK Φ20 closed	BLOCK WITH 4 BALLBEARINGS (GUARDED /OILED)	1 τεμάχιο	3500 gr
BLOCK Φ20	BLOCK(WITH 4 BALLBEARINGS)	1 τεμάχιο	2570 gr

Lubrication protective shield protects against environmental factors with and extends the operating life of 70%.

**Block Guidance Ø12 Single Lock
(L MAX 6000 mm)**



**Block Guidance Ø12 Double Lock
(L MAX 6000 mm)**

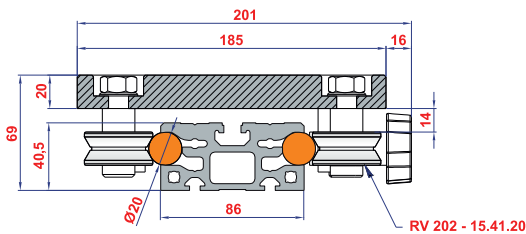


BLOCK (OPEN TYPE)

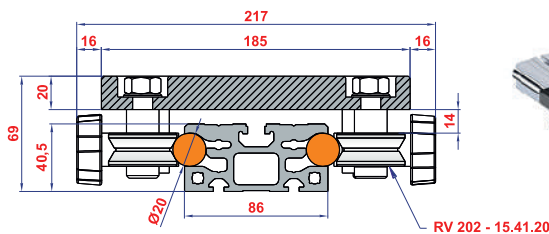


ΚΩΔΙΚΟΣ	EXTRA SPARE PARTS	WEIGHT
110-5201	GUIDANCE (Ø12 WITH BALLBEARINGS) 1 μέτρο	5530 gr
BLOCK Φ12 SL	BLOCK CARRIAGE SINGLE LOCK 1 τεμάχιο	1910 gr
BLOCK Φ12 DL	BLOCK CARRIAGE DOUBLE LOCK 1 τεμάχιο	2030 gr

**Block Guidance Ø20 Single Lock
(L MAX 6000 mm)**



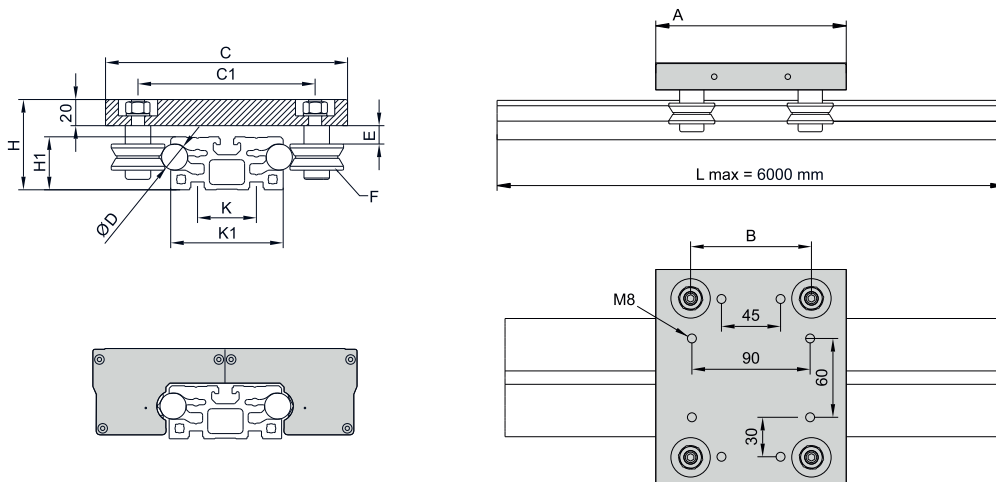
**Block Guidance Ø20 Double Lock
(L MAX 6000 mm)**



BLOCK (OPEN TYPE)



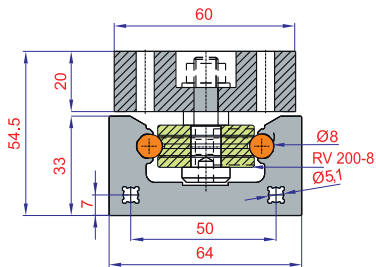
ΚΩΔΙΚΟΣ	EXTRA SPARE PARTS	WEIGHT
115-202	GUIDANCE (Ø20 WITH BALLBEARINGS) 1 μέτρο	9500 gr
BLOCK Φ20 SL	BLOCK CARRIAGE SINGLE LOCK 1 τεμάχιο	2750 gr
BLOCK Φ20 DL	BLOCK CARRIAGE DOUBLE LOCK 1 τεμάχιο	2930 gr



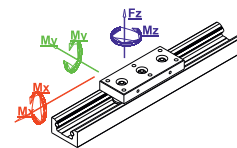
PRODUCT NAME	ØD	A	B	C	C1	E	H	H1	ROLLER BEARINGS
Ø12 BLOCK GUIDANCE	12	145	92	165	121	10	58	30	RV 201-12.35.16 KDD
Ø12 CLOSED TYPE	12	155	92	182	121	10	58	30	

PRODUCT NAME	ØD	A	B	C	C1	E	H	H1	ROLLER BEARINGS
Ø20 BLOCK GUIDANCE	20	165	105	185	135	14	69	40.5	RV 202-15.41.20 KDD
Ø20 CLOSED TYPE	20	175	105	202	135	14	69	40.5	

Closed Block Guidance Ø8
(L MAX 6000 mm)



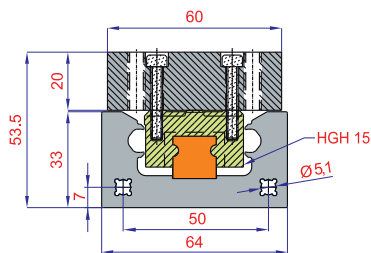
Loading Capacity



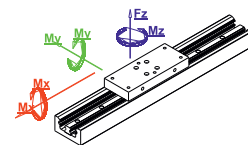
ΚΩΔΙΚΟΣ	EXTRA SPARE PARTS		WEIGHT	
112-5200	GUIDANCE (WITH Ø8 SHAFT)	1 μέτρο	4670 gr	110,00 €/m
BLOCK Φ8-3 closed	BLOCK WITH 3 BALLBEARINGS (GUARDED /OILED)	1 τεμάχιο	860 gr	
BLOCK Φ8-3 ball	BLOCK (WITH 3 BALLBEARINGS) OPEN	1 τεμάχιο	840 gr	
BLOCK Φ8-4 closed	BLOCK WITH 4 BALLBEARINGS (GUARDED /OILED)	1 τεμάχιο	960 gr	
BLOCK Φ8-4 ball	BLOCK (WITH 4 BALLBEARINGS) OPEN	1 τεμάχιο	860 gr	

Load	Static (N)	Roller
■ F _x	(N)	
■ F _y	(N)	480
■ F _z	(N)	610
Moment		
■ M _x	(Nm)	12
■ M _y	(Nm)	15
■ M _z	(Nm)	23

Closed Block Guidance 15
(L MAX 7300 mm)

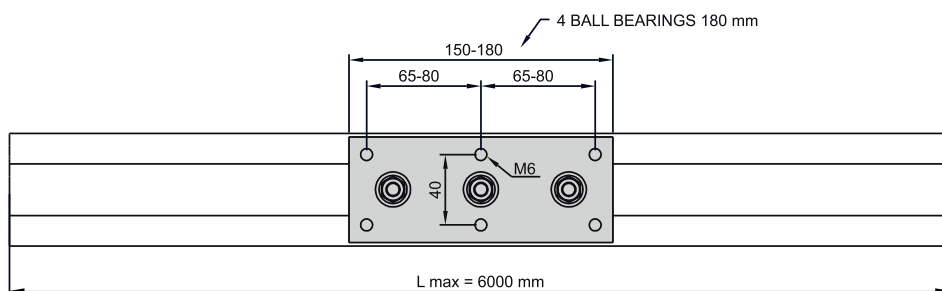
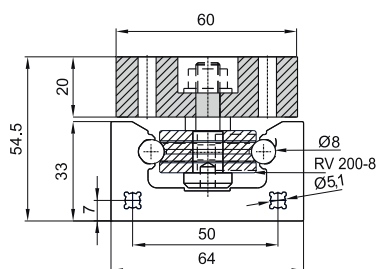
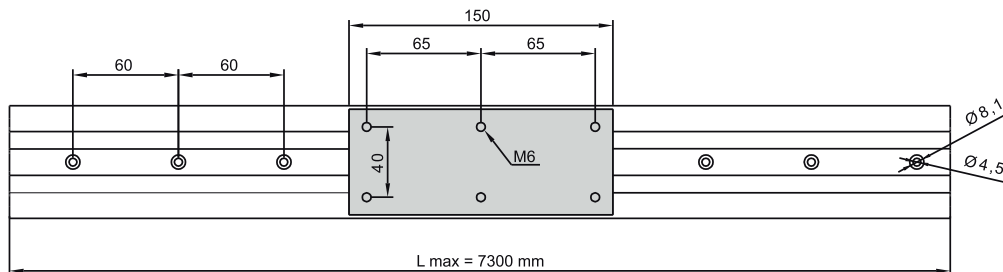
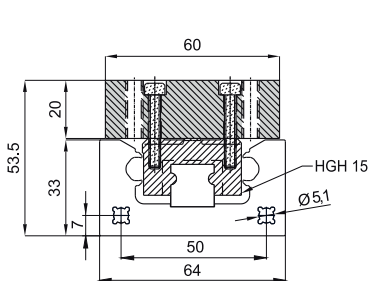


Loading Capacity

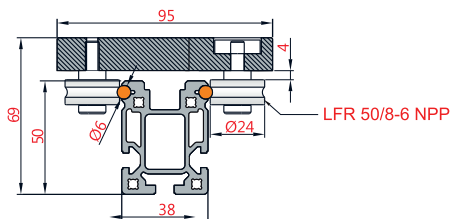


ΚΩΔΙΚΟΣ	EXTRA SPARE PARTS		WEIGHT	
111-LNR	GUIDANCE 15 (WITH LINEAR RAIL)	1 μέτρο	4670 gr	
BLOCK Φ15 linear	BLOCK (LINEAR BLOCK)	1 τεμάχιο	630 gr	

Load	Static (N)	Linear
■ F _x	(N)	
■ F _y	(N)	765
■ F _z	(N)	946
Moment		
■ M _x	(Nm)	37
■ M _y	(Nm)	34
■ M _z	(Nm)	50



Profile Guidance 38x50
(L MAX 6000 mm)



ΚΩΔΙΚΟΣ	EXTRA SPARE PARTS		WEIGHT
PG 38x50	GUIDANCE (WITH Ø6 SHAFT)	1 μέτρο	2370 gr
PG BLOCK Φ6	BLOCK(WITH 4 BALLBEARINGS)	1 τεμάχιο	550 gr

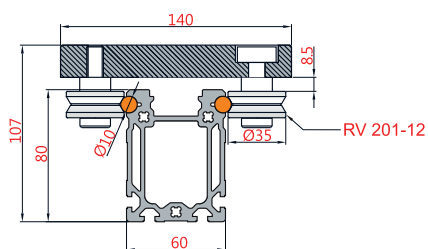
Loading Capacity

Load	Static (N)	38X50
■ F _x	(N)	480
■ F _y	(N)	610
■ F _z	(N)	23

Moment

■ M _x	(Nm)	12
■ M _y	(Nm)	15
■ M _z	(Nm)	23

Profile Guidance 60x80
(L MAX 6000 mm)



ΚΩΔΙΚΟΣ	EXTRA SPARE PARTS		WEIGHT
PG 60x80	GUIDANCE (WITH Ø10 SHAFT)	1 μέτρο	5340 gr
PG BLOCK Φ10	BLOCK(WITH 4 BALLBEARINGS)	1 τεμάχιο	1650 gr

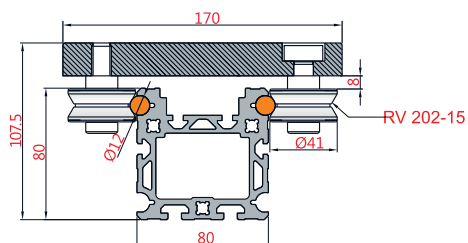
Loading Capacity

Load	Static (N)	60X80
■ F _x	(N)	765
■ F _y	(N)	946
■ F _z	(N)	50

Moment

■ M _x	(Nm)	37
■ M _y	(Nm)	34
■ M _z	(Nm)	50

Profile Guidance 80x80
(L MAX 6000 mm)



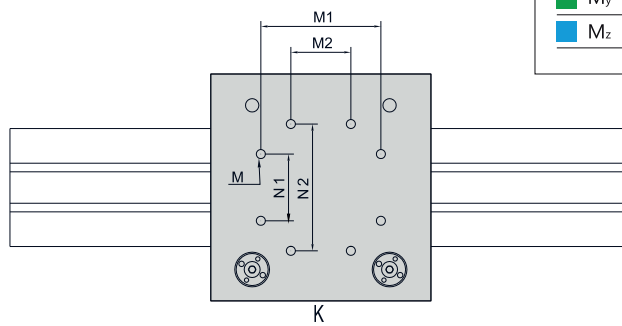
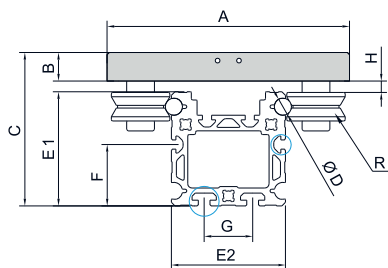
ΚΩΔΙΚΟΣ	EXTRA SPAREPARTS		WEIGHT
PG 80x80	GUIDANCE (WITH Ø12 SHAFT)	1 μέτρο	7460 gr
PG BLOCK Φ12	BLOCK(WITH 4 BALLBEARINGS)	1 τεμάχιο	2310 gr

Loading Capacity

Load	Static (N)	80X80
■ F _x	(N)	2030
■ F _y	(N)	2530
■ F _z	(N)	175

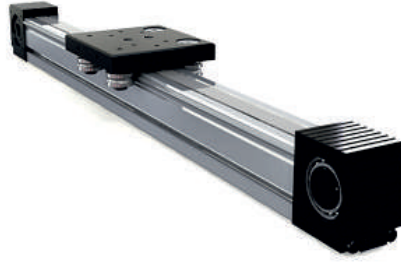
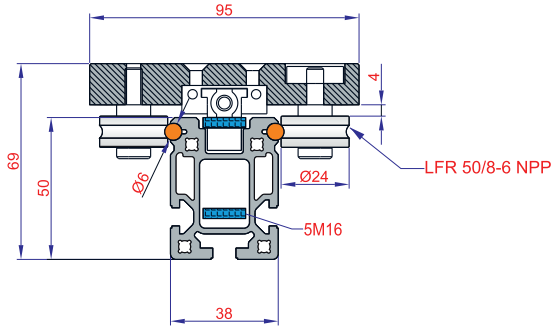
Moment

■ M _x	(Nm)	150
■ M _y	(Nm)	145
■ M _z	(Nm)	175



PRODUCT NAME	A	B	C	ØD	E1	E2	F	G	H	K	M	M1	M2	N1	N2	ROLLER BEARINGS
38x50 Guidance	95	14,5	69	6	50	38	15	-----	4	100	5	45	----	30	----	LFR 50 / 8-6 KDD
60x80 Guidance	140	19,5	107	10	80	60	12	32	8,5	150	8	90	45	45	90	RV 201-12.35.16
80x80 Guidance	170	20	107,5	12	80	80	43	34	8	165	8	90	45	50	95	RV 202-15.41.20

Timing Belt Module Roller 38x50
(L MAX 3000 mm)



Loading Capacity

Load	Static	
■ F _x	(N)	320
■ F _y	(N)	800
■ F _z	(N)	500

Moment

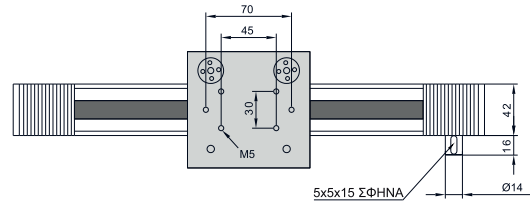
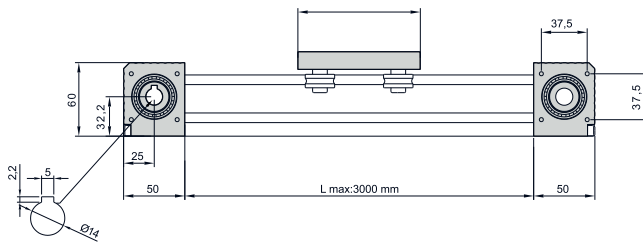
■ M _x	(Nm)	90
■ M _y	(Nm)	80
■ M _z	(Nm)	80

ΚΑΘΑΡΗ ΔΙΑΔΡΟΜΗ	TIMH
500 mm	457,00 €
1000 mm	540,00 €
2000 mm	667,00 €
3000 mm	882,00 €

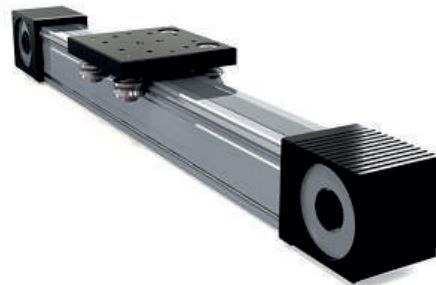
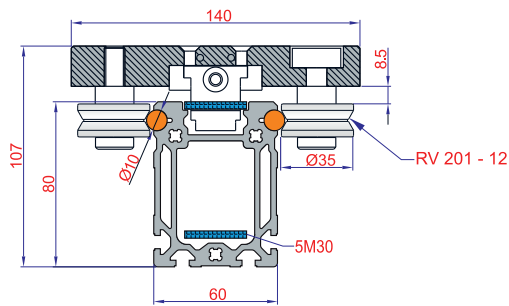
ΚΑΘΑΡΗ ΔΙΑΔΡΟΜΗ	TIMH
500 mm	457,00 €
1000 mm	540,00 €
2000 mm	667,00 €
3000 mm	882,00 €

EXTRA SPARE PARTS	
Block(with 4 Ballbearings)	1 τεμάχιο
G60 Flange+JM 30 Coupling Mounting	1 τεμάχιο
G80 Flange+JM 40 Coupling Mounting	1 τεμάχιο

SIGMA SERIES



Timing Belt Module Roller 60x80
(L MAX 5850 mm)



Loading Capacity

Load	Static	80X80
■ F _x	(N)	640
■ F _y	(N)	1760
■ F _z	(N)	1505

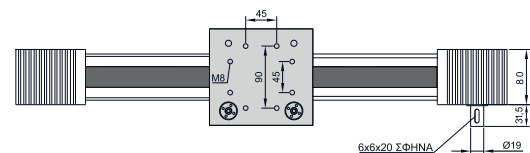
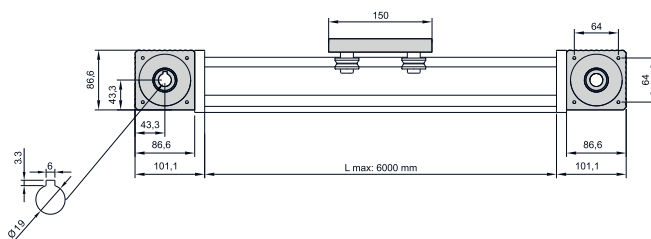
Moment

■ M _x	(Nm)	120
■ M _y	(Nm)	145
■ M _z	(Nm)	125

ΚΑΘΑΡΗ ΔΙΑΔΡΟΜΗ	TIMH
500 mm	694,00 €
1000 mm	812,00 €
2000 mm	1050,00 €
3000 mm	1288,00 €
4000 mm	1569,00 €
5000 mm	1866,00 €
5850 mm	2110,00 €

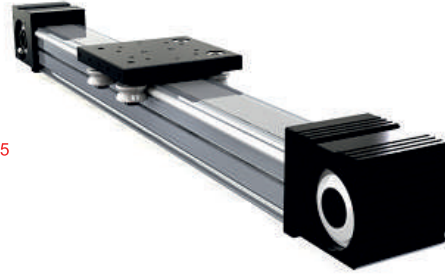
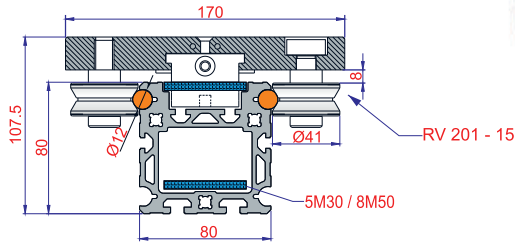
ΚΑΘΑΡΗ ΔΙΑΔΡΟΜΗ	TIMH
500 mm	694,00 €
1000 mm	812,00 €
2000 mm	1050,00 €
3000 mm	1288,00 €
4000 mm	1569,00 €
5000 mm	1866,00 €
5850 mm	2110,00 €

EXTRA SPARE PARTS	
Block(with 4 Ballbearings)	1 τεμάχιο
G85 Flange+JM 40 Coupling Mounting	1 τεμάχιο
G95 Flange+JM 40 Coupling Mounting	1 τεμάχιο



Timing Belt Module Roller 80x80

(L MAX 5800 mm)



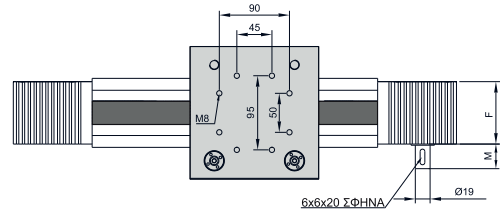
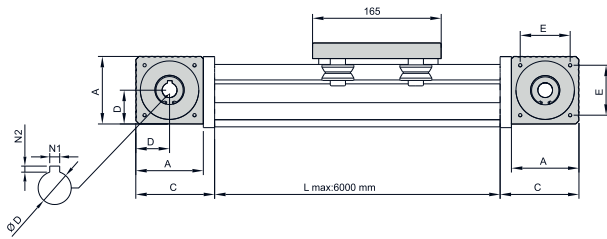
Loading Capacity

Load	Static	5M-30	8M-50
■ F _x (N)	(N)	780	780
■ F _y (N)	(N)	2100	2100
■ F _z (N)	(N)	1880	1880
Moment			
■ M _x (Nm)	(Nm)	150	150
■ M _y (Nm)	(Nm)	165	165
■ M _z (Nm)	(Nm)	175	175

SIGMA SERIES

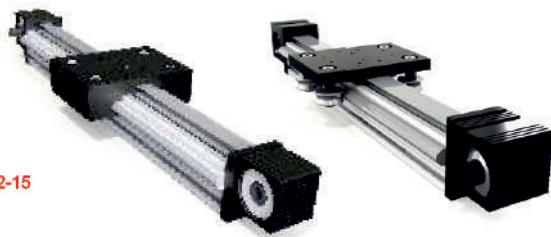
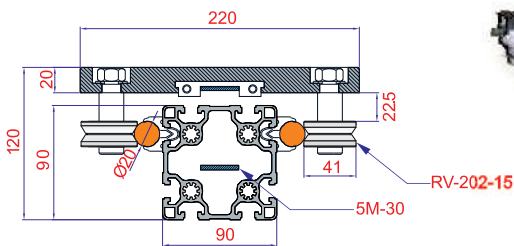
ΚΑΘΑΡΗ ΔΙΑΔΡΟΜΗ	TIMH	
	5M30 BELT MAX SPEED 5m/sn	8M50 BELT MAX SPEED 6m/sn
500 mm		
1000 mm		
2000 mm		
3000 mm		
4000 mm		
5000 mm		
5800 mm		

EXTRA SPARE PARTS	
Block(with 4 Ballbearings) (5m30 Type)	1 τεμάχιο
Block(with 4 Ballbearings) (8m50 Type)	1 τεμάχιο
G80 Flange+JM 40 Coupling Mounting	1 τεμάχιο
G85 Flange+JM 40 Coupling Mounting	1 τεμάχιο



Timing Belt Module Roller 90x90

(L MAX 5820 mm)



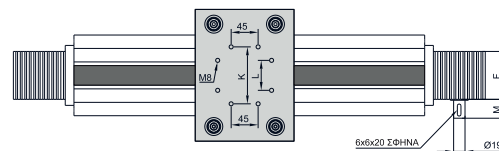
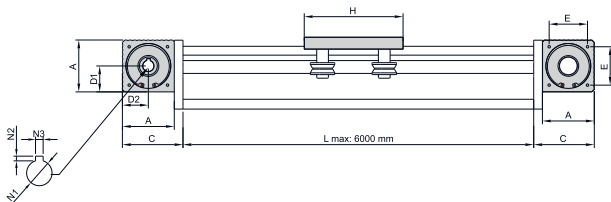
PROTECTIVE GUARD
LUBRICATING PROPERTY

BLOCK (OPEN TYPE)

Loading Capacity

Load	Static	
■ F _x (N)	(N)	915
■ F _y (N)	(N)	1295
■ F _z (N)	(N)	2460
Moment		
■ M _x (Nm)	(Nm)	102
■ M _y (Nm)	(Nm)	172
■ M _z (Nm)	(Nm)	195

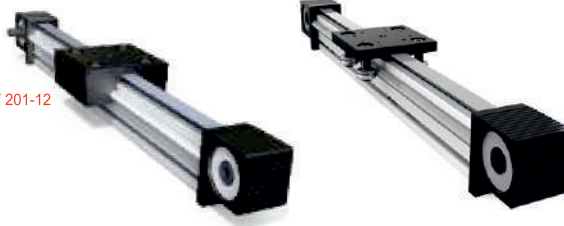
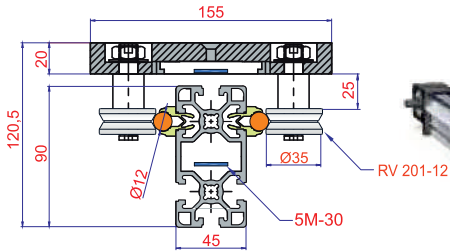
BELT 5M30 MAX SPEED 5m/sn ΚΑΘΑΡΗ ΔΙΑΔΡΟΜΗ	TIMH		EXTRA SPARE PARTS		TIMH
	RV 202				
500 mm			Block(with 4 Ballbearings)	1 τεμάχιο	
1000 mm			Block With 4 Ballbearings (guarded /oiled)	1 τεμάχιο	
2000 mm			G95 Flang + JM 40 Coupling Mounting	1 τεμάχιο	
3000 mm			G95 Flang + JM 55 Coupling Mounting	1 τεμάχιο	
4000 mm					
5000 mm					
5820 mm					



Timing Belt module Roller 45x90
(L MAX 5830 mm)

PROTECTIVE GUARD
LUBRICATING PROPERTY

BLOCK (OPEN TYPE)



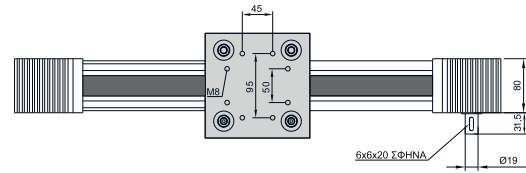
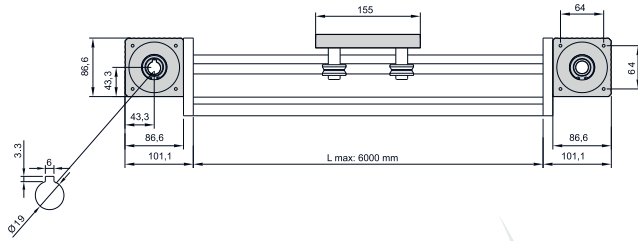
Loading Capacity

Load	Static	
■ F _x	(N)	640
■ F _y	(N)	885
■ F _z	(N)	1150
Moment		
■ M _x	(Nm)	75
■ M _y	(Nm)	70
■ M _z	(Nm)	86

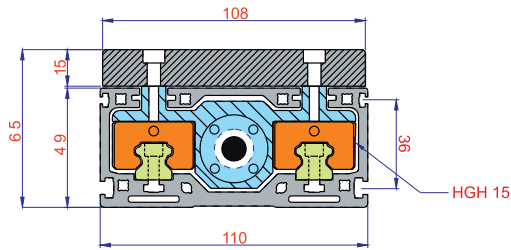
ΚΑΘΑΡΗ ΔΙΑΔΡΟΜΗ	
500 mm	
1000 mm	
2000 mm	
3000 mm	
4000 mm	
5000 mm	
5830 mm	

EXTRA SPARE PARTS		
Block(with 4 Ballbearings)	1 τεμάχιο	
Block With 4 Ballbearings (guarded /oiled)	1 τεμάχιο	
G80 Flange+JM 40 Coupling Mounting	1 τεμάχιο	
G85 Flange+JM 40 Coupling Mounting	1 τεμάχιο	

SIGMA SERIES



Ball screw Bridge Module 50x110
(L MAX 2000 mm)



Loading Capacity

Load	Static (N)	dynamic
■ F _x	(N)	8600
■ F _y	(N)	5400
■ F _z	(N)	9200
Moment	(Nm)	510
■ M _x	(Nm)	1374
■ M _y	(Nm)	1120
■ M _z	(Nm)	2350

COMPACT SERIES

PLATE LENGTH
170

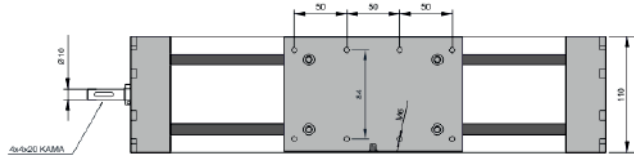
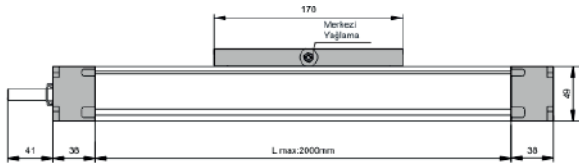
PLATE LENGTH
80

ΚΑΘΑΡΗ ΔΙΑΔΡΟΜΗ	TIMH	TIMH
500 mm	Ball screw (16-05 mm)	Ball screw (16-05 mm)
1000 mm		
2000 mm		

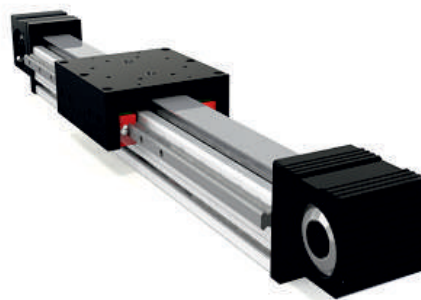
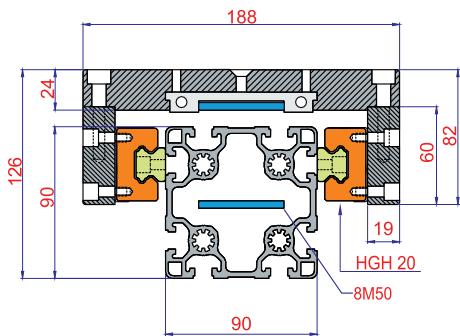
EXTRA SPARE PARTS

G80 Flange + JM 40 Coupling mounting	1 τεμάχιο	
G85 Flange + JM 40 Coupling mounting	1 τεμάχιο	

NOTE: Prices are given according to single block.
There will be added 130 € in list price for double blocked plate.



Linear Timing Belt Module 90x90
(L MAX 5780 mm)



Loading Capacity

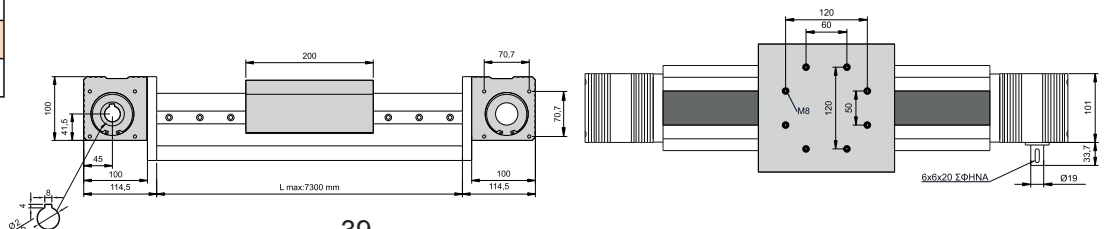
Load	Static (N)	
■ F _x	(N)	950
■ F _y	(N)	2785
■ F _z	(N)	3863
Moment	(Nm)	
■ M _x	(Nm)	690
■ M _y	(Nm)	435
■ M _z	(Nm)	435

LINEAR SERIES

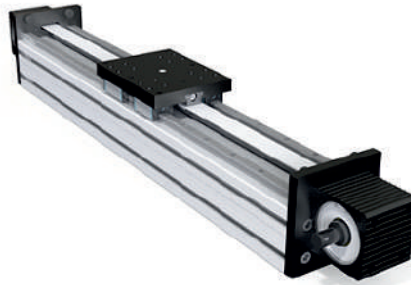
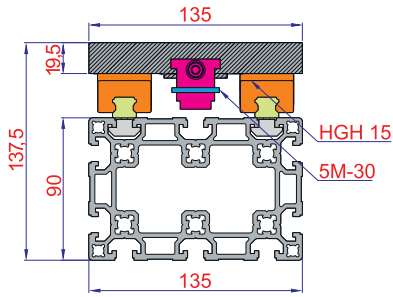
ΚΑΘΑΡΗ ΔΙΑΔΡΟΜΗ	
500 mm	
1000 mm	
2000 mm	
3000 mm	
4000 mm	
5000 mm	
5780 mm	

EXTRA SPARE PARTS

Block (With Linear Block)	1 τεμάχιο	
Pulley Box 100x100 Triger Head	1 σετ	
G95 Flange + JM 40 Coupling mounting	1 τεμάχιο	
G95 Flange + JM 55 Coupling mounting	1 τεμάχιο	



Linear Timing Belt Module 90x135
(L MAX 5780 mm)



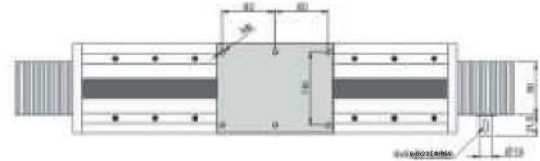
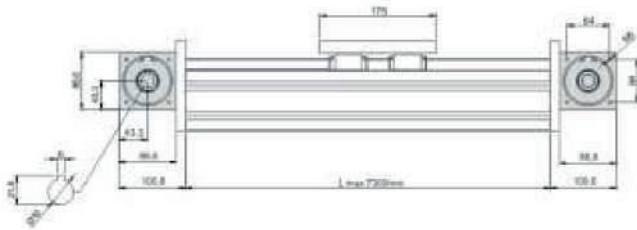
ΚΑΘΑΡΗ ΔΙΑΔΡΟΜΗ	
500 mm	
1000 mm	
2000 mm	
3000 mm	
4000 mm	
5000 mm	
5780 mm	

EXTRA SPARE PARTS		
Block (With Linear Block)	1 σετ	
Pulley Box 100x100 Triger Head	1 τεμάχιο	
G 95 Flange + JM 55 Coupling mounting	1 τεμάχιο	

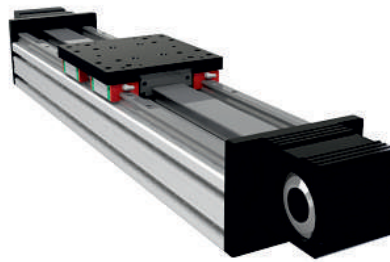
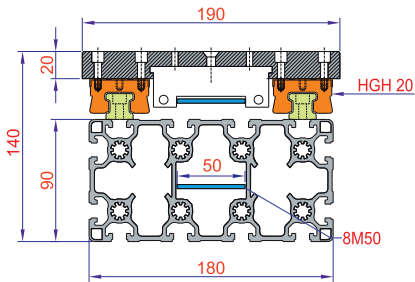
Loading Capacity

Load	Static	
■ F _x	(N)	1350
■ F _y	(N)	3215
■ F _z	(N)	4560

Moment		
■ M _x	(Nm)	690
■ M _y	(Nm)	540
■ M _z	(Nm)	540



Linear Timing Belt Module 90x180
(L MAX 5780 mm)



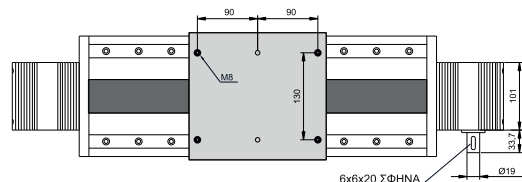
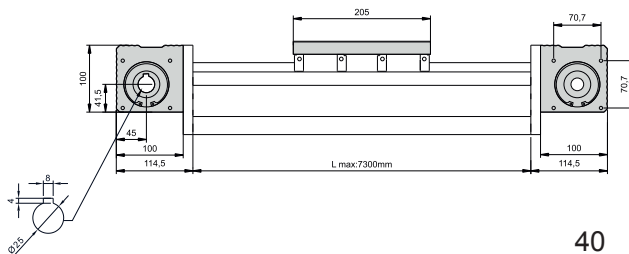
ΚΑΘΑΡΗ ΔΙΑΔΡΟΜΗ	
500 mm	
1000 mm	
2000 mm	
3000 mm	
4000 mm	
5000 mm	
5780 mm	

EXTRA SPARE PARTS		
Block (With Linear Block)	1 σετ	
Pulley Box 100x100 Triger Head	1 τεμάχιο	
G 95 Flange + JM 55 Coupling mounting	1 τεμάχιο	

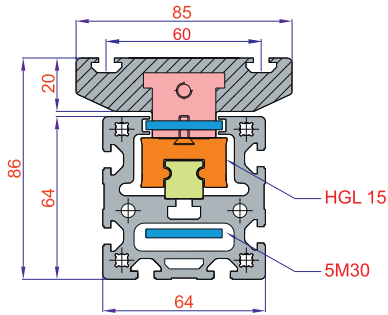
Loading Capacity

Load	Static	
■ F _x	(N)	1650
■ F _y	(N)	4300
■ F _z	(N)	12600

Moment		
■ M _x	(Nm)	1447
■ M _y	(Nm)	1613
■ M _z	(Nm)	1613



Timing Belt Compact Module 64x64
(L MAX 5750 mm)



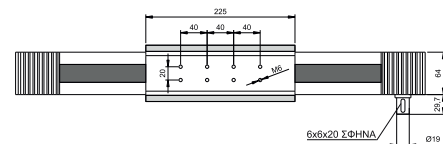
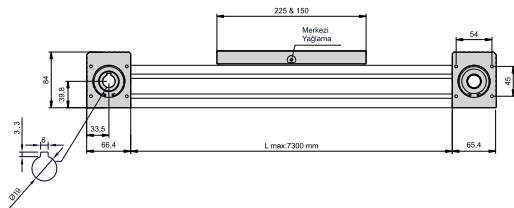
Loading Capacity

Load	Static	
■ F _x (N)	(N)	2200
■ F _y (N)	(N)	2460
■ F _z (N)	(N)	4240
Moment		
■ M _x (Nm)	(Nm)	385
■ M _y (Nm)	(Nm)	415
■ M _z (Nm)	(Nm)	540

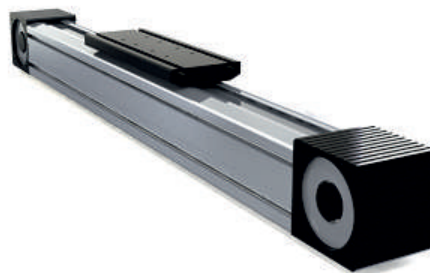
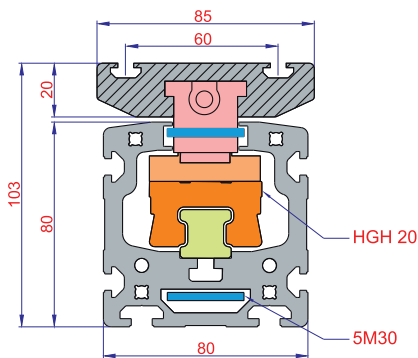
	PLATE LENGTH 150	PLATE LENGTH 225
ΚΑΘΑΡΗ ΔΙΑΔΡΟΜΗ		
500 mm		
1000 mm		
2000 mm		
3000 mm		
4000 mm		
5000 mm		
5750 mm		

EXTRA SPARE PARTS		
Block With Linear	1 τεμάχιο	
Pulley Box 64x64 Triger Head	1 σετ	
G60 Flange + JM 30 Coupling mounting	1 τεμάχιο	
G80 Flange + JM 40 Coupling mounting	1 τεμάχιο	

NOTE:Prices are given according to single block.
There will be added 68 € in list price for double blocked plate.



Timing Belt Compact Module 80x80
(L MAX 5750 mm)



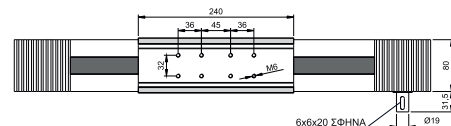
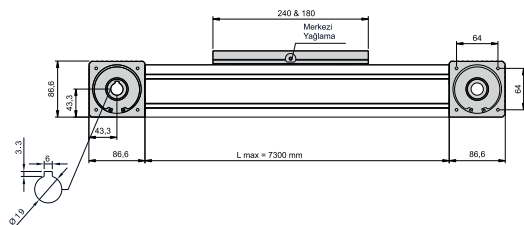
Loading Capacity

Load	Static	
■ F _x (N)	(N)	2400
■ F _y (N)	(N)	2760
■ F _z (N)	(N)	7260
Moment		
■ M _x (Nm)	(Nm)	412
■ M _y (Nm)	(Nm)	465
■ M _z (Nm)	(Nm)	580

	PLATE LENGTH 180	PLATE LENGTH 240
ΚΑΘΑΡΗ ΔΙΑΔΡΟΜΗ		
500 mm		
1000 mm		
2000 mm		
3000 mm		
4000 mm		
5000 mm		
5750 mm		

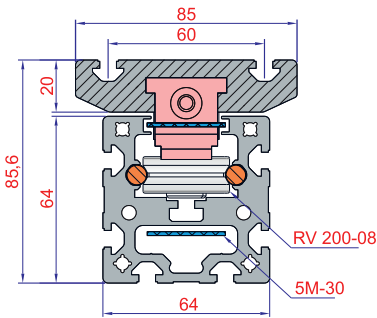
EXTRA SPARE PARTS		
Block With Linear	1 τεμάχιο	
Pulley Box 80x80	1 σετ	
G85 Flange + GS19 Coupling mounting	1 τεμάχιο	
G95 Flange + GS19 Coupling mounting	1 τεμάχιο	

NOTE:Prices are given according to single block.
There will be added 68 € in list price for double blocked plate.



Timing Belt Compact Roller 64x64

(L MAX 5750 mm)



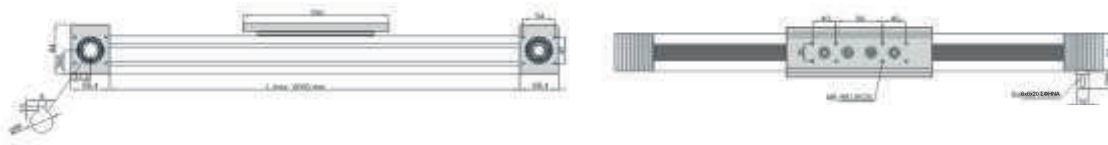
**ROLLER
RV 200-08**

ΚΑΘΑΡΗ ΔΙΑΔΡΟΜΗ	
500 mm	
1000 mm	
2000 mm	
3000 mm	
4000 mm	
5000 mm	
5750 mm	

EXTRA SPARE PARTS		
Block With Linear	1 τεμάχιο	
Pulley Box 64x64 Triger Head	1 σετ	
G60 Flange + JM 30 Coupling mounting	1 τεμάχιο	
G80 Flange + JM 40 Coupling mounting	1 τεμάχιο	

Loading Capacity

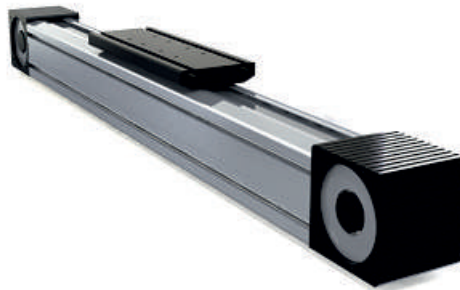
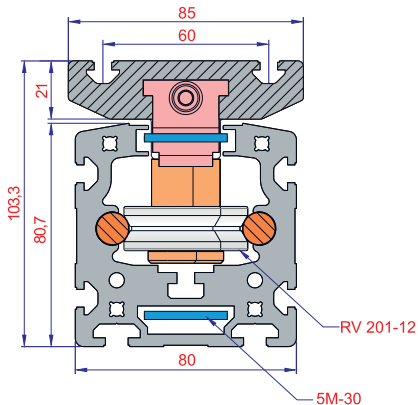
Load	Static	
■ F _x (N)	(N)	1400
■ F _y (N)	(N)	1150
■ F _z (N)	(N)	1260
Moment		
■ M _x (Nm)	(Nm)	430
■ M _y (Nm)	(Nm)	510
■ M _z (Nm)	(Nm)	470



COMPACT SERIES

Timing Belt Compact Roller 80x80

(L MAX 5750 mm)



**ROLLER
RV 201-12**

ΚΑΘΑΡΗ ΔΙΑΔΡΟΜΗ	
500 mm	
1000 mm	
2000 mm	
3000 mm	
4000 mm	
5000 mm	
5750 mm	

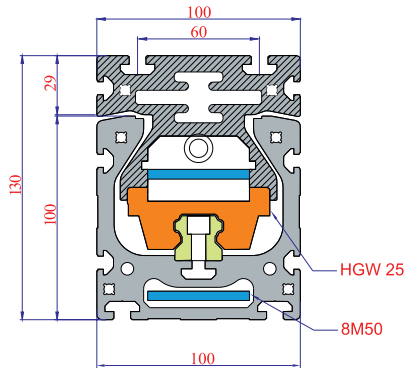
EXTRA SPARE PARTS		
Block With Linear	1 τεμάχιο	
Pulley Box 80x80 Triger Head	1 σετ	
G85 Flange + JM 40 Coupling mounting	1 τεμάχιο	
G95 Flange + JM 40 Coupling mounting	1 τεμάχιο	

Loading Capacity

Load	Dynamic	
■ F _x (N)	(N)	1650
■ F _y (N)	(N)	1320
■ F _z (N)	(N)	1440
Moment		
■ M _x (Nm)	(Nm)	650
■ M _y (Nm)	(Nm)	720
■ M _z (Nm)	(Nm)	680



Timing Belt Compact Module 100x100
(L MAX 7500 mm)



ΚΑΘΑΡΗ ΔΙΑΔΡΟΜΗ	
500 MM	
1000 MM	
2000 MM	
3000 MM	
4000 MM	
5000 MM	
6000 MM	
7000 MM	
7500 MM	

EXTRA SPARE PARTS		
Block With Linear	1 τεμάχιο	
Pulley Box 100x100 Triger Head	1 σετ	
G95 Flange + JM 40 Coupling mounting	1 τεμάχιο	
G120 Flange + JM 55 Coupling mounting	1 τεμάχιο	

NOTE:Prices are given according to single block.
There will be added 70 € in list price for double blocked plate.

Loading Capacity

Load	Dynamic
■ F _x (N)	3600
■ F _y (N)	3180
■ F _z (N)	10870
Moment	
■ M _x (Nm)	697
■ M _y (Nm)	780
■ M _z (Nm)	710

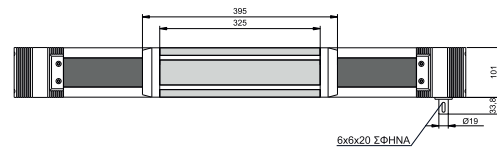
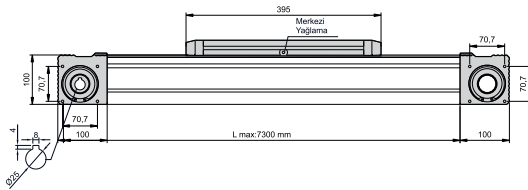
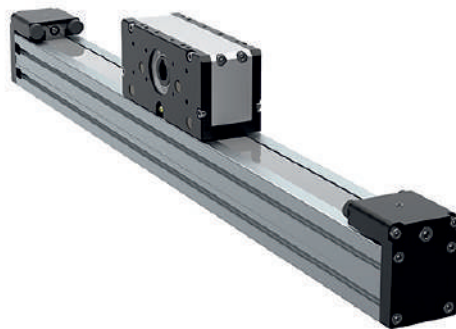


Plate Driven Timing Belt Compact Module 64x64
(L MAX 5700 mm)



ΚΑΘΑΡΗ ΔΙΑΔΡΟΜΗ	180	230
	500 mm	
1000 mm		
2000 mm		
3000 mm		
4000 mm		
5000 mm		
5700 mm		

EXTRA SPARE PARTS		
Block With Linear	1 τεμάχιο	
Pulley Box 64x64 Triger Head	1 σετ	
G60 Flange + JM 30 Coupling mounting	1 τεμάχιο	
G80 Flange + JM 40 Coupling mounting	1 τεμάχιο	

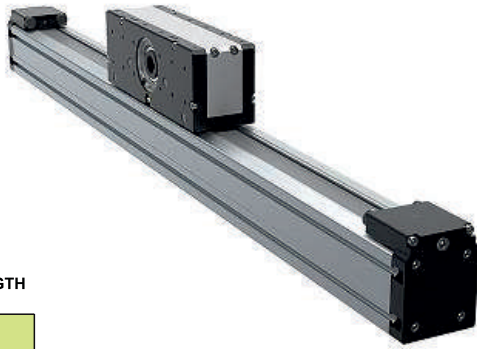
Loading Capacity

Load	Dynamic
■ F _x (N)	2200
■ F _y (N)	2460
■ F _z (N)	2000
Moment	
■ M _x (Nm)	385
■ M _y (Nm)	300
■ M _z (Nm)	540

COMPACT SERIES

COMPACT SERIES

Plate Driven Timing Belt Compact Module 80x80
(L MAX 5700 mm)

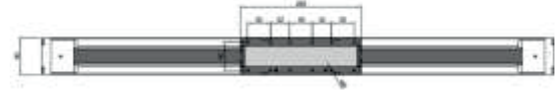
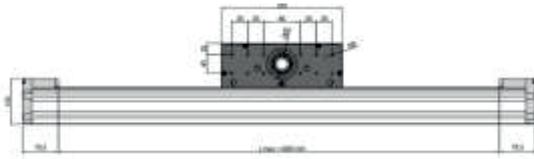


ΚΑΘΑΡΗ ΔΙΑΔΡΟΜΗ	PLATE LENGTH 215	PLATE LENGTH 265
500 mm		
1000 mm		
2000 mm		
3000 mm		
4000 mm		
5000 mm		
5700 mm		

EXTRA SPARE PARTS		
Block With Linear	1 τεμάχιο	
Pulley Box 80x80 Triger Head	1 σετ	
G85 Flange + JM 30 Coupling mounting	1 τεμάχιο	
G95 Flange + JM 40 Coupling mounting	1 τεμάχιο	

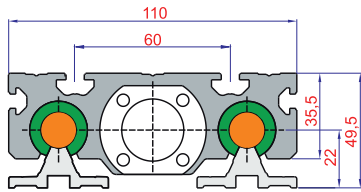
Loading Capacity

Load	Dynamic
F_x (N)	2400
F_y (N)	2760
F_z (N)	7220
Moment	
M_x (Nm)	415
M_y (Nm)	480
M_z (Nm)	570



DKVM SERIES

DKVM Ballscrew Module Ø12
(L MAX 2000 mm)



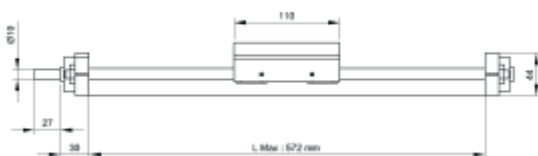
ΚΑΘΑΡΗ ΔΙΑΔΡΟΜΗ	BallScrew Ø12-05
500 mm	
1000 mm	
2000 mm	

EXTRA SPARE PARTS		
Plate (12 UUOP Bearing)	1 τεμάχιο	

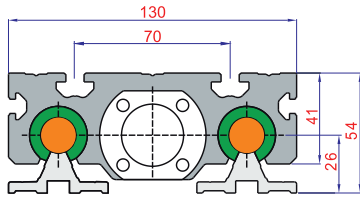
* Prices are given according to block with linear bearing.

Loading Capacity

Load	DKVM
F_x (N)	360
F_y (N)	850
F_z (N)	1215
Moment	
M_x (Nm)	100
M_y (Nm)	80
M_z (Nm)	110



DKVM Ballscrew Module Ø16
(L MAX 2000 mm)



Loading Capacity

Load	DKVM	
■ F _x (N)	16	505
■ F _y (N)		1205
■ F _z (N)		1400
Moment		
■ M _x (Nm)		167
■ M _y (Nm)		126
■ M _z (Nm)		146

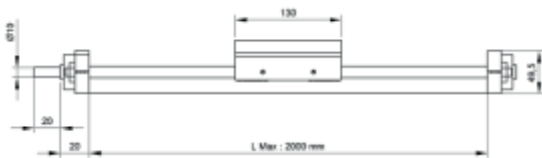
ΚΑΘΑΡΗ ΔΙΑΔΡΟΜΗ
500 mm
1000 mm
2000 mm

	Ballscrew (16-05 mm)	Trapezoidal (16-04 mm)	Ballscrew (16-16 mm)
500 mm			
1000 mm			
2000 mm			

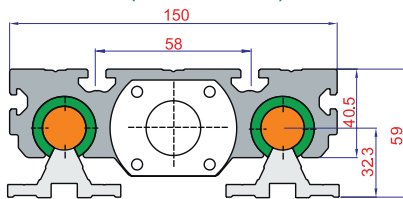
EXTRA SPARE PARTS	
Plate (16 UUOP Bearing)	1 τεμάχιο

* Prices are given according to block with linear bearing

DKVM SERIES



DKVM Ballscrew Module Ø20
(L MAX 3000 mm)



Loading Capacity

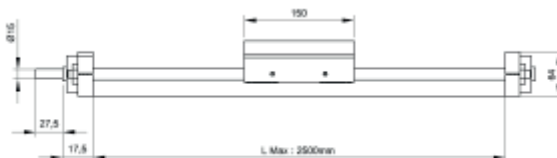
Load	DKVM	
■ F _x (N)	20	618
■ F _y (N)		1744
■ F _z (N)		2180
Moment		
■ M _x (Nm)		228
■ M _y (Nm)		195
■ M _z (Nm)		204

ΚΑΘΑΡΗ ΔΙΑΔΡΟΜΗ
500 mm
1000 mm
2000 mm
3000 mm

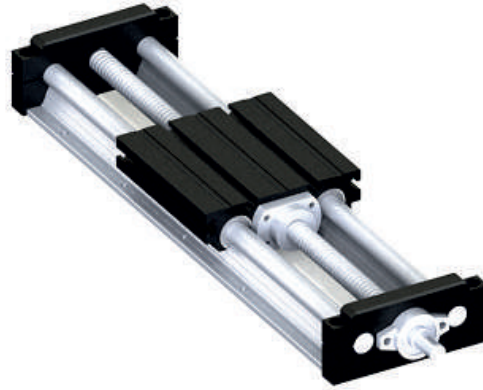
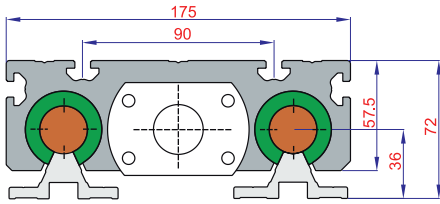
	Ballscrew (20-05 mm)	Trapezoidal (20-04 mm)	Ballscrew (20-20 mm)
500 mm			
1000 mm			
2000 mm			
3000 mm			

EXTRA SPARE PARTS	
Plate (20 UUOP Bearing)	1 τεμάχιο

* Prices are given according to block with linear bearing.



DKVM Ballscrew Module Ø25
(L MAX 3700 mm)



Loading Capacity

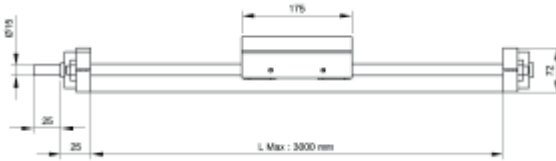
Load	DKVM	
■ F _x (N)	25	713
■ F _y (N)		2323
■ F _z (N)		2904
Moment		
■ M _x (Nm)		360
■ M _y (Nm)		234
■ M _z (Nm)		224

ΚΑΘΑΡΗ ΔΙΑΔΡΟΜΗ	Ballscrew (25-05 mm)	Ballscrew (25-10 mm)	Ballscrew (25-25 mm)
500 mm			
1000 mm			
2000 mm			
3000 mm			
3700 mm			

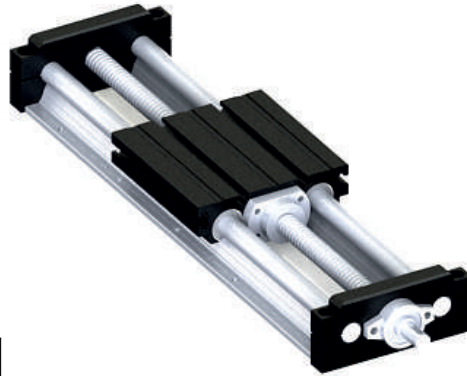
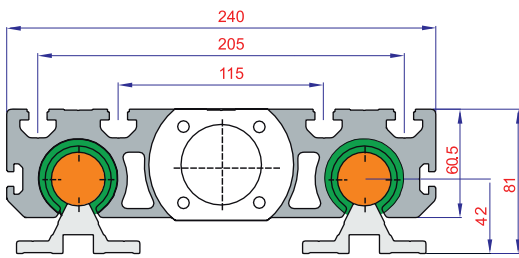
EXTRA SPARE PARTS		
Plate (25 UUOP Bearing)	1 τεμάχιο	
G95 Flange + JM 40 Coupling mounting	1 τεμάχιο	

* Prices are given according to block with linear bearing .

DKVM SERIES



DKVM Ballscrew Module Ø30
(L MAX 3630 mm)



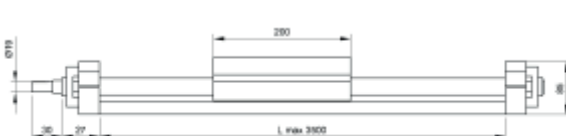
Loading Capacity

Load	DKVM	
■ F _x (N)	30	912
■ F _y (N)		2950
■ F _z (N)		3450
Moment		
■ M _x (Nm)		410
■ M _y (Nm)		290
■ M _z (Nm)		280

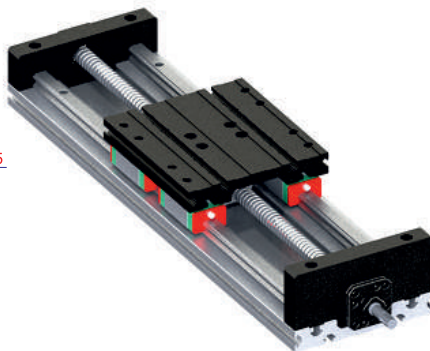
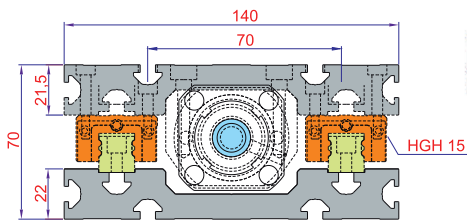
ΚΑΘΑΡΗ ΔΙΑΔΡΟΜΗ	Ballscrew (32-05 mm)	Ballscrew (32-10 mm)
500 mm		
1000 mm		
2000 mm		
3000 mm		
3630 mm		

EXTRA SPARE PARTS		
Plate (30 UUOP Bearing)	1 τεμάχιο	
G95 Flange + JM 55 Coupling mounting	1 τεμάχιο	

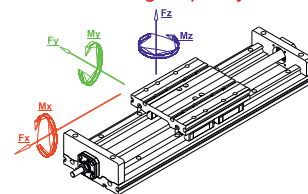
* Prices are given according to block with linear bearing.



DKZM Ballscrew Z Axis Module 15
(L MAX 1000 mm)



Loading Capacity



Load	Static	DKZM 15	
		2 TROLLEY	4 TROLLEY
■ F _x (N)		1045	2020
■ F _y (N)		1080	2080
■ F _z (N)		1520	3020
Moment			
■ M _x (Nm)		410	410
■ M _y (Nm)		290	290
■ M _z (Nm)		290	440

PLATE LENGHT 150

PLATE LENGHT 150

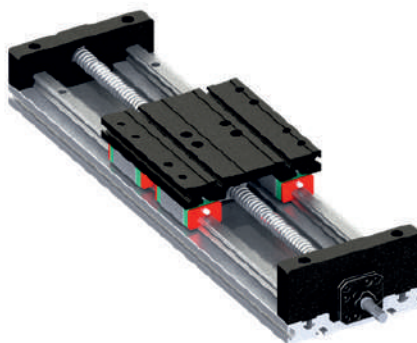
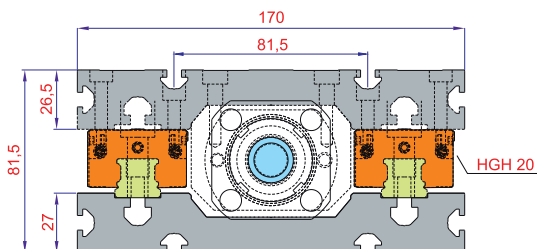
ΚΑΘΑΡΗ ΔΙΑΔΡΟΜΗ	Ballscrew (16-05 mm)	Ballscrew (16-16 mm)
200 mm		
400 mm		
600 mm		
800 mm		
1000 mm		

EXTRA SPARE PARTS

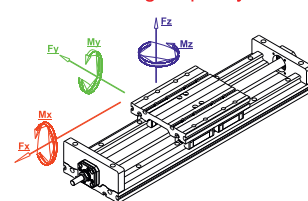
Block With 4 Linear	1 τεμάχιο	
G60 Flange + JM 30 Coupling mounting	1 τεμάχιο	
G80 Flange + JM 40 Coupling mounting	1 τεμάχιο	

NOT: Prices are given according to module with 4 Linear block. There will be decrease 80 € on list price for double block
* Διατίθεται και με 120 mm Plate Length
** Διατίθεται και με THK τα Linear Rail

DKZM Ballscrew Z Axis Module 20
(L MAX 1000 mm)



Loading Capacity



Load	Static	DKZM 20	
		2 TROLLEY	4 TROLLEY
■ F _x (N)		2235	3680
■ F _y (N)		1925	4400
■ F _z (N)		2580	5760
Moment			
■ M _x (Nm)		650	650
■ M _y (Nm)		440	290
■ M _z (Nm)		440	290

PLATE LENGHT 200

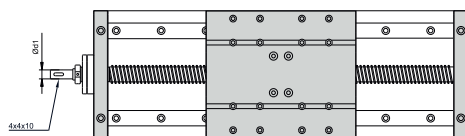
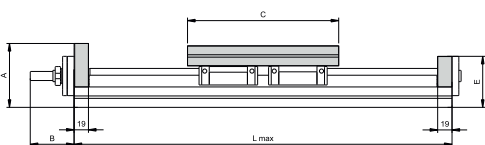
PLATE LENGHT 200

ΚΑΘΑΡΗ ΔΙΑΔΡΟΜΗ	Ballscrew (20-05 mm)	Ballscrew (20-20 mm)
200 mm		
400 mm		
600 mm		
800 mm		
1000 mm		

EXTRA SPARE PARTS

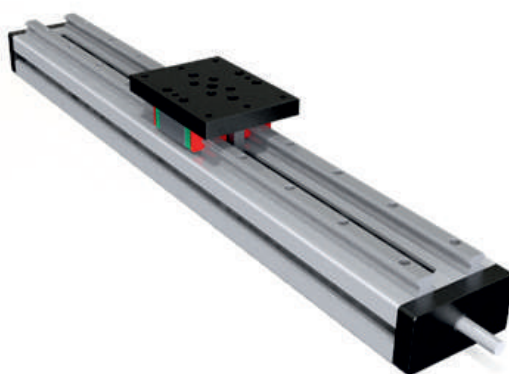
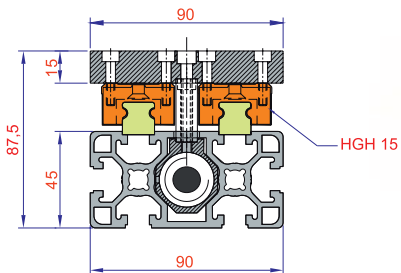
Block With 4 Linear	1 τεμάχιο	
G85 Flange + JM 40 Coupling mounting	1 τεμάχιο	
G95 Flange + JM 40 Coupling mounting	1 τεμάχιο	

NOT: Prices are given according to module with 4 Linear block. There will be decrease 100 € on list price for double block
* Διατίθεται και με 150 mm Plate Length
** Διατίθεται και με THK τα Linear Rail



PRODUCT NAME	BALLSCREW	A	B	C	ØD	Ød1	E	F	G	H	K	K1	L max
DKZM 15	16 - 05	77,5	49	150	16	12	57,5	22	21,5	70	140	70	2000
DKZM 20	20 - 05	84,5	58	200	20	12	67,5	27	26,5	81,5	170	85	2500
DKZM 15	16 - 16	77,5	49	150	16	12	57,5	22	21,5	70	140	70	2000
DKZM 20	20 - 20	84,5	58	200	20	12	67,5	27	26,5	81,5	170	85	2500

Ballscrew Spot Module 45x90
(L MAX 1000 mm)

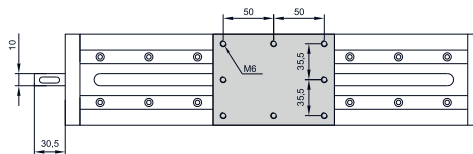
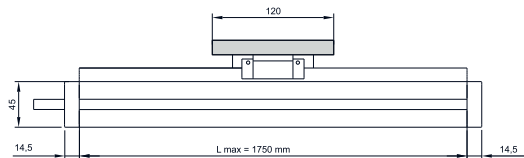


Loading Capacity

Load	Static	45x90
■ F _x	(N)	725
■ F _y	(N)	878
■ F _z	(N)	1157
Moment		
■ M _x	(Nm)	110
■ M _y	(Nm)	70
■ M _z	(Nm)	75

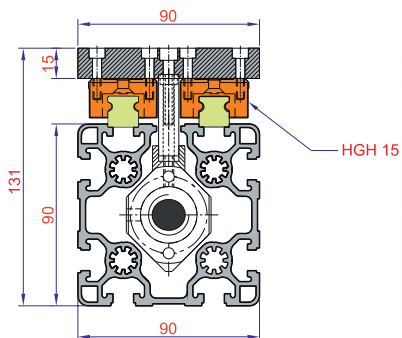
ΚΑΘΑΡΗ ΔΙΑΔΡΟΜΗ	Ball screw (12-05 mm)
200 mm	
400 mm	
600 mm	
800 mm	
1000 mm	

EXTRA SPARE PARTS		
Block With Linear	1 τεμάχιο	
G60 Flange + JM 30 Coupling mounting	1 τεμάχιο	
G80 Flange + JM 40 Coupling mounting	1 τεμάχιο	



SPOT SERIES

Ballscrew Spot Module 90x90
(L MAX 1200 mm)

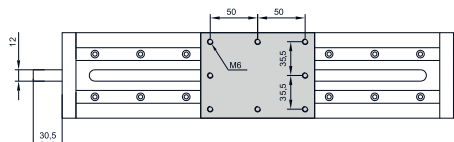
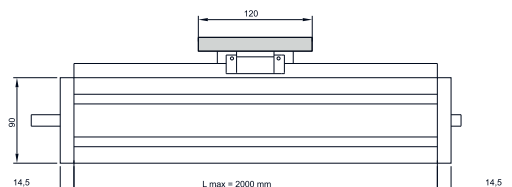


Loading Capacity

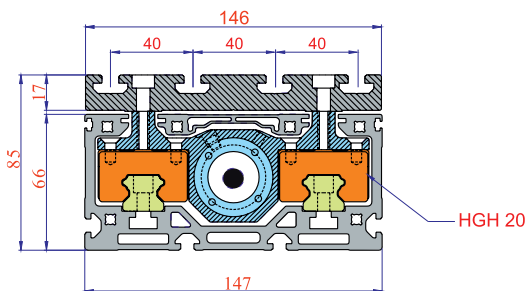
Load	Static	90x90
■ F _x	(N)	975
■ F _y	(N)	878
■ F _z	(N)	1157
Moment		
■ M _x	(Nm)	140
■ M _y	(Nm)	80
■ M _z	(Nm)	95

ΚΑΘΑΡΗ ΔΙΑΔΡΟΜΗ	Ball screw (16-05 mm)
200 mm	
400 mm	
600 mm	
800 mm	
1000 mm	
1200 mm	

EXTRA SPARE PARTS		
Block With Linear	1 τεμάχιο	
G80 Flange + GS19 Coupling mounting	1 τεμάχιο	



Ballscrew Bridge Module 65x145
(L MAX 3750 mm)



Loading Capacity

Load	Static (N)	Dynamic (N)
■ F _x	(N)	9800
■ F _y	(N)	6200
■ F _z	(N)	13500

Moment	(Nm)
■ M _x	620
■ M _y	1340
■ M _z	1340

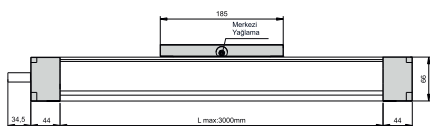
COMPACT SERIES

	PLATE LENGTH 185	PLATE LENGTH 185
ΚΑΘΑΡΗ ΔΙΑΔΡΟΜΗ	Ball screw (25-05 mm)	Ball screw (20-20 mm)
500 mm		
1000 mm		
2000 mm		
3000 mm		
3750 mm		

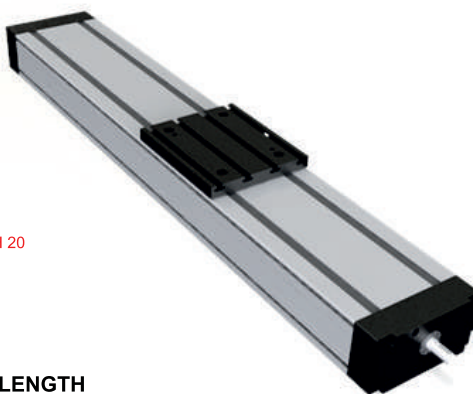
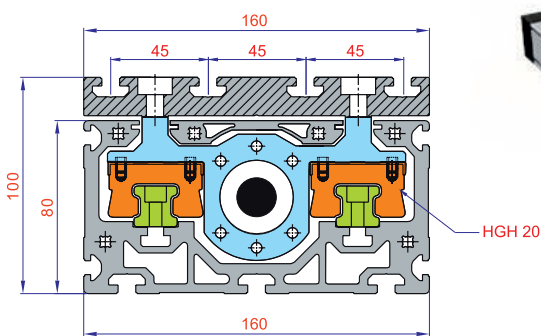
EXTRA SPARE PARTS	
G95 Flange + JM 40 Coupling mounting	1 τεμάχιο
G95 Flange + JM 55 Coupling mounting	1 τεμάχιο

NOTE: Prices are given according to single block. There will be added 130 € in list price for double blocked plate.

ΔΙΑΤΙΘΕΤΑΙ ΚΑΙ ΜΕ PLATE LENGTH 85 mm



Linear Compact Module 80x160
(L MAX 3800 mm)



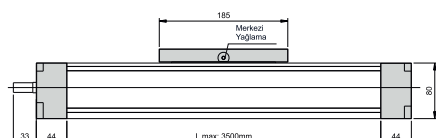
Loading Capacity

Load	Static (N)	Dynamic (N)
■ F _x	(N)	12300
■ F _y	(N)	9600
■ F _z	(N)	10870

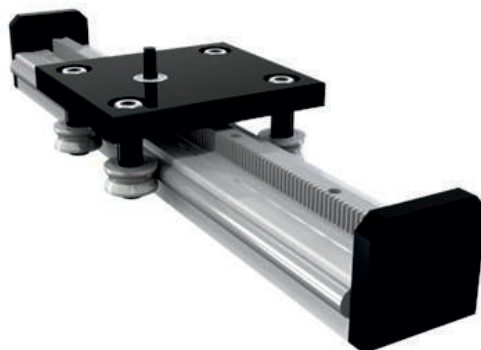
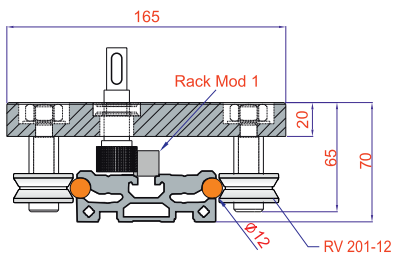
Moment	(Nm)
■ M _x	840
■ M _y	1870
■ M _z	320

	PLATE LENGTH 185	PLATE LENGTH 185
ΚΑΘΑΡΗ ΔΙΑΔΡΟΜΗ	Ball screw (25-10 mm)	Ball screw (20-20 mm)
500 mm		
1000 mm		
2000 mm		
3000 mm		
3800 mm		

EXTRA SPARE PARTS	
G95 Flange + JM 40 Coupling mounting	1 τεμάχιο
G120 Flange + JM 40 Coupling mounting	1 τεμάχιο



Rack and Pinion Block Module Ø12
(L MAX 5850 mm)



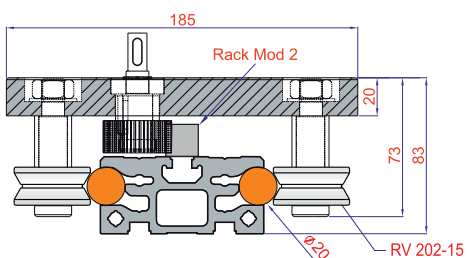
Loading Capacity

Load	Static	
■ F _x	(N)	Ø12
■ F _y	(N)	870
■ F _z	(N)	1100
Moment		
■ M _x	(Nm)	70
■ M _y	(Nm)	65
■ M _z	(Nm)	75

ΚΑΘΑΡΗ ΔΙΑΔΡΟΜΗ	
1000 mm	
2000 mm	
3000 mm	
4000 mm	
5000 mm	
5850 mm	

EXTRA SPARE PARTS		
Block (4 Bearing) RV 201-12	1 τεμάχιο	
G80 Flange + JM 40 Coupling mounting	1 τεμάχιο	

Rack and Pinion Block Module Ø20
(L MAX 5830 mm)

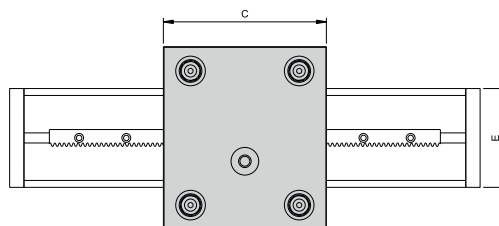
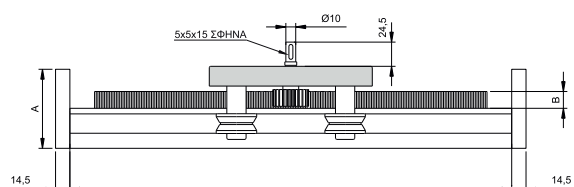


Loading Capacity

Load	Static	
■ F _x	(N)	Ø20
■ F _y	(N)	1260
■ F _z	(N)	1870
Moment		
■ M _x	(Nm)	95
■ M _y	(Nm)	85
■ M _z	(Nm)	115

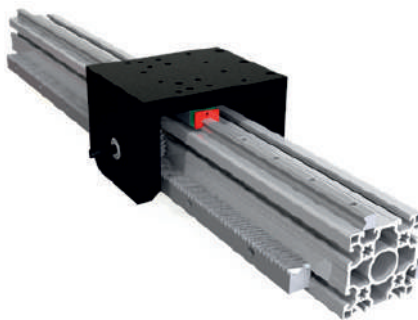
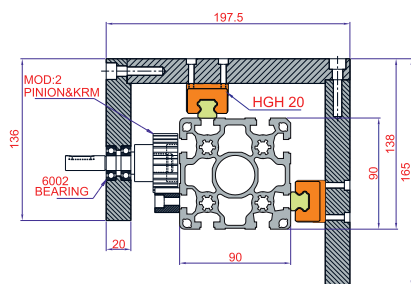
ΚΑΘΑΡΗ ΔΙΑΔΡΟΜΗ	
1000 mm	
2000 mm	
3000 mm	
4000 mm	
5000 mm	
5830 mm	

EXTRA SPARE PARTS		
Block (4 Bearing) RV 202-15	1 ετεμάχιο	
G80 Flange + ξμ 40 Coupling mounting	1 τεμάχιο	



PRODUCT NAME	A	B	C	ØD	E	F	G	H	K	L	ROLLER
Ø12 RACK & PINION MODULE	70	15X15 - MOD1	145	12	90	165	70,5	40,5	82	22,6	RV 201-12
Ø20 RACK & PINION MODULE	80	17X17 - MOD1,5	165	20	100	185	83	30	86	28	RV 202-15

Rack and Pinion Bridge Module 90x90
(L MAX 5830 mm)

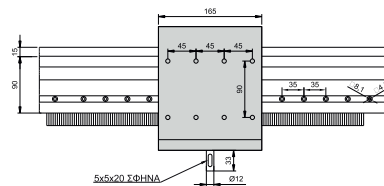
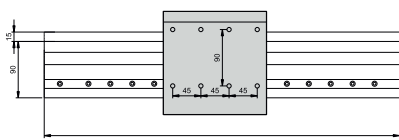


Loading Capacity

Load	Dynamic
■ F _x (N)	1480
■ F _y (N)	2125
■ F _z (N)	2125
Moment	
■ M _x (Nm)	230
■ M _y (Nm)	1613
■ M _z (Nm)	1613

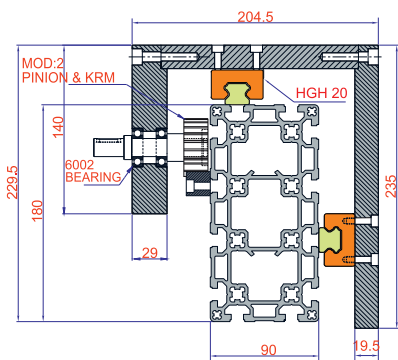
ΚΑΘΑΡΗ ΔΙΑΔΡΟΜΗ	
1000 mm	
2000 mm	
3000 mm	
4000 mm	
5000 mm	
5830 mm	

EXTRA SPARE PARTS		
Block With Linear	1 τεμάχιο	
G95 Flange + JM 40 Coupling mounting	1 τεμάχιο	
G95 Flange + JM 55 Coupling mounting	1 τεμάχιο	



RACK & PINION SERIES

Rack and Pinion Bridge Module 90x180
(L MAX 5780 mm)

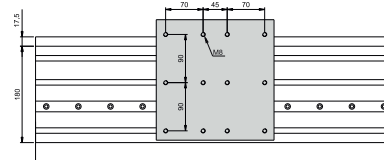
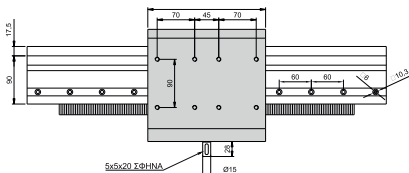


Loading Capacity

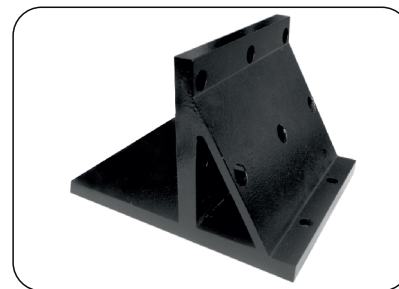
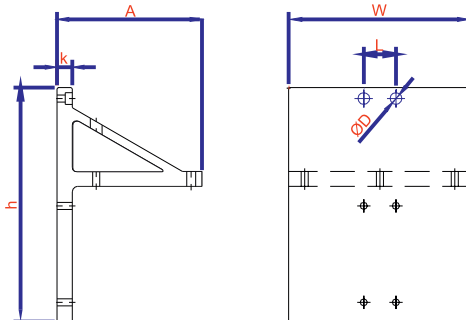
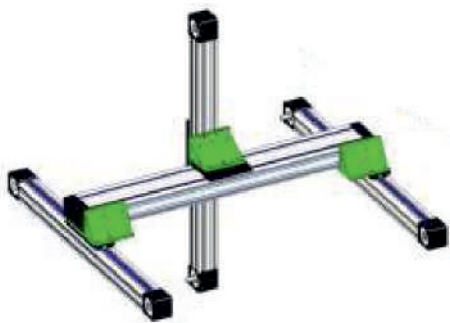
Load	Dynamic
■ F _x (N)	1650
■ F _y (N)	2450
■ F _z (N)	3850
Moment	
■ M _x (Nm)	390
■ M _y (Nm)	1613
■ M _z (Nm)	2470

ΚΑΘΑΡΗ ΔΙΑΔΡΟΜΗ	
1000 mm	
2000 mm	
3000 mm	
4000 mm	
5000 mm	
5780 mm	

EXTRA SPARE PARTS		
Block With Linear	1 τεμάχιο	
G95 Flange + JM 55 Coupling mounting	1 τεμάχιο	
G120 Flange + JM 40 Coupling mounting	1 τεμάχιο	

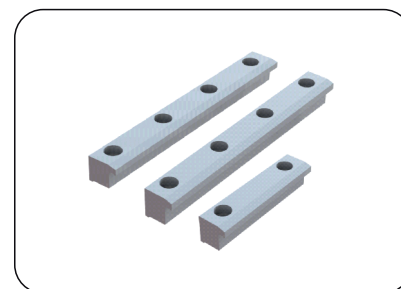
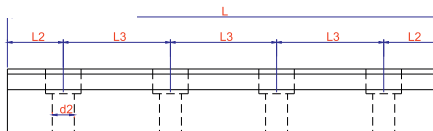
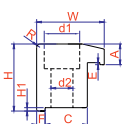
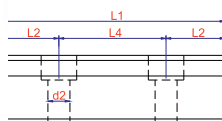
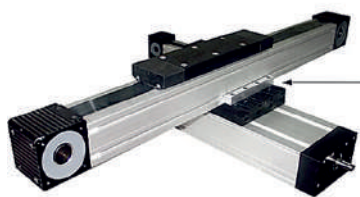


X-Y, Y-Z Axis Adapter



ΚΩΔΙΚΟΣ	TYPE	Point of Contact	h	ØD	k	W	A	L	
AA 64	X-Y, Y-Z Axis Adapter	80x80 - 64x64 Compact	218	8,5	14	170	110	30	
AA 80	X-Y, Y-Z Axis Adapter	80x80 - 80x160 Compact	218	8,5	14	200	110	60	
AA 100	X-Y, Y-Z Axis Adapter	100x100 - 100x100 Bridge Compact	218	8,5	14	200	140	75	
AA 160	X-Y, Y-Z Axis Adapter	80x160 - 80x80 Compact 3- Axis	218	6,5	14	170	140	60	

Module Connection Adapter



ΚΩΔΙΚΟΣ	TYPE	H	H1	d2	d1	E	A	R	W	C	L	L1	L2	L3	L4	F	
MCA 80	80 x 80 - 64 x 64 Module Connection Adapter	19,8	1	6,5	10,5	0,5	6	0,5	20	12,5	160	-	12,5	45	60	2,5	
MCA 100	100 x 100 Module Connection Adapter	30,3	1	6,5	10,5	0,5	6	0,5	20	12,5	-	85	12,5	-	60	2,5	
MCA 45	45 x 45 Module Connection Adapter	22,9	1	6,5	10,5	-	5,5	0,5	20	12,5	-	85	12,5	-	60	2,5	
MCA 160	80 x 160 Module Connection Adapter	14,3	1	6,5	10,5	0,5	6	0,5	20	12,5	160	-	12,5	45	60	2,5	
MCA 145	65 x 145 Module Connection Adapter	14,5	1	6,5	10,5	0,5	6	0,5	20	12,5	145	-	12,5	40	-	2,5	
MCA 110	50 x 110 Module Connection Adapter	10,5	1	6,5	10,5	0,5	6	0,5	20	12,5	-	60	10	-	40	2,5	

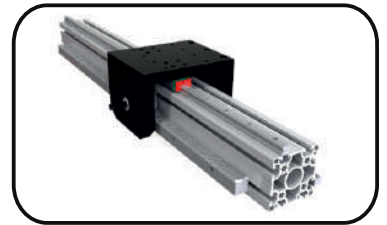
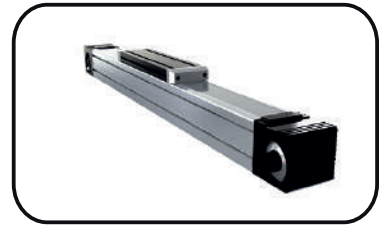
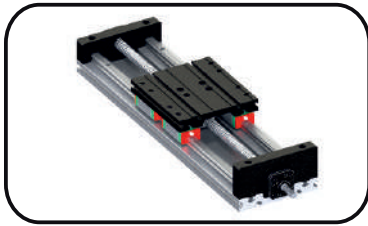
- Στις παραπάνω τιμές δεν περιλαμβάνεται ο Φ.Π.Α.
- Τρόπος πληρωμής μετρητοίς
- Τα μεταφορικά επιβαρύνουν τον πελάτη
- Ο παρών τιμοκατάλογος καταργεί τον προηγούμενο
- Στα προφίλ και στα γραμμικά συστήματα δεν γίνονται επιστροφές
- Στα εξαρτήματα οι επιστροφές θα γίνονται κατόπιν συνεννόησης
- Χρόνος παράδοσης κατόπιν συνεννόησης
- Η εταιρία δεν φέρει καμία ευθύνη για τυχόν φθορές από την μεταφορά

ΑΡΙΘΜΟΣ ΛΟΓΑΡΙΑΣΜΟΥ ΤΡΑΠΕΖΑ ΠΕΙΡΑΙΩΣ - ΑΦΟΙ ΜΕΪΜΑΡΙΔΗ Ο.Ε.:

Αρ. λογ.: 5242 0035 75529

IBAN: GR 22017 22420 00524 20035 75529





 **aluminium**
Profile



**ΚΑΤΑΛΟΓΟΣ
2025**

ΑΦΟΙ ΜΕΪΜΑΡΙΔΗ Ο.Ε.



Σταδίου 97
Βέροια



23310 23342
23310 23178



www.aluminium-profile.gr
www.meimaridis.gr



sales@aluminium-profile.gr
info@aluminium-profile.gr
info@meimaridis.gr